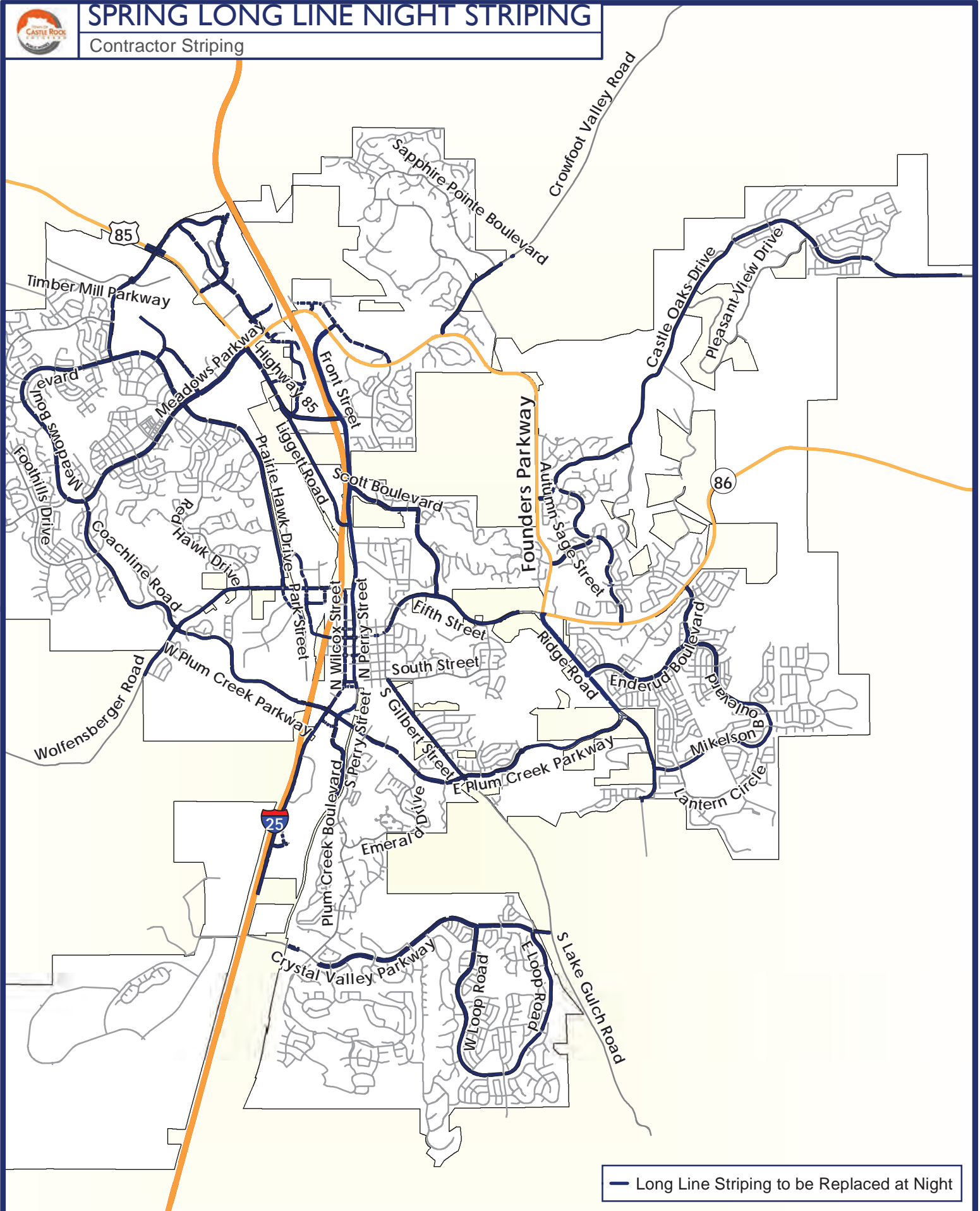




# SPRING LONG LINE NIGHT STRIPING

Contractor Striping



— Long Line Striping to be Replaced at Night



Disclaimer: The data presented has been compiled from various sources, each of which introduces varying degrees of inaccuracies or inconsistencies. Such discrepancies in data are inherent and in supplying this product to the public the Town of Castle Rock assumes no liability for its use or accuracy. For questions or comments regarding omissions, corrections, or updates please visit [CRgov.com/directory](http://CRgov.com/directory) for contact information.  
 Copyright 2024, Town of Castle Rock  
 Document Path: J:\GIS\GIS Projects - Transportation\2024\_Striping\_Quantities\2024\_1\_23\_NightWork\_LongLines\_Bx11P.mxd



Map Disclaimer: If you are unable to access any portion of this map due to a disability as defined under Colorado House Bill 21-1110, we are here to help! Please call us at 303-663-4440, email the Town's accessibility team at [accessibility@cr.gov](mailto:accessibility@cr.gov) or submit an accommodation request form at [cr.gov/A11YRequest](http://cr.gov/A11YRequest). The data presented has been compiled from various sources, each of which introduces varying degrees of inaccuracies or inconsistencies. Such discrepancies in data are inherent and in supplying this product to the public the Town of Castle Rock assumes no liability for its use or accuracy. For questions or comments regarding omissions, corrections, or updates please visit [CR.gov.com/directory](http://CR.gov.com/directory) for contact information. Copyright 2025, Town of Castle Rock. Date Modified: 1/30/2025.





## 2025 NIGHT WORK ACTIVITIES MAP

### Crowfoot Valley Road Widening Project

 Night Work Activities

 300ft Project Buffer

 Town Boundary

 Major Streets

 Minor Streets

 Impacted Residences (111)



**Map Disclaimer:** If you are unable to access any portion of this map due to a disability as defined under Colorado House Bill 21-1110, we are here to help! Please call us at 303-663-4440, email the Town's accessibility team at [accessibility@crgov.com](mailto:accessibility@crgov.com) or submit an accommodation request form at [crgov.com/A11YRequest](http://crgov.com/A11YRequest). The data presented has been compiled from various sources, each of which introduces varying degrees of inaccuracies or inconsistencies. Such discrepancies in data are inherent and in supplying this product to the public the Town of Castle Rock assumes no liability for its use or accuracy. For questions or comments regarding omissions, corrections, or updates please visit [crgov.com/directory](http://crgov.com/directory) for contact information.

Copyright © 2025, Town of Castle Rock. Date Modified: 1/30/2025.



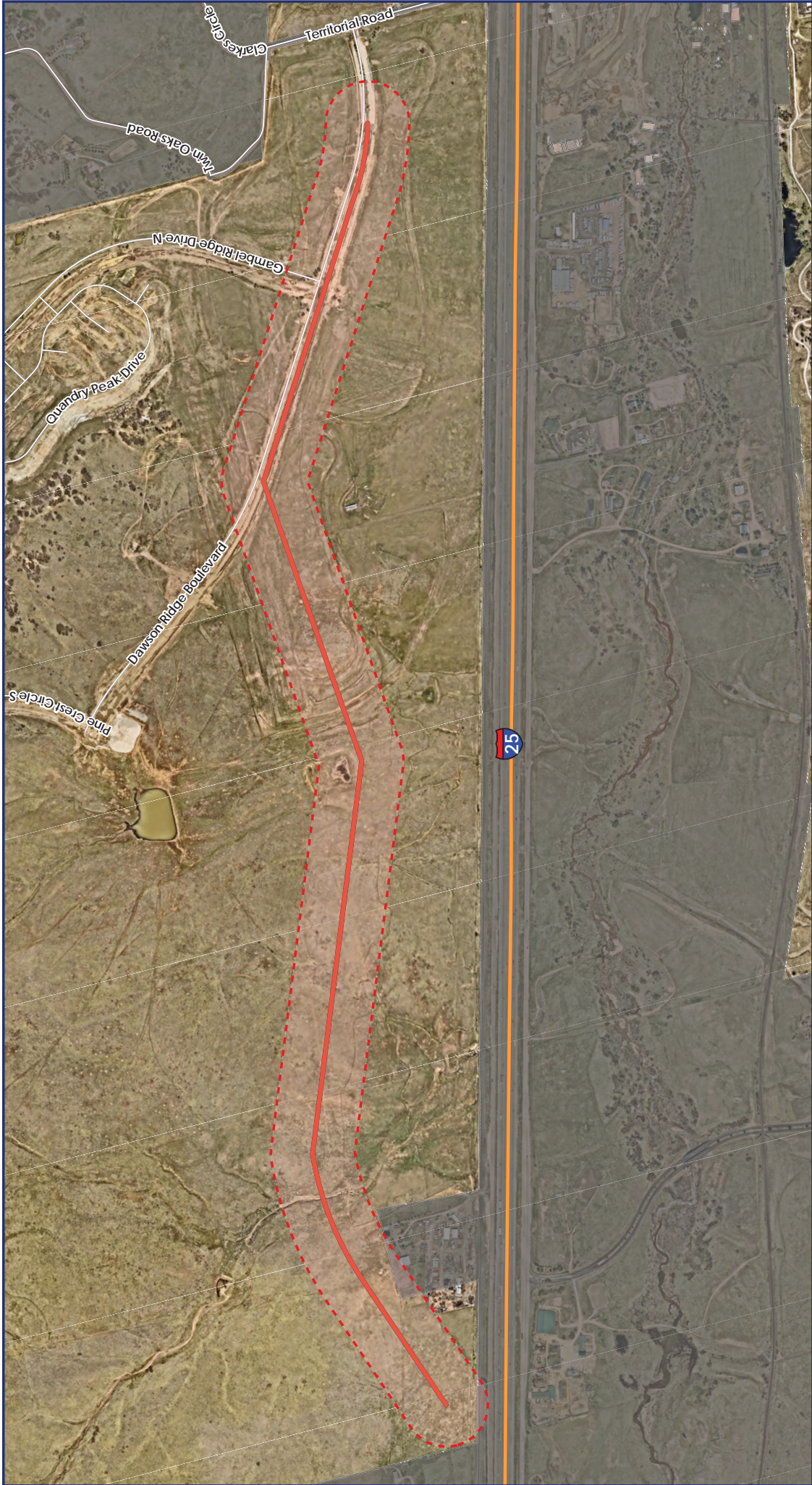


## 2025 NIGHT WORK ACTIVITIES MAP

### Crystal Valley Interchange Project - Package 2

-  Night Work Activities  
300ft Project Buffer
-  Town Boundary
-  Impacted Residences  
(0)
-  Interstate
-  Major Streets
-  Minor Streets

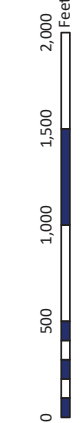


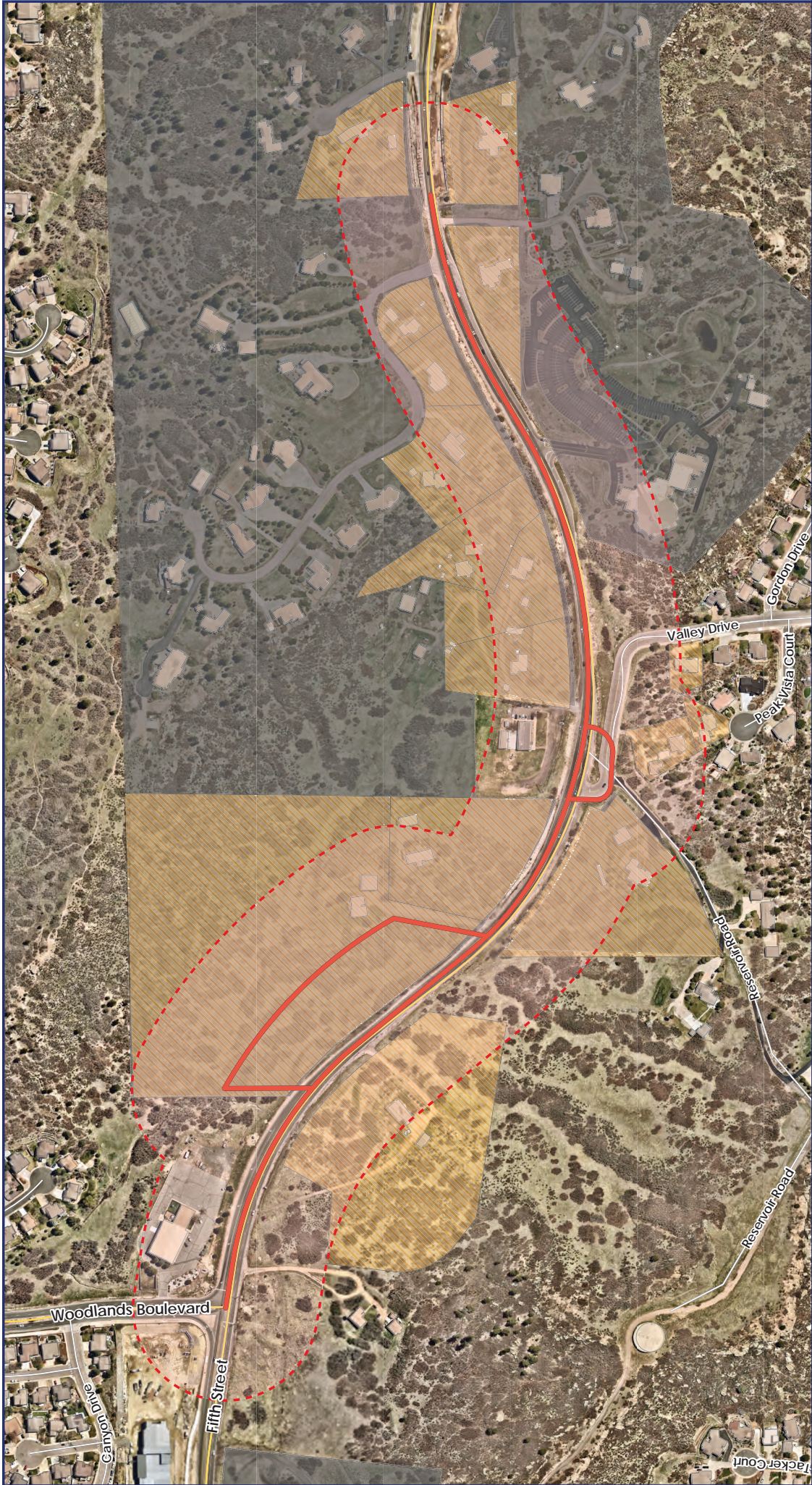
# 2025 NIGHT WORK ACTIVITIES MAP

## Dawson Trails Boulevard Project


- Night Work Activities
- 300ft Project Buffer
- Town Boundary
- Interstate
- Minor Streets
- Impacted Residences (0)

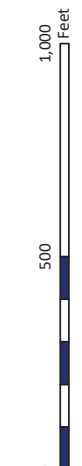


Map Disclaimer: If you are unable to access any portion of this map due to a disability as defined under Colorado House Bill 21-1110, we are here to help! Please call us at 303-663-4440, email the Town's accessibility team at [accessibility@CRgov.com](mailto:accessibility@CRgov.com) or submit an accommodation request form at [CRgov.com/A11YRequest](http://CRgov.com/A11YRequest). The data presented has been compiled from various sources, each of which introduces varying degrees of inaccuracies or inconsistencies. Such discrepancies in data are inherent and in supplying this product to the public the Town of Castle Rock assumes no liability for its use or accuracy. For questions or comments regarding omissions, corrections, or updates please visit [CRgov.com/directory](http://CRgov.com/directory) for contact information. Copyright 2025, Town of Castle Rock. Date Modified: 1/30/2025.




Map Disclaimer: if you are unable to access any portion of this map due to a disability as defined under Colorado House Bill 21-1110, we are here to help! Please call us at 303-663-4440, email the Town's accessibility team at [accessibility@cr.gov](mailto:accessibility@cr.gov) or submit an accommodation request form at [cr.gov/AILRequest](http://cr.gov/AILRequest). The data presented has been compiled from various sources, each of which introduces varying degrees of inaccuracies or inconsistencies. Such discrepancies in data are inherent and in supplying this product to the public the Town of Castle Rock assumes no liability for its use or accuracy. For questions or comments regarding omissions, corrections, or updates please visit [cr.gov/directory](http://cr.gov/directory) for contact information. Copyright 2025, Town of Castle Rock. Date Modified: 1/30/2025.



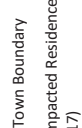


## 2025 NIGHT WORK ACTIVITIES MAP


### Fifth Street Improvements Project




Night Work Activities  
300ft Project Buffer



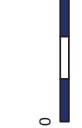
Town Boundary



Impacted Residences  
(17)

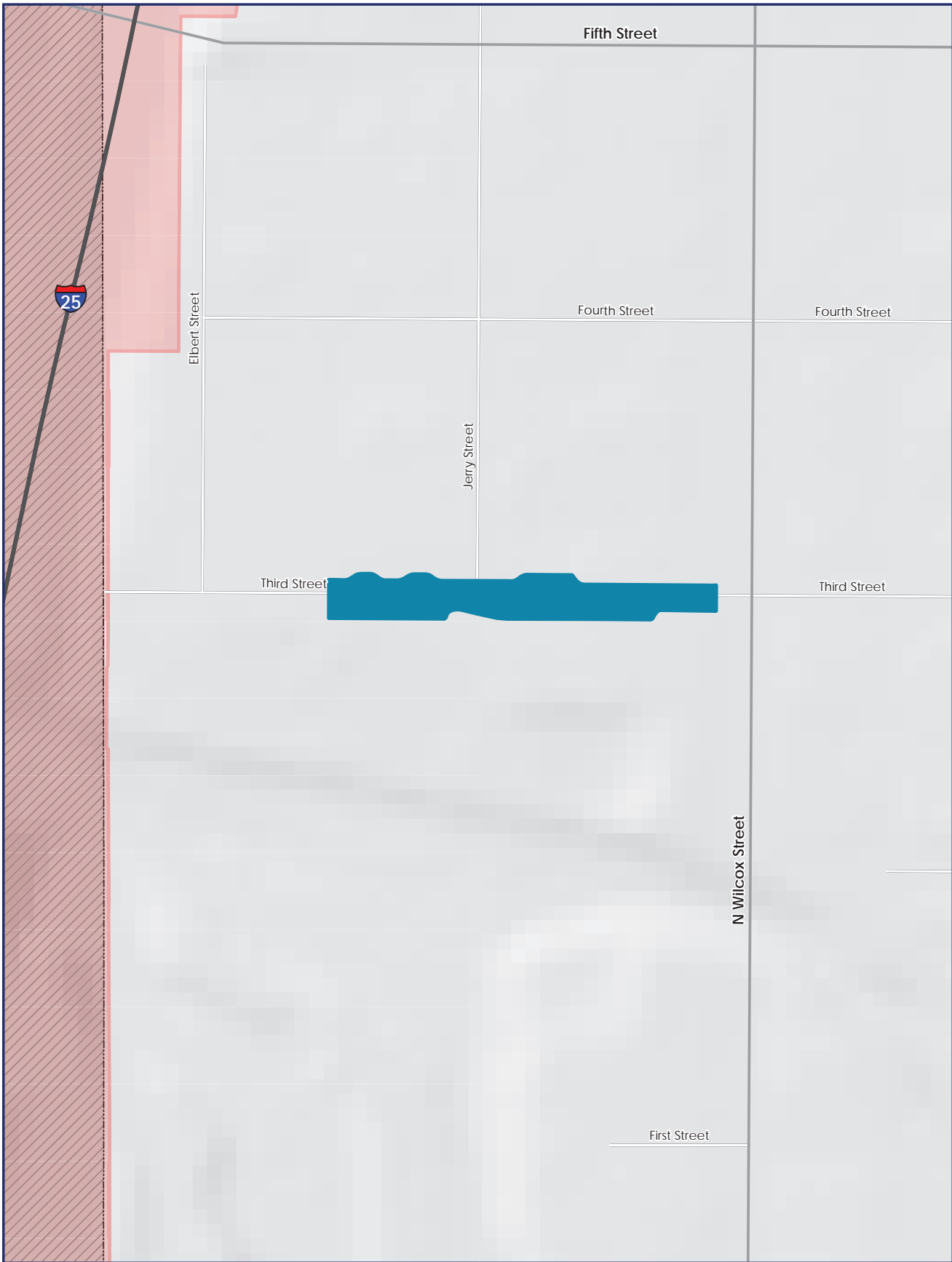


Major Streets



Minor Streets

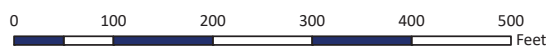




## 2025 MILL AND OVERLAY - ADDED SCOPE OF WORK

Third Street

- Pavement Treatment**
- 2in Mill and Overlay (2,989 Square Yards)
- PMP Central Region
- Town Limits


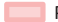
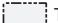


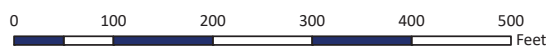
Map Disclaimer: If you are unable to access any portion of this map due to a disability as defined under Colorado House Bill 21-1110, we are here to help! Please call us at 303-663-4440, email the Town's accessibility team at [accessibility@CRgov.com](mailto:accessibility@CRgov.com) or submit an accommodation request form at [CRgov.com/A11yRequest](https://www.castlerockco.gov/A11yRequest). The data presented has been compiled from various sources, each of which introduces varying degrees of inaccuracies or inconsistencies. Such discrepancies in data are inherent and in supplying this product to the public the Town of Castle Rock assumes no liability for its use or accuracy. For questions or comments regarding omissions, corrections, or updates please visit [CRgov.com/directory](https://www.castlerockco.gov/directory) for contact information. Copyright 2025, Town of Castle Rock. Date Modified: 2/10/2025.



## 2025 MILL AND OVERLAY - ADDED SCOPE OF WORK

South Street, Fair Street, and Briscoe Street

- Pavement Treatment**
-  2in Mill and Overlay (2,331 Square Yards)
  -  PMP Central Region
  -  Town Limits



Map Disclaimer: If you are unable to access any portion of this map due to a disability as defined under Colorado House Bill 21-1110, we are here to help! Please call us at 303-663-4440, email the Town's accessibility team at [accessibility@CRgov.com](mailto:accessibility@CRgov.com) or submit an accommodation request form at [CRgov.com/A11yRequest](https://CRgov.com/A11yRequest). The data presented has been compiled from various sources, each of which introduces varying degrees of inaccuracies or inconsistencies. Such discrepancies in data are inherent and in supplying this product to the public the Town of Castle Rock assumes no liability for its use or accuracy. For questions or comments regarding omissions, corrections, or updates please visit [CRgov.com/directory](https://CRgov.com/directory) for contact information. Copyright 2025, Town of Castle Rock. Date Modified: 2/10/2025.



## 2025 MILL AND OVERLAY - ADDED SCOPE OF WORK

Miller Court

- Pavement Treatment**
- 2in Mill and Overlay (1,588 Square Yards)
  - PMP Central Region
  - Town Limits



Map Disclaimer: If you are unable to access any portion of this map due to a disability as defined under Colorado House Bill 21-1110, we are here to help! Please call us at 303-663-4440, email the Town's accessibility team at [accessibility@CRgov.com](mailto:accessibility@CRgov.com) or submit an accommodation request form at [CRgov.com/A11yRequest](http://CRgov.com/A11yRequest). The data presented has been compiled from various sources, each of which introduces varying degrees of inaccuracies or inconsistencies. Such discrepancies in data are inherent and in supplying this product to the public the Town of Castle Rock assumes no liability for its use or accuracy. For questions or comments regarding omissions, corrections, or updates please visit [CRgov.com/directory](http://CRgov.com/directory) for contact information. Copyright 2025, Town of Castle Rock. Date Modified: 2/10/2025.