



ARTHOUSE DESIGN

2373 CENTRAL PARK BLVD. STE 204
DENVER, CO 80238 | 303.892.9816

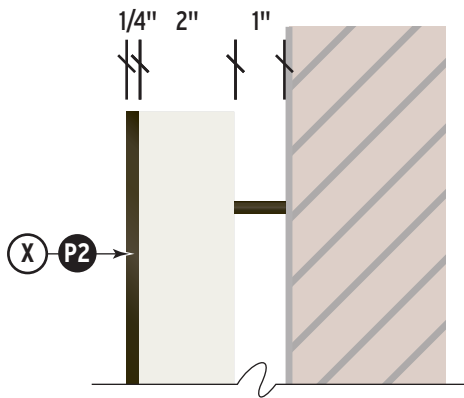
ENCORE

EXTERIOR PROJECT SIGNAGE

SEPTEMBER 9, 2019



4 Sign Type X.A: Primary Project ID Sign Wall Sign - Night View
- Scale: 3/16" = 1' - 0"



5 Sign Type X.A: Primary Project ID Sign Wall Sign -Detail Side View
- Scale: 3/4" = 1' - 0"



2 Sign Type X.A: Primary Project ID Sign Wall Sign
- Scale: 3/8" = 1' - 0"

3 Sign Type X.A: Primary Project ID Sign Wall Sign - Side View
- Scale: 3/8" = 1' - 0"



1 Main Entrance - Partial Elevation
- Scale: 3/16" = 1' - 0"

EXTERIOR SIGNAGE

CONFLUENCE // ENCORE

GENERAL NOTES

ALL SITE MEASUREMENTS ARE APPROXIMATE. FABRICATOR TO FIELD VERIFY TO DETERMINE EXACT DIMENSIONS & CONDITIONS.

- 1 2" thick white acrylic letter-forms with 1/4" thick aluminum faces/returns painted to match color as noted. All electrical components and mounting hardware to be concealed. Letters are pin mounted 1" from brick facade.

KEY PLAN

ALL SITE LOCATIONS ARE APPROXIMATE.



Package Issue Date

Sheet Revision Date

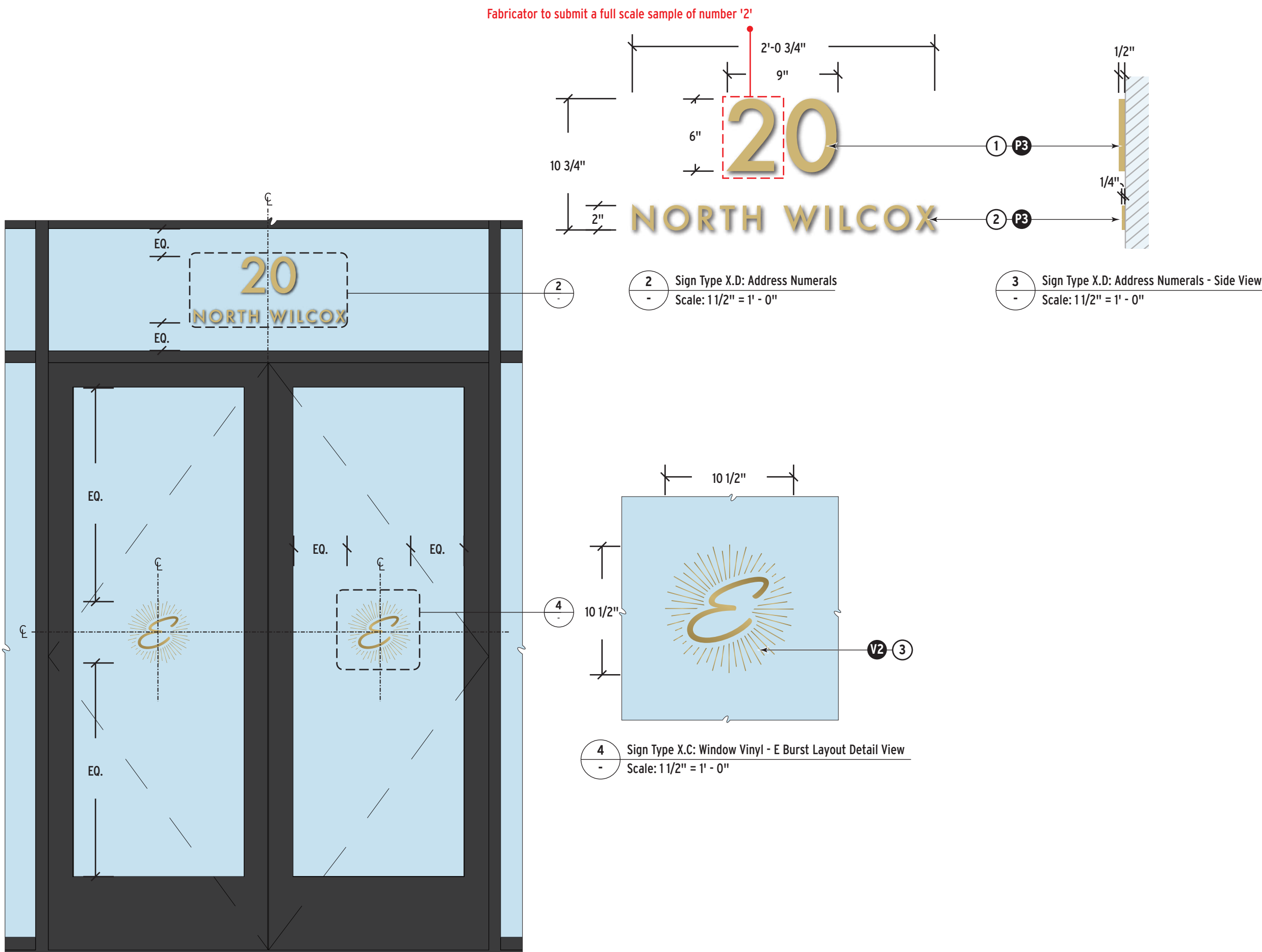


ARTHOUSE DESIGN

2373 CENTRAL PARK BLVD. STE 204
DENVER, CO 80238 | 303.892.9816
ARTHOUSEDENVER.COM

©2019 Arthouse Design
All drawings and written material appearing herein constitute original and unpublished work of the designer and may not be duplicated, used or disclosed without written consent of designer.





EXTERIOR SIGNAGE

CONFLUENCE // ENCORE

GENERAL NOTES

ALL SITE MEASUREMENTS ARE APPROXIMATE. FABRICATOR TO FIELD VERIFY TO DETERMINE EXACT DIMENSIONS & CONDITIONS.

- 1/2" thick FCO letters painted to match color as noted and mounted flush to glass with suitable adhesive as required.
- 1/4" thick FCO letters painted to match color as noted and mounted flush to glass with suitable adhesive as required.
- Exterior grade, cut to shape, self-adhesive vinyl, applied to second surface of window to match material as noted.

KEY PLAN

ALL SITE LOCATIONS ARE APPROXIMATE.



Package Issue Date

Sheet Revision Date



ARTHOUSE DESIGN

2373 CENTRAL PARK BLVD. STE 204
DENVER, CO 80238 | 303.892.9816
ARTHOUSEDENVER.COM

©2019 Arthouse Design
All drawings and written material appearing herein constitute original and unpublished work of the designer and may not be duplicated, used or disclosed without written consent of designer.

X.C

X.D

EXTERIOR SIGNAGE

CONFLUENCE // ENCORE

GENERAL NOTES

ALL SITE MEASUREMENTS ARE APPROXIMATE. FABRICATOR TO FIELD VERIFY TO DETERMINE EXACT DIMENSIONS & CONDITIONS.

- 1
- Exterior grade, cut to shape, self-adhesive vinyl, applied to second surface of window to match material as noted.

KEY PLAN

ALL SITE LOCATIONS ARE APPROXIMATE.



Package Issue Date

Sheet Revision Date

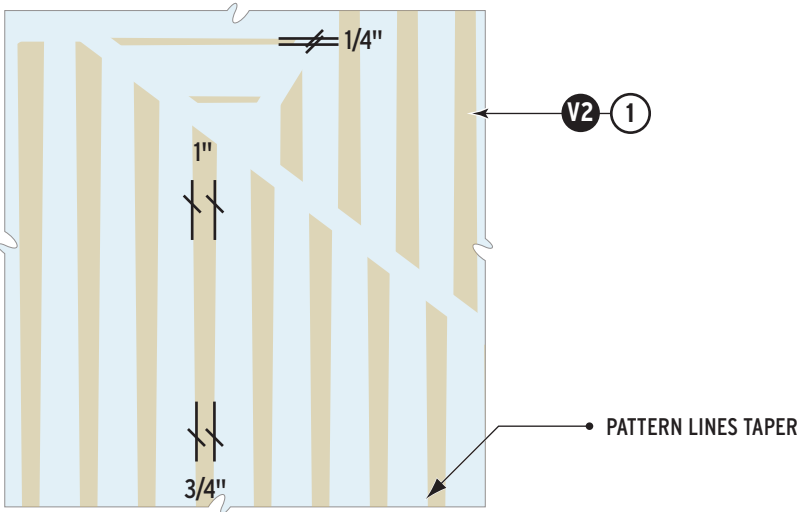


ARTHOUSE DESIGN

2373 CENTRAL PARK BLVD. STE 204
DENVER, CO 80238 | 303.892.9816
ARTHOUSEDENVER.COM

©2019 Arthouse Design
All drawings and written material appearing herein constitute original and unpublished work of the designer and may not be duplicated, used or disclosed without written consent of designer.

X.C

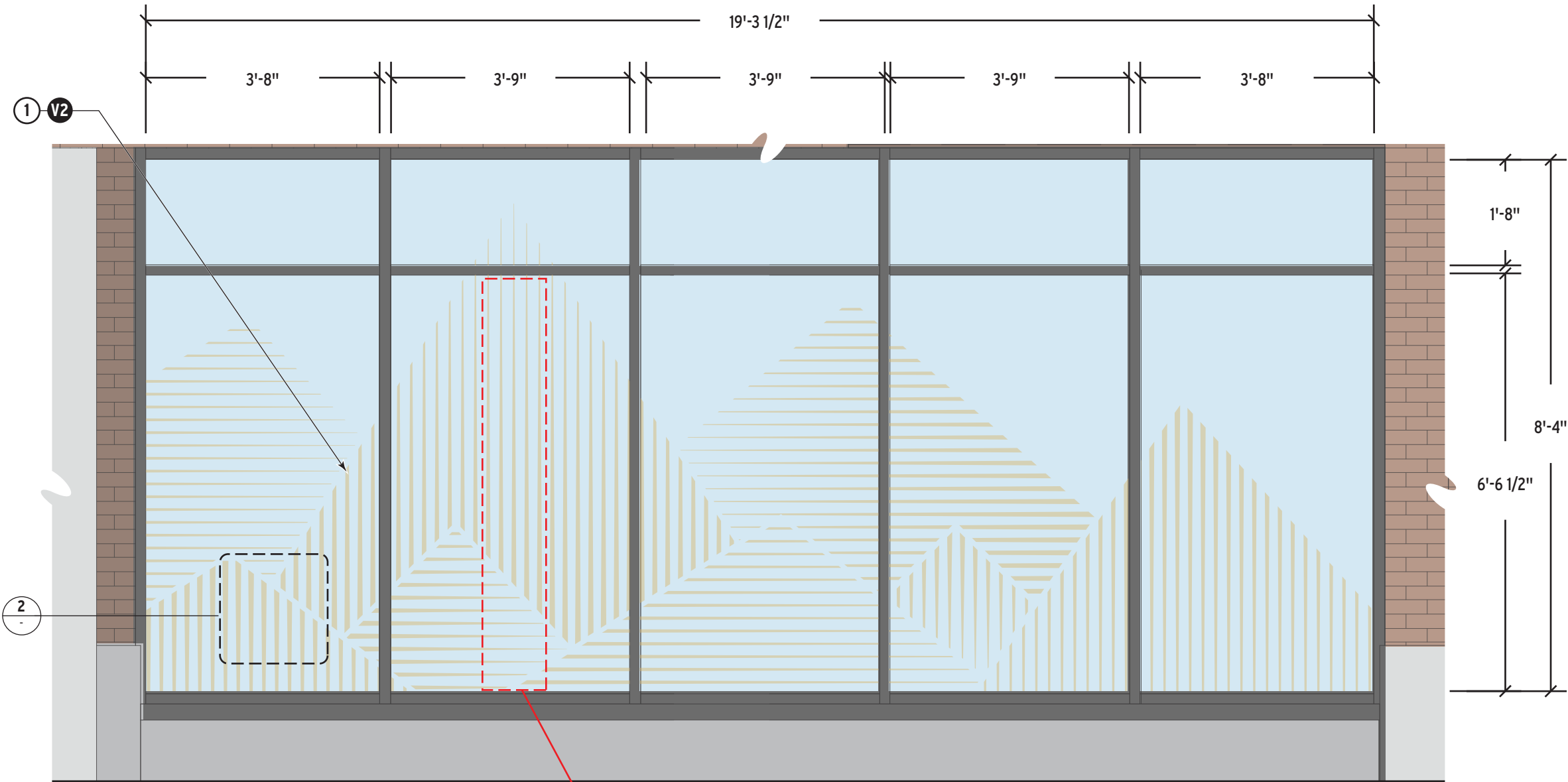


2

Sign Type X.C: Window Vinyl - Pattern Layout Detail View

-

Scale: 1 1/2" = 1' - 0"



1

Sign Type X.C: Window Vinyl - Pattern Layout Installation

-

Scale: 1/2" = 1' - 0"

EXTERIOR SIGNAGE

CONFLUENCE // ENCORE

GENERAL NOTES

ALL SITE MEASUREMENTS ARE APPROXIMATE. FABRICATOR TO FIELD VERIFY TO DETERMINE EXACT DIMENSIONS & CONDITIONS.

- 1 Pre-cast concrete base. Footing as required by engineering. Footing not to be visible above grade. 1/8" thick brake-formed metal plates clad to all sides of base and painted to match color as noted.
- 2 1/8" thick internally illuminated pan channel letter E. Mechanically fastened to base with concealed hardware as required by engineering.
- 3 Face of letterform to be white acrylic to allow for edge illumination on front face.
- 4 1/8" thick, flat cut out aluminum letter face (that is 1/2" smaller than overall face of letter) to be applied to white acrylic letter face to allow for edge illumination effect.
- 5 Address to be etched and paint filled to match color as noted.

KEY PLAN

ALL SITE LOCATIONS ARE APPROXIMATE.



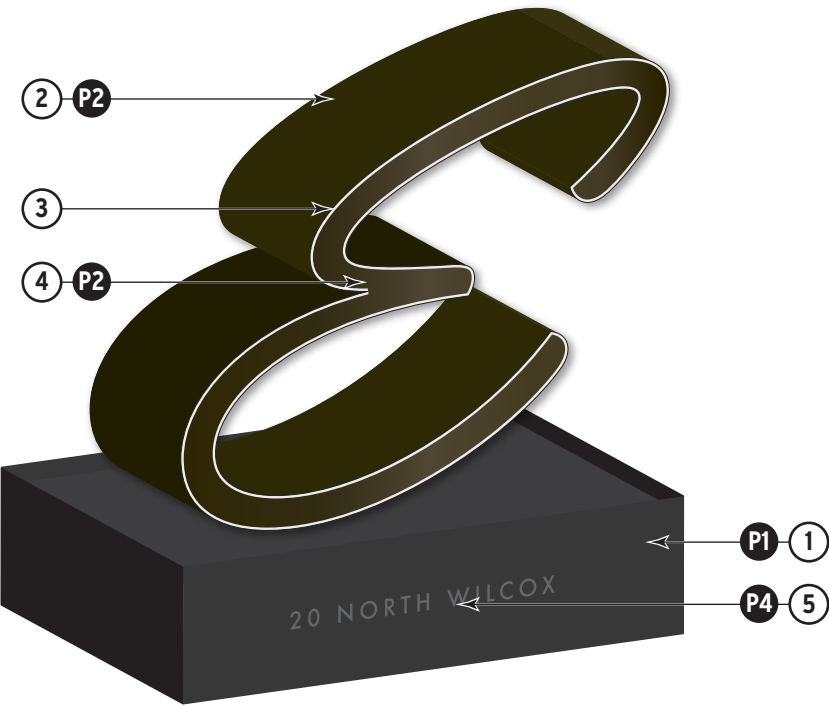
Package Issue Date Sheet Revision Date



2373 CENTRAL PARK BLVD. SUITE 204 | DENVER, CO 80238
303.892.9816 | ARTHOUSEDENVER.COM

©2020 Arthouse Design
All drawings and written material appearing herein constitute original and unpublished work of the designer and may not be duplicated, used or disclosed without written consent of designer.

X.B



4 Sign Type X.B: Monument Sign - Isometric View
- Scale: NTS



5 Sign Type X.B: Monument Sign - Exploded E Detail View
- Scale: NTS



1 Sign Type X.B: Monument Sign - Front View
- Scale: 1/2" = 1' - 0"

2 Sign Type X.B: Monument Sign - Side View
- Scale: 1/2" = 1' - 0"



3 Sign Type X.B: Monument Sign - Illuminated View
- Scale: 1/2" = 1' - 0"

Fabricator to submit full scale sample of Encore logo letter "E"



2 Sign Type X.E: Garage Entry ID Sign
- Scale: 3/8" = 1' - 0"

3 Sign Type X.E: Garage Entry ID Sign - Side View
- Scale: 3/8" = 1' - 0"



1 Garage Entrance - Partial Elevation
- Scale: 1/4" = 1' - 0"

EXTERIOR SIGNAGE

CONFLUENCE // ENCORE

GENERAL NOTES

ALL SITE MEASUREMENTS ARE APPROXIMATE. FABRICATOR TO FIELD VERIFY TO DETERMINE EXACT DIMENSIONS & CONDITIONS.

- 1" thick FCO letters painted to match color as noted and mounted flush to glass with suitable adhesive as required.
- 1/2" thick FCO letters painted to match color as noted and mounted flush to glass with suitable adhesive as required.

KEY PLAN

ALL SITE LOCATIONS ARE APPROXIMATE.



Package Issue Date

Sheet Revision Date



ARTHOUSE DESIGN

2373 CENTRAL PARK BLVD. STE 204
DENVER, CO 80238 | 303.892.9816
ARTHOUSEDENVER.COM

©2019 Arthouse Design
All drawings and written material appearing herein constitute original and unpublished work of the designer and may not be duplicated, used or disclosed without written consent of designer.

X.E