

Yearly Sales Tax Revenue



	2015	2016	2017	2018	2019	2020
Prior Year Collections *	\$ 231,220	\$ 166,999	\$ 175,216	\$ 82,847	\$ 129,200	\$ 72,191
Jan	2,529,828	2,708,833	2,939,153	3,303,966	3,446,276	3,786,586
Feb	2,356,187	2,628,882	2,942,236	3,044,888	3,305,719	3,675,617
Mar	3,249,291	3,274,629	3,856,165	4,103,325	4,364,815	4,414,247
Apr	2,697,616	2,991,981	3,559,192	3,487,035	3,928,407	3,620,904
May	3,089,557	3,235,763	3,703,943	4,043,517	4,181,083	4,303,627
Jun	3,607,345	3,836,672	4,304,723	4,493,392	4,987,026	5,407,974
Jul	3,307,172	3,547,768	3,899,703	4,080,724	4,402,098	-
Aug	3,336,810	3,551,913	3,898,049	4,266,934	5,295,701	-
Sep	3,513,438	3,946,825	4,190,106	4,319,640	4,823,346	-
Oct	2,999,064	3,528,073	3,513,275	3,984,307	4,008,060	-
Nov	3,055,060	3,479,493	3,877,471	4,104,407	4,316,630	-
Dec	4,367,857	4,855,770	5,426,023	5,562,531	5,980,282	-
Totals	\$ 38,340,444	\$ 41,753,601	\$ 46,285,255	\$ 48,794,666	\$ 53,039,443	\$ 25,208,955

Year to Year Change

8.9%

10.9%

5.4%

8.7%

Footnote:

* Prior Year Collections line item includes payments received in current year applicable to prior year sales tax returns. As prior year accounting records have been closed and the "previous period" amount is not deemed material to the previous year YTD total, the revenue will be recorded in December of the current year. Prior year monthly and annual totals will not change due to a receipt of a late payment.

Three Year Sales Tax Revenue Comparison

[illegible]

Monthly Sales Tax Comparisons

June 2019	June 2020	% Prior Month/Year Comparison
\$ 4,987,026	\$ 5,407,974	8.4%
2019	2020	% Change YTD
\$ 24,213,326	\$ 25,208,955	4.1%



Monthly Sales Tax Comparisons - By Geographical Area

Category	June 2019	June 2020	% Prior Month/Year Comparison	% Total Month
Milestone/Metzler	\$ 1,065,264	\$ 1,139,908	7.0%	21.4%
Promenade	717,757	832,440	16.0%	15.6%
Outlet Mall	654,334	550,501	-15.9%	10.3%
Out of State	543,479	671,916	23.6%	12.6%
Out of Town	530,410	556,244	4.9%	10.4%
Downtown	399,526	414,290	3.7%	7.8%
Wolfensberger	213,682	210,602	-1.4%	4.0%
Area Around Outlet Mall	215,365	266,192	23.6%	5.0%
Founders Market Place	140,748	169,246	20.2%	3.2%
Audit Revenue	110,662	170,037	53.7%	3.2%
Plum Creek	118,861	127,099	6.9%	2.4%
Justice	114,860	93,774	-18.4%	1.8%
Misc/ Other	64,794	65,810	1.6%	1.2%
Meadows	74,930	56,296	-24.9%	1.1%
Remote Seller	22,354	83,619	274.1%	1.6%
Category	2019 YTD	2020 YTD	% Change YTD	% Total YTD
Milestone/Metzler	\$ 5,453,733	\$ 5,782,263	6.0%	23.2%
Promenade	3,953,469	4,318,322	9.2%	17.3%
Outlet Mall	3,146,620	1,852,943	-41.1%	7.4%
Out of State	2,323,146	2,925,499	25.9%	11.7%
Out of Town	2,156,184	2,394,547	11.1%	9.6%
Downtown	2,014,369	1,989,501	-1.2%	8.0%
Wolfensberger	1,200,648	1,191,380	-0.8%	4.8%
Area Around Outlet Mall	910,428	1,082,838	18.9%	4.3%
Founders Market Place	820,005	1,007,081	22.8%	4.0%
Audit Revenue	508,875	883,770	73.7%	3.5%
Plum Creek	522,357	549,561	5.2%	2.2%
Justice	520,388	478,596	-8.0%	1.9%
Misc/ Other	269,119	234,823	-12.7%	0.9%
Meadows	329,292	281,829	-14.4%	1.1%
Remote Seller	84,693	236,002	178.7%	0.9%

Sales Tax Districts

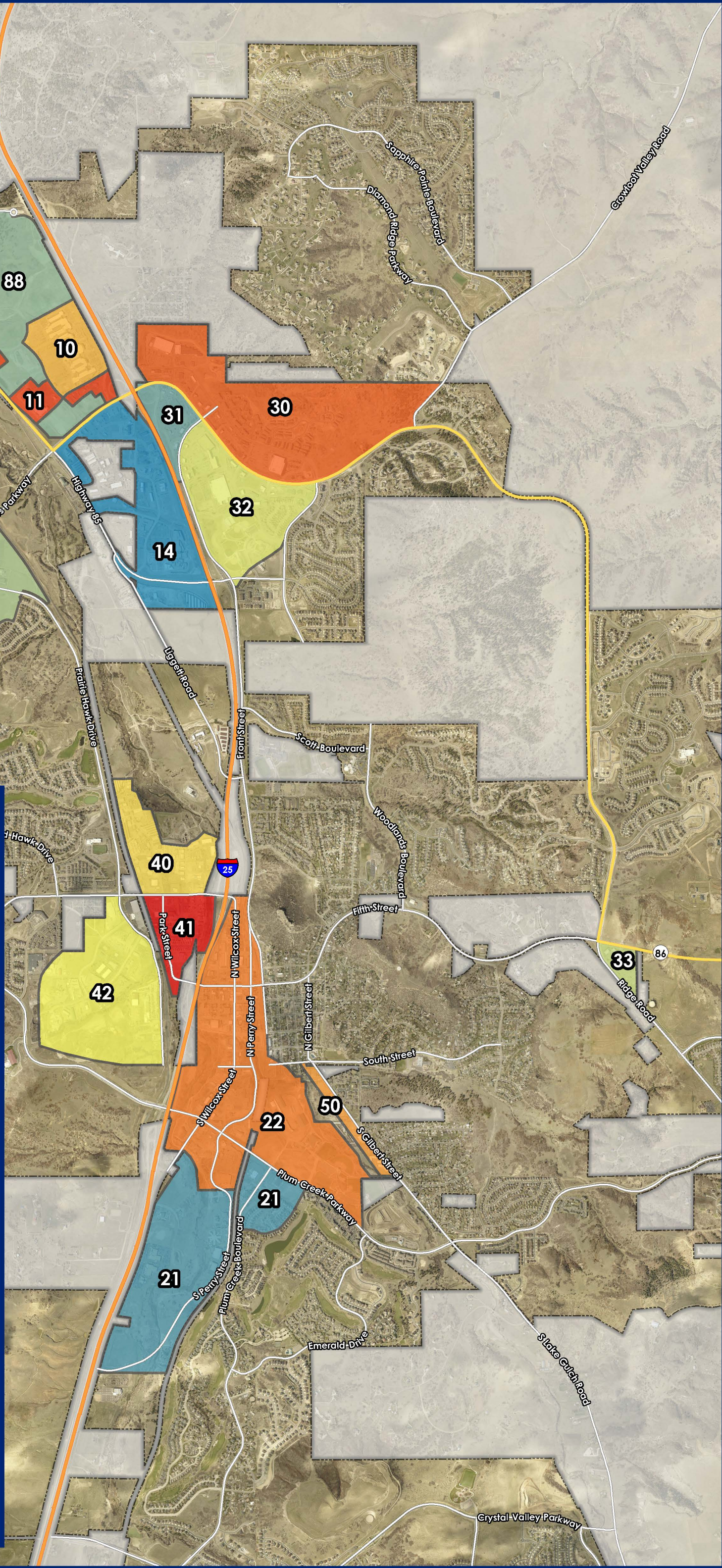
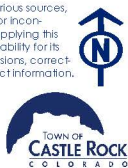
Town of Castle Rock

Legend


- 10, Outlets at Castle Rock
- 11, Area Around Outlet Mall
- 12, Meadows
- 14, Justice
- 21, Plum Creek
- 22, Downtown
- 30, I-25 Founders SE
- 31, S Founders Pkwy
- 32, Milestone
- 33, Founders Marketplace
- 40, Malibu
- 41, Kinner
- 42, Atchison
- 50, Gilbert
- 88, Promenade

0 0.25 0.5 1
Miles

Disclaimer: The data presented has been compiled from various sources, each of which introduces varying degrees of inaccuracies or inconsistencies. Such discrepancies in data are inherent and in supplying this product to the public the Town of Castle Rock assumes no liability for its use or accuracy. For questions or comments regarding omissions, corrections, or updates please visit CRgov.com/directory for contact information.
Copyright 2017, Town of Castle Rock
Coordinate System: SPCS Colorado Central (0502)
Projection: Lambert Conformal Conic
Datum: North American 1983
Units: Foot US
Creation Date: 5/5/2017



Monthly Sales Tax Comparisons

June 2019	June 2020	% Prior Month/Year Comparison		
\$ 4,987,026	\$ 5,407,974	8.4%		
2019	2020	% Change YTD		
\$ 24,213,326	\$ 25,208,955	4.1%		
Monthly Sales Tax Comparisons - By Industry				
Category	June 2019	June 2020	% Prior Month/Year Comparison	% Total Month
Food and General Merchandise	\$ 1,229,014	\$ 1,416,978	15.3%	26.2%
Apparel and Accessories	694,955	611,284	-12.0%	11.3%
Restaurants & Bars	581,177	568,674	-2.2%	10.5%
Misc Retail	531,714	747,911	40.7%	13.8%
Home and Garden	427,960	551,130	28.8%	10.2%
Utilities	164,912	151,891	-7.9%	2.8%
Auto and Auto Items	220,372	228,006	3.5%	4.2%
Communication	110,531	137,085	24.0%	2.5%
Furniture and Home Décor	162,109	200,509	23.7%	3.7%
Audit Revenue	110,662	170,037	53.7%	3.1%
Leasing and Rentals	151,665	132,199	-12.8%	2.4%
Agricultural and Construction	159,137	187,691	17.9%	3.5%
Services	179,878	107,400	-40.3%	2.0%
Wholesale and Manufacturing	77,329	71,403	-7.7%	1.3%
Ranch Supply/Pet Needs	124,159	104,705	-15.7%	1.9%
Hotel	61,452	21,071	-65.7%	0.4%
Category	2019 YTD	2020 YTD	% Change YTD	% Total YTD
Food and General Merchandise	\$ 6,730,325	\$ 8,001,396	18.9%	31.7%
Apparel and Accessories	3,409,589	2,103,188	-38.3%	8.3%
Restaurants & Bars	3,096,437	2,755,666	-11.0%	10.9%
Misc Retail	2,418,943	2,922,092	20.8%	11.6%
Home and Garden	1,881,054	2,293,835	21.9%	9.1%
Utilities	1,181,471	1,121,371	-5.1%	4.4%
Auto and Auto Items	1,083,866	1,083,348	0.0%	4.3%
Communication	665,398	639,467	-3.9%	2.5%
Furniture and Home Décor	700,882	774,932	10.6%	3.1%
Audit Revenue	508,875	883,770	73.7%	3.5%
Leasing and Rentals	560,631	610,523	8.9%	2.4%
Agricultural and Construction	657,596	716,032	8.9%	2.8%
Services	433,240	444,974	2.7%	1.8%
Wholesale and Manufacturing	318,035	278,480	-12.4%	1.1%
Ranch Supply/Pet Needs	359,889	473,826	31.7%	1.9%
Hotel	207,095	106,055	-48.8%	0.4%
* YTD break out does not include prior year collections				