



## **MEMORANDUM**

**To:** Honorable Mayor and Members of Town Council

**From:** Matt Gohl, Special Projects Manager

**Date:** June 26, 2020

**Title:** Discussion/Direction: Public Health Department

---

### **Executive Summary**

The following discussion is in response to the Town Council request for information regarding formation of a municipal health department. Colorado Revised Statutes require the formation of public health agencies in counties, districts or municipalities. There are currently no municipally operated health departments in Colorado that do not also comprise county operations (i.e. Broomfield, Boulder, Denver). Castle Rock, and all of Douglas County, are part of the Tri-County Health Department, which also serves Adams and Arapahoe counties.

A primary benefit of forming a municipal health department for Castle Rock is that it provides a Town-specific approach to public health for Town residents. Castle Rock would be able to gain limited local control by representing its public health needs separately from other municipalities and counties within the TCHD service area. Despite this independence, a Town of Castle Rock health department would remain under the authority of the Colorado Department of Public Health and Environment (CDPHE). This can be seen in the recent COVID pandemic response. County and district health departments are permitted to apply more stringent restrictions than the State, but cannot be less restrictive without approval from CDPHE. While gaining some local control, a municipally operated health department would not be exempt from State orders and variances would still require State approval. Colorado's structure for public health agencies has placed responsibility with appointed public health professionals rather than elected officials, which proponents of this structure indicate keeps public health decisions from becoming political matters.

Public health agencies can be separate from, or combined with, human services departments that offer financial assistance programs, adult protection services for at-risk adults and more. Public health services for Castle Rock residents are provided by TCHD while human services programs are offered through Douglas County. The following discussion pertains only to public health services and impacts of withdrawing from TCHD to form a municipal health department. The following discussion is comprised of three sections:

- Statutory Overview: Provides background on the formation and modification of public health agencies as identified in the Colorado Revised Statutes, including duties and responsibilities.
- Colorado Health Departments: High level review of health departments in Colorado, with more detailed information regarding the structure and services of the Tri-County Health Department.
- Budget Impact: Financial considerations of a municipal health department prepared by utilizing the City and County of Broomfield as a comparative entity. Staff estimates that annual operating costs of a municipal health department would be \$3 million plus additional one-time costs for a facility and equipment. An additional revenue source, such as an additional mill levy on Castle Rock residents, would be required.

## **Discussion**

Formation of public health agencies, including structure and required duties/functions are provided in Title 25 of the Colorado Revised Statutes (CRS). The following discussion is intended to provide a summary of the statutory basis for public health agencies, an overview of health departments in Colorado and information on the Tri-County Health Department (TCHD), which serves Douglas County and the Town of Castle Rock.

## **Statutory Overview**

### *Formation and Modification of Public Health Agencies*

CRS Title 25 establishes the State Department of Public Health and Environment (CRS §25-1-102) and requires formation of County or district public health agencies (CRS §25-1-506). Contiguous counties are able to merge into a public health district that serves all unincorporated and municipal corporations within the boundaries of the district. Formation of municipal public health agencies is included in CRS §25-1-507, which states:

*Except as otherwise provided by law, the mayor and council of each incorporated town or city, whether incorporated under general statutes or special charter in this state, may establish a municipal public health agency and appoint a municipal board of health. If appointed, the municipal board of health shall have all the powers and responsibilities and perform all the duties of a county or district board of health as provided in this part 5 within the limits of the respective city or town of which they are the officers.*

Note that references to “part 5” in this discussion refer to the section of CRS Title 25 entitled “Public Health” in its entirety.

### *Joining or Withdrawal from a Public Health Agency*

Counties that border an existing district may join an existing health agency by agreement of the county commissioners (CRS §25-1-513). Counties may also join with other counties to create a public health district as established in (CRS §25-1-506).

Municipalities may withdraw from a county or district public health agency by resolution of the city council (CRS §25-1-513 (3)). Counties are also permitted to withdraw from a district by a resolution of the board of county commissions (CRS §25-1-513 (2)). Upon

withdrawal from a district, the county or municipality creates its own public health agency or joins another contiguous county to form a new district.

### *Public Health Board Oversight/Appointment*

County or district public health agencies are under the oversight of a public health board (CRS §25-1-108). The public health board is comprised of at least five members serving five-year terms. County health board members are appointed by county commissioners, and district health boards are required to have at least one representative from each county in the district. District members are selected by an “appointments committee” that consists of one county commissioner from each county within the public health district. Appointees must reside in the county in which they represent, and there are requirements in place to ensure that “no business or professional group or governmental entity shall constitute a majority of the district board” (CRS §25-1-108(3)(b)). Officers, such as the president of the board, are elected to the position by the members of the board. In addition to required duties of the health department, which are discussed later, public health boards also have the following powers and duties as stipulated in CRS §25-1-108(5):

- (a) To develop and promote the public policies needed to secure the conditions necessary for a healthy community;
- (b) To approve the local public health plan completed by the county or district agency, and to submit the local plan to the state board for review;
- (c) To select a public health director and (d) to fill a vacancy in the public health director position;
- (e) To provide, equip, and maintain suitable offices and all necessary facilities for the proper administration and provision of core public health services, as defined by the state board;
- (f) To determine general policies to be followed by the public health director in administering and enforcing public health laws, orders, and rules of the county or district board, and orders, rules, and standards of the state board;
- (g) To issue orders and to adopt rules not inconsistent with the public health laws of this state nor with the orders or rules of the state board as the county or district board may deem necessary for the proper exercise of the powers and duties vested in or imposed upon an agency or county or district board by this part 5;
- (h) To act in an advisory capacity to the public health director on all matters pertaining to public health;
- (i) To hold hearings, administer oaths, subpoena witnesses, and take testimony in all matters relating to the exercise and performance of the powers and duties vested in or imposed upon a county or district board;
- (j) To provide environmental health services and to assess fees to offset the actual, direct cost of such services;
- (k) To accept and, through the public health director, to use, disburse, and administer all federal aid, state aid, or other property, services, or moneys allotted to an agency for county or district public health functions or allotted without designation of a specific agency for purposes that are within the functions of an agency, and to prescribe, by rule consistent with the laws of this state, the conditions under which the property, services, or moneys shall be accepted and

administered. The county or district board is empowered to make agreements that may be required to receive such moneys or other assistance.

- (l) To approve, as provided for in section 25-1-520, a clean syringe exchange program proposed by an agency. A county board of health or district board of health shall not be required to approve a proposed program.

### *Public Health Duties and Responsibilities*

In addition to the duties of the health board shown previously, public health agencies have numerous statutorily required duties and responsibilities. While subject to available appropriations, public health agencies “shall provide or arrange for the provisions of services necessary to carry out the public health laws and rules of the state board, the water quality control commission, the air quality control commission, and the solid and hazardous waste commission according to the specific needs and resources available within the community.” (CRS §25-1-506(3)(a)). These needs are determined by the board, statewide public health improvement plan and a county/district/municipal public health plan. Additional duties and responsibilities are outlined in CRS §25-1-506(3) and include:

- Preparation and completion of a community health assessment at least every five years (this collaborative process includes community engagement in plan development and implementation/evaluation over the course of several years)
- Advise the health board on public policy issues necessary to protect public health and environment
- Provide quality core health services that are deemed essential by the state board and within the statewide public health improvement plan
- Administer and enforce laws related to:
  - Public health, air pollution, solid and hazardous waste and water quality
  - Vital statistics
  - Orders, rules and standards of the state board
- Investigate and control the causes of epidemic or communicable diseases
- Establish, maintain and enforce isolation and quarantine for the purpose of protecting the public health
- Close schools and public places to prohibit gatherings of people when necessary to protect public health
- Investigate and abate nuisances when necessary in order to eliminate sources of epidemic or communicable diseases and conditions affecting public health
- Establish, maintain or make available chemical, bacteriological and biological laboratories, and to conduct such laboratory investigations and examinations as it may deem necessary or proper for the protection of the public health
- Purchase and distribute to licensed physicians and veterinarians, with or without charge, as the county or district board may determine upon considerations of emergency or need, approved biological or therapeutic products necessary for the protection of public health
- Initiate and carry out health programs consistent with state law that are necessary or desirable to protect public health and the environment
- Collect, compile and tabulate reports of marriages, dissolutions of marriage, and declarations of invalidity of marriage, births, deaths and morbidity, and to require any person having information with regard to the same to make such reports and submit such information as is required by law or the rules of the state board

- Make necessary sanitation and health investigations and inspections, on its own initiative or in cooperation with the state department, for matters affecting public health that are within the jurisdiction and control of the agency
- Collaborate with the state department and the state board in all matters pertaining to public health; the water quality control commission in all matters pertaining to water quality; the air quality control commission and the division of administration of the state department in all matters pertaining to air pollution; and the solid and hazardous waste commission in all matters pertaining to solid and hazardous waste
- Establish, subject to available appropriations, a child fatality prevention review team

If the board of health does not have sufficient appropriations to fulfill all of the duties stated above, the board is required to set priorities for fulfilling the duties and include the priority list in its public health plan.

### **Colorado Health Departments**

**Attachment A** includes a listing of all health departments in Colorado. As seen in the listing, there are no public health departments operated solely by municipalities in Colorado at this time. Certain municipalities such as Denver, Boulder and Broomfield, which are also counties, operate health departments. Public health matters for the Town of Castle Rock, as part of Douglas County, are under the oversight of the Tri-County Health Department (TCHD), which also serves Adams and Arapahoe counties. Following is more information about the history, structure and services provided by TCHD.

#### *Tri-County Health Department*

TCHD was formed by Adams, Arapahoe and Jefferson Counties on January 1, 1948. Jefferson County separated from the district health department in 1958 to create its own county health department, and Douglas County joined TCHD in 1966. Douglas County in 2009 reestablished TCHD as the public health agency of Douglas County. This was required by the Colorado Public Health Reauthorization Act of 2008. The purpose of this act was to ensure that public health services were available to everyone in Colorado.

TCHD's Board of Health is comprised of nine members, three from each county within the district. As provided by statute, board members serve five-year terms with staggered end dates. Board members are appointed by their respective County Commissioners. Douglas County residents interested in serving on this board can apply on the Douglas County website (<https://www.douglas.co.us/government/commissioners/citizen-advisory-boards-committees-and-commissions/>). Each of the current board members representing Douglas County have medical accreditations including Master of Public Health (MPH), Nurse Practitioner (NP) and Registered Nurse (RN). Current board members representing Douglas County are as follows:

- Zachary Nannestad, MPH (Term expires January 2024) – Board Vice President
- Marsha Jaroch, NP (Term expires January 2025)
- Paulette Joswick, RN (Term expires January 2023)

TCHD serves more than 1.5 million people in the three-county area and operates out of 11 offices across the district, including one in Castle Rock. Note that formation of a

municipal health department may be complicated by the unincorporated enclaves located throughout Castle Rock. Town law enforcement has successfully divided responsibilities in these enclaves, but it is important to understand nuances associated with forming a municipal health department. For example, Castle View High School would be under a Town municipal health department while Douglas County High School would remain with TCHD since it is located in unincorporated Douglas County. Similarly, restaurants/businesses in the Castleton Court area would be under the jurisdiction of different health agencies depending on which side of the street they are located.

In addition to the Statewide public health improvement plan, each health agency is required to prepare a health plan for its specific area. The 2019 – 2024 Public Health Improvement Plan for TCHD includes four priorities, which are listed with vision statements below:

- Access to Mental and Physical Health Care Services
  - *Vision: In a healthy community, all people across the life course, regardless of their income or other circumstances, can access high-quality physical health, mental health, and substance use services.*
- Mental Health
  - *Vision: In a healthy community, positive mental health and social connections allow people to have the mental and physical energy, vitality, and resilience to live joyfully and cope with the stresses of life, work productively, and make meaningful contributions to their communities.*
- Health and Food
  - *Vision: In a healthy community, all residents can access safe, nutritious, affordable, and culturally relevant food and are able to practice healthy eating habits.*
- Health and Housing
  - *Vision: In a healthy community, quality, attainable housing is available, and people have the tools and resources to stay in their communities and feel connected to their neighborhood.*

In addition to required core services, these four priorities help guide the programs offered by TCHD. The department is divided into eight functions as demonstrated on its organizational chart in **Attachment B**. In addition to the necessary administrative functions (finance, budget, facilities, etc.) and human resources functions, there are six programmatic divisions that are responsible for delivering services to the 1.5 million people in the district. According to TCHD’s website (<https://www.tchd.org/572/Division-Descriptions>), descriptions of these six programmatic divisions are shown below:

| <b><i>Nutrition Division</i></b>   | <b><i>Nursing Division</i></b>  | <b><i>Environmental Health Division</i></b>  |
|--|---|--|
| Promotes wellness across the lifespan through nutrition policy and programs to improve the nutritional health status of clients and the community. | Focuses on promoting good health for children and adults through linkages to health insurance and health care services, nurse case management, disease prevention and clinical, preventive and health education programs. | Focuses on preventing communicable disease and environmental conditions that could be harmful to health through education/consultation, response and investigation and enforcement of regulations. |

***Emergency Preparedness, Response, and Communicable Disease Surveillance Division***  
 Leads agency efforts to promote coordination, collaboration and communication among all divisions in TCHD to ensure that public health is an effective partner in preparedness, response and recovery efforts. Additionally, the division conducts surveillance, investigation, and mitigation efforts in response to incidents of communicable disease.

***Planning and Information Management Division***  
 Helps programs to achieve maximum efficiency and effectiveness through data collection, analysis and mapping services, informatics, information technology, performance management and quality improvement, program planning and accreditation.

***Community Health Promotion Division***  
 Works directly with community members and leaders to promote health and wellness across all ages through programs including aging initiatives and injury prevention, community nutrition, diabetes education, healthy beverage partnership, mental and behavioral health promotion, tobacco and substance abuse prevention and worksite wellness and breastfeeding policy work.

There are numerous programs offered through TCHD related to public and environmental health. Some of the specific services provided are listed below with more information included in the brochure in **Attachment C**.

- |   |  |
|---|--|
| <ul style="list-style-type: none"> <li>• Provision of vital records</li> <li>• Restaurant inspections</li> <li>• On-site wastewater treatment system approvals</li> <li>• Childcare center inspections</li> <li>• Consultations on environmental exposures</li> <li>• Land use consultation</li> <li>• Methamphetamine laboratory clean-up consultation</li> <li>• Emergency preparedness and response</li> <li>• Disease outbreak identification and management</li> </ul> | <ul style="list-style-type: none"> <li>• Analysis of community health data</li> <li>• Tobacco prevention</li> <li>• Injury prevention</li> <li>• Family planning</li> <li>• Immunizations</li> <li>• Maternal and Child Health (MCH) services</li> <li>• Women, Infants and Children (WIC) program</li> <li>• Nutrition education</li> <li>• Public communication</li> </ul> |
|---|--|

The 2020 adopted budget for TCHD is approximately \$44.1 million. There are numerous funding sources that support this budget including county appropriations, county program-specific funds, grants/contracts, fees/donations, State funds, Federal pass-through funds, Medicaid funds, use of fund balance and in-kind revenue.

County appropriations are direct amounts assessed to the three counties within TCHD and make up 25% of total revenue. These appropriations are determined by County populations and a per-capita rate for services. For 2020, this per-capita rate is \$7.10. Douglas County experienced a 5% increase for 2020, resulting in a contribution of \$2,486,143 to Tri-County Health Department. There is no specific mill levy within Douglas County that is assessed for the purpose of funding this contribution to TCHD.

### **Budget Impact**

If Town Council wishes to pursue the creation and development of a municipal public health department, additional planning related to one-time capital costs (office building, land, equipment, etc.) and ongoing operational funding will be required. Town staff has performed a high-level analysis of the City and County of Broomfield budget in order to better understand the financial support required to operate a public health department.

The U.S. Census Bureau estimates Broomfield's population to be 70,465 as of July 2019, making it a reasonable comparison with the Town of Castle Rock.

The City and County of Broomfield offers both public health and human services to its residents. Broomfield's public health department offers numerous services consistent with TCHD including, but not limited to, reproductive health, immunization, substance abuse programs, tobacco education and vital statistics.

Broomfield's public health division is budgeted within the county's general fund. According to the adopted budget for 2020, budgeted expenditures total \$2,940,048. This budget information equates to per-capita costs of \$41.72 for Broomfield, compared to the current Douglas County contribution of \$7.10 to TCHD for each County resident. This budget provides funding 16.24 full-time and 7 part-time personnel including a director, assistant director, administrative staff, nurses, reproductive health administrator, nutritionist, public health educator, environmental health specialists, emergency preparedness coordinator and more.

A portion of the funding for Broomfield's health department comes from a Public Health mill levy of 1.230, estimated to result in \$1,859,265 in 2020. While not explicitly detailed within the budget, it is reasonable to assume that other sources of funds used to support public health include charges for service, licenses/permitting and intergovernmental revenue such as grants.

Assuming comparable financial needs for a municipal health department in Castle Rock, current revenues would not be able to sustain operational costs. A new revenue source, such as a property tax assessment, would need to be identified and approved for this purpose. Based on the Town's 2020 valuation, staff estimates that 3.0 mills would need to be assessed on Castle Rock residents to support municipal health department operations. Given TABOR requirements, Castle Rock voters would be required to approve a new tax needed to operate a municipal health department. If Town Council would like to include a proposed municipal health mill levy to Castle Rock voters as part of the November election, Town Council would need to prepare and approve the first reading of the ballot question no later than August 18, 2020.

Any mill levy – likely to be 4 to 5 mills including capital costs – approved by voters should be exempt from TABOR revenue growth limitations, so that the addition of this revenue does not harm our ability to adequately fund core Town services such as police, fire and road maintenance. This “De-brucing” should occur concurrent with voter approval of any mill levy. Additionally, a new property tax mill levy for a local health department competes with future revenue needs for core services. This decade is likely to see the need to ask voters for a property tax mill levy to supplement existing revenue streams to support the Town's public safety – police and fire – departments going forward. Four or five mills of property taxes for a health department may make it unlikely that voters will support a new and additional mill levy for police and fire that will likely be needed in the future for Castle Rock to maintain our levels of service in this area.

The Town does not currently have available facility space to house a municipal health department. A municipal health department would require construction or acquisition of space. TCHD's Castle Rock office is located at 410 S. Wilcox St. and is approximately 12,000 square feet. TCHD acquired this site in 2019 for a cost of \$4.3 million. Castle



Rock Water prepared a contract for construction of a new administration building to be located on existing Town property. This facility was estimated to be roughly 13,000 square feet and Town Council approved a construction contract for \$4 million for the project. Based on this information, it is reasonable to assume that construction or acquisition of a health department facility for Castle Rock would cost between \$4 - \$5 million depending on specific needs including locations, land/facility availability and site specifications. In addition to physical space, the facility would need to be equipped appropriately. Staff has not researched the investment required and does not have an estimate for these one-time costs. Similar to operating costs, a funding source would need to be identified for these one-time costs as well.

The Town does not have the authority to collect impact fees for a public health purpose, so debt issuance would likely be required to accommodate facility space and equipment costs. In addition to an operating mill levy, the Town could ask voters to approve an additional debt service mill levy to repay debt over time. The combined mill levy to Castle Rock residents to fund public health operations and debt service for one-time costs could be up to 5 mills depending on actual costs.

### **Next Steps**

Noting the deadline for Council consideration for first reading on an ordinance for a mill levy is the only Council meeting in August – August 18, staff is providing this memo to Council at this time. With this information in Council's hands for review, Councilmembers can now ask staff questions. Staff also now plans to reach out to Douglas County staff, Tri-County health department staff and other Douglas County municipality staff to discuss this issue. Staff plans to put this memo on the July 21 Council agenda for discussion with any additional information gained from these other entities. It will be important for Council to bear in mind that the property tax cost of establishing a local health department cannot guarantee that such department's local public health orders would not be superseded by CDPHE orders. If a Town health department public health order was contrary to the views of CDPHE regarding public health, it is likely that such Town order would be overruled and superseded.

A possible alternative to a property tax mill levy increase and the establishment of a Town operated health department is to seek legal requirements that any public health order from Tri-County Health Department impacting the Town of Castle Rock only occur with the majority concurrence of the Castle Rock Town Council. This would allow for Town elected officials to determine the appropriateness of any public health order (PHO) impacting Castle Rock residents and businesses. This would likely require either statutory changes and/or changes with intergovernmental agreements (IGAs) between the County and TCHD. This does have the advantage of getting at an important issue in recent months concerning the lack of local control of PHOs from TCHD, but it would not change the authority of the State acting through CDPHE that would require State statutory changes.

### **Attachments**

**Attachment A:** Colorado Health Department Listing

**Attachment B:** Tri-County Health Department Organizational Chart

**Attachment C:** Tri-County Health Department Brochure

## Coronavirus Disease 2019 (COVID-19) in Colorado: State & National Resources

# Find your local public health agency

---

[Back to contact us](#)

### Select your county

[Adams](#) | [Alamosa](#) | [Arapahoe](#) | [Archuleta](#) | [Baca](#) | [Bent](#) | [Boulder](#) | [Broomfield](#) | [Chaffee](#)  
[Cheyenne](#) | [Clear Creek](#) | [Conejos](#) | [Costilla](#) | [Crowley](#) | [Custer](#) | [Delta](#) | [Denver](#) | [Dolores](#) | [Douglas](#) | [Eagle](#)  
[El](#)  
[Paso](#) | [Elbert](#) | [Fremont](#) | [Garfield](#) | [Gilpin](#) | [Grand](#) | [Gunnison](#) | [Hinsdale](#) | [Huerfano](#) | [Jackson](#) | [Jefferson](#) | [Kiowa](#)  
[Kit Carson](#) | [La Plata](#) | [Lake](#) | [Larimer](#) | [Las Animas](#) | [Lincoln](#) | [Logan](#) | [Mesa](#) | [Mineral](#) | [Moffat](#) | [Montezuma](#)  
[Montrose](#) | [Morgan](#) | [Otero](#) | [Ouray](#) | [Park](#) | [Phillips](#) | [Pitkin](#) | [Prowers](#) | [Pueblo](#) | [Rio Blanco](#) | [Rio Grande](#)  
[Routt](#) | [Saguache](#) | [San Juan](#) | [San Miguel](#) | [Sedgwick](#) | [Summit](#) | [Teller](#) | [Washington](#) | [Weld](#) | [Yuma](#)

### Adams

[Tri-County Health Department](#)

Serving Adams, Arapahoe and Douglas counties

6162 S. Willow Drive, Suite 100

Greenwood Village, CO 80111

303-220-9200

### Alamosa

[Alamosa County Public Health Department](#)

8900 Independence Way

Alamosa, CO 81101

719-589-4848

### Arapahoe

[Tri-County Health Department](#)

Serving Adams, Arapahoe and Douglas counties

6162 S. Willow Drive, Suite 100

Greenwood Village, CO 80111

303-220-9200

### Archuleta

[San Juan Basin Public Health](#)

Serving Archuleta and La Plata counties

281 Sawyer Drive, Suite 300

Durango CO 81302

970-247-5702

### Baca

[Baca County Public Health Agency](#)

741 Main St., Suite 4

Springfield, CO 81073  
719-523-6621

## Bent

[Bent County Public Health Agency](#)

701 Park Ave.  
Las Animas, CO 81054  
719-456-0517

## Boulder

[Boulder County Public Health](#)

3450 Broadway  
Boulder, CO 80304  
303-441-1100

## Broomfield

[Broomfield Public Health and Environment](#)

100 Spader Way  
Broomfield, CO 80020  
720-887-2220

## Chaffee

[Chaffee County Public Health](#)

448 E. First St., Suite 137  
Salida, CO 81201  
719-539-4510

[Chaffee County Environmental Health](#)

Chaffee County Annex  
112 Linderman Ave.  
Buena Vista, CO 81211  
719-530-5572

## Cheyenne

[Cheyenne County Public Health Agency](#)

P.O. Box 38  
560 W. Sixth St. N  
Cheyenne Wells, CO 80810  
719-767-5616

## Clear Creek

[Clear Creek County Public and Environmental Health](#)

P.O. Box 2000  
405 Argentine St.  
Georgetown, CO 80444  
303-670-7946

## Conejos

Conejos County Public Health and Nursing Service

P.O. Box 78  
19023 Highway 285  
La Jara, CO 81140  
719-274-4307

## Costilla

Costilla County Public Health Agency

P.O. Box 99  
233 Main Street, Suite C  
San Luis, CO 81152  
719-672-3332

## Crowley

Otero County Health Department

Serving Crowley and Otero counties  
13 W. Third St.  
Room 111, County Courthouse  
La Junta, CO 81050  
719-383-3040

## Custer

Custer County Public Health Agency

10 Hermit Lane #5  
Silver Cliff, CO 81252  
[publichealth@custercountygov.com](mailto:publichealth@custercountygov.com)  
Phone: 719-783-3369  
Fax: 719-783-0959

## Delta

Delta County Department of Health and Human Services

255 W. Sixth St.  
Delta, CO 81416  
970-874-2165

## Denver

Denver Department of Public Health and Environment

101 W Colfax Ave, Suite 800  
Denver, CO 80202  
720-865-5365

## Dolores

Dolores County Public Health Agency

P.O. Box 368  
425 North Main Street, Suite A

Dove Creek, CO 81324  
970-677-2387

## Douglas

[Tri-County Health Department](#)  
Serving Adams, Arapahoe and Douglas counties  
6162 S. Willow Drive, Suite 100  
Greenwood Village, CO 80111  
303-220-9200

## Eagle

[Eagle County Public Health Agency](#)  
P.O. Box 660  
551 Broadway  
Eagle, CO 81631  
970-328-8840

[Eagle County Environmental Health Department](#)  
P.O. Box 179  
500 Broadway  
Eagle, CO 81631  
970-328-8755

## El Paso

[El Paso County Public Health](#)  
1675 Garden of the Gods Road, Suite 2044  
Colorado Springs, CO 80907  
719-578-3199

## Elbert

[Elbert County Health and Human Services](#)  
P.O. Box 924  
75 Ute Ave.  
Kiowa, CO 80117  
303-621-3144

## Fremont

[Fremont County Department of Public Health and Environment](#)  
201 N. Sixth Street  
Cañon City, CO 81212  
719-276-7450

## Garfield

[Garfield County Public Health](#)  
195 W. 14th St.  
Rifle, CO 81650  
970-625-5200

## Gilpin

[Gilpin County Public Health Agency](#)

2960 Dory Hill Road, Suite 120

Black Hawk, CO 80422

303-582-5803

## Grand

[Grand County Public Health](#)

P.O. Box 264

150 Moffat Ave.

Hot Sulphur Springs, CO 80451

970-725-3288

## Gunnison

[Gunnison County Public Health](#)

225 N. Pine St., Suite E

Gunnison, CO 81230-2333

970-641-0209

## Hinsdale

[Silver Thread Public Health District](#)

Serving Mineral and Hinsdale counties

304 W. Third St.

Lake City, CO 81235

970-944-0321

[Hinsdale County Environmental Health](#)

P.O. Box 277

311 N. Henson St.

Lake City, CO 81235

970-944-2319

## Huerfano

Las Animas-Huerfano Counties District Health Department

Serving Huerfano and Las Animas counties

412 Benedicta Ave.

Trinidad, CO 81082

719-846-2213

## Jackson

[Jackson County Public Health Agency](#)

P.O. Box 1019

Walden, CO 80480

970-723-8572

## Jefferson

[Jefferson County Public Health](#)

645 Parfet St.  
Lakewood, CO 80215  
303-232-6301

## Kiowa

[Prowers County Public Health](#)

Serving Kiowa and Prowers Counties  
P.O. Box 414  
1309 S. Maine  
Eads, CO 81036  
719-438-5782

## Kit Carson

[Kit Carson County Department of Public Health and Environment](#)

P.O. Box 70  
252 S. 14th St.  
Burlington, CO 80807  
Phone: 719-346-7158  
Fax: 719-346-8066

## La Plata

[San Juan Basin Public Health](#)

Serving Archuleta and La Plata counties  
P.O. Box 140  
281 Sawyer Drive  
Durango, CO 81302  
970-247-5702

## Lake

[Lake County Public Health Agency](#)

P.O. Box 626  
112 W. Fifth St.  
Leadville, CO 80461  
719-486-2413

## Larimer

[Larimer County Health Department](#)

1525 Blue Spruce Drive  
Fort Collins, CO 80524  
970-498-6700

## Las Animas

Las Animas-Huerfano Counties District Health Department  
Serving Huerfano and Las Animas counties  
412 Benedicta Ave.  
Trinidad, CO 81082  
719-846-2213

## Lincoln

[Lincoln County Department of Public Health](#)

P.O. Box 125  
326 Eighth St.  
Hugo, CO 80821  
719-743-2526

## Logan

[Northeast Colorado Health Department](#)

Serving Logan, Morgan, Phillips, Sedgwick, Washington and Yuma counties  
700 Columbine St.  
Sterling, CO 80751  
970-522-3741

## Mesa

[Mesa County Health Department](#)

P.O. Box 20000-5033  
510 29 1/2 Road  
Grand Junction, CO 81502  
970-248-6900

## Mineral

[Silver Thread Public Health District](#)

Serving Mineral and Hinsdale counties  
304 W. Third St.  
Lake City, CO 81235  
970-944-0321

## Moffat

[Moffat County Public Health Agency](#)

221 W. Victory Way, Suite 130  
Craig, CO 81625  
970-870-5319

## Montezuma

[Montezuma County Public Health Agency](#)

106 W. North St.  
County Annex Building  
Cortez, CO 81321  
970-565-3056

## Montrose

[Montrose County Public Health](#)

1845 S. Townsend Ave.



Montrose, CO 81401  
970-252-5000

Montrose County Environmental Health Department

Serving Montrose and Ouray counties  
1845 S. Townsend Ave.  
Montrose, CO 81401  
970-252-5000

## Morgan

Northeast Colorado Health Department

Serving Logan, Morgan, Phillips, Sedgwick, Washington and Yuma counties  
700 Columbine St.  
Sterling, CO 80751  
970-522-3741

## Otero

Otero County Health Department

Serving Crowley and Otero counties  
13 W. Third St.  
Room 111, County Courthouse  
La Junta, CO 81050  
719-383-3040

## Ouray

Ouray County Public Health Agency

P.O. Box 670  
302 Second St.  
Ouray, CO 81427  
970-325-4670

Montrose County Environmental Health Department

Serving Ouray and Montrose counties  
1845 S. Townsend Ave.  
Montrose, CO 81401  
970-252-5000

## Park

Park County Public Health

P.O. Box 846  
825 Clark St.  
Fairplay, CO 80440  
719-836-4161

Park County Environmental Health

P.O. Box 216  
1246 County Road 16

Fairplay, CO 80440  
719-836-4252

## Phillips

[Northeast Colorado Health Department](#)

Serving Logan, Morgan, Phillips, Sedgwick, Washington and Yuma counties  
700 Columbine St.  
Sterling, CO 80751  
970-522-3741

## Pitkin

[Pitkin County Public Health Agency](#)

0405 Castle Creek Road, Suite 6  
Aspen, CO 81611  
970-920-5420

[Pitkin County Environmental Health](#)

76 Service Center Road  
Aspen, CO 81611  
970-920-5070

## Prowers

[Prowers County Public Health](#)

Serving Kiowa and Prowers counties  
1001 S. Main St.  
Lamar, CO 81052  
719-336-8721

## Pueblo

[Pueblo Department of Public Health and Environment](#)

101 W. Ninth St.  
Pueblo, CO 81003  
719-583-4300

## Rio Blanco

[Rio Blanco County Department of Public Health and Environment](#)

101 E. Main St.  
Rangely, CO 81648  
970-878-9525

## Rio Grande

[Rio Grande County Public Health Agency](#)

925 Sixth St., Room 101  
Del Norte, CO 81132  
719-657-3352

## Routt

**Routt County Public Health Agency**

136 6th Street  
PO Box 773749  
Steamboat Springs, CO 80477  
970-870-5319

**Saguache****Saguache County Public Health**

P.O. Box 68  
505 Third St.  
Saguache, CO 81149  
719-655-2533

**San Juan****San Juan County Public Health Service**

P.O. Box 619  
1315 Snowden St.  
Silverton, CO 81433  
970-387-0242

**San Miguel****San Miguel County Department of Public Health and Environment**

Public health:

P.O. Box 949  
333 W. Colorado Ave.  
Telluride, CO 81435  
970-728-4289

**Environmental Health**

P.O. Box 4130  
333 W. Colorado Ave.  
Telluride, CO 81435  
970-728-0447

**Sedgwick****Northeast Colorado Health Department**

Serving Logan, Morgan, Phillips, Sedgwick, Washington and Yuma counties  
700 Columbine St.  
Sterling, CO 80751  
970-522-3741

**Summit****Summit County Public Health**

P.O. Box 2280  
360 Peak One Drive, Suite 230  
Frisco, CO 80443  
970-668-9161

### Summit County Environmental Health

P.O. Box 5660

County Road 1005, 0037 Peak One Drive

Frisco, CO 80443

970-668-4070

## Teller

### Teller County Public Health Department

P.O. Box 928

11115 W. Highway 24, Unit 2C

Divide, CO 80814

719-687-6416

### Teller County Environmental Health Department

P.O. Box 928

540 Manor

Woodland Park, CO 80863

719-687-3048

## Washington

### Northeast Colorado Health Department

Serving Logan, Morgan, Phillips, Sedgwick, Washington and Yuma counties

700 Columbine St.

Sterling, CO 80751

970-522-3741

## Weld

### Weld County Department of Public Health and Environment

1555 N. 17th Ave.

Greeley, CO 80631

970-304-6420

## Yuma

### Northeast Colorado Health Department

Serving Logan, Morgan, Phillips, Sedgwick, Washington and Yuma counties

700 Columbine St.

Sterling, CO 80751

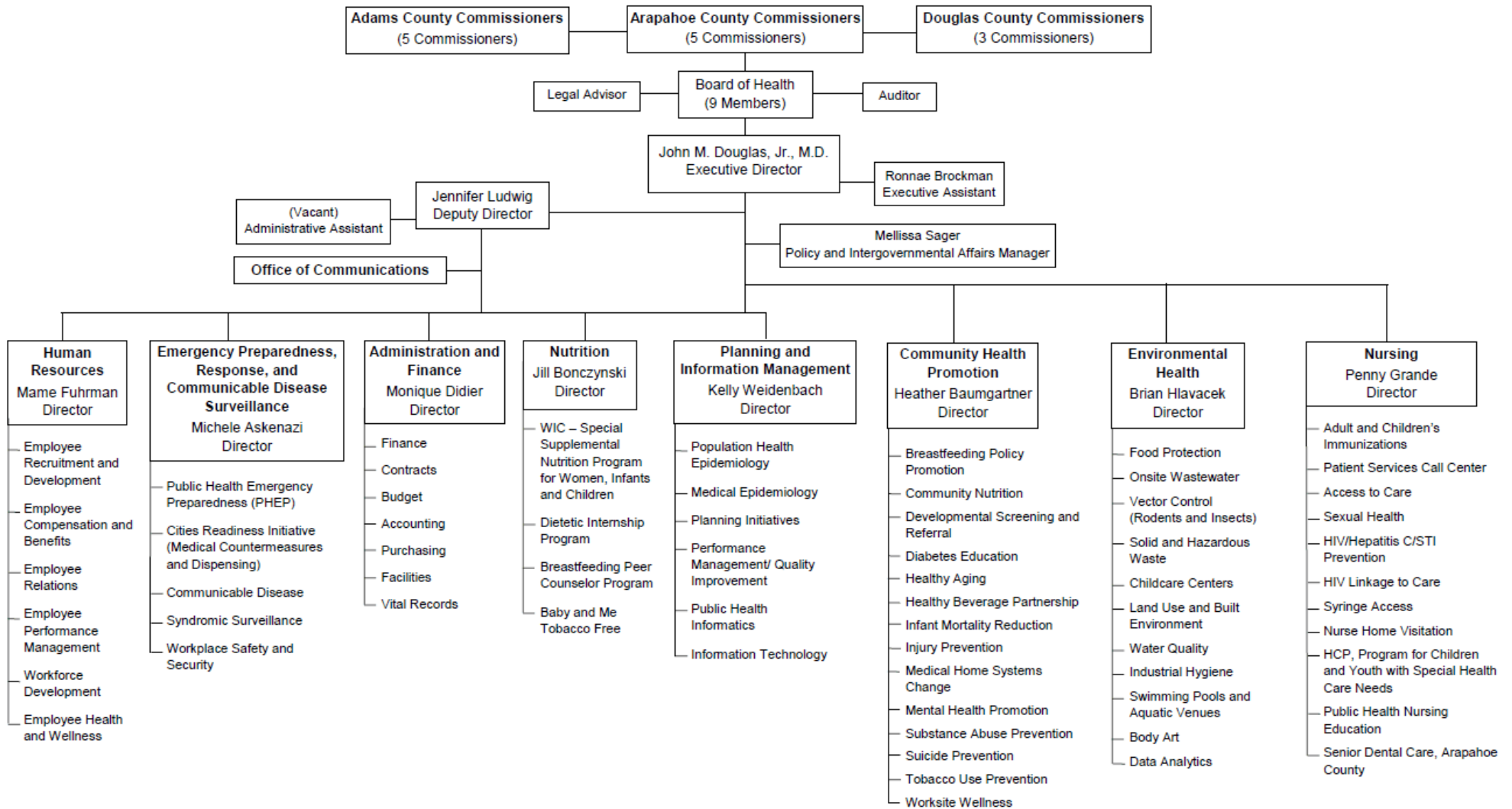
970-522-3741

[Back to top](#)

---



## Tri-County Health Department Organizational Chart



## What is Public Health?

Tri-County Health Department is the largest local health department in Colorado. It is our mission to protect, promote and improve the health, environment and quality of life of the 1.5 million residents of Adams, Arapahoe and Douglas Counties.



Most of the work of public health agencies is population based—that is, it focuses on improving the health of the entire community. We help you to make the healthy choice the easy choice!

## 11 Offices to Serve You

Visit [www.tchd.org](http://www.tchd.org) for directions  
See the list of services on the back page →

### Administration

6162 South Willow Drive, Suite 100  
Greenwood Village, CO 80111 • 303-220-9200  
Services: 1 3 4 5 10 12  
RTD: 48 Arapahoe Station E,F

### Aurora West: Alton/Colfax

9000 E. Colfax Avenue (Wells Fargo Building)  
Aurora, CO 80011 • 303-361-6010  
Services: 10 14  
RTD: 15

### Aurora East: Colfax/Chambers

15400 E. 14th Place (Altura Plaza Building)  
Aurora, CO 80011 • 303-341-9370  
Services: 2 5 6 7 8 9 10 11 12 14  
RTD: 15, 153

### Aurora South: Hampden/Chambers

15192 E. Hampden Ave. (Hampden Villa)  
Aurora, CO 80014 • 303-873-4400  
Services: 10 12 14  
RTD: 133, 153

### Brighton

30 South 20th Ave. Suites F/G  
Brighton, CO 80601 • 303-659-2335  
Services: 10 14

### Castle Rock

410 South Wilcox Street  
Castle Rock, CO 80104 • 303-663-7650  
Services: 1 2 5 6 8 10 14

### Commerce City

4201 E. 72nd Avenue, Unit D  
(Adams County Service Center Building)  
Commerce City, CO 80022 • 303-288-6816  
Services: 1 5 10 12 14  
RTD: 48, 72/72W

### Englewood

4857 S. Broadway  
Englewood, CO 80113 • 303-761-1340  
Services: 2 6 7 8 9 10 12 13 14  
RTD: 0

### Lone Tree

9350 Heritage Hills Circle  
(Douglas County Building)  
Lone Tree, CO 80124 • 303-784-7860  
Services: 6 8 10 14  
RTD: 403 • Lincoln Station E, F

### North Broadway: 70th/Broadway

7000 Broadway #400  
Denver, CO 80221 • 303-426-5232  
Services: 6 9 10 14  
RTD: 6, 72

### Westminster

1401 W. 122nd Ave., #200 (Park Centre)  
Westminster, CO 80234 • 303-452-9547  
Services: 2 6 7 8 9 10 12 14  
RTD: 8, 120

## Key to Services:

*Note: Not all services are offered at each location.*

- 1 Birth and Death Certificates
- 2 Children with Special Needs Referrals
- 3 Disease Control / Epidemiology
- 4 Emergency Preparedness and Response
- 5 Environmental Health Services
- 6 Family Planning / Birth Control/ STI Testing
- 7 HIV/STI/Hepatitis Testing and Counseling
- 8 Immunizations for Children and Adults
- 9 Medicaid Assistance and Outreach
- 10 Nutrition Services / Registered Dietitians
- 11 Occupational Health / Industrial Hygiene
- 12 Prenatal and Parenting Case Management
- 13 Senior Dental / Arapahoe County, Ages 55+
- 14 WIC Nutrition Services

### About the Cover:

L-R, top to bottom: Immunizations; disease control and prevention; handwashing. Prenatal and parenting case management; birth certificates. Restaurant inspections; disease prevention; sanitation. Chronic disease screenings and referrals; tobacco prevention; emergency preparedness and response. Family planning; WIC nutrition services.



[www.tchd.org](http://www.tchd.org)

General Information: 303-220-9200



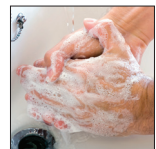
Tri-County Health Department has achieved national public health accreditation—the measurement of health department performance against a set of nationally-recognized, evidenced-based standards.

Many programs have age, residency or income requirements. Some are offered for free or on a sliding-fee scale. Not all services are offered at each location. Tri-County Health Department values and welcomes people of all ages; ethnicities; genders and gender identities/expressions; sexual orientations; languages spoken; nationalities and cultures; physical, mental and developmental abilities; races; religions; and, socio-economic, insurance and immigration status. Printed on recycled paper.

Revised 12/2018

# Tri-County Health Department

Public Health Services for the Residents of  
Adams, Arapahoe and Douglas Counties





## Birth and Death Certificates



*Certified birth certificates are needed for work, passport applications and many school programs*

- Birth certificates are available for people born in any county in Colorado
- Death certificates are issued for deaths that occurred in any county in Colorado
- Call 720-200-1401 for information and fees, or order online at [www.tchd.org](http://www.tchd.org)

## Nutrition Services

*Our nutrition programs promote good food and activity choices for healthy living*

### WIC – Women, Infants and Children

The supplemental nutrition program provides nutritious foods, education and referrals for income-eligible women who are pregnant or breastfeeding, and their children up to age five



### Nutrition Education

Registered Dietitians are available for nutrition presentations:

- Community organizations
- Child care staff
- Schools and health fairs
- Breastfeeding support

## Health Promotion

- Obesity prevention
- Older adult fall prevention
- HIV/STI/Hepatitis testing
- Chronic disease screenings
- Injury prevention
- Worksite wellness
- Mental health
- Tobacco prevention/cessation
- Substance abuse prevention



## Health Services

*Our services focus on promoting good health for children and adults through clinical, preventive and health education programs*

### Children's Health



- Children's immunizations 303-451-0123
- Medicaid and Child Health Plan Plus (CHP+) benefit questions 303-873-4404
- Health care referrals
- Resources for children with special healthcare needs 303-783-7139

### Expectant and New Mothers

- Referrals to prenatal care and other support services
- Nurse Family Partnership 303-255-6246
- Breastfeeding education and support
- Parenting education
- Medicaid and Child Health Plan Plus benefit questions 303-873-4404



### Health Care Services



- Immunizations for uninsured, Medicaid, CHP+, and most private insurance 303-451-0123
- Pregnancy testing 303-363-3018
- Birth control 303-363-3018
- HIV/STI/Hepatitis testing 303-363-3018
- Syringe access and harm reduction
- Tuberculosis (TB) screening 303-451-0123
- Dental care for Arapahoe County residents age 55 and older 303-783-7106

## Environmental Health

*Our environmental health programs focus on preventing communicable disease and environmental conditions that could be harmful to your health*

### Food Safety and Education



- Inspections of almost 5,000 restaurants and food service facilities
- Inspection results available online at [www.tchd.org](http://www.tchd.org)
- Food safety training classes

### Health, Education and Inspections

- Child care center inspections
- Swimming pool and spa inspections
- Occupational Health/Industrial Hygiene
- Oversight of meth lab cleanup
- Body art facility inspections
- Consumer health information
- Mosquito and rodent surveillance



### Land Use and Water Quality

- Household chemical roundups
- Land use and built environment planning
- Solid and hazardous waste disposal site monitoring and spill response
- Rocky Mountain Arsenal and Lowry Landfill cleanup monitoring
- Septic system permits and inspections
- Water quality outreach and education



## Disease Control and Prevention

*Tri-County Health Department helps prevent infectious diseases that can be spread from animals, through food/water, and by person-to-person contact*



- Chronic and infectious disease surveillance
- Outbreak response
- Infectious disease investigation and control
- Community health data
- To report diseases, call 303-220-9200



## Emergency Preparedness and Response

*We participate in all levels of emergency preparedness planning, training and response; and coordinate with other local, state and federal operations*



- Manage and dispense medications and supplies during public health emergencies
- Rapidly communicate with a large network of hospitals, physicians, schools and emergency response agencies

## Health Communication

Website • Twitter • Facebook • Pinterest • Instagram

[www.tchd.org](http://www.tchd.org)