

CASTLE ROCK WATER

**UPDATE:**  
**CHATFIELD RESERVOIR REALLOCATION PROJECT**

JULY 7, 2020



# CHATFIELD

## BACKGROUND

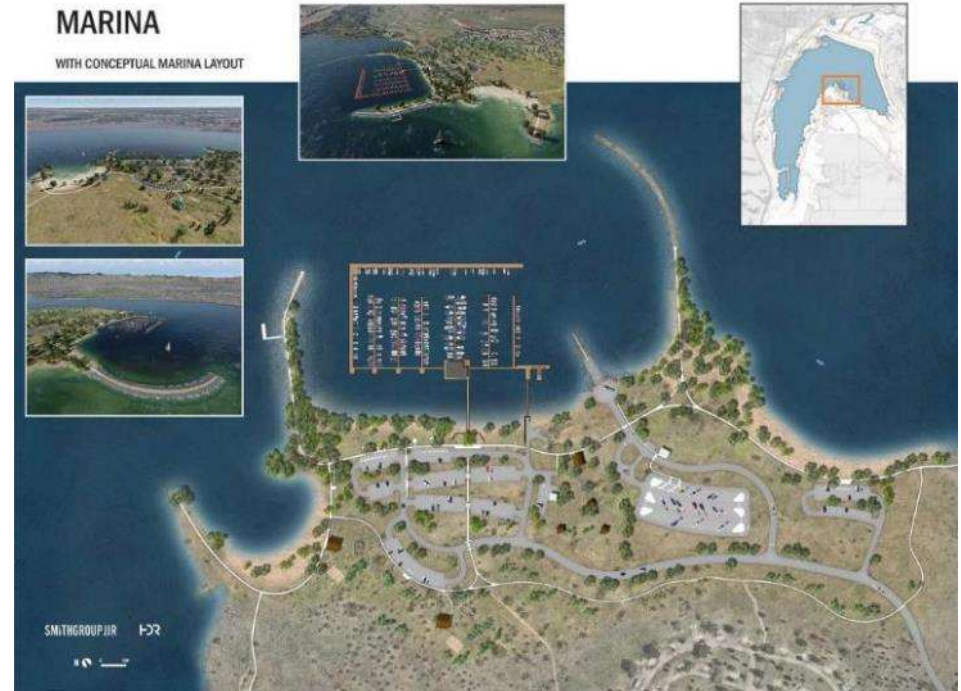
- Project: Reallocate 20,600 Acre Feet (AF) for Storage
- Castle Rock Participation:
  - Approved by Town Council June 17, 2014
  - Modified CWCB Agreement approved Nov. 9, 2018
  - Agreement provides 20 year no interest loan
  - 2,000 acre-feet (AF) ultimate total storage
  - Currently 590 AF of storage space
  - Modified Option Agreement has 1,410 AF remaining
- Town's Planned Investment: \$16.6 million (\$8,301/AF)
- Town's Current Investment: \$4.9 million



# CHATFIELD

## CURRENT STATUS

- Construction Activities Complete
- Project 2.3% under budget
  - \$167 million vs. \$171 million
- Castle Rock has stored approximately 175 AF to date
- Cost savings allocated to required operation & monitoring activities
- Studying additional infrastructure for pumping and transmission of water



# CHATFIELD

## BENEFITS

Statewide project support and Front Range water provider cooperation

### Storage

- Ability to capture free river flows
- Capacity in basins where water rights reside
- Utilization of existing water storage rights
- Future increase of storage value

### Potential Opportunities

- Lease storage at attractive prices
- Infrastructure partnerships
- Expanded utilization of Ravenna pipeline

### Flexibility

- Use and trades of imported supplies
- Purchase of spot water from Denver and Aurora
- Exchanges with Rueter-Hess Reservoir



North Boat Ramp area at Chatfield Reservoir

# CHATFIELD

## BUDGET & SCHEDULE

- 2021 CRMC Assessments (~\$35,000)
- 2022 Option Purchase (\$1,070,825)
- Ownership of Full Storage Capacity  
**2,000 acre feet in 2034**

### Planned Investments in Chatfield Reservoir Reallocation Project and Other Related Projects

Expenditure Category	2021 - 2025	2026 - 2030	2031 - 2035	Totals
Chatfield Storage	\$2,150,000	\$5,487,979	\$4,313,807	\$11,951,786
Chatfield – West Side Alternative Infrastructure	\$8,100,000	\$6,400,000	\$16,800,000	\$31,300,000
Chatfield Reservoir Management Company Annual Assessments	\$372,400	\$617,500	\$925,300	\$1,915,200
Chatfield Reallocation OMRRR&R	\$600,000	\$600,000	\$600,000	\$1,800,000
<b>Totals =</b>	<b>\$11,222,400</b>	<b>\$13,105,479</b>	<b>\$22,639,107</b>	<b>\$46,966,986</b>



# THANK YOU