

Yearly Sales Tax Revenue



	2015	2016	2017	2018	2019	2020
Prior Year Collections *	\$ 231,220	\$ 166,999	\$ 175,216	\$ 82,847	\$ 129,200	\$ 102,690
Jan	2,529,828	2,708,833	2,939,153	3,303,966	3,442,636	3,765,880
Feb	2,356,187	2,628,882	2,942,236	3,044,888	3,355,803	3,591,341
Mar	3,249,291	3,274,629	3,856,165	4,103,325	4,351,558	4,247,423
Apr	2,697,616	2,991,981	3,559,192	3,487,035	3,914,923	-
May	3,089,557	3,235,763	3,703,943	4,043,517	4,188,824	-
Jun	3,607,345	3,836,672	4,304,723	4,493,392	5,016,543	-
Jul	3,307,172	3,547,768	3,899,703	4,080,724	4,450,398	-
Aug	3,336,810	3,551,913	3,898,049	4,266,934	5,343,376	-
Sep	3,513,438	3,946,825	4,190,106	4,319,640	4,841,430	-
Oct	2,999,064	3,528,073	3,513,275	3,984,307	4,011,594	-
Nov	3,055,060	3,479,493	3,877,471	4,104,407	4,321,399	-
Dec	4,367,857	4,855,770	5,426,023	5,562,531	6,055,018	-
Totals	\$ 38,340,444	\$ 41,753,601	\$ 46,285,255	\$ 48,877,513	\$ 53,422,702	\$ 11,604,644

Year to Year Change

8.9%

10.9%

5.6%

9.3%

Footnote:

* Prior Year Collections line item includes payments received in current year applicable to prior year sales tax returns. As prior year accounting records have been closed and the "previous period" amount is not deemed material to the previous year YTD total, the revenue will be recorded in December of the current year. Prior year monthly and annual totals will not change due to a receipt of a late payment.


Three Year Sales Tax Revenue Comparison



	2018	2019	2018-2019 % Change	2020	2019-2020 % Change
<i>Previous Period *</i>	\$ 82,847	\$ 129,200	NA	\$ 102,690	NA
<i>Jan</i>	\$ 3,303,966	3,442,636	4.2%	3,765,880	9.4%
<i>Feb</i>	\$ 3,044,888	\$ 3,355,803	10.2%	3,591,341	7.0%
<i>Mar</i>	\$ 4,103,325	4,351,558	6.0%	4,247,423	-2.4%
<i>Apr</i>	\$ 3,487,035	\$ 3,914,923	12.3%		
<i>May</i>	\$ 4,043,517	4,188,824	3.6%		
<i>Jun</i>	\$ 4,493,392	\$ 5,016,543	11.6%		
<i>Jul</i>	\$ 4,080,724	4,450,398	9.1%		
<i>Aug</i>	\$ 4,266,934	\$ 5,343,376	25.2%		
<i>Sep</i>	\$ 4,319,640	4,841,430	12.1%		
<i>Oct</i>	\$ 3,984,307	\$ 4,011,594	0.7%		
<i>Nov</i>	\$ 4,104,407	4,321,399	5.3%		
<i>Dec</i>	\$ 5,562,531	\$ 6,055,018	8.9%		
Totals	\$ 48,794,666	\$ 53,293,502	9.2%	\$ 11,604,644	
Revenue	\$ 10,452,179	\$ 11,149,997	6.7%	\$ 11,604,644	4.1%
Less Audit Revenue YTD	7,858	327,023	4061.8%	374,385	14.5%
Less Promenade Credit PIF YTD	234,249	304,262	29.9%	344,047	13.1%
Less DDA TIF* YTD	112,897	186,637	65.3%	112,944	-39.5%
Revenue Net of Audit Rev, Promenade, and DDA TIF	\$ 10,097,175	\$ 10,332,074	2.3%	\$ 10,773,269	4.3%
* DDA TIF number includes current year TIF and any prior year corrections/adjustments.					

Monthly Sales Tax Comparisons

March 2019	March 2020	% Prior Month/Year Comparison
\$ 4,392,870	\$ 4,243,408	-3.4%
2019	2020	% Change YTD
\$ 11,263,287	\$ 11,597,651	3.0%



Monthly Sales Tax Comparisons - By Geographical Area

Category	March 2019	March 2020	% Prior Month/Year Comparison	% Total Month
Milestone/Metzler	\$ 894,492	\$ 929,290	3.9%	22.1%
Promenade	663,177	766,750	15.6%	18.3%
Outlet Mall	594,564	216,091	-63.7%	5.1%
Out of State	454,429	571,342	25.7%	13.6%
Out of Town	415,068	507,099	22.2%	12.1%
Downtown	369,428	335,488	-9.2%	8.0%
Wolfensberger	226,191	225,982	-0.1%	5.4%
Area Around Outlet Mall	137,519	138,196	0.5%	3.3%
Founders Market Place	132,954	194,953	46.6%	4.6%
Audit Revenue	208,580	77,539	-62.8%	1.8%
Plum Creek	84,638	60,239	-28.8%	1.4%
Justice	81,993	86,222	5.2%	2.1%
Misc/ Other	55,043	47,937	-12.9%	1.1%
Meadows	54,921	42,429	-22.7%	1.0%
Remote Seller	19,873	43,851	120.7%	1.0%
Category	2019 YTD	2020 YTD	% Change YTD	% Total YTD
Milestone/Metzler	\$ 2,443,144	\$ 2,495,336	2.1%	21.7%
Promenade	1,850,974	2,086,456	12.7%	18.1%
Outlet Mall	1,388,059	978,606	-29.5%	8.5%
Out of State	1,193,810	1,343,875	12.6%	11.7%
Out of Town	984,054	1,132,098	15.0%	9.8%
Downtown	959,459	949,597	-1.0%	8.2%
Wolfensberger	612,960	631,403	3.0%	5.5%
Area Around Outlet Mall	346,109	343,334	-0.8%	3.0%
Founders Market Place	400,125	492,078	23.0%	4.3%
Audit Revenue	327,023	374,385	14.5%	3.3%
Plum Creek	234,377	229,078	-2.3%	2.0%
Justice	219,097	225,281	2.8%	2.0%
Misc/ Other	118,714	106,228	-10.5%	0.9%
Meadows	145,797	127,029	-12.9%	1.1%
Remote Seller	39,585	82,867	109.3%	0.7%

Sales Tax Districts

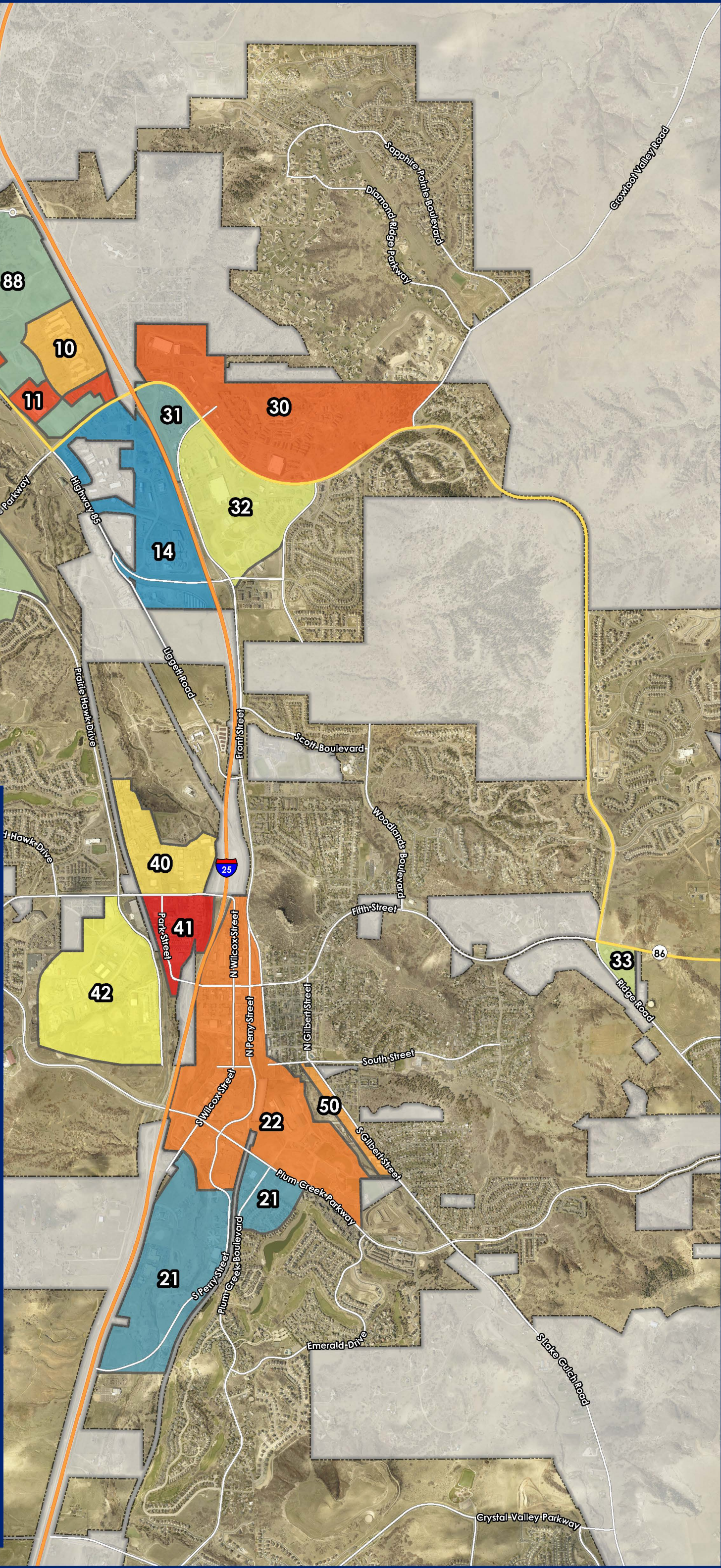
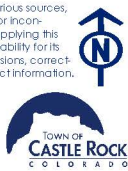
Town of Castle Rock

Legend


- 10, Outlets at Castle Rock
- 11, Area Around Outlet Mall
- 12, Meadows
- 14, Justice
- 21, Plum Creek
- 22, Downtown
- 30, I-25 Founders SE
- 31, S Founders Pkwy
- 32, Milestone
- 33, Founders Marketplace
- 40, Malibu
- 41, Kinner
- 42, Atchison
- 50, Gilbert
- 88, Promenade

0 0.25 0.5 1
Miles

Disclaimer: The data presented has been compiled from various sources, each of which introduces varying degrees of inaccuracies or inconsistencies. Such discrepancies in data are inherent and in supplying this product to the public the Town of Castle Rock assumes no liability for its use or accuracy. For questions or comments regarding omissions, corrections, or updates please visit CRgov.com/directory for contact information.
Copyright 2017, Town of Castle Rock
Coordinate System: SPCS Colorado Central (0502)
Projection: Lambert Conformal Conic
Datum: North American 1983
Units: Foot US
Creation Date: 5/5/2017



Monthly Sales Tax Comparisons

March 2019	March 2020	% Prior Month/Year Comparison		
\$ 4,392,870	\$ 4,243,408	-3.4%		
2019	2020	% Change YTD		
\$ 11,263,287	\$ 11,597,652	3.0%		
Monthly Sales Tax Comparisons - By Industry				
Category	March 2019	March 2020	% Prior Month/Year Comparison	% Total Month
Food and General Merchandise	\$ 1,117,028	\$ 1,533,926	37.3%	36.1%
Apparel and Accessories	658,402	260,072	-60.5%	6.1%
Restaurants & Bars	547,861	358,889	-34.5%	8.5%
Misc Retail	456,194	575,341	26.1%	13.6%
Home and Garden	253,138	292,350	15.5%	6.9%
Utilities	214,437	191,656	-10.6%	4.5%
Auto and Auto Items	197,211	144,327	-26.8%	3.4%
Communication	124,075	107,849	-13.1%	2.5%
Furniture and Home Décor	123,733	122,679	-0.9%	2.9%
Audit Revenue	208,580	77,539	-62.8%	1.8%
Leasing and Rentals	140,361	120,060	-14.5%	2.8%
Agricultural and Construction	102,529	140,029	36.6%	3.3%
Services	108,529	139,339	28.4%	3.3%
Wholesale and Manufacturing	59,136	72,670	22.9%	1.7%
Ranch Supply/Pet Needs	52,689	87,137	65.4%	2.1%
Hotel	28,967	19,545	-32.5%	0.5%
Category	2019 YTD	2020 YTD	% Change YTD	% Total YTD
Food and General Merchandise	\$ 3,201,092	\$ 3,786,146	18.3%	32.6%
Apparel and Accessories	1,517,375	1,113,490	-26.6%	9.6%
Restaurants & Bars	1,415,665	1,228,004	-13.3%	10.6%
Misc Retail	1,171,933	1,397,040	19.2%	12.0%
Home and Garden	699,333	737,281	5.4%	6.4%
Utilities	665,342	635,969	-4.4%	5.5%
Auto and Auto Items	523,611	508,545	-2.9%	4.4%
Communication	358,205	236,570	-34.0%	2.0%
Furniture and Home Décor	315,027	349,968	11.1%	3.0%
Audit Revenue	327,023	374,385	14.5%	3.2%
Leasing and Rentals	286,882	306,275	6.8%	2.6%
Agricultural and Construction	265,416	295,327	11.3%	2.5%
Services	176,545	230,921	30.8%	2.0%
Wholesale and Manufacturing	135,881	130,831	-3.7%	1.1%
Ranch Supply/Pet Needs	133,629	205,352	53.7%	1.8%
Hotel	70,328	61,548	-12.5%	0.5%
* YTD break out does not include prior year collections				