

Yearly Sales Tax Revenue



	2014	2015	2016	2017	2018	2019
Prior Year Collections *	\$ 119,928	\$ 231,220	\$ 166,999	\$ 175,216	\$ 82,847	\$ 129,200
Jan	2,336,654	2,529,828	2,708,833	2,939,153	3,303,966	3,442,636
Feb	2,246,138	2,356,187	2,628,882	2,942,236	3,044,888	3,355,803
Mar	3,033,526	3,249,291	3,274,629	3,856,165	4,103,325	4,351,558
Apr	2,595,907	2,697,616	2,991,981	3,559,192	3,487,035	3,914,923
May	2,843,580	3,089,557	3,235,763	3,703,943	4,043,517	4,188,824
Jun	3,295,338	3,607,345	3,836,672	4,304,723	4,493,392	5,016,543
Jul	2,905,715	3,307,172	3,547,768	3,899,703	4,080,724	4,450,398
Aug	3,041,373	3,336,810	3,551,913	3,898,049	4,266,934	5,343,376
Sep	3,215,915	3,513,438	3,946,825	4,190,106	4,319,640	4,841,430
Oct	2,757,974	2,999,064	3,528,073	3,513,275	3,984,307	4,011,594
Nov	2,951,578	3,055,060	3,479,493	3,877,471	4,104,407	4,321,399
Dec	4,113,480	4,367,857	4,855,770	5,426,023	5,562,531	6,055,018
Totals	\$ 35,457,107	\$ 38,340,444	\$ 41,753,601	\$ 46,285,255	\$ 48,877,513	\$ 53,422,702

Year to Year Change

8.1%

8.9%

10.9%

5.6%

9.3%

Footnote:

* Prior Year Collections line item includes payments received in current year applicable to prior year sales tax returns. As prior year accounting records have been closed and the "previous period" amount is not deemed material to the previous year YTD total, the revenue will be recorded in December of the current year. Prior year monthly and annual totals will not change due to a receipt of a late payment.

Three Year Sales Tax Revenue Comparison



	2017	2018	2017-2018 % Change	2019	2018-2019 % Change
<i>Previous Period *</i>	\$ 175,216	\$ 82,847	NA	\$ 129,200	NA
<i>Jan</i>	\$ 2,939,153	\$ 3,303,966	12.4%	\$ 3,442,636	4.2%
<i>Feb</i>	\$ 2,942,236	\$ 3,044,888	3.5%	\$ 3,355,803	10.2%
<i>Mar</i>	\$ 3,856,165	\$ 4,103,325	6.4%	\$ 4,351,558	6.0%
<i>Apr</i>	\$ 3,559,192	\$ 3,487,035	-2.0%	\$ 3,914,923	12.3%
<i>May</i>	\$ 3,703,943	\$ 4,043,517	9.2%	\$ 4,188,824	3.6%
<i>Jun</i>	\$ 4,304,723	\$ 4,493,392	4.4%	\$ 5,016,543	11.6%
<i>Jul</i>	\$ 3,899,703	\$ 4,080,724	4.6%	\$ 4,450,398	9.1%
<i>Aug</i>	\$ 3,898,049	\$ 4,266,934	9.5%	\$ 5,343,376	25.2%
<i>Sep</i>	\$ 4,190,106	\$ 4,319,640	3.1%	\$ 4,841,430	12.1%
<i>Oct</i>	\$ 3,513,275	\$ 3,984,307	13.4%	\$ 4,011,594	0.7%
<i>Nov</i>	\$ 3,877,471	\$ 4,104,407	5.9%	\$ 4,321,399	5.3%
<i>Dec</i>	\$ 5,426,023	\$ 5,562,531	2.5%	\$ 6,055,018	8.9%
Totals	\$ 46,110,039	\$ 48,794,666	5.8%	\$ 53,293,502	9.2%
Revenue	\$ 46,285,255	\$ 48,877,513	5.6%	\$ 53,422,702	9.3%
Less Audit Revenue YTD	658,386	482,950	-26.6%	1,391,788	188.2%
Less Promenade Credit PIF YTD	928,390	1,180,483	27.2%	1,449,366	22.8%
Less DDA TIF* YTD	1,075,790	964,330	-10.4%	1,061,110	10.0%
Revenue Net of Audit Rev, Promenade, and DDA TIF	\$ 43,622,690	\$ 46,249,749	6.0%	\$ 49,520,439	7.1%
* DDA TIF number includes current year TIF and any prior year corrections/adjustments.					

Monthly Sales Tax Comparisons

December 2018	December 2019	% Prior Month/Year Comparison
\$ 5,562,531	\$ 6,055,018	8.9%
2018	2019	% Change YTD
\$ 48,794,666	\$ 53,293,502	9.2%



Monthly Sales Tax Comparisons - By Geographical Area

Category	December 2018	December 2019	% Prior Month/Year Comparison	% Total Month
Milestone/Metzler	\$ 1,097,411	\$ 1,142,203	4.1%	18.9%
Promenade	1,064,345	1,121,141	5.3%	18.5%
Outlet Mall	927,575	900,914	-2.9%	14.9%
Out of State	628,884	857,488	36.4%	14.2%
Out of Town	629,934	605,705	-3.8%	10.0%
Downtown	395,883	427,228	7.9%	7.1%
Wolfensberger	134,555	228,426	69.8%	3.8%
Area Around Outlet Mall	125,326	146,469	16.9%	2.4%
Founders Market Place	261,815	291,201	11.2%	4.8%
Audit Revenue	-	-	100.0%	0.0%
Plum Creek	82,140	102,022	24.2%	1.7%
Justice	108,331	103,973	-4.0%	1.7%
Misc/ Other	56,941	67,223	18.1%	1.1%
Meadows	49,391	61,025	23.6%	1.0%
Category	2018 YTD	2019 YTD	% Change YTD	% Total YTD
Milestone/Metzler	\$ 10,927,376	\$ 11,316,275	3.6%	21.2%
Promenade	7,373,392	8,720,162	18.3%	16.4%
Outlet Mall	8,064,001	7,335,693	-9.0%	13.8%
Out of State	4,375,782	5,716,623	30.6%	10.7%
Out of Town	4,850,861	4,882,656	0.7%	9.2%
Downtown	4,262,980	4,411,603	3.5%	8.3%
Wolfensberger	1,638,658	2,395,948	46.2%	4.5%
Area Around Outlet Mall	1,696,662	1,797,356	5.9%	3.4%
Founders Market Place	1,720,773	1,851,927	7.6%	3.5%
Audit Revenue	482,950	1,391,788	188.2%	2.6%
Plum Creek	1,031,071	1,070,376	3.8%	2.0%
Justice	1,209,024	1,146,611	-5.2%	2.2%
Misc/ Other	600,386	582,631	-3.0%	1.1%
Meadows	560,750	673,853	20.2%	1.3%

Sales Tax Districts

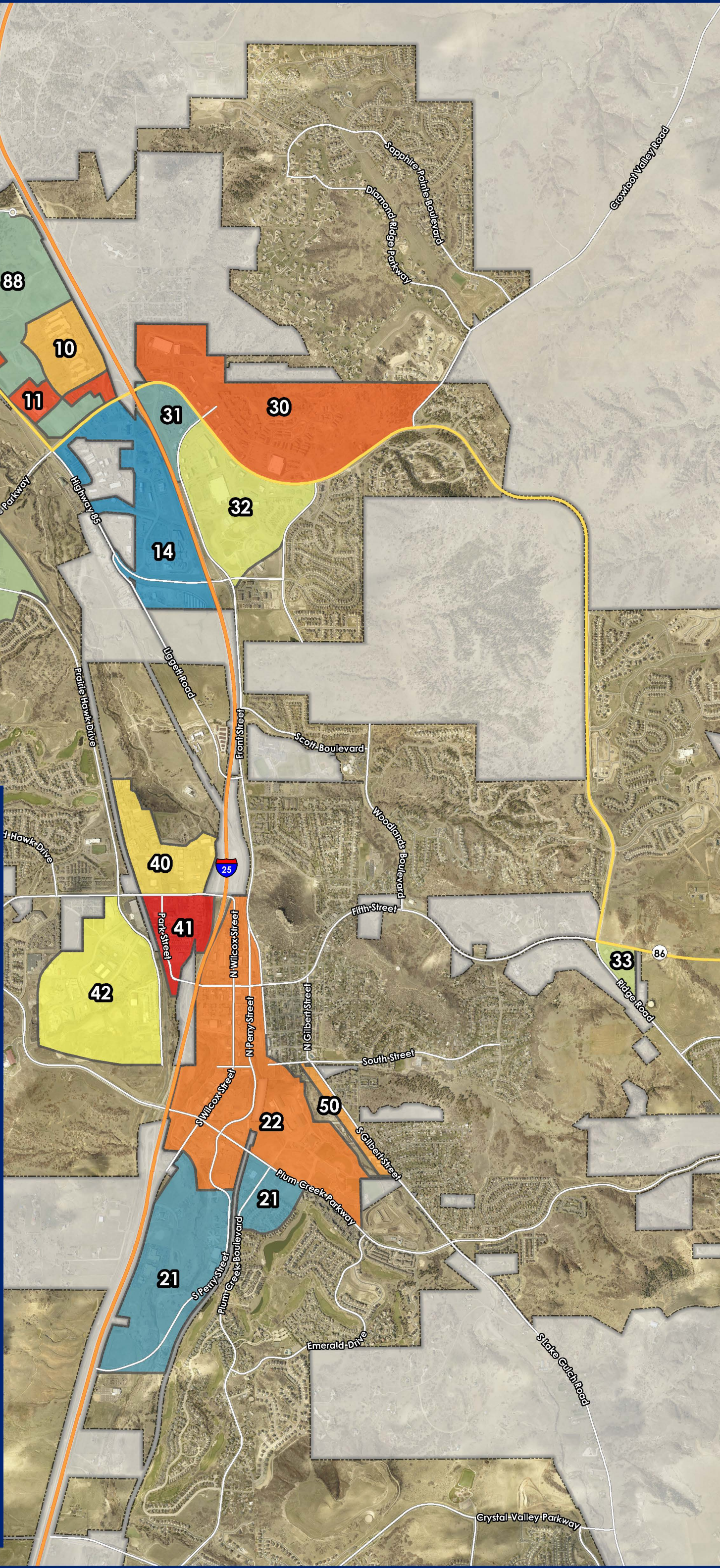
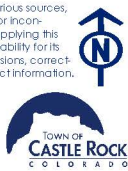
Town of Castle Rock

Legend

- 10, Outlets at Castle Rock
- 11, Area Around Outlet Mall
- 12, Meadows
- 14, Justice
- 21, Plum Creek
- 22, Downtown
- 30, I-25 Founders SE
- 31, S Founders Pkwy
- 32, Milestone
- 33, Founders Marketplace
- 40, Malibu
- 41, Kinner
- 42, Atchison
- 50, Gilbert
- 88, Promenade

0 0.25 0.5 1
Miles

Disclaimer: The data presented has been compiled from various sources, each of which introduces varying degrees of inaccuracies or inconsistencies. Such discrepancies in data are inherent and in supplying this product to the public the Town of Castle Rock assumes no liability for its use or accuracy. For questions or comments regarding omissions, corrections, or updates please visit CRgov.com/directory for contact information.
Copyright 2017, Town of Castle Rock
Coordinate System: SPCS Colorado Central (0502)
Projection: Lambert Conformal Conic
Datum: North American 1983
Units: Foot US
Creation Date: 5/5/2017



Monthly Sales Tax Comparisons

December 2018	December 2019	% Prior Month/Year Comparison
\$ 5,562,531	\$ 6,055,018	8.9%
2018	2019	% Change YTD
\$ 48,794,666	\$ 53,293,502	9.2%



Monthly Sales Tax Comparisons - By Geographical Area

Category	December 2018	December 2019	% Prior Month/Year Comparison	% Total Month
Milestone/Metzler	\$ 1,097,411	\$ 1,142,203	4.1%	18.9%
Promenade	1,064,345	1,121,141	5.3%	18.5%
Outlet Mall	927,575	900,914	-2.9%	14.9%
Out of State	628,884	857,488	36.4%	14.2%
Out of Town	629,934	605,705	-3.8%	10.0%
Downtown	395,883	427,228	7.9%	7.1%
Wolfensberger	134,555	228,426	69.8%	3.8%
Area Around Outlet Mall	125,326	146,469	16.9%	2.4%
Founders Market Place	261,815	291,201	11.2%	4.8%
Audit Revenue	-	-	100.0%	0.0%
Plum Creek	82,140	102,022	24.2%	1.7%
Justice	108,331	103,973	-4.0%	1.7%
Misc/ Other	56,941	67,223	18.1%	1.1%
Meadows	49,391	61,025	23.6%	1.0%
Category	2018 YTD	2019 YTD	% Change YTD	% Total YTD
Milestone/Metzler	\$ 10,927,376	\$ 11,316,275	3.6%	21.2%
Promenade	7,373,392	8,720,162	18.3%	16.4%
Outlet Mall	8,064,001	7,335,693	-9.0%	13.8%
Out of State	4,375,782	5,716,623	30.6%	10.7%
Out of Town	4,850,861	4,882,656	0.7%	9.2%
Downtown	4,262,980	4,411,603	3.5%	8.3%
Wolfensberger	1,638,658	2,395,948	46.2%	4.5%
Area Around Outlet Mall	1,696,662	1,797,356	5.9%	3.4%
Founders Market Place	1,720,773	1,851,927	7.6%	3.5%
Audit Revenue	482,950	1,391,788	188.2%	2.6%
Plum Creek	1,031,071	1,070,376	3.8%	2.0%
Justice	1,209,024	1,146,611	-5.2%	2.2%
Misc/ Other	600,386	582,631	-3.0%	1.1%
Meadows	560,750	673,853	20.2%	1.3%