



# NIGHT WORK ACTIVITIES MAP

Residential Properties Adjacent to Proposed Night Work Activities




ATTACHMENT B



0 145 290 580 Feet

Project: Factory Shops Boulevard



-  300Ft Project Buffer
-  NightWorkActivities
-  Residential Parcels Proposed to Receive Accomodation Offer





# NIGHT WORK ACTIVITIES MAP

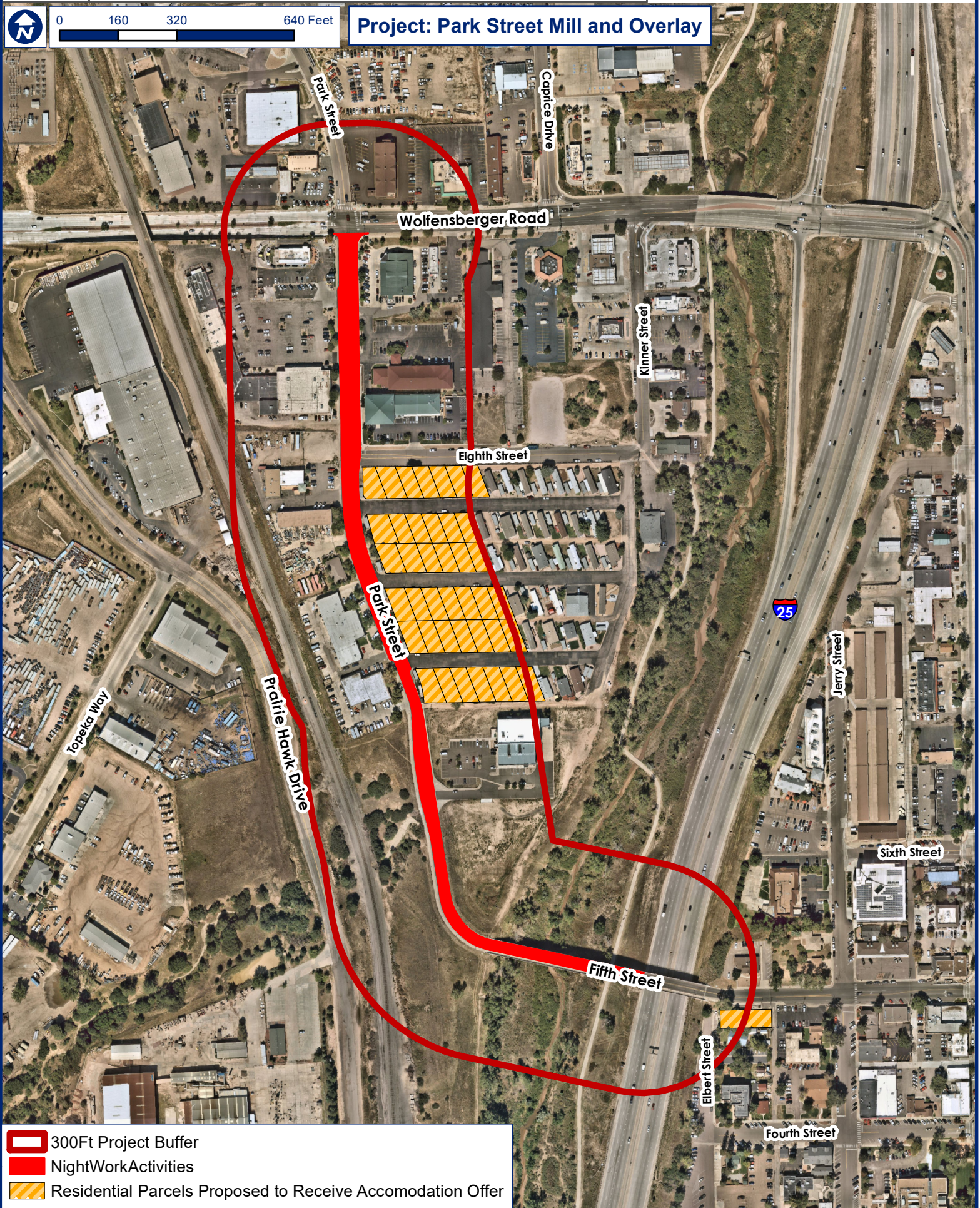
Residential Properties Adjacent to Proposed Night Work Activities

ATTACHMENT B



0 160 320 640 Feet

Project: Park Street Mill and Overlay



- 300Ft Project Buffer
- NightWorkActivities
- Residential Parcels Proposed to Receive Accomodation Offer





# NIGHT WORK ACTIVITIES MAP

Residential Properties Adjacent to Proposed Night Work Activities

## ATTACHMENT B



0 62.5 125 250 Feet

Project: Red Hawk Golf Course Clubhouse Parking Lot (North)



- 300Ft Project Buffer
- NightWorkActivities
- Residential Parcels Proposed to Receive Accomodation Offer





# NIGHT WORK ACTIVITIES MAP

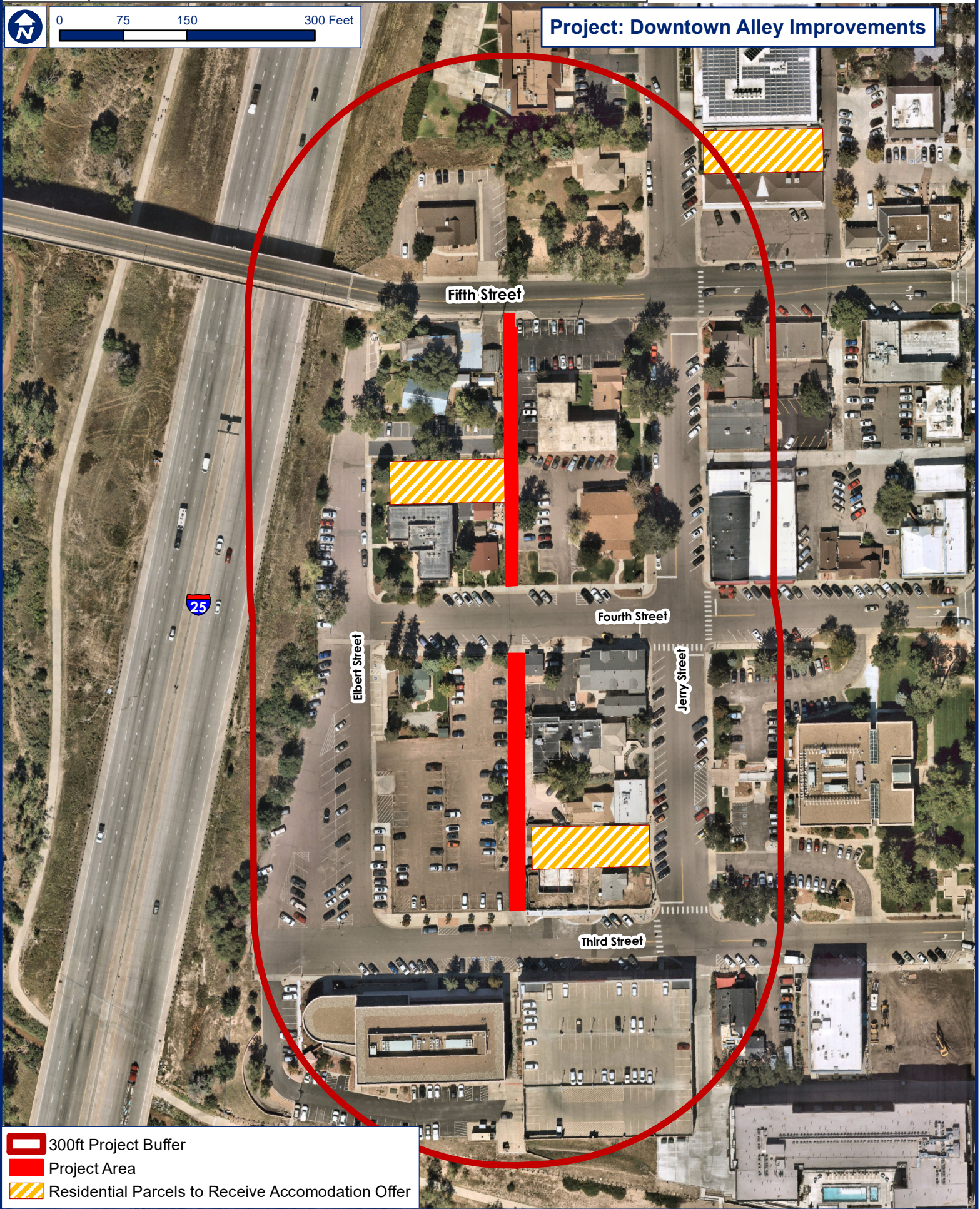
Residential Properties Adjacent to Proposed Night Work Activities

## ATTACHMENT B



0 75 150 300 Feet

Project: Downtown Alley Improvements



- 300ft Project Buffer
- Project Area
- Residential Parcels to Receive Accomodation Offer





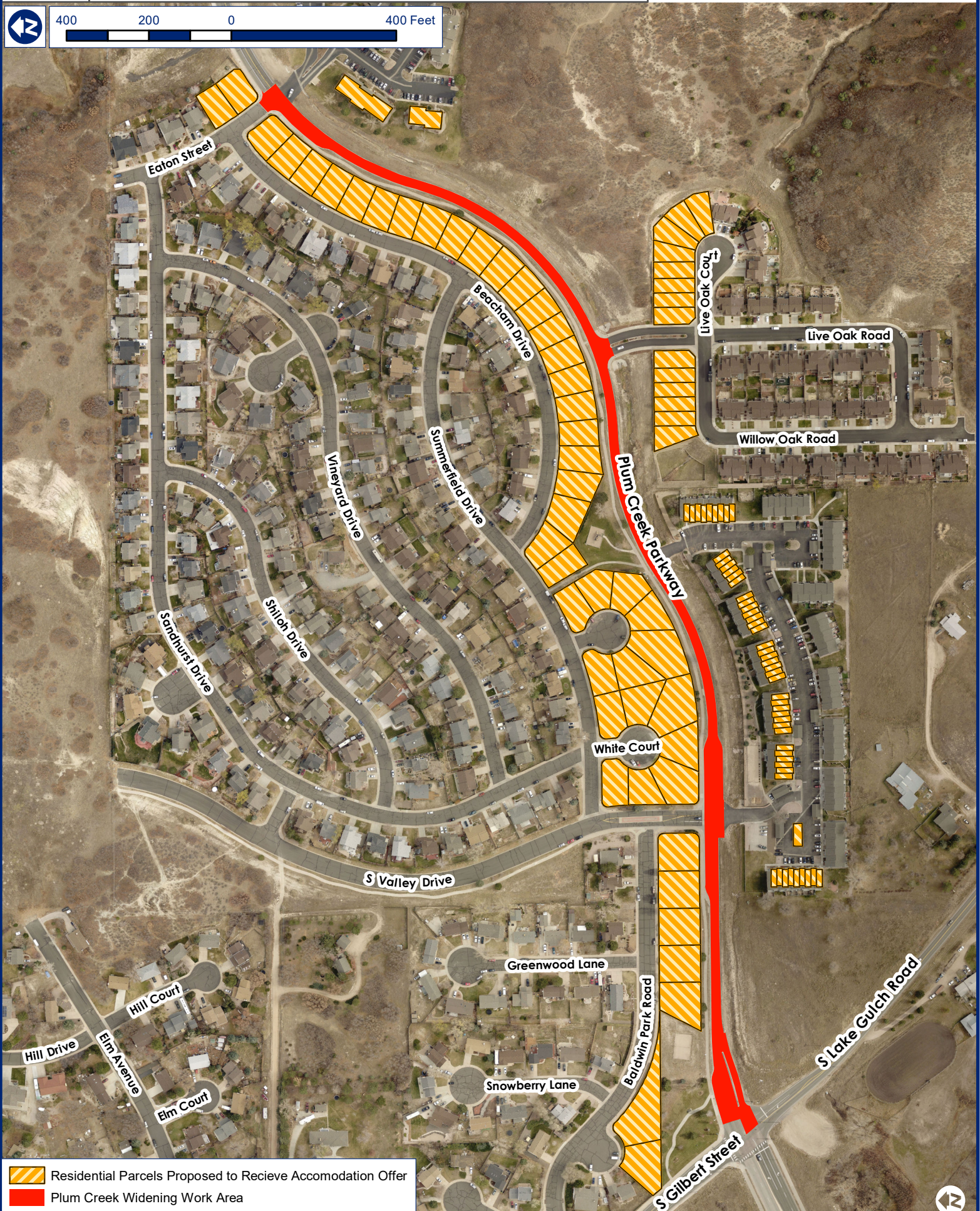
# NIGHT WORK ACTIVITIES MAP

Residential Properties Adjacent to Proposed Night Work Activities

## ATTACHMENT B



400 200 0 400 Feet



Residential Parcels Proposed to Recieve Accomodation Offer



Plum Creek Widening Work Area

