

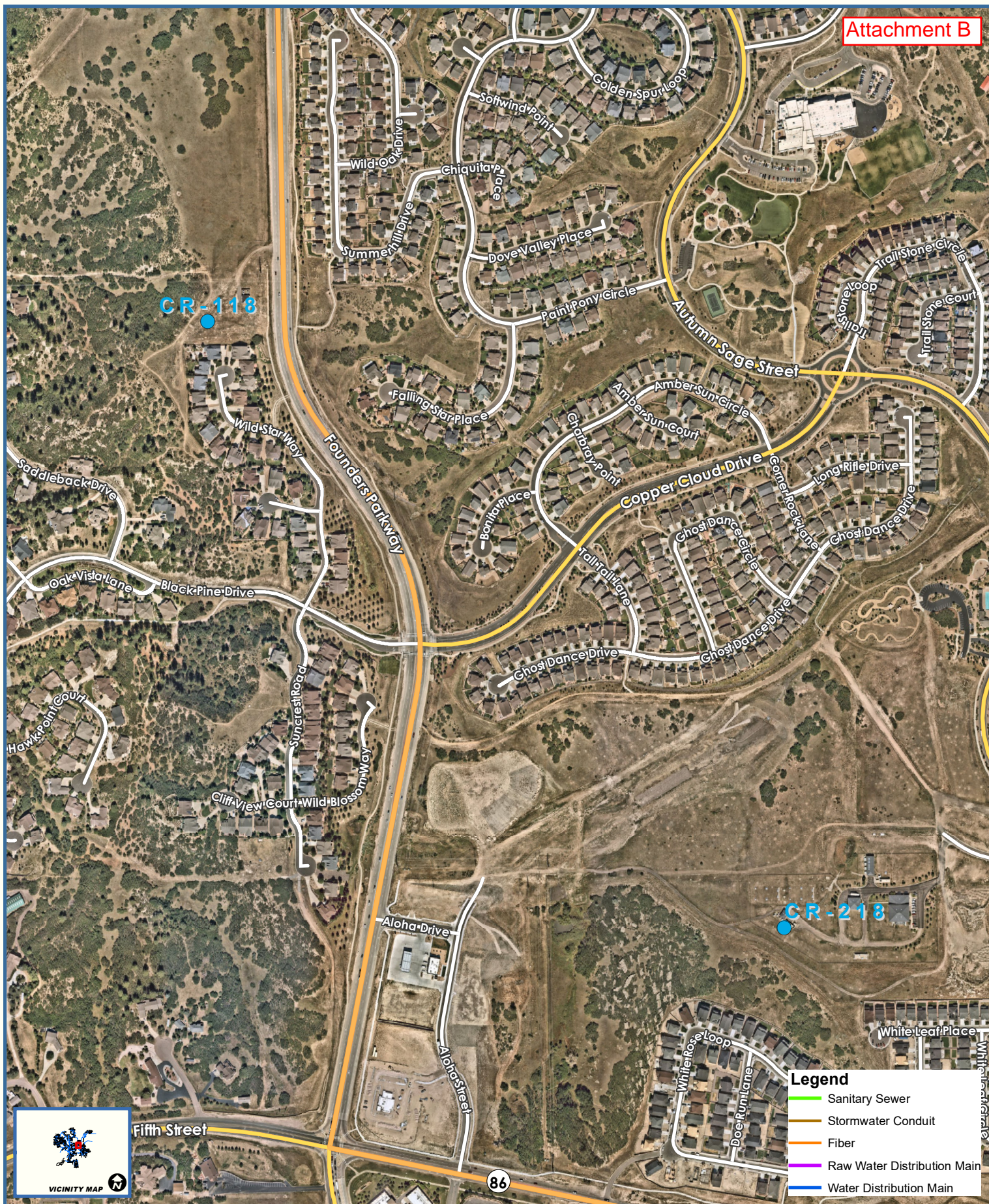


Date: 1/30/2020
 Document Path: J:\B. PLAN & ENG\15.0 WR and Conservation Mgmt\15.1. Water Resources\15.1.9. Projects\Well Rehab Projects\2019 Denver B



Disclaimer: The data presented has been compiled from various sources, each of which introduces varying degrees of inaccuracies or inconsistencies. Such discrepancies in data are inherent and in supplying this product the Town of Castle Rock assumes no liability for its use or accuracy. Questions or comments regarding the cartographic composition of this map including, but not limited to, errors, omissions, corrections, and/or updates, should be directed to the Utilities Department, Town of Castle Rock, (720) 733-6087. Copyright 2019, Town of Castle Rock Utilities Mapping.

**CASTLE ROCK
 UTILITIES MAP
 (INTERNAL USE ONLY)**



- Legend**
- Sanitary Sewer
 - Stormwater Conduit
 - Fiber
 - Raw Water Distribution Main
 - Water Distribution Main



Fifth Street

86



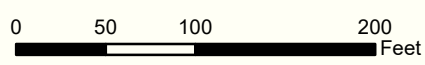
Date: 1/30/2020

1 inch = 537 feet



Disclaimer: The data presented has been compiled from various sources, each of which introduces varying degrees of inaccuracies or inconsistencies. Such discrepancies in data are inherent and in supplying this product the Town of Castle Rock assumes no liability for its use or accuracy. Questions or comments regarding the cartographic composition of this map including, but not limited to, errors, omissions, corrections, and/or updates, should be directed to the Utilities Department, Town of Castle Rock, (720) 733-6087. Copyright 2019, Town of Castle Rock Utilities Mapping.

**CASTLE ROCK
UTILITIES MAP
(INTERNAL USE ONLY)**



Date: 1/30/2020 1 inch = 107 feet



Disclaimer: The data presented has been compiled from various sources, each of which introduces varying degrees of inaccuracies or inconsistencies. Such discrepancies in data are inherent and in supplying this product the Town of Castle Rock assumes no liability for its use or accuracy. Questions or comments regarding the cartographic composition of this map including, but not limited to, errors, omissions, corrections, and/or updates, should be directed to the Utilities Department, Town of Castle Rock, (720) 733-6087. Copyright 2019, Town of Castle Rock Utilities Mapping.

**CASTLE ROCK
UTILITIES MAP
(INTERNAL USE ONLY)**