

# DEVELOPMENT ACTIVITY UPDATE



# Mystic Mountain Distillery



The proposal is for a distillery operation inside the grain mill structure located behind The Barn and Emporium businesses on Perry Street. The goal is to preserve the grain mill exterior as-is and modify the hay storage area to operate the distilling operation.



# Multifamily Project on Front Street



Located on the southeast corner of Front and Third Streets the project combines three properties into one, demolishes the current buildings, and constructs 4 buildings with 26 condominium units with garages.

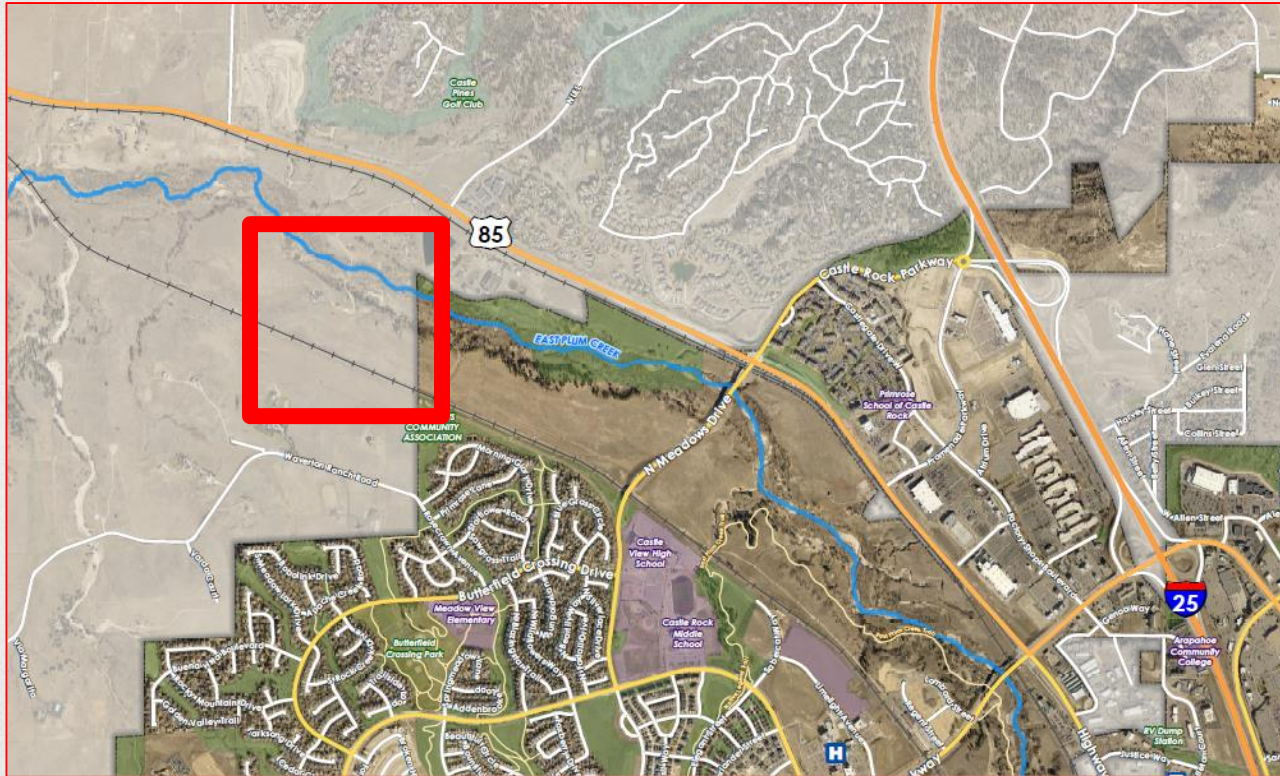
# Mixed Use at 610 Jerry Street



The proposal is for a mixed use building at the north east corner of Sixth and Jerry Streets. The 215,000 sq. ft. building includes approximately 195 residential units, retail space, office space, and approximately 300 parking spaces.



# RV Storage Facility



Fortress Executive is proposing a high end RV equipment storage and maintenance facility on the Joslyn property in Douglas County adjacent to the north boundary of Meadows COI district.

# Alexander Place Annexation



The proposal is for a senior housing “age in place” facility with 26 for lease units, 63 senior living apartments in duplexes, and a 36 bed assisted living facility. We anticipate public hearings in the near future.



# Cooper Hook Office Complex



A two story commercial office complex is proposed in Cooper Hook, located generally at the northeast corner of Alexander Place and Brewer Court. The proposal includes 9 buildings with 45 office condo units.

# Terrain North Basin Residential Development



Located within the Terrain North Basin PD, the proposal includes constructing approximately two miles of Castle Oaks Drive and limiting residential development to less than 200 units.

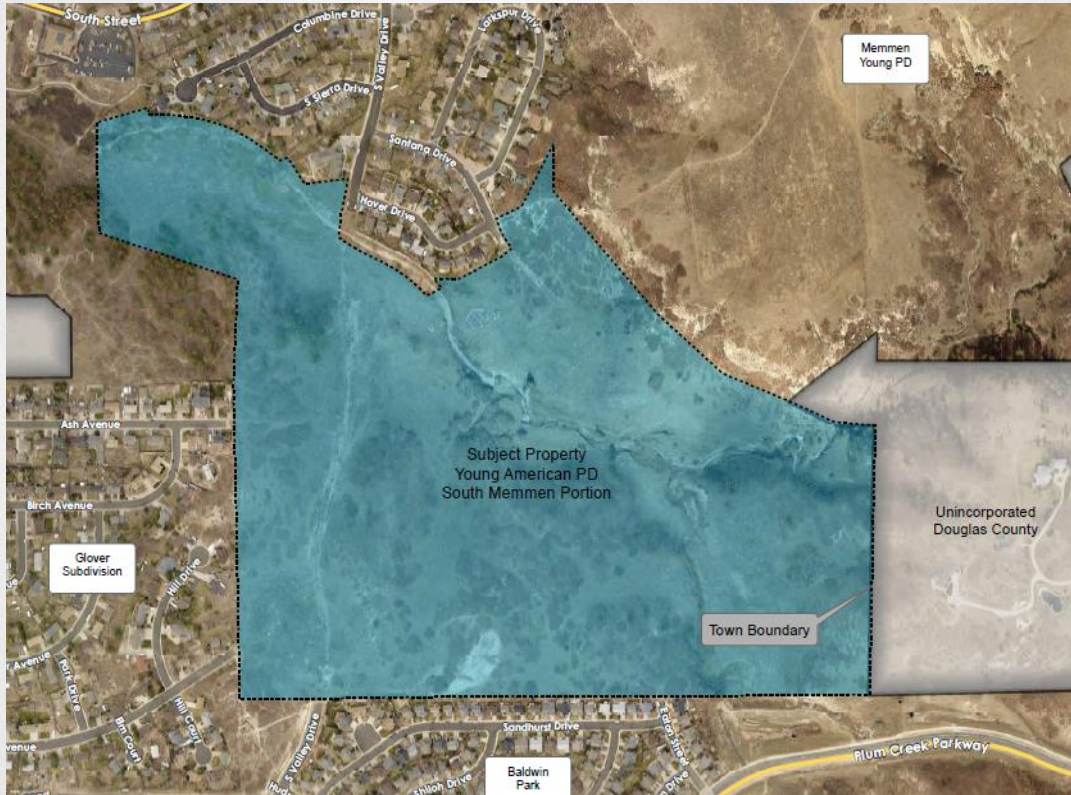


# Paired Home Neighborhood Founders Village



Richmond American Homes is proposing a paired home residential neighborhood located at the northwest corner of Mikelson Blvd. and Mitchell St. The SDP proposes 53 paired homes (totaling 106 dwelling units), garage parking, guest parking and open space.

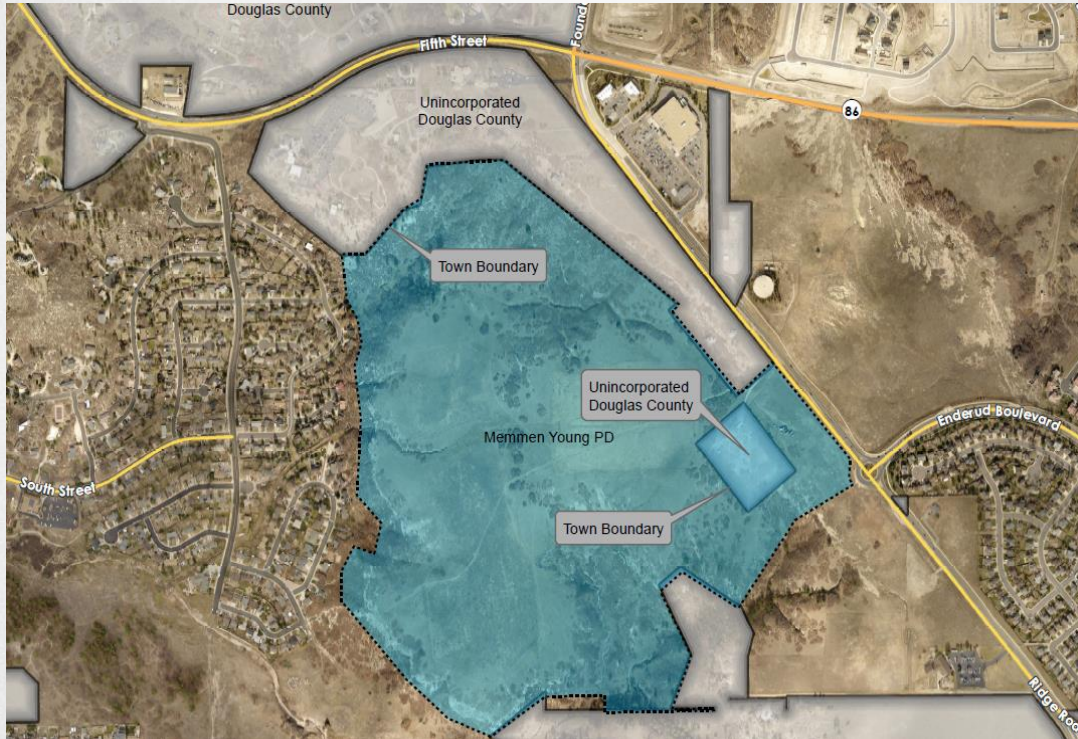
# Young American PD/South Memmen



The proposal is for a mixture of 431 single family detached and townhome units with 45.60 acres of open space. The proposal includes connection of Valley Drive providing access from the north and south, and access from Eaton Street from the south.



# Memmen / Founders Vista



The proposes includes a total of 548 residential units on land currently entitled for 886 residential units. A five acre unincorporated Douglas County enclave property exists in the middle of the development that impacts infrastructure and road alignments.



# Caliber Multifamily Proposal



The existing zoning allows 400 multifamily units and the proposal includes 21 two-story apartment buildings with 226 apartment units.

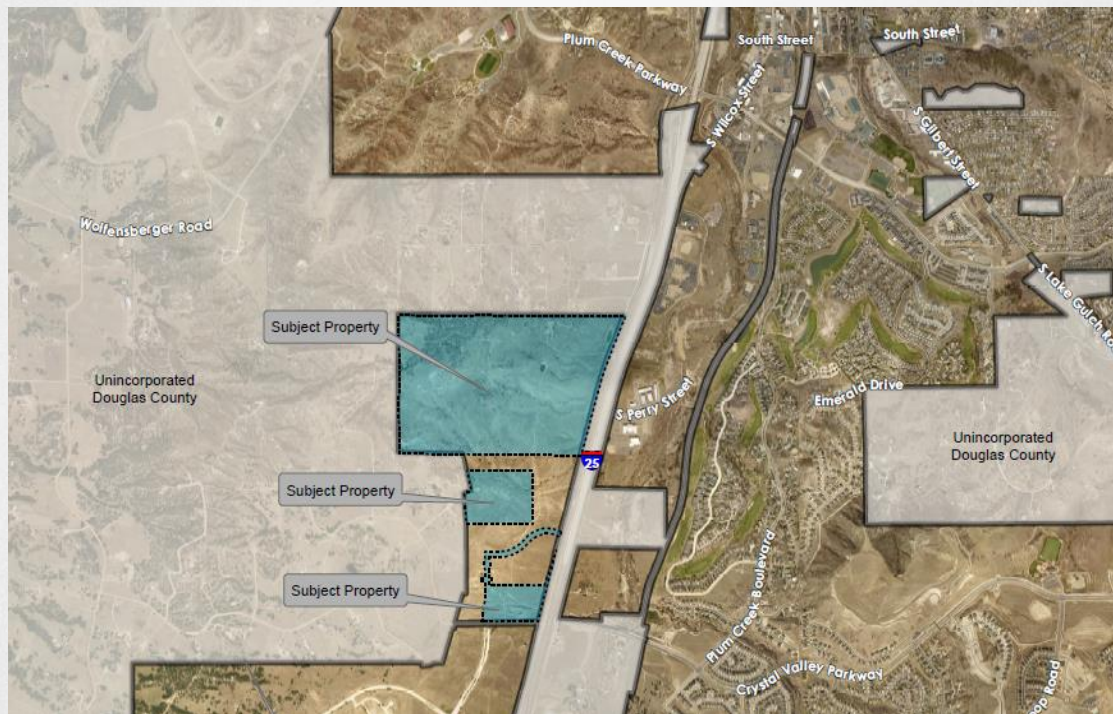


# Brookside Business Center



The business park proposal includes 12 commercial/flex buildings totaling approximately 140,000 sq. ft. The development team is creating a site development plan and they are working with Fish and Wildlife on the mouse habitat boundaries. The final plan is not expected until late 2020.

# Castle Rock Trade Center Zoning



The proposal is for an Interchange Overlay Zone within a 300 acre development on the west side of I-25 and north of Territorial Road, adjacent to Dawson Ridge.



