

CASTLE ROCK WATER

RESOLUTION 2020 – 008 SERVICES AGREEMENT FOR EAST PLUM CREEK REACH 5 PHASE II STABILIZATION PROJECT

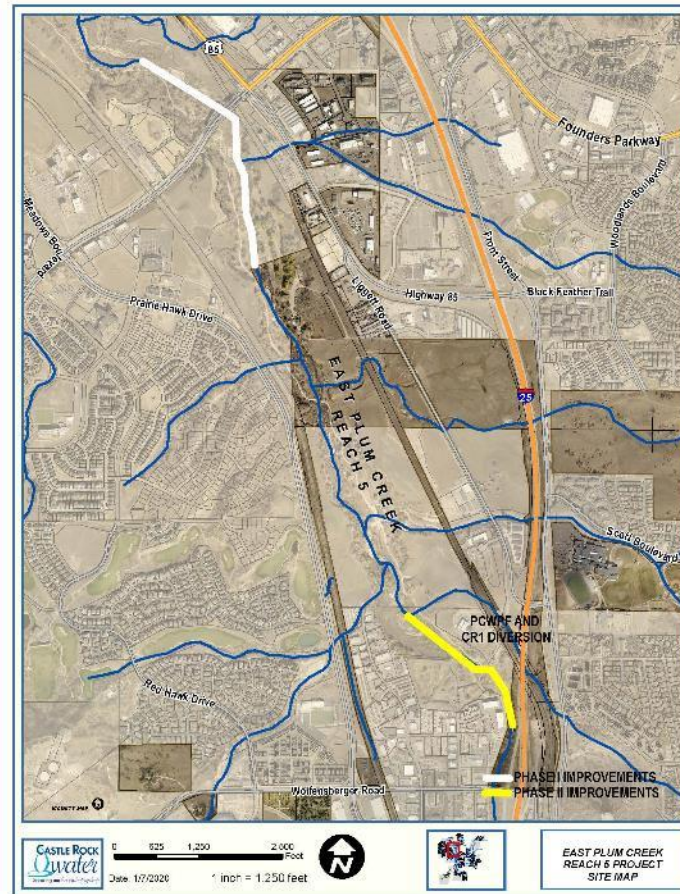
JANUARY 7, 2020



EPC REACH 5 PHASE II

BACKGROUND

- Legacy Project
- Degradation resulting from urbanization
- Migration during flood events
- Critical water & sewer infrastructure
- Sensitive open space & habitat
- Regional trail



EPC REACH 5 PHASE II

SCOPE

- Approx. 1,500 linear feet of stream stabilization improvements
- CR-1 Diversion:
 - Armor & protect to prevent failure
 - Direct flows over screen to optimize intake
- Sanitary Sewer Interceptor:
 - Restore cover over crossing
 - Provide bank protection
- Restore sustainable channel system – reduce channel slope & erosive velocities
- Enhance riparian & wetland habitat
- Public advertisement: 4 proposals received
- Best overall value: Olsson



Bank Erosion threatens Sewer Interceptor

EPC REACH 5 PHASE II

PROJECT SUMMARY

Consultant

- Olsson, Inc.

Budget

- Requested Authorization: \$287,412
- Construction Estimate: \$2,500,000
- Jointly funded by Stormwater, Water Resources & Wastewater

Schedule

- Design & Permitting: 2020 – 2021
- Construction: Fall 2021 – Spring 2022

Recommendations

- Castle Rock Water Commission
- Staff



Grade Control needed at CR-1 Diversion



THANK YOU

QUESTIONS

- Recommended Motion: *"I move to approve Resolution as introduced by title."*