

CRYSTAL VALLEY RANCH SINGLE FAMILY – AGE TARGETED NEIGHBORHOOD

TOWN COUNCIL
OCTOBER 15, 2019



Unincorporated
Douglas County

Rhyolite
Park

Subject Property

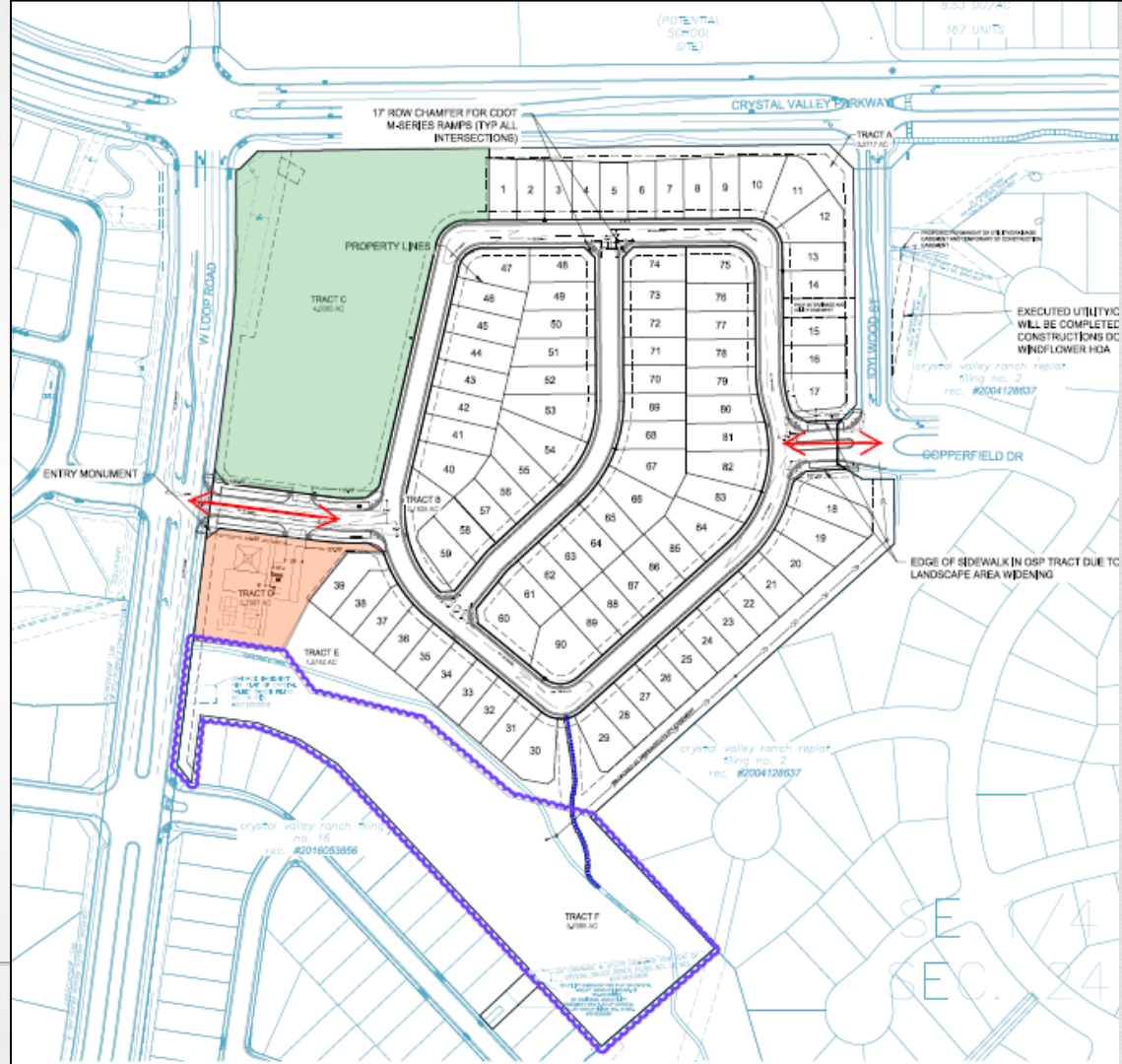
Crystal Valley Parkway

Unincorporated
Douglas County

S Lake Center Road

PROPOSED SDP

- Reduction from 171 units to 90 SF- Detached units that target active adults
- 4 acre future neighborhood commercial site
- 14% Open Space with a neighborhood park, trail connections and streetscape



ANALYSIS

The Planning Commission found the Site Development Plan:

- Supports the goals of the Town's guiding documents
- Is consistent with the Crystal Valley Ranch PD, 6th Amendment
- Meets Chapter 17.38: Site Development Plan Criteria

RECOMMENDATION

No members of the public spoke at the Planning Commission public hearing. The Planning Commission, by a vote of 5-0, recommends Town Council approval.

PROPOSED MOTION

“I move to approve the Resolution as introduced by title.”