

CASTLE ROCK WATER

RESOLUTION:

**AUTHORIZING PAYMENT OF CASTLE ROCK WATER'S
PORTION OF THE 2019 BINNEY CONNECTION FEE & THE
MERIDIAN TITLE CLEANUP UP FEE FOR THE WISE PROJECT**

SEPTEMBER 3, 2019



BINNEY CONNECTION & MERIDIAN TITLE CLEANUP FEES

BACKGROUND

- Water Delivery Agreement (WDA) fully executed on 8/14/13
 - Amended 12/31/13
- South Metro Wise Authority (SMWA) and Denver Water agree to build a future connection to Aurora's Binney plant (WDA 3.3.4)
 - To be built prior to 5/31/21
 - 30 million gallons per day (MGD) capacity
- In 2016 a temporary connection to Aurora's system was built
 - 15 MGD capacity

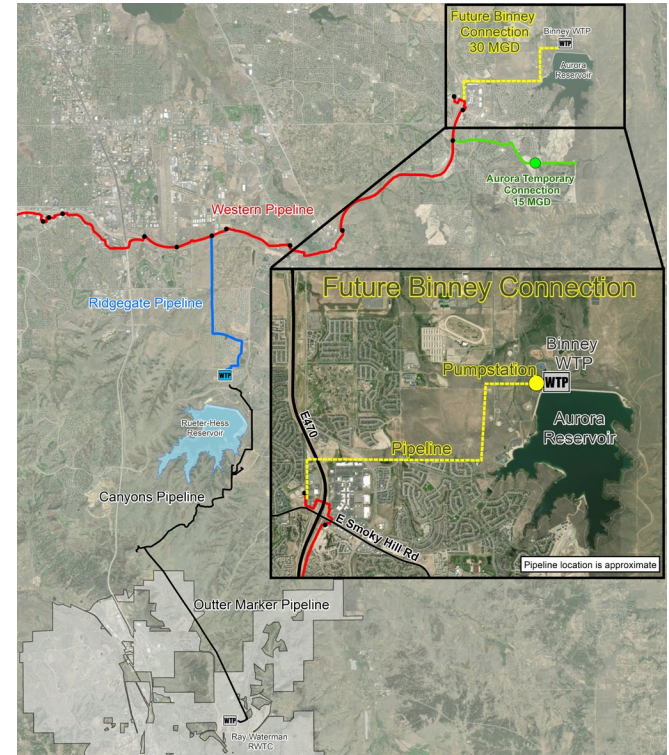


WISE Ribbon-Cutting Event on June 8, 2018

BINNEY CONNECTION & MERIDIAN TITLE CLEANUP FEES

UPDATE

- SMWA completed design on the Binney Connection in 2019
 - Pipeline
 - Pump Station
- SMWA will solicit bids for construction in Fall 2019
- Construction anticipated to begin in 2020
- Per WDA, to be completed by May 31, 2021



BINNEY CONNECTION & MERIDIAN TITLE CLEANUP FEES

BUDGET & SCHEDULE

Budget

- Castle Rock's total estimated cost of Binney Connection
 - \$6.6 million for 4.74 MGD capacity – may need more in future
- Castle Rock's total estimated cost of Western Pipeline Title Cleanup
 - \$450,000

- Adequate budget available for these items

Schedule

- 2019 payment of \$848,015 to SMWA
- 2020 payment of \$5.5 million to SMWA

Binney Connection & Meridian Title Cleanup Costs				
	Paid to Date (\$)	2019 Cost (\$)	2020 Cost (\$)	Total (\$)
Binney Connection	\$ 395,294.10	\$ 788,708.00	\$ 5,382,050.00	\$ 6,566,052.10
Title Cleanup	\$ 301,047.86	\$ 59,307.00	\$ 87,156.00	\$ 447,510.86
Total	\$ 696,341.96	\$ 848,015.00	\$ 5,469,206.00	\$ 7,013,562.96

BINNEY CONNECTION & MERIDIAN TITLE CLEANUP FEES

RECOMMENDATIONS

- Staff
- Questions?





THANK YOU

I MOVE TO APPROVE RESOLUTION NO. 2019-084 AUTHORIZING
PAYMENT OF CASTLE ROCK WATER'S PORTION OF THE 2019 BINNEY
CONNECTION FEE AND THE MERIDIAN TITLE CLEANUP FEE FOR THE
WATER INFRASTRUCTURE SUPPLY EFFICIENCY (WISE) PROJECT