

ADAMO HOMES SINGLE FAMILY NEIGHBORHOOD

Site Development Plan Amendment

PLANNING COMMISSION
AUGUST 22, 2019



VICINITY MAP

Meadows
Filing 16,
Parcels 6 and 7
are located at
the south
entrance to the
Meadows.

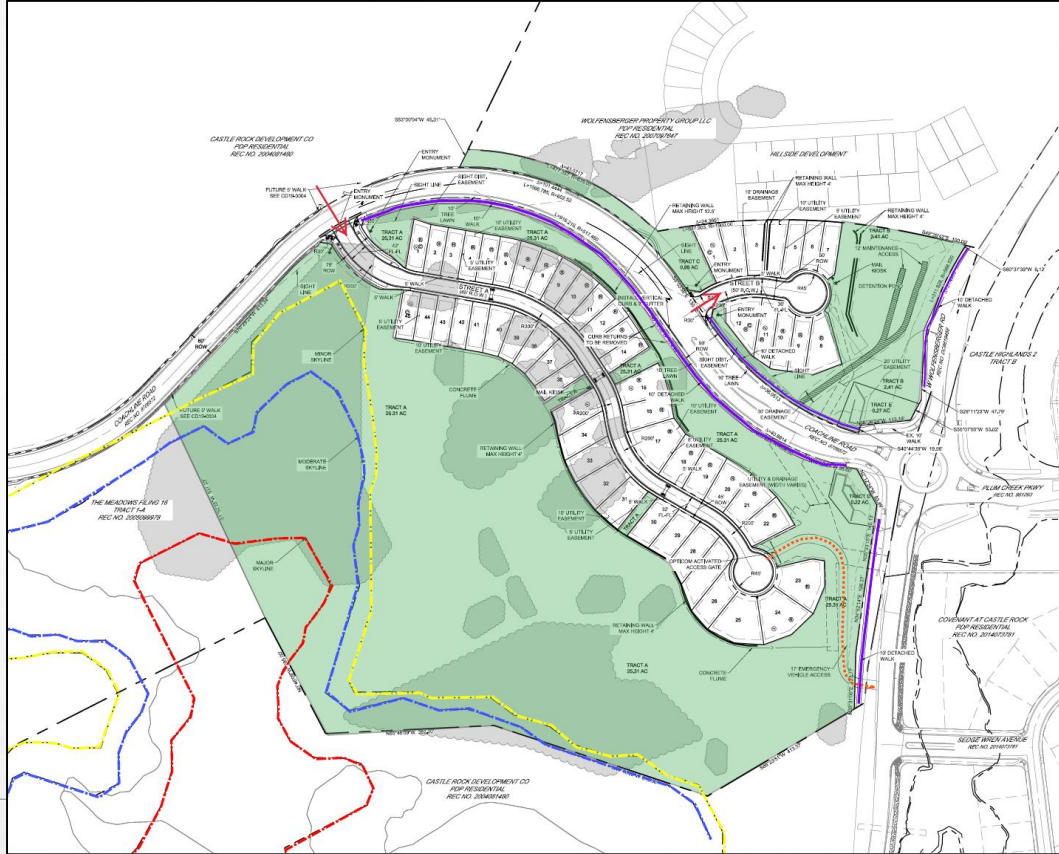


[illegible]

- < >

PROPOSED SDP AMENDMENT

- 57 SF-D lots
- Sidewalk / Streetscape
- 75% Open Space
- Preserves ridgeline
- Preserves vegetation



STAFF ANALYSIS

Staff finds that the proposed Site Development Plan Amendment :

- Supports the goals of the Town's guiding documents
- Is consistent with the Meadows PD, 4th Amendment
- Meets TCMC Chapter 17.38: SDP Amendment criteria

RECOMMENDATION

Staff recommends that Planning Commission recommend approval to Town Council.

PROPOSED MOTION

*“I move to recommend to Town Council approval of
The Meadows Filing 16, Parcel 6 Superblock and Parcel 7
Site Development Plan, Amendment No. 10.*



QUESTIONS & DISCUSSION



DWELLING UNITS VS. LOTS

	Number of Dwelling Units	
	Approved	Proposed
Parcel 6	77 DU	89 DU
Parcel 7	30 DU	45 DU
Total	107 DU	134 DU

	Number of Lots	
	Approved	Proposed
Parcel 6	59 DU	71 DU
Parcel 7	30 DU	45 DU
Total	89 DU	116 DU