

Yearly Sales Tax Revenue



	2014	2015	2016	2017	2018	2019
Prior Year Collections *	\$ 119,928	\$ 231,220	\$ 166,999	\$ 175,216	\$ 82,847	\$ 112,082
Jan	2,336,654	2,529,828	2,708,833	2,939,153	3,303,966	3,441,786
Feb	2,246,138	2,356,187	2,628,882	2,942,236	3,044,888	3,351,721
Mar	3,033,526	3,249,291	3,274,629	3,856,165	4,103,325	4,330,610
Apr	2,595,907	2,697,616	2,991,981	3,559,192	3,487,035	3,841,039
May	2,843,580	3,089,557	3,235,763	3,703,943	4,043,517	4,115,490
Jun	3,295,338	3,607,345	3,836,672	4,304,723	4,493,116	
Jul	2,905,715	3,307,172	3,547,768	3,899,703	4,080,653	
Aug	3,041,373	3,336,810	3,551,913	3,898,049	4,273,947	
Sep	3,215,915	3,513,438	3,946,825	4,190,106	4,313,137	
Oct	2,757,974	2,999,064	3,528,073	3,513,275	3,984,007	
Nov	2,951,578	3,055,060	3,479,493	3,877,471	4,090,571	
Dec	4,113,480	4,367,857	4,855,770	5,426,023	5,521,507	
Totals	\$ 35,457,107	\$ 38,340,444	\$ 41,753,601	\$ 46,285,255	\$ 48,822,516	\$ 19,080,646

Year to Year Change

8.1%

8.9%

10.9%

5.5%

6.1%

Footnote:


* Prior Year Collections line item includes payments received in current year applicable to prior year sales tax returns. As prior year accounting records have been closed and the "previous period" amount is not deemed material to the previous year YTD total, the revenue will be recorded in December of the current year. Prior year monthly and annual totals will not change due to a receipt of a late payment.

Three Year Sales Tax Revenue Comparison



	2017	2018	2017-2018 % Change	2019	2018-2019 % Change
<i>Previous Period *</i>	\$ 175,216	\$ 82,847	NA	\$ 112,082	NA
<i>Jan</i>	2,939,153	3,303,966	12.4%	3,441,786	4.2%
<i>Feb</i>	2,942,236	3,044,888	3.5%	3,351,721	10.1%
<i>Mar</i>	3,856,165	4,103,325	6.4%	4,330,610	5.5%
<i>Apr</i>	3,559,192	3,487,035	-2.0%	3,841,039	10.2%
<i>May</i>	3,703,943	4,043,517	9.2%	4,115,490	1.8%
<i>Jun</i>	4,304,723	4,493,116	4.4%		
<i>Jul</i>	3,899,703	4,080,653	4.6%		
<i>Aug</i>	3,898,049	4,273,947	9.6%		
<i>Sep</i>	4,190,106	4,313,137	2.9%		
<i>Oct</i>	3,513,275	3,984,007	13.4%		
<i>Nov</i>	3,877,471	4,090,571	5.5%		
<i>Dec</i>	5,426,023	5,521,507	1.8%		
Totals	\$ 46,285,255	\$ 48,822,516	5.5%	\$ 19,192,728	
Revenue	\$ 17,000,689	\$ 17,982,731	5.8%	\$ 19,080,646	6.1%

Monthly Sales Tax Comparisons

May 2018	May 2019	% Change Month		
\$ 4,043,517	\$ 4,115,490	1.8%		
2018	2019	% Change		
\$ 17,982,731	\$ 19,080,646	6.1%		
Monthly Sales Tax Comparisons - By Geographical Area				
Category	May 2018	May 2019	% Change Month	% Total Month
Milestone/Metzler	\$ 963,106	\$ 957,592	-0.6%	23.3%
Promenade	565,792	707,829	25.1%	17.2%
Outlet Mall	706,861	601,137	-15.0%	14.6%
Out of State	304,355	344,755	13.3%	8.4%
Out of Town	315,088	337,149	7.0%	8.2%
Downtown	343,644	329,157	-4.2%	8.0%
Wolfensberger	139,328	180,482	29.5%	4.4%
Area Around Outlet Mall	205,369	191,152	-6.9%	4.6%
Founders Market Place	137,510	142,121	3.4%	3.5%
Audit Revenue	26,680	45,260	69.6%	1.1%
Plum Creek	122,755	78,225	-36.3%	1.9%
Justice	115,343	104,324	-9.6%	2.5%
Misc/ Other	55,244	44,853	-18.8%	1.1%
Meadows	42,442	51,454	21.2%	1.3%
Category	2018	2019	% Change	% Total
Milestone/Metzler	\$ 4,221,805	\$ 4,234,152	0.3%	22.2%
Promenade	2,578,256	3,220,520	24.9%	16.9%
Outlet Mall	2,851,241	2,508,610	-12.0%	13.1%
Out of State	1,558,380	1,848,956	18.6%	9.7%
Out of Town	1,828,053	1,647,669	-9.9%	8.6%
Downtown	1,590,897	1,580,151	-0.7%	8.3%
Wolfensberger	632,307	980,204	55.0%	5.1%
Area Around Outlet Mall	693,939	697,839	0.6%	3.7%
Founders Market Place	665,747	679,258	2.0%	3.6%
Audit Revenue	34,538	425,923	1133.2%	2.2%
Plum Creek	428,330	403,495	-5.8%	2.1%
Justice	451,656	405,528	-10.2%	2.1%
Misc/ Other	248,790	208,188	-16.3%	1.1%
Meadows	198,792	240,153	20.8%	1.3%

Sales Tax Districts

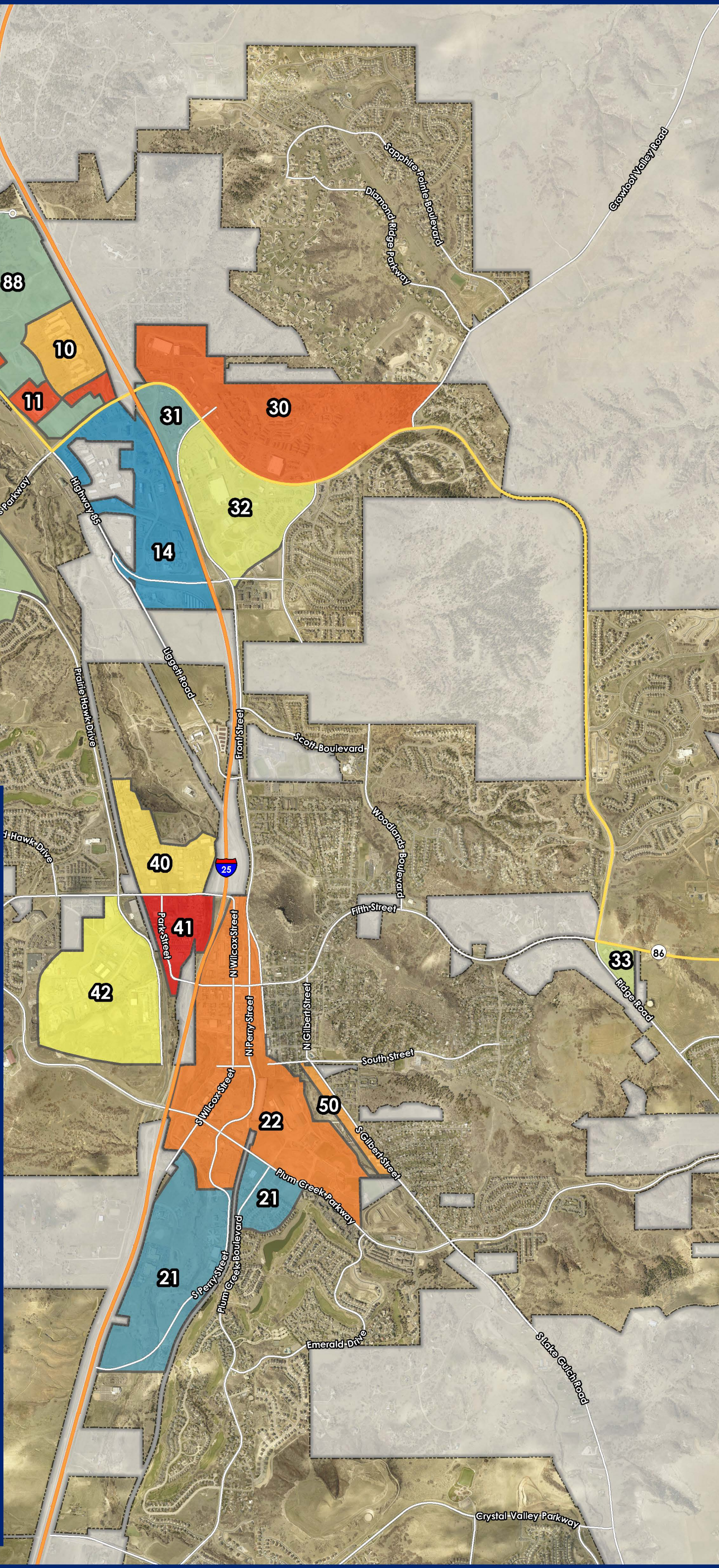
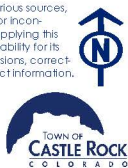
Town of Castle Rock

Legend


- 10, Outlets at Castle Rock
- 11, Area Around Outlet Mall
- 12, Meadows
- 14, Justice
- 21, Plum Creek
- 22, Downtown
- 30, I-25 Founders SE
- 31, S Founders Pkwy
- 32, Milestone
- 33, Founders Marketplace
- 40, Malibu
- 41, Kinner
- 42, Atchison
- 50, Gilbert
- 88, Promenade

0 0.25 0.5 1
Miles

Disclaimer: The data presented has been compiled from various sources, each of which introduces varying degrees of inaccuracies or inconsistencies. Such discrepancies in data are inherent and in supplying this product to the public the Town of Castle Rock assumes no liability for its use or accuracy. For questions or comments regarding omissions, corrections, or updates please visit CRgov.com/directory for contact information.
Copyright 2017, Town of Castle Rock
Coordinate System: SPCS Colorado Central (0502)
Projection: Lambert Conformal Conic
Datum: North American 1983
Units: Foot US
Creation Date: 5/5/2017



Monthly Sales Tax Comparisons

May 2018	May 2019	% Change Month	
\$ 4,043,517	\$ 4,115,490	1.8%	
2018	2019	% Change	
\$ 17,982,731	\$ 19,080,646	6.1%	

Monthly Sales Tax Comparisons - By Industry

Category	May 2018	May 2019	% Change Month	% Total Month
Food and General Merchandise	\$ 1,142,228	\$ 1,187,036	3.9%	28.8%
Apparel and Accessories	737,538	636,775	-13.7%	15.5%
Restaurants & Bars	491,601	532,948	8.4%	12.9%
Misc Retail	323,776	375,836	16.1%	9.1%
Home and Garden	399,539	393,921	-1.4%	9.6%
Utilities	156,080	166,510	6.7%	4.0%
Auto and Auto Items	206,370	167,031	-19.1%	4.1%
Communication	110,424	98,523	-10.8%	2.4%
Furniture and Home Décor	111,105	121,639	9.5%	3.0%
Audit Revenue	26,680	45,260	69.6%	1.1%
Leasing and Rentals	71,794	70,666	-1.6%	1.7%
Agricultural and Construction	108,110	133,876	23.8%	3.3%
Services	47,816	38,420	-19.7%	0.9%
Wholesale and Manufacturing	26,853	53,948	100.9%	1.3%
Ranch Supply/Pet Needs	41,368	47,823	15.6%	1.2%
Hotel	42,235	45,278	7.2%	1.1%

Category	2018	2019	% Change	% Total
Food and General Merchandise	\$ 5,280,037	\$ 5,467,909	3.6%	28.7%
Apparel and Accessories	2,972,456	2,730,656	-8.1%	14.3%
Restaurants & Bars	2,214,815	2,395,908	8.2%	12.6%
Misc Retail	1,551,892	1,859,383	19.8%	9.7%
Home and Garden	1,354,937	1,455,987	7.5%	7.6%
Utilities	987,267	1,016,559	3.0%	5.3%
Auto and Auto Items	866,347	862,793	-0.4%	4.5%
Communication	578,834	565,075	-2.4%	3.0%
Furniture and Home Décor	525,112	540,036	2.8%	2.8%
Audit Revenue	34,538	425,923	1133.2%	2.2%
Leasing and Rentals	377,259	423,783	12.3%	2.2%
Agricultural and Construction	472,813	496,059	4.9%	2.6%
Services	266,448	240,642	-9.7%	1.3%
Wholesale and Manufacturing	165,355	244,454	47.8%	1.3%
Ranch Supply/Pet Needs	199,722	209,836	5.1%	1.1%
Hotel	134,899	145,643	8.0%	0.8%

* YTD break out does not include prior year collections