

CASTLE ROCK WATER

RESOLUTION – CONSTRUCTION CONTRACT WITH RN CIVIL CONSTRUCTION FOR THE PLUM CREEK DIVERSION PUMP STATION PROJECT

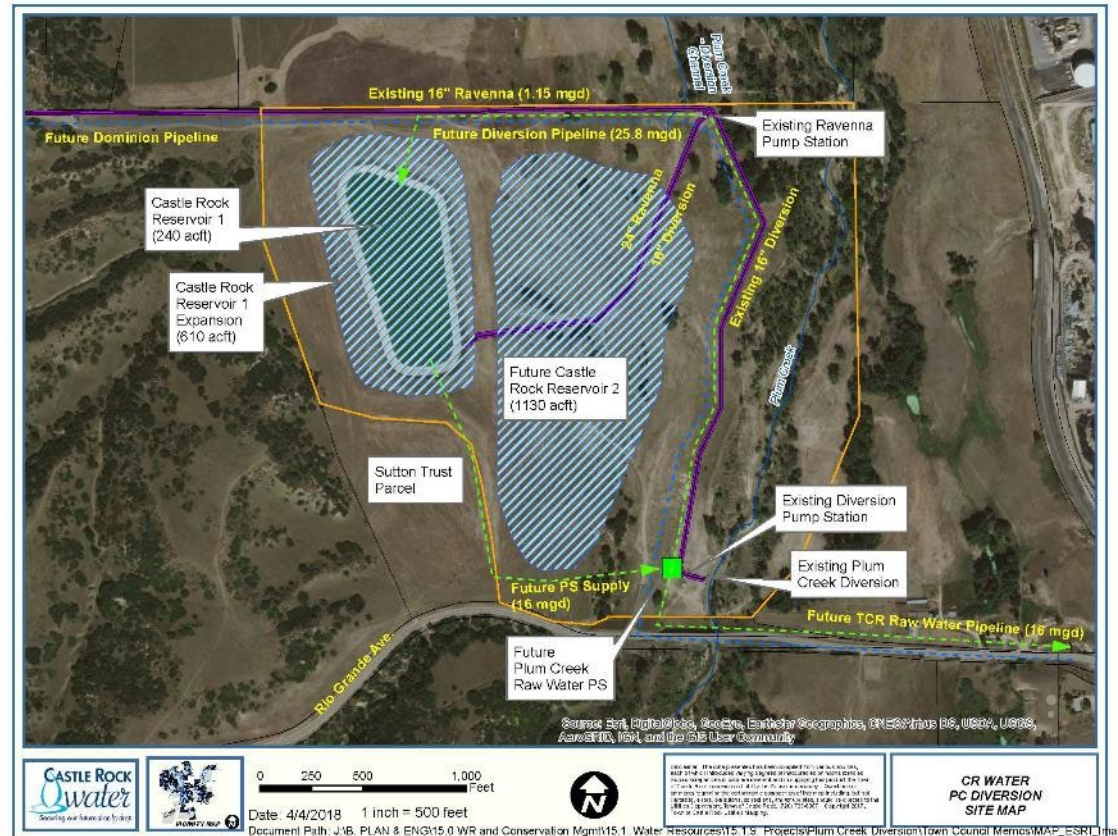
MAY 21, 2019



PUMP STATION PROJECT

BACKGROUND

- Plum Creek Diversion was purchased in 2017
- Located at the Plum Creek Diversion site west of Sedalia
- Diversion can capture up to 25.8 mgd
- Existing pumping capacity is 1.15 mgd to CRR1



PUMP STATION PROJECT

DETAILS

- Douglas County Planning Commission Approval in December 2018
- New pump station located near existing diversion
- Pump Station capacities

	Current	Build Out
Diversion Pumps	2.5 – 25.8 mgd	
Raw Water Pumps	3 – 8 mgd	3 – 16 mgd
Ravenna	-	1 mgd

- Existing wet well converted to settling basin



Plum Creek Diversion

PUMP STATION PROJECT

Construction Contract

- Project was competitively bid
- Engineering Estimate = \$10.5 M
- Contract price = \$9.23 M
- 10% town managed contingency
- Total authorization of \$10.15 M

Schedule

- Complete by June 1, 2020

Recommendations

- Staff
- Castle Rock Water commission



Plum Creek Diversion



THANK YOU

QUESTIONS

- Recommended Motion: *"I move to approve Resolution as introduced by title."*

CASTLE ROCK WATER

RESOLUTION – CONSTRUCTION MANAGEMENT SERVICES CONTRACT WITH DEWBERRY ENGINEERS FOR THE PLUM CREEK DIVERSION PUMP STATION PROJECT

MAY 21, 2019



PUMP STATION PROJECT

Scope

- On-site observation and inspections
- Permitting assistance with Douglas County
- Submittal reviews, Requests for information
- Start-up assistance, Record drawings

Construction Management Contract

- Sole-sources with Dewberry
- Contract amount \$496,470

Schedule

- Complete by June 1, 2020

Recommendations

- Staff



Plum Creek Diversion



THANK YOU

QUESTIONS

- Recommended Motion: *"I move to approve Resolution as introduced by title."*