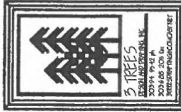




(N) FRONT ELEVATION

SCALE 1/4" = 1'-0"

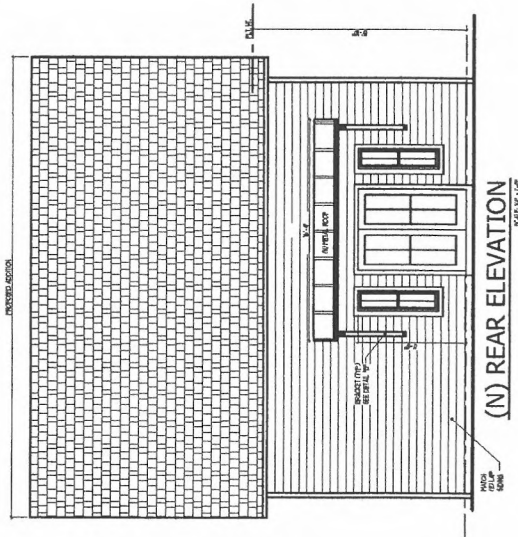
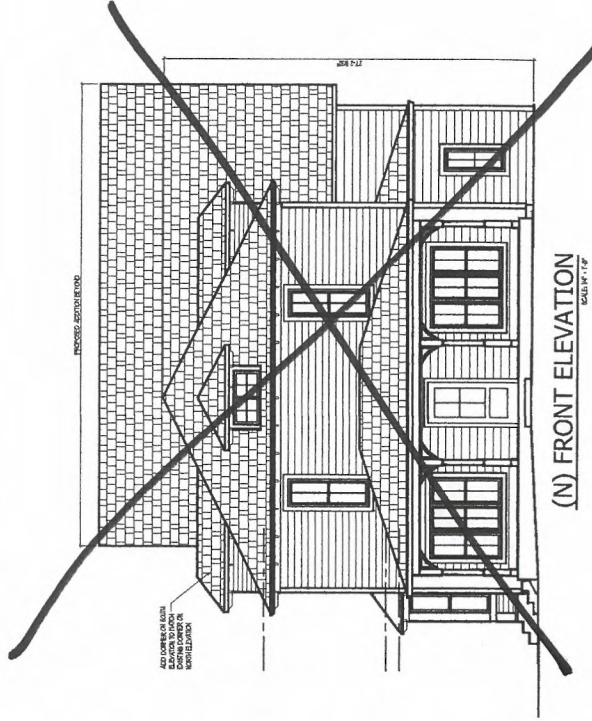


VEZZANI RESIDENCE
7 LEWIS ST.
CASTLE ROCK, CO



3A1

ELEVATION "A"

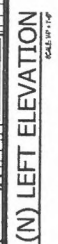


NOTES:
1. ALL FINISHES SHALL BE MATCHED AT ALL JOINTS AND CORNERS.
2. ALL FINISHES SHALL BE MATCHED AT ALL JOINTS AND CORNERS.
3. ALL FINISHES SHALL BE MATCHED AT ALL JOINTS AND CORNERS.
4. ALL FINISHES SHALL BE MATCHED AT ALL JOINTS AND CORNERS.
5. ALL FINISHES SHALL BE MATCHED AT ALL JOINTS AND CORNERS.
6. ALL FINISHES SHALL BE MATCHED AT ALL JOINTS AND CORNERS.
7. ALL FINISHES SHALL BE MATCHED AT ALL JOINTS AND CORNERS.
8. ALL FINISHES SHALL BE MATCHED AT ALL JOINTS AND CORNERS.
9. ALL FINISHES SHALL BE MATCHED AT ALL JOINTS AND CORNERS.
10. ALL FINISHES SHALL BE MATCHED AT ALL JOINTS AND CORNERS.

NOTES:
1. ALL FINISHES SHALL BE MATCHED AT ALL JOINTS AND CORNERS.
2. ALL FINISHES SHALL BE MATCHED AT ALL JOINTS AND CORNERS.
3. ALL FINISHES SHALL BE MATCHED AT ALL JOINTS AND CORNERS.
4. ALL FINISHES SHALL BE MATCHED AT ALL JOINTS AND CORNERS.
5. ALL FINISHES SHALL BE MATCHED AT ALL JOINTS AND CORNERS.
6. ALL FINISHES SHALL BE MATCHED AT ALL JOINTS AND CORNERS.
7. ALL FINISHES SHALL BE MATCHED AT ALL JOINTS AND CORNERS.
8. ALL FINISHES SHALL BE MATCHED AT ALL JOINTS AND CORNERS.
9. ALL FINISHES SHALL BE MATCHED AT ALL JOINTS AND CORNERS.
10. ALL FINISHES SHALL BE MATCHED AT ALL JOINTS AND CORNERS.



(N) RIGHT ELEVATION



(N) LEFT ELEVATION

★ PLEASE NOTE:
EACH BROCHURE MUST HAVE ONE INDEX THAT
COMPLIES WITH BUREAU CODES. IF THERE IS NO
ACCESS TO EXTENSIVE THRUOUT A BOOK THE
BROCHURE MUST HAVE A PARENTHESIS LISTING
OF 4+ ABOVE PRESENT ALLOCATION OF THAT
PARTICULAR BOOK

NOTE:
PLUMBING SHALL BE INSTALLED AT WALL AND ROOF INTERSECTIONS,
CHIMNEY AND WALL INTERSECTIONS, AT ELEVATIONS AT ALL CHANGES IN
ROOF SLOPE OR DIRECTION AND AROUND ROOF OPENINGS.



Technical drawing of a decorative bracket detail. The drawing includes three views: a front view (top left), a side view (top right), and an end view (bottom left). The front view shows a bracket with a curved top and a rectangular base, with dimensions labeled: d_1 , d_2 , d_3 , d_4 , d_5 , d_6 , d_7 , d_8 , d_9 , d_{10} , d_{11} , d_{12} , d_{13} , d_{14} , d_{15} , d_{16} , d_{17} , d_{18} , d_{19} , d_{20} , d_{21} , d_{22} , d_{23} , d_{24} , d_{25} , d_{26} , d_{27} , d_{28} , d_{29} , d_{30} , d_{31} , d_{32} , d_{33} , d_{34} , d_{35} , d_{36} , d_{37} , d_{38} , d_{39} , d_{40} , d_{41} , d_{42} , d_{43} , d_{44} , d_{45} , d_{46} , d_{47} , d_{48} , d_{49} , d_{50} , d_{51} , d_{52} , d_{53} , d_{54} , d_{55} , d_{56} , d_{57} , d_{58} , d_{59} , d_{60} , d_{61} , d_{62} , d_{63} , d_{64} , d_{65} , d_{66} , d_{67} , d_{68} , d_{69} , d_{70} , d_{71} , d_{72} , d_{73} , d_{74} , d_{75} , d_{76} , d_{77} , d_{78} , d_{79} , d_{80} , d_{81} , d_{82} , d_{83} , d_{84} , d_{85} , d_{86} , d_{87} , d_{88} , d_{89} , d_{90} , d_{91} , d_{92} , d_{93} , d_{94} , d_{95} , d_{96} , d_{97} , d_{98} , d_{99} , d_{100} . The side view shows the bracket from the side, with dimensions labeled: d_1 , d_2 , d_3 , d_4 , d_5 , d_6 , d_7 , d_8 , d_9 , d_{10} , d_{11} , d_{12} , d_{13} , d_{14} , d_{15} , d_{16} , d_{17} , d_{18} , d_{19} , d_{20} , d_{21} , d_{22} , d_{23} , d_{24} , d_{25} , d_{26} , d_{27} , d_{28} , d_{29} , d_{30} , d_{31} , d_{32} , d_{33} , d_{34} , d_{35} , d_{36} , d_{37} , d_{38} , d_{39} , d_{40} , d_{41} , d_{42} , d_{43} , d_{44} , d_{45} , d_{46} , d_{47} , d_{48} , d_{49} , d_{50} , d_{51} , d_{52} , d_{53} , d_{54} , d_{55} , d_{56} , d_{57} , d_{58} , d_{59} , d_{60} , d_{61} , d_{62} , d_{63} , d_{64} , d_{65} , d_{66} , d_{67} , d_{68} , d_{69} , d_{70} , d_{71} , d_{72} , d_{73} , d_{74} , d_{75} , d_{76} , d_{77} , d_{78} , d_{79} , d_{80} , d_{81} , d_{82} , d_{83} , d_{84} , d_{85} , d_{86} , d_{87} , d_{88} , d_{89} , d_{90} , d_{91} , d_{92} , d_{93} , d_{94} , d_{95} , d_{96} , d_{97} , d_{98} , d_{99} , d_{100} . The end view shows the bracket from the end, with dimensions labeled: d_1 , d_2 , d_3 , d_4 , d_5 , d_6 , d_7 , d_8 , d_9 , d_{10} , d_{11} , d_{12} , d_{13} , d_{14} , d_{15} , d_{16} , d_{17} , d_{18} , d_{19} , d_{20} , d_{21} , d_{22} , d_{23} , d_{24} , d_{25} , d_{26} , d_{27} , d_{28} , d_{29} , d_{30} , d_{31} , d_{32} , d_{33} , d_{34} , d_{35} , d_{36} , d_{37} , d_{38} , d_{39} , d_{40} , d_{41} , d_{42} , d_{43} , d_{44} , d_{45} , d_{46} , d_{47} , d_{48} , d_{49} , d_{50} , d_{51} , d_{52} , d_{53} , d_{54} , d_{55} , d_{56} , d_{57} , d_{58} , d_{59} , d_{60} , d_{61} , d_{62} , d_{63} , d_{64} , d_{65} , d_{66} , d_{67} , d_{68} , d_{69} , d_{70} , d_{71} , d_{72} , d_{73} , d_{74} , d_{75} , d_{76} , d_{77} , d_{78} , d_{79} , d_{80} , d_{81} , d_{82} , d_{83} , d_{84} , d_{85} , d_{86} , d_{87} , d_{88} , d_{89} , d_{90} , d_{91} , d_{92} , d_{93} , d_{94} , d_{95} , d_{96} , d_{97} , d_{98} , d_{99} , d_{100} . The drawing is labeled "FRONT VIEW", "SIDE VIEW", and "END VIEW".

Technical drawing of a decorative bracket detail 'A'. The drawing includes four views: a front view (top left), a side view (top right), an end view (bottom left), and another side view (bottom right). Dimensions are indicated with arrows and labels: 'a' for the top horizontal width, 'b' for the bottom horizontal width, 'c' for the depth, 'd' for the vertical height of the bracket, 'e' for the vertical height of the base, and 'f' for the vertical height of the decorative element. The drawing is labeled 'DECORATIVE BRACKET DETAIL "A"' and 'SCALE 1" = 1-0"'. The drawing is oriented vertically on the page.