

STARBUCKS COFFEE #52953  
Wolfensberger & I-25  
20 E. Wolfensberger  
Castle Rock, CO 80109



17-39028

***HILTON*DISPLAYS**

125 HILLSIDE DRIVE • GREENVILLE SC 29607

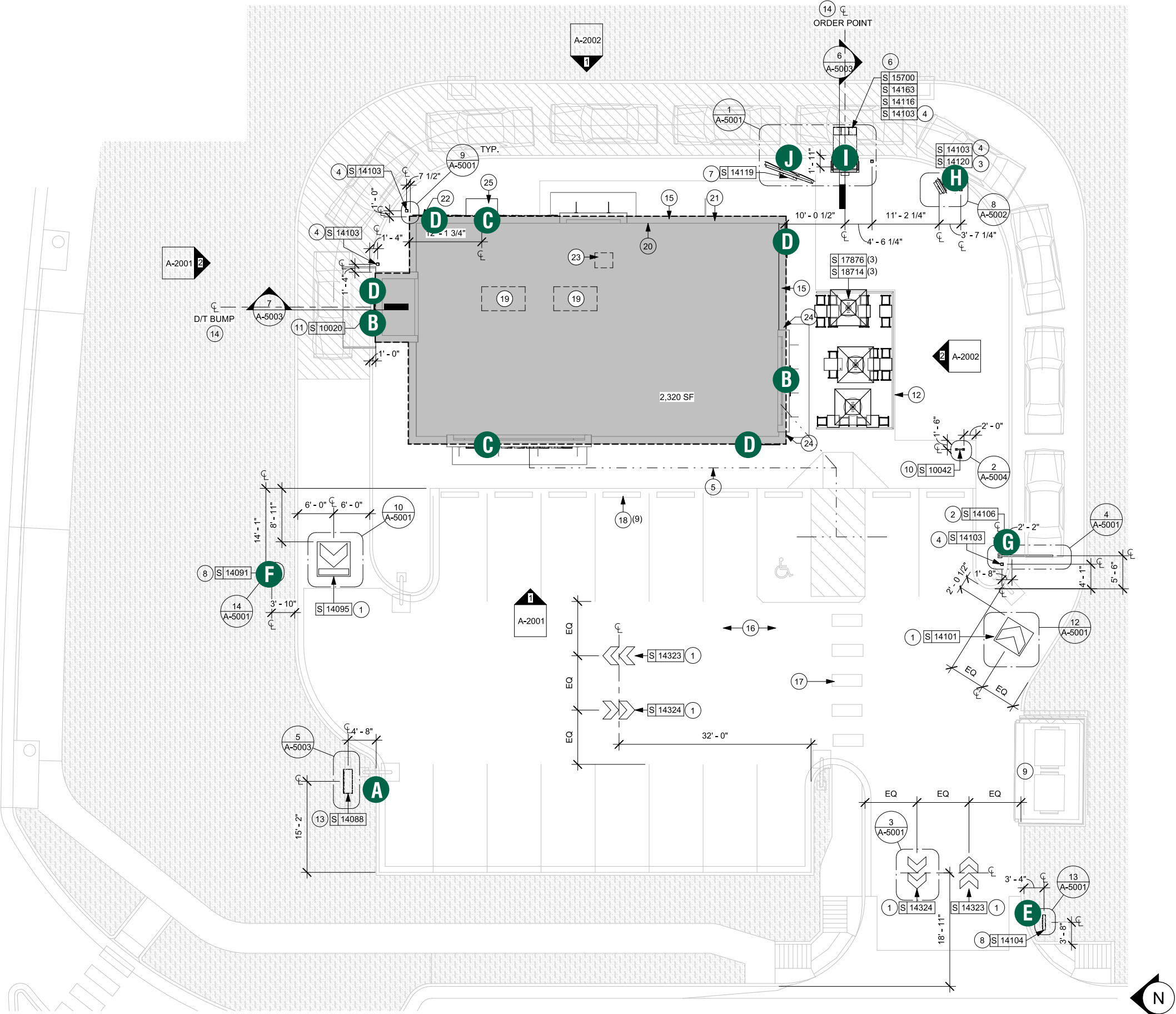
P 800 353 9132 • F 864 242 2204

[www.hiltondisplays.com](http://www.hiltondisplays.com)

SITE PLAN

- A PYLON
- B 54" LOGO
- C 22" CHANNEL LETTERS
- D 72" DT WALL SIGN
- E 46" DT DIRECTIONAL
- F 46" TY/EO DIRECTIONAL
- G CLEARANCE BAR
- H PRE-MENU BOARD
- I DOS/DCB/CANOPY
- J MENU BOARD

E WOLFENBERGER RD



KINNER ST.

**HILTONDISPLAYS**  
125 HILLSIDE DRIVE • GREENVILLE SC 29607  
P 800 353 9132 • F 864 242 2204  
www.hiltondisplays.com

**QID 17-39028**

JOB NAME

Starbucks 52953

LOCATION

20 E. Wolfenberger  
Castle Rock, CO 80109

CUSTOMER CONTACT

SALESMAN / PM

Jennifer Nichols

DESIGNER

Jesse Black

DWG. DATE

02-06-18

REV. DATE / REVISION

8-13-18 / Sloan Update / GM

9-11-18 / GM

9-13-18 BS / Pylon part#

SCALE

1/32" = 1'

FILE

2018/Starbucks/Castle Rock  
CO/17-39028/SB Castle Rock  
CO 17-39028.cdr

DESIGN SPECIFICATIONS ACCEPTED BY:

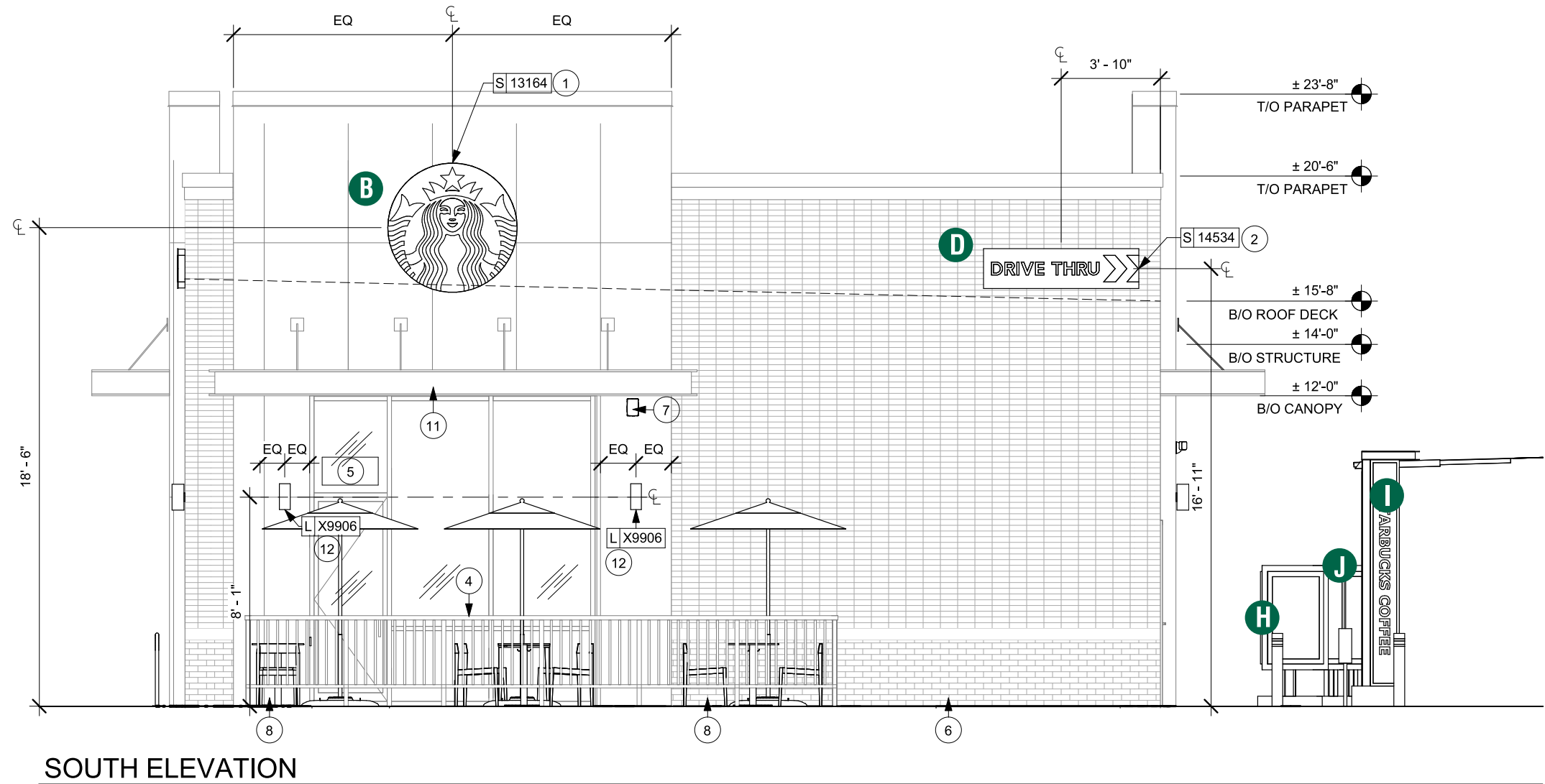
|         |           |
|---------|-----------|
| EST:    | CLIENT:   |
| SLS/PM: | LANDLORD: |

THE INTENT OF THIS DRAWING IS TO SHOW A CONCEPTUAL REPRESENTATION OF THE PROPOSED SIGNAGE. DUE TO VARIATIONS IN PRINTING DEVICES AND SUBSTRATES, THE FINISHED PRODUCT MAY DIFFER SLIGHTLY FROM DRAWING.



ELEVATION

- A PYLON
- B 54" LOGO
- C 22" CHANNEL LETTERS
- D 72" DT WALL SIGN
- E 46" DT DIRECTIONAL
- F 46" TY/EO DIRECTIONAL
- G CLEARANCE BAR
- H PRE-MENU BOARD
- I DOS/DCB/CANOPY
- J MENU BOARD



**HILTONDISPLAYS**  
125 HILLSIDE DRIVE • GREENVILLE SC 29607  
P 800 353 9132 • F 864 242 2204  
www.hiltondisplays.com

**QID 17-39028**

**JOB NAME**

Starbucks 52953

**LOCATION**

20 E. Wolfenberger  
Castle Rock, CO 80109

**CUSTOMER CONTACT**

**SALESMAN / PM**

Jennifer Nichols

**DESIGNER**

Jesse Black

**DWG. DATE**

02-06-18

**REV. DATE / REVISION**

8-13-18 / Sloan Update / GM

9-11-18 / GM

9-13-18 BS / Pylon part#

**SCALE**

3/16" = 1'

**FILE**

2018/Starbucks/Castle Rock  
CO/17-39028/SB Castle Rock  
CO 17-39028.cdr

**DESIGN SPECIFICATIONS ACCEPTED BY:**

|         |           |
|---------|-----------|
| EST:    | CLIENT:   |
| SLS/PM: | LANDLORD: |

THE INTENT OF THIS DRAWING IS TO SHOW A CONCEPTUAL REPRESENTATION OF THE PROPOSED SIGNAGE. DUE TO VARIATIONS IN PRINTING DEVICES AND SUBSTRATES, THE FINISHED PRODUCT MAY DIFFER SLIGHTLY FROM DRAWING.



- A PYLON**
- B 54" LOGO**
- C 22" CHANNEL LETTERS**
- D 72" DT WALL SIGN**
- E 46" DT DIRECTIONAL**
- F 46" TY/EO DIRECTIONAL**
- G CLEARANCE BAR**
- H PRE-MENU BOARD**
- I DOS/DCB/CANOPY**
- J MENU BOARD**

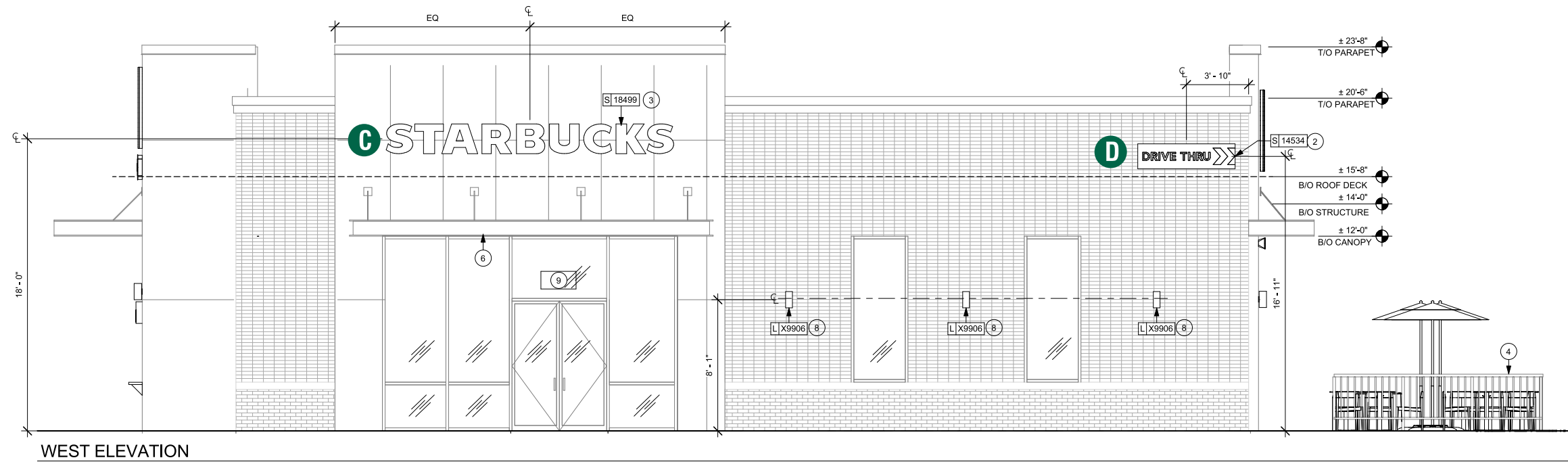


 Underwriters  
Laboratories Inc.

|      |          |
|------|----------|
| DRY  |          |
| DAMP |          |
| WET  | <b>X</b> |

ELEVATION

- A PYLON
- B 54" LOGO
- C 22" CHANNEL LETTERS
- D 72" DT WALL SIGN
- E 46" DT DIRECTIONAL
- F 46" TY/EO DIRECTIONAL
- G CLEARANCE BAR
- H PRE-MENU BOARD
- I DOS/DCB/CANOPY
- J MENU BOARD



**HILTONDISPLAYS**  
125 HILLSIDE DRIVE • GREENVILLE SC 29607  
P 800 353 9132 • F 864 242 2204  
www.hiltondisplays.com

**QID 17-39028**

**JOB NAME**

Starbucks 52953

**LOCATION**

20 E. Wolfenberger  
Castle Rock, CO 80109

**CUSTOMER CONTACT**

**SALESMAN / PM**

Jennifer Nichols

**DESIGNER**

Jesse Black

**DWG. DATE**

02-06-18

**REV. DATE / REVISION**

8-13-18 / Sloan Update / GM

9-11-18 / GM

9-13-18 BS / Pylon part#

**SCALE**

As Noted

**FILE**

2018/Starbucks/Castle Rock  
CO/17-39028/SB Castle Rock  
CO 17-39028.cdr

**DESIGN SPECIFICATIONS ACCEPTED BY:**

|         |           |
|---------|-----------|
| EST:    | CLIENT:   |
| SLS/PM: | LANDLORD: |

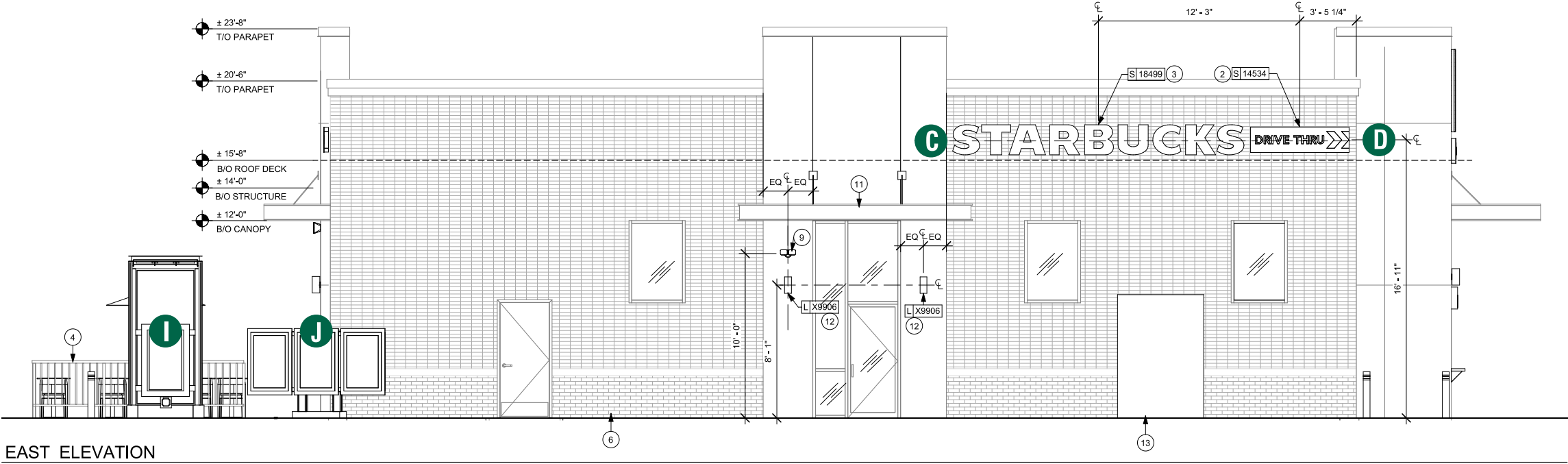
THE INTENT OF THIS DRAWING IS TO SHOW A CONCEPTUAL REPRESENTATION OF THE PROPOSED SIGNAGE. DUE TO VARIATIONS IN PRINTING DEVICES AND SUBSTRATES, THE FINISHED PRODUCT MAY DIFFER SLIGHTLY FROM DRAWING.





ELEVATION

- A PYLON
- B 54" LOGO
- C 22" CHANNEL LETTERS
- D 72" DT WALL SIGN
- E 46" DT DIRECTIONAL
- F 46" TY/EO DIRECTIONAL
- G CLEARANCE BAR
- H PRE-MENU BOARD
- I DOS/DCB/CANOPY
- J MENU BOARD



**HILTONDISPLAYS**  
125 HILLSIDE DRIVE • GREENVILLE SC 29607  
P 800 353 9132 • F 864 242 2204  
www.hiltondisplays.com

**QID 17-39028**

**JOB NAME**

Starbucks 52953

**LOCATION**

20 E. Wolfenberger  
Castle Rock, CO 80109

**CUSTOMER CONTACT**

**SALESMAN / PM**

Jennifer Nichols

**DESIGNER**

Jesse Black

**DWG. DATE**

02-06-18

**REV. DATE / REVISION**

8-13-18 / Sloan Update / GM

9-11-18 / GM

9-13-18 BS / Pylon part#

**SCALE**

As Noted

**FILE**

2018/Starbucks/Castle Rock  
CO/17-39028/SB Castle Rock  
CO 17-39028.cdr

**DESIGN SPECIFICATIONS ACCEPTED BY:**

|         |           |
|---------|-----------|
| EST:    | CLIENT:   |
| SLS/PM: | LANDLORD: |

THE INTENT OF THIS DRAWING IS TO SHOW A CONCEPTUAL REPRESENTATION OF THE PROPOSED SIGNAGE. DUE TO VARIATIONS IN PRINTING DEVICES AND SUBSTRATES, THE FINISHED PRODUCT MAY DIFFER SLIGHTLY FROM DRAWING.



108” ILLUMINATED D/F PYLON

Qty. 1  
Qty. 1  
SBC-S14096-115-SL  
SBC-17-39028-2



Sign Specifications:

- Disk Cabinet:
- Steel angle frame with .063" [2mm] aluminum filler painted black to match RAL 7021M.
  - SignComp retro bleed flex face retainer painted black to match RAL 7021M.
  - Areas using black paint to match RAL 7021M shall have a max 20% gloss level, match sample.
  - Flexible face substrate with first surface applied 3M 3630-76 Holly Green vinyl film. White siren to be weeded out of green vinyl.
  - Interior aluminum surfaces of sign cabinet to be painted white with Lacryl Starbrite.
  - All fasteners used in the assembly of internal components shall be coated to prevent corrosion.
  - Graphic elements are internally illuminated using Sloan PrismBeam LED
  - All electrical components are removable for service.

Drive Thru Cabinet:

- Steel angle frame with extruded aluminum retainers and .063" [2mm] aluminum filler painted black to match RAL 7021M.
- 3/16" [5mm] pigmented white solar grade polycarbonate face panel to match R&H #7328 with 3M #7725-22 opaque black vinyl - copy and chevrons to be weeded out.
- Interior aluminum surfaces of sign cabinet to be painted white with Lacryl Starbrite.
- All fasteners used in the assembly of internal components shall be coated to prevent corrosion.
- Graphic elements are internally illuminated using Sloan PrismBeam LED
- All electrical components are removable for service.

Support:

- Supporting structure will be all welded steel tube, pipe, channel and plate construction painted black to match RAL 7021M

Support structure and foundation type are subject to change upon review by licensed engineer if wind speeds based on geographic location of structure are greater than 115mph. Alternate wind speeds and soil conditions will result in alternate foundation type, structural tubing and/or pipe size used to support it.

**HILTONDISPLAYS**

125 HILLSIDE DRIVE • GREENVILLE SC 29607  
P 800 353 9132 • F 864 242 2204  
www.hiltondisplays.com

**QID 17-39028**

**JOB NAME**

**Starbucks 52953**

**LOCATION**

**20 E. Wolfenberger  
Castle Rock, CO 80109**

**CUSTOMER CONTACT**

**SALESMAN / PM**

**Jennifer Nichols**

**DESIGNER**

**Jesse Black**

**DWG. DATE**

**02-06-18**

**REV. DATE / REVISION**

**8-13-18 / Sloan Update / GM**

**9-11-18 / GM**

**9-13-18 BS / Pylon part#**

**SCALE**

**As Noted**

**FILE**

**2018/Starbucks/Castle Rock  
CO/17-39028/SB Castle Rock  
CO 17-39028.cdr**

**DESIGN SPECIFICATIONS ACCEPTED BY:**

|         |           |
|---------|-----------|
| EST:    | CLIENT:   |
| SLS/PM: | LANDLORD: |

THE INTENT OF THIS DRAWING IS TO SHOW A CONCEPTUAL REPRESENTATION OF THE PROPOSED SIGNAGE. DUE TO VARIATIONS IN PRINTING DEVICES AND SUBSTRATES, THE FINISHED PRODUCT MAY DIFFER SLIGHTLY FROM DRAWING.



| COLOR LEGEND |             |   |
|--------------|-------------|---|
|              | PMS/PAINT   | VINYL                                     |
|              | PMS 3425 C  | 3M 3630-76                                |
|              | RAL 7021M   | 3M 3630-22                                |
|              | PMS WHITE   | 3M 3630-20/ 7725-10<br>TRANSLUCENT OPAQUE |
|              | PMS 369 C   | NA  |
|              | REFL. WHITE | 3M 680-10                                 |

| Size         | Sq. Ft. <sup>1</sup> | Sq. Ft. <sup>2</sup> | Volts | Amps |
|--------------|----------------------|----------------------|-------|------|
| 30' (9144mm) | 94.08                | 97.84                | 120   | 6.0  |

1: Figured as illuminated area  
2: Figured as complete signage

108” ILLUMINATED D/F PYLON

A



**HILTONDISPLAYS**  
125 HILLSIDE DRIVE • GREENVILLE SC 29607  
P 800 353 9132 • F 864 242 2204  
www.hiltondisplays.com

**QID 17-39028**

**JOB NAME**

Starbucks 52953

**LOCATION**

20 E. Wolfenberger  
Castle Rock, CO 80109

**CUSTOMER CONTACT**

**SALESMAN / PM**

Jennifer Nichols

**DESIGNER**

Jesse Black

**DWG. DATE**

02-06-18

**REV. DATE / REVISION**

8-13-18 / Sloan Update / GM

9-11-18 / GM

9-13-18 BS / Pylon part#

**SCALE**

As Noted

**FILE**

2018/Starbucks/Castle Rock  
CO/17-39028/SB Castle Rock  
CO 17-39028.cdr

**DESIGN SPECIFICATIONS ACCEPTED BY:**

|         |           |
|---------|-----------|
| EST:    | CLIENT:   |
| SLS/PM: | LANDLORD: |

THE INTENT OF THIS DRAWING IS TO SHOW A CONCEPTUAL REPRESENTATION OF THE PROPOSED SIGNAGE. DUE TO VARIATIONS IN PRINTING DEVICES AND SUBSTRATES, THE FINISHED PRODUCT MAY DIFFER SLIGHTLY FROM DRAWING.





54” ILLUMINATED SIREN

SBC-WS-54-SL

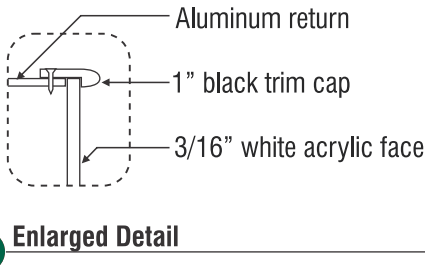
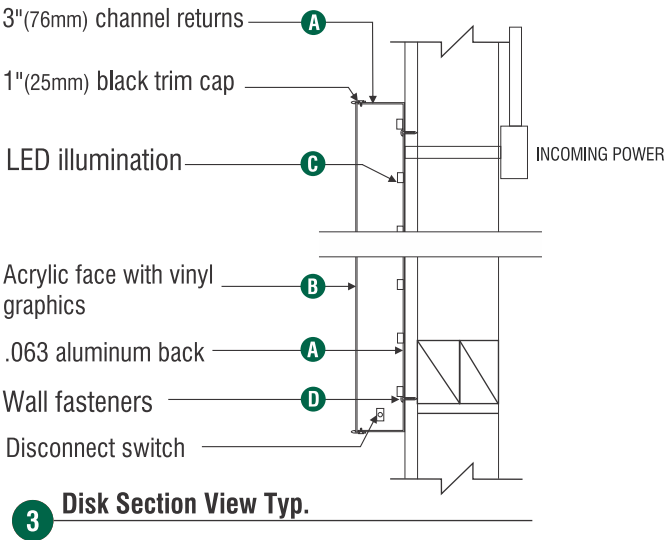
Qty. 2

B



SPECIFICATIONS:

- A Single faced internally illuminated wall mount logo disk. Cabinet to be 3" deep, fabricated aluminum returns and back. Paint cabinet black. Faces to be 3/16" white Plex with 1" black trimcap
- B Graphics of logo to be 1st surface 3M Translucent Scotchcal vinyl- Holly Green #3630-76. Siren to show thru White.
- C Internally illuminated logo disk with Sloan white LED's



| COLOR LEGEND |             |   |
|--------------|-------------|---|
|              | PMS/PAINT   | VINYL                                     |
|              | PMS 3425 C  | 3M 3630-76                                |
|              | RAL 7021M   | 3M 3630-22                                |
|              | PMS WHITE   | 3M 3630-20/ 7725-10<br>TRANSLUCENT OPAQUE |
|              | PMS 369 C   | NA  |
|              | REFL. WHITE | 3M 680-10                                 |

| wall mount EVOLVED |        |       |         |
|--------------------|--------|-------|---------|
| Size               | Sq.Ft. | Sq.M. | Volts   |
| 54"                | 15.90  | 1.477 | 120/277 |

**HILTONDISPLAYS**

125 HILLSIDE DRIVE • GREENVILLE SC 29607  
P 800 353 9132 • F 864 242 2204  
www.hiltondisplays.com

QID 17-39028

JOB NAME

Starbucks 52953

LOCATION

20 E. Wolfenberger  
Castle Rock, CO 80109

CUSTOMER CONTACT

SALESMAN / PM

Jennifer Nichols

DESIGNER

Jesse Black

DWG. DATE

02-06-18

REV. DATE / REVISION

8-13-18 / Sloan Update / GM

9-11-18 / GM

9-13-18 BS / Pylon part#

SCALE

As Noted

FILE

2018/Starbucks/Castle Rock  
CO/17-39028/SB Castle Rock  
CO 17-39028.cdr

DESIGN SPECIFICATIONS ACCEPTED BY:

|         |           |
|---------|-----------|
| EST:    | CLIENT:   |
| SLS/PM: | LANDLORD: |

THE INTENT OF THIS DRAWING IS TO SHOW A CONCEPTUAL REPRESENTATION OF THE PROPOSED SIGNAGE. DUE TO VARIATIONS IN PRINTING DEVICES AND SUBSTRATES, THE FINISHED PRODUCT MAY DIFFER SLIGHTLY FROM DRAWING.



22” CHANNEL LETTERS - RACEWAY

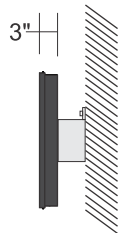
SBC-S12386-SB-SL

Qty. 2

C



1 Front View



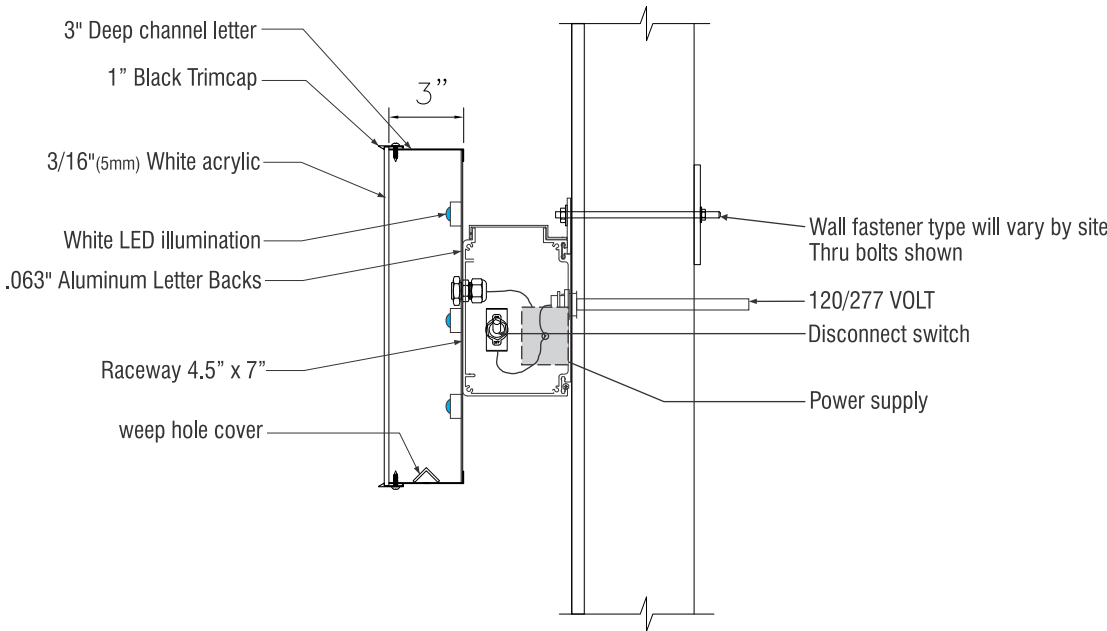
2 Side View

Scale: 3/8" = 1' (11x17 Paper)

Note: Max lengths of raceways to be no more than 10 ft. in length for shipping

SPECIFICATIONS

- A** Internally illuminated channel letters to be fabricated from .040 returns aluminum with pre-painted White interiors and pre-finished black returns. Letter backs to be aluminum stapled to sidewalls and sealed.
- B** Faces to be 3/16" White acrylic with 1" Black trimcap  
Faces to be first surface 3M Scotchcal  
#3630-76 Holly Green vinyl with white acrylic portions to show through white.
- C** Letters illuminated w/ Sloan Prism Enlighten White 6500k LED's w/ remote power supply.
- D** Letters to be installed on Raceway.
  - Qty. 1 Raceway painted to match Dri-Design prefinished Dark Bronze Aluminum (Sample required)
  - Qty. 1 Raceway painted to match General Shale Standard stacked brick, Smoke Gray Velour.



MOUNTING AND LETTER DETAIL(TYP)  
SCALE: NTS

| COLOR LEGEND |             |   |
|--------------|-------------|---|
|              | PMS/PAINT   | VINYL                                     |
|              | PMS 3425 C  | 3M 3630-76                                |
|              | RAL 7021M   | 3M 3630-22                                |
|              | PMS WHITE   | 3M 3630-20/ 7725-10<br>TRANSLUCENT OPAQUE |
|              | PMS 369 C   | NA  |
|              | REFL. WHITE | 3M 680-10                                 |



Exposed white border dimension  
provided on production patterns

| Ltr.Ht.    |
|------------|
| 22"(559mm) |

**HILTONDISPLAYS**  
125 HILLSIDE DRIVE • GREENVILLE SC 29607  
P 800 353 9132 • F 864 242 2204  
www.hiltondisplays.com

QID 17-39028

JOB NAME

Starbucks 52953

LOCATION

20 E. Wolfenberger  
Castle Rock, CO 80109

CUSTOMER CONTACT

SALESMAN / PM

Jennifer Nichols

DESIGNER

Jesse Black

DWG. DATE

02-06-18

REV. DATE / REVISION

8-13-18 / Sloan Update / GM

9-11-18 / GM

9-13-18 BS / Pylon part#

SCALE

As Noted

FILE

2018/Starbucks/Castle Rock  
CO/17-39028/SB Castle Rock  
CO 17-39028.cdr

DESIGN SPECIFICATIONS ACCEPTED BY:

|         |           |
|---------|-----------|
| EST:    | CLIENT:   |
| SLS/PM: | LANDLORD: |

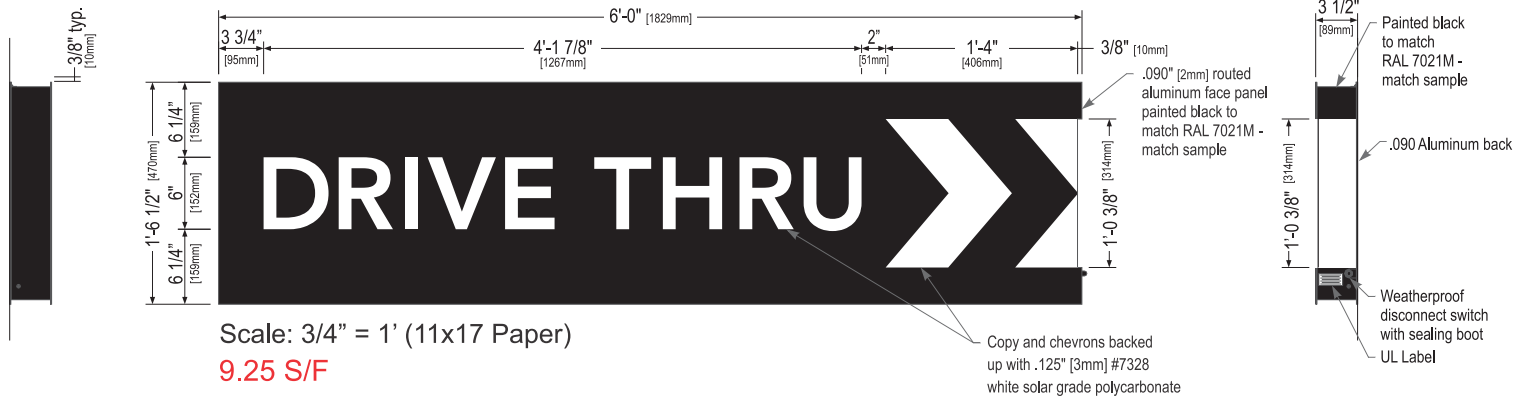
THE INTENT OF THIS DRAWING IS TO SHOW A CONCEPTUAL REPRESENTATION OF THE PROPOSED SIGNAGE. DUE TO VARIATIONS IN PRINTING DEVICES AND SUBSTRATES, THE FINISHED PRODUCT MAY DIFFER SLIGHTLY FROM DRAWING.



72” ILLUMINATED DT WALL SIGN

Qty. 4 SBC ADT-1872-RH-SL

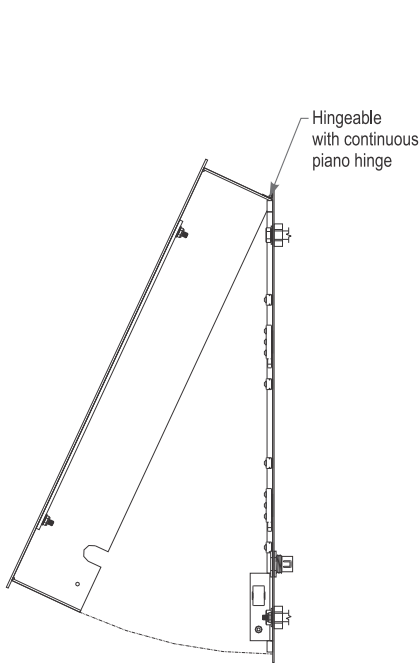
D



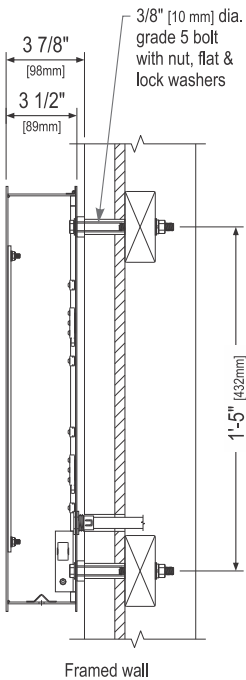
Left Side View

Front Elevation View

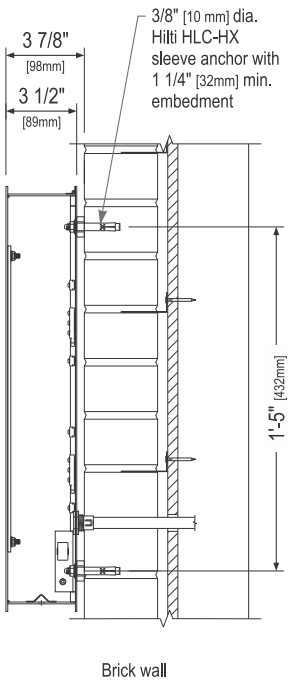
Right Side View



Service Position View  
NOT TO SCALE



Section View at Installation Detail  
NOT TO SCALE



Sign Specifications:

Cabinet:

- Fabricated .090" [2mm] aluminum housing painted black to match RAL 7021M with white end cap as shown.
- Directional copy and chevrons backed up with .125" white polycarb. All polycarb face elements to be attached to aluminum face panel with weld studs.
- Welded aluminum construction with no visible fasteners. Fasteners retaining the hinged face will be located on the bottom such that they are not visible. All fasteners used in the assembly of internal components shall be coated to prevent corrosion.
- Internal structure of cabinet shall be per approved shop drawings.
- Graphic elements are internally illuminated using Sloan Prism Enlighten LEDs. LED's to be mounted on back panel with self-contained power supply. All electrical components are removable for service.

Regulatory:

- Sign must meet all regulations in the National Electric Code as well as any local or state electrical codes.
- As per NEC 600.6, sign is equipped with a service disconnect switch.
- Sign must be listed as an Electric Sign per Underwriters Laboratories UL48 and/or CSA and bear the appropriate UL, CUL or CSA relevant certification marks.
- Primary power by electrical contractor per NEC.

| Size           | Sq. Ft. <sup>1</sup> | Sq. Ft. <sup>2</sup> | Volts   | Amps |
|----------------|----------------------|----------------------|---------|------|
| 18.50" (470mm) | 5.87                 | 9.25                 | 120/277 | 0.85 |

1: Figured as illuminated center part  
2: Figured as complete signage

**HILTONDISPLAYS**

125 HILLSIDE DRIVE • GREENVILLE SC 29607  
P 800 353 9132 • F 864 242 2204  
www.hiltondisplays.com

**QID 17-39028**

**JOB NAME**

Starbucks 52953

**LOCATION**

20 E. Wolfenberger  
Castle Rock, CO 80109

**CUSTOMER CONTACT**

**SALESMAN / PM**

Jennifer Nichols

**DESIGNER**

Jesse Black

**DWG. DATE**

02-06-18

**REV. DATE / REVISION**

8-13-18 / Sloan Update / GM

9-11-18 / GM

9-13-18 BS / Pylon part#

**SCALE**

As Noted

**FILE**

2018/Starbucks/Castle Rock  
CO/17-39028/SB Castle Rock  
CO 17-39028.cdr

**DESIGN SPECIFICATIONS ACCEPTED BY:**

|         |           |
|---------|-----------|
| EST:    | CLIENT:   |
| SLS/PM: | LANDLORD: |

THE INTENT OF THIS DRAWING IS TO SHOW A CONCEPTUAL REPRESENTATION OF THE PROPOSED SIGNAGE. DUE TO VARIATIONS IN PRINTING DEVICES AND SUBSTRATES, THE FINISHED PRODUCT MAY DIFFER SLIGHTLY FROM DRAWING.



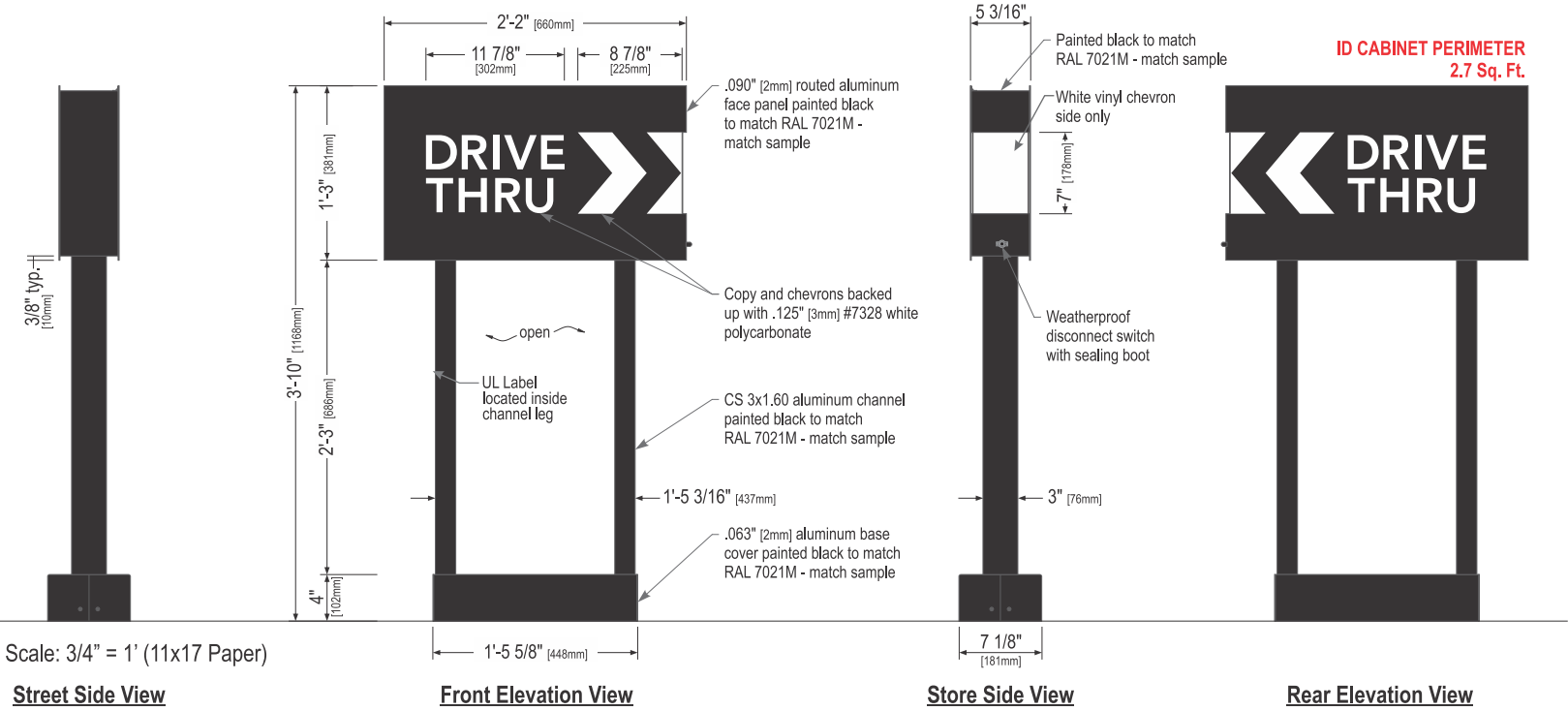
| COLOR LEGEND |             |   |
|--------------|-------------|---|
|              | PMS/PAINT   | VINYL                                     |
|              | PMS 3425 C  | 3M 3630-76                                |
|              | RAL 7021M   | 3M 3630-22                                |
|              | PMS WHITE   | 3M 3630-20/ 7725-10<br>TRANSLUCENT OPAQUE |
|              | PMS 369 C   | NA  |
|              | REFL. WHITE | 3M 680-10                                 |

46” ILLUMINATED DIRECTIONAL < DT/DT> - No Logo

SBC-S14327-SL

Qty. 1

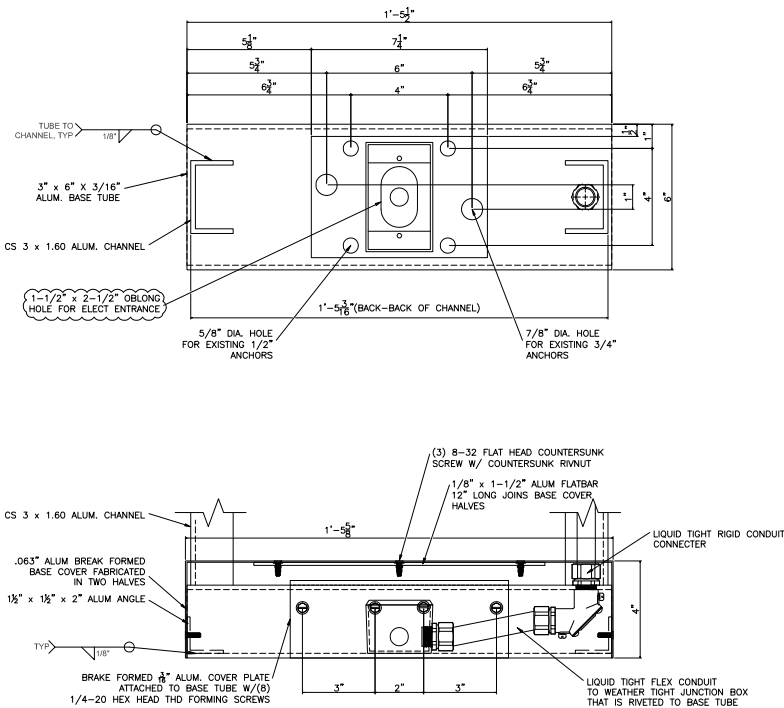
E



Sign Specifications:

- Cabinet:
- Fabricated .090" [2mm] aluminum housing painted black to match RAL 7021 with white end cap as shown.
  - Directional copy and chevrons backed up with 1/8" White polycarb. All acrylic face elements to be attached to aluminum face panel with weld studs.
  - Interior aluminum surfaces of sign cabinet to be painted white with Lacryl Starbrite.
  - Internal structure of cabinet shall be per approved shop drawings.
  - Graphic elements are internally illuminated using Sloan LED system or Starbucks approved equal. LED's to be mounted on an internal baffle with self-contained power supply. All electrical components are removable for service.

- Support:
- Supporting structure will be all welded aluminum tube and channel construction painted black to match RAL 7021 as per approved shop drawings and shall be integral to the sign cabinet.
  - Base tube will be constructed so that it can be retro-fittable to existing sign foundations. All foundations, existing and new must be analyzed for suitability and must meet all local city or state codes regulations.



| COLOR LEGEND |             |   |
|--------------|-------------|---|
|              | PMS/PAINT   | VINYL                                     |
|              | PMS 3425 C  | 3M 3630-76                                |
|              | RAL 7021M   | 3M 3630-22                                |
|              | PMS WHITE   | 3M 3630-20/ 7725-10<br>TRANSLUCENT OPAQUE |
|              | PMS 369 C   | NA  |
|              | REFL. WHITE | 3M 680-10                                 |

| Size         | Sq. Ft. <sup>1</sup> | Sq. Ft. <sup>2</sup> | Volts | Amps |
|--------------|----------------------|----------------------|-------|------|
| 46" (1168mm) | 1.09                 | 8.31                 | 120   | 0.85 |

**HILTONDISPLAYS**

125 HILLSIDE DRIVE • GREENVILLE SC 29607  
P 800 353 9132 • F 864 242 2204  
www.hiltondisplays.com

**QID 17-39028**

**JOB NAME**

Starbucks 52953

**LOCATION**

20 E. Wolfenberger  
Castle Rock, CO 80109

**CUSTOMER CONTACT**

**SALESMAN / PM**

Jennifer Nichols

**DESIGNER**

Jesse Black

**DWG. DATE**

02-06-18

**REV. DATE / REVISION**

8-13-18 / Sloan Update / GM

9-11-18 / GM

9-13-18 BS / Pylon part#

**SCALE**

As Noted

**FILE**

2018/Starbucks/Castle Rock  
CO/17-39028/SB Castle Rock  
CO 17-39028.cdr

**DESIGN SPECIFICATIONS ACCEPTED BY:**

|         |           |
|---------|-----------|
| EST:    | CLIENT:   |
| SLS/PM: | LANDLORD: |

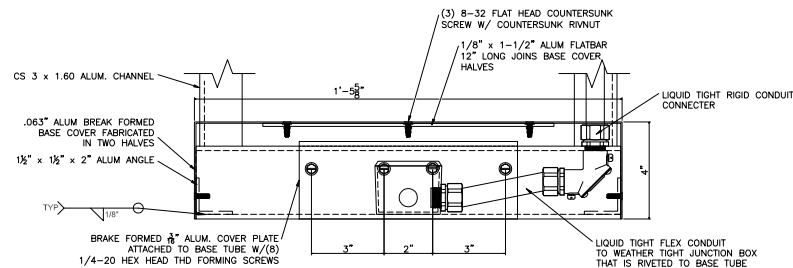
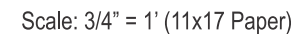
THE INTENT OF THIS DRAWING IS TO SHOW A CONCEPTUAL REPRESENTATION OF THE PROPOSED SIGNAGE. DUE TO VARIATIONS IN PRINTING DEVICES AND SUBSTRATES, THE FINISHED PRODUCT MAY DIFFER SLIGHTLY FROM DRAWING.





**F**

**F**



| Size         | Sq. Ft. <sup>1</sup> | Sq. Ft. <sup>2</sup> | Volts | Amps |
|--------------|----------------------|----------------------|-------|------|
| 46" (1168mm) | 2.60                 | 7.99                 | 120   | 0.85 |

| Size         | Sq. Ft. <sup>1</sup> | Sq. Ft. <sup>2</sup> | Volts | Amps |
|--------------|----------------------|----------------------|-------|------|
| 46" (1168mm) | 2.60                 | 7.99                 | 120   | 0.85 |

## Cabinet:

- Support:

- Regulatory:

- Sign must meet all regulations in the National Electric Code as well as any local or state electrical codes.
- As per NEC 600.6, sign is equipped with a service disconnect switch.
- Sign must be listed as an Electric Sign per Underwriters Laboratories UL48 and/or CSA and bear the appropriate UL, CUL or CSA relevant certification marks.
- Primary power by electrical contractor per NEC.

**JOB NAME**

Starbucks 52953

## LOCATION

20 E. Wolfenberger  
Castle Rock, CO 80109

## CUSTOMER CONTACT

**SALESMAN / PM**

**Jennifer Nichols**

DESIGNER

**Jesse Black**

**DWG. DATE**

02-06-18

REV. DATE / REVISION

8-13-18 / Sloan Update / GM

9-11-18 / GM

9-13-18 BS / Pylon part#

SCALE

**As Noted**

FILE

2018/Starbucks/Castle Rock  
CO/17-39028/SB Castle Rock  
CO 17-39028.cdr

DESIGN SPECIFICATIONS ACCEPTED BY:

|      |         |
|------|---------|
| EST: | CLIENT: |
|------|---------|

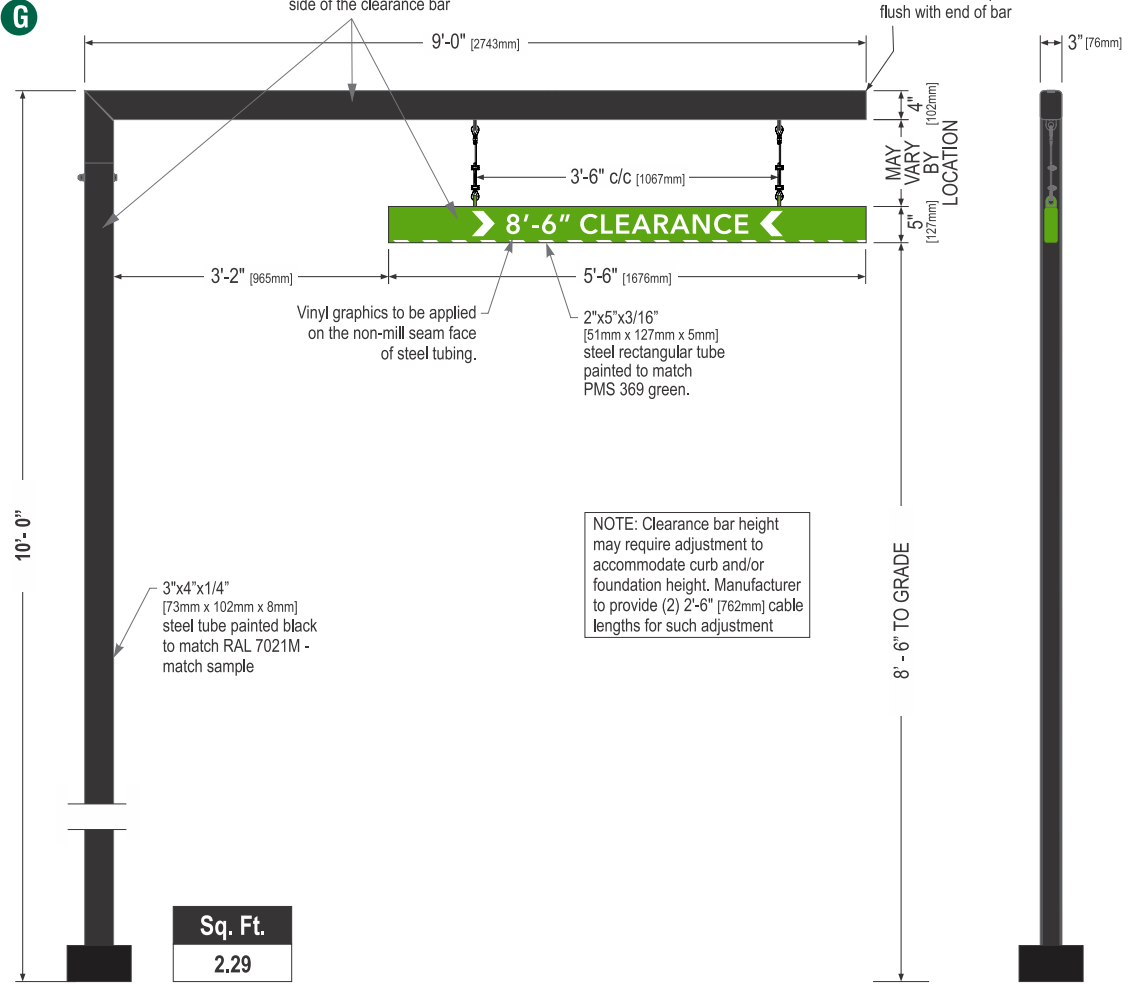
|         |           |
|---------|-----------|
| SLS/PM: | LANDLORD: |
|---------|-----------|

THE INTENT OF THIS DRAWING IS TO SHOW A CONCEPTUAL REPRESENTATION OF THE PROPOSED SIGNAGE. DUE TO VARIATIONS IN PRINTING DEVICES AND SUBSTRATES, THE FINISHED PRODUCT MAY DIFFER SLIGHTLY FROM DRAWING.



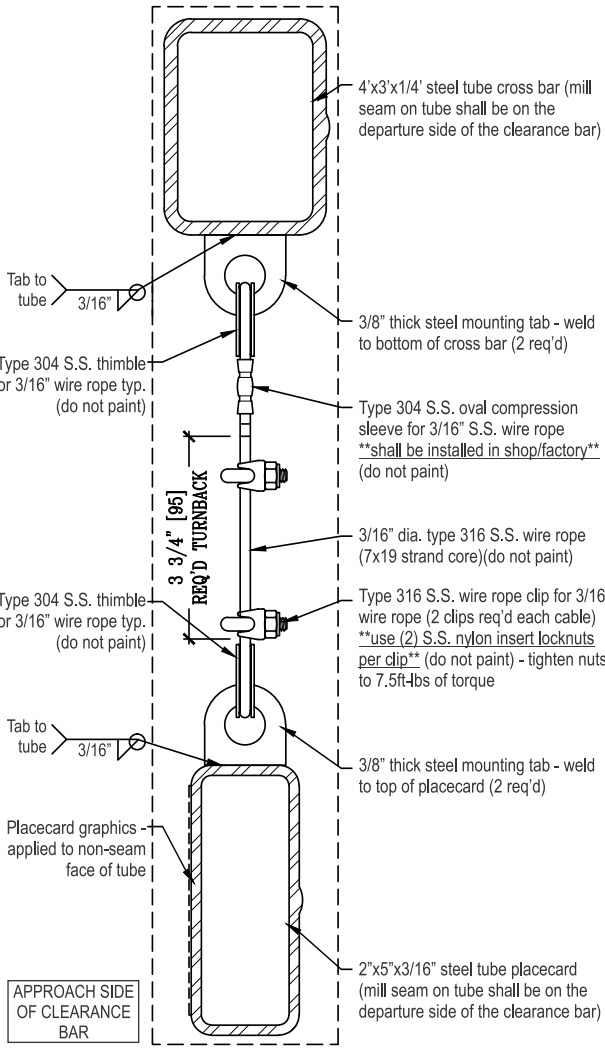
CLEARANCE BAR WITH BASE COVER SBC S14106-SHB-C-10

Qty. 1  
(Standard Wind Load)

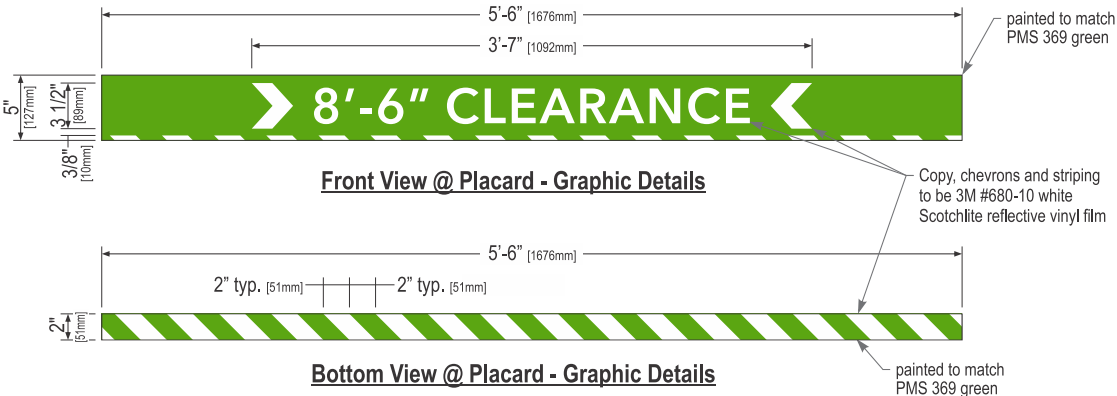


Front Elevation View

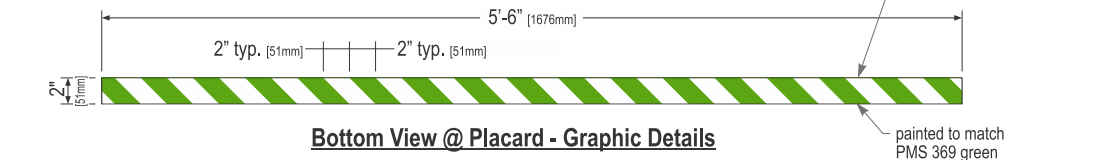
Right Side View



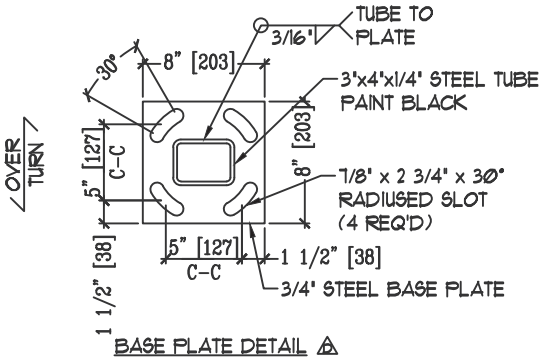
End Section View



Front View @ Placard - Graphic Details

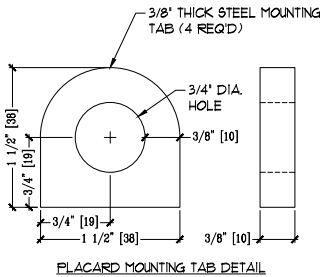


Bottom View @ Placard - Graphic Details

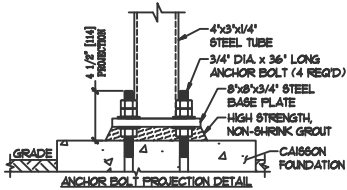


BASE PLATE DETAIL A

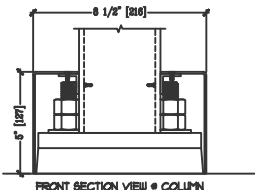
| COLOR LEGEND |             |   |
|--------------|-------------|---|
|              | PMS/PAINT   | VINYL                                     |
|              | PMS 3425 C  | 3M 3630-76                                |
|              | RAL 7021M   | 3M 3630-22                                |
|              | PMS WHITE   | 3M 3630-20/ 7725-10<br>TRANSLUCENT OPAQUE |
|              | PMS 369 C   | NA  |
|              | REFL. WHITE | 3M 680-10                                 |



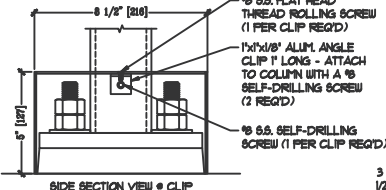
PLACARD MOUNTING TAB DETAIL



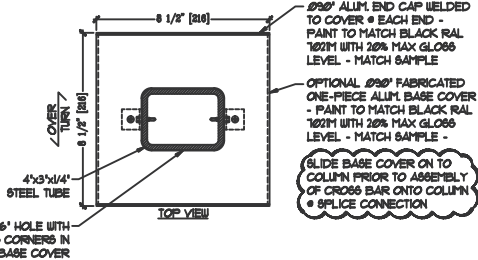
ANCHOR BOLT PROJECTION DETAIL



FRONT SECTION VIEW - COLUMN



SIDE SECTION VIEW - CLIP



TOP VIEW

Sign Specifications:

- Scraper Bar:
- 2"x5" [51mm x 127mm] steel tube painted to match PMS 369 green.
  - Flush steel end caps painted to match PMS 369 green.
  - Copy and chevrons to be 1st surface computer cut 3M #680-10 white Scotchlite reflective vinyl film.
  - Bottom striping to be 1st surface computer cut 3M #680-10 white Scotchlite reflective vinyl film. Striping extends 3/8" [10mm] onto front face.
  - Suspend from support with SS cable & hardware. Cable provided requires field adjustment for proper clearance height.

- Support:
- Supporting structure will be all welded steel tube construction painted black to match RAL 7021M as per approved shop drawings.
  - Base tube will be constructed so that it can be retro-fittable to existing sign foundations. All foundations, existing and new must be analyzed for suitability and must meet all local city or state codes regulations.

**HILTONDISPLAYS**  
125 HILLSIDE DRIVE • GREENVILLE SC 29607  
P 800 353 9132 • F 864 242 2204  
www.hiltondisplays.com

**QID 17-39028**

**JOB NAME**

**Starbucks 52953**

**LOCATION**

**20 E. Wolfenberger  
Castle Rock, CO 80109**

**CUSTOMER CONTACT**

**SALESMAN / PM**

**Jennifer Nichols**

**DESIGNER**

**Jesse Black**

**DWG. DATE**

**02-06-18**

**REV. DATE / REVISION**

**8-13-18 / Sloan Update / GM**

**9-11-18 / GM**

**9-13-18 BS / Pylon part#**

**SCALE**

**As Noted**

**FILE**

**2018/Starbucks/Castle Rock  
CO/17-39028/SB Castle Rock  
CO 17-39028.cdr**

**DESIGN SPECIFICATIONS ACCEPTED BY:**

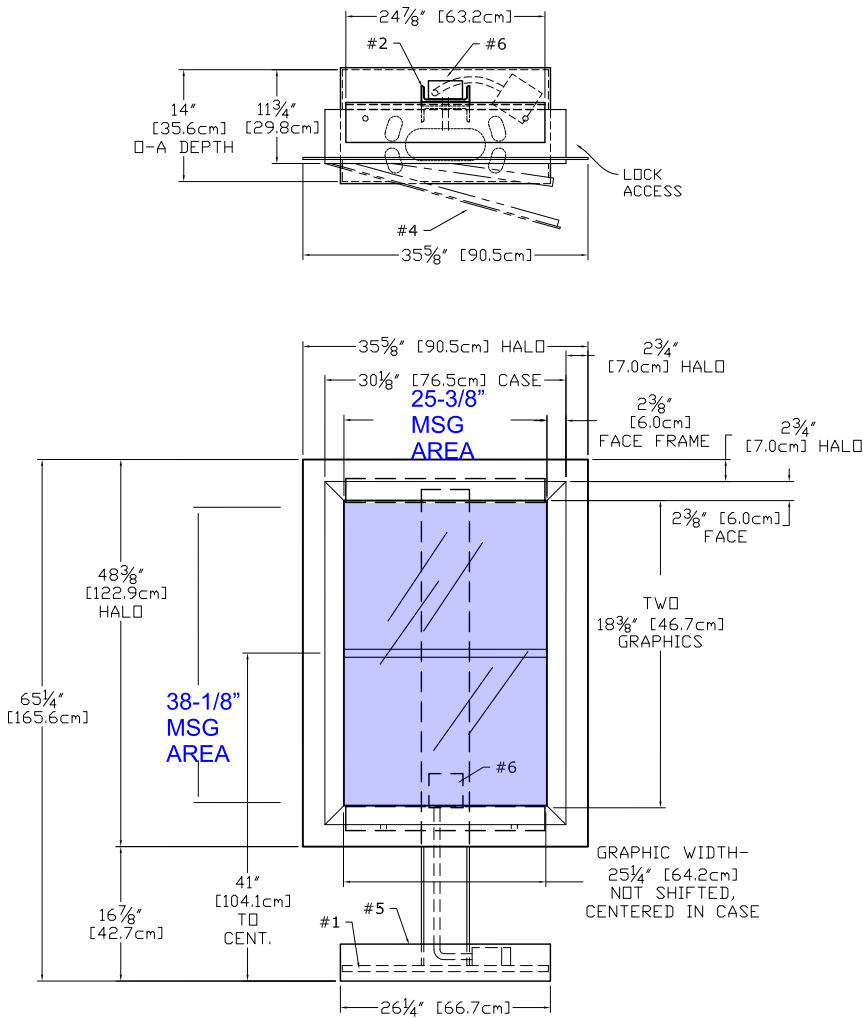
|         |           |
|---------|-----------|
| EST:    | CLIENT:   |
| SLS/PM: | LANDLORD: |

THE INTENT OF THIS DRAWING IS TO SHOW A CONCEPTUAL REPRESENTATION OF THE PROPOSED SIGNAGE. DUE TO VARIATIONS IN PRINTING DEVICES AND SUBSTRATES, THE FINISHED PRODUCT MAY DIFFER SLIGHTLY FROM DRAWING.



PRE-MENU BOARD - FREESTANDING

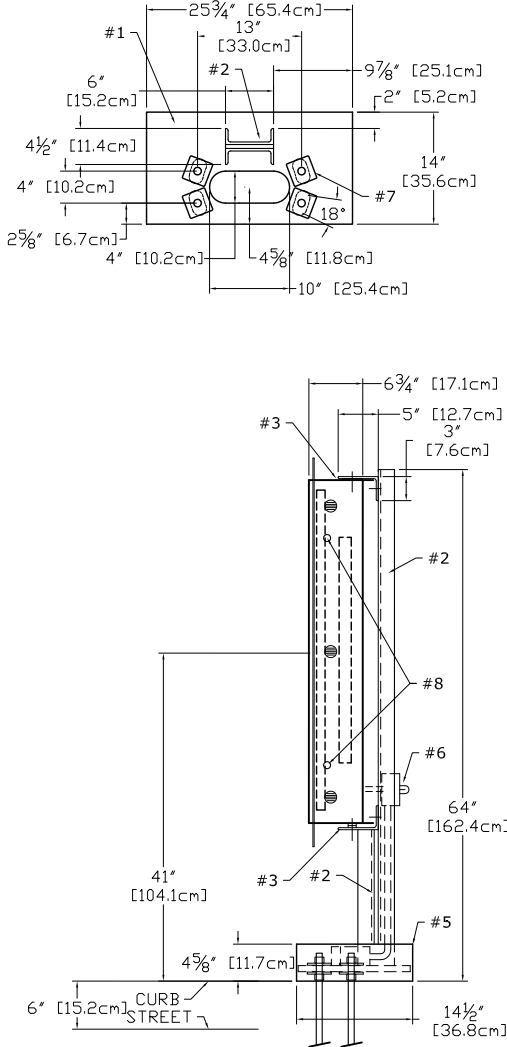
Qty. 1



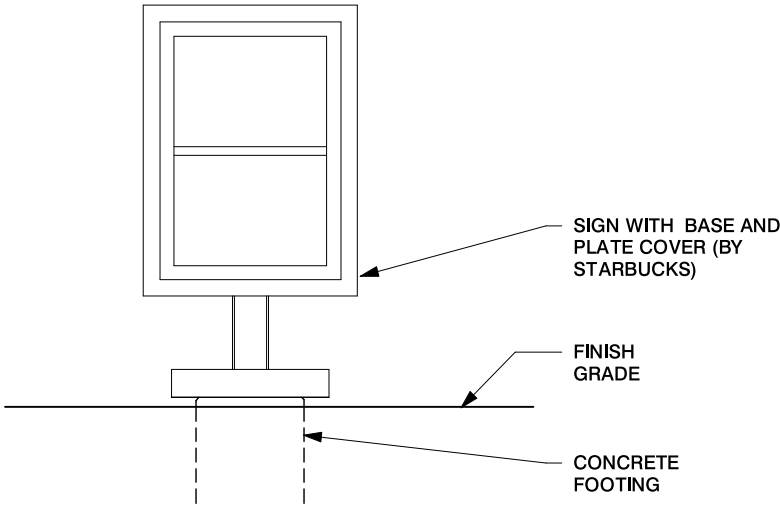
MESSAGE AREA = (25.375 \* 38.125) / 144 = 6.72 SQ FT

DTE - PRE-MENU FREESTANDING

Scale: 1/2" = 1' (11x17 paper)



- #1 - 3/4" [19mm] STEEL BASE PLATE w/ 18deg HOLES PATTERN LEFT SQUARE / SYMETRICAL
- #2 - C6X10.5 (6"x2"x5/16") STEEL POST (1x)
- #3 - 5"x3"x1/4" STEEL SUPPORT ANGLES (2x) (WELDED TO STEEL POST)
- #4 - EXTRUDED ALUMINUM MENU BOARD (1x) ONE SPLIT PANEL LIGHTBOX TWO 25 1/4"x18 3/8" GRAPHICS GRAPHIC ASSEMBLY CENTERED, NOT SHIFTED STANDARD LED TUBE LIGHTING, SIDE LOCKS
- #5 - WELDED ALUMINUM BASE COVER
- #6 - WATER-TIGHT BOX w/SWITCHES & SENSOR, RIDGID CONDUIT RUN TO SECOND EXT BOX BELOW BASE COVER, 120 WATT, 0.30Aac
- #7 - 8 BASE WASHERS, 1/4" THICK
- #8 - TWO SIDE MOUNT LOCKS, RETAIN EXISTING KEY #E3-26-819-15



DTE - PRE-MENU FREESTANDING

Scale: 3/8" = 1' (11x17 paper)

**HILTONDISPLAYS**  
125 HILLSIDE DRIVE • GREENVILLE SC 29607  
P 800 353 9132 • F 864 242 2204  
www.hiltondisplays.com

**QID 17-39028**

**JOB NAME**

Starbucks 52953

**LOCATION**

20 E. Wolfenberger  
Castle Rock, CO 80109

**CUSTOMER CONTACT**

**SALESMAN / PM**

Jennifer Nichols

**DESIGNER**

Jesse Black

**DWG. DATE**

02-06-18

**REV. DATE / REVISION**

8-13-18 / Sloan Update / GM

9-11-18 / GM

9-13-18 BS / Pylon part#

**SCALE**

As Noted

**FILE**

2018/Starbucks/Castle Rock  
CO/17-39028/SB Castle Rock  
CO 17-39028.cdr

**DESIGN SPECIFICATIONS ACCEPTED BY:**

|         |           |
|---------|-----------|
| EST:    | CLIENT:   |
| SLS/PM: | LANDLORD: |

THE INTENT OF THIS DRAWING IS TO SHOW A CONCEPTUAL REPRESENTATION OF THE PROPOSED SIGNAGE. DUE TO VARIATIONS IN PRINTING DEVICES AND SUBSTRATES, THE FINISHED PRODUCT MAY DIFFER SLIGHTLY FROM DRAWING.

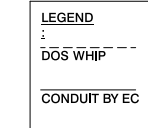
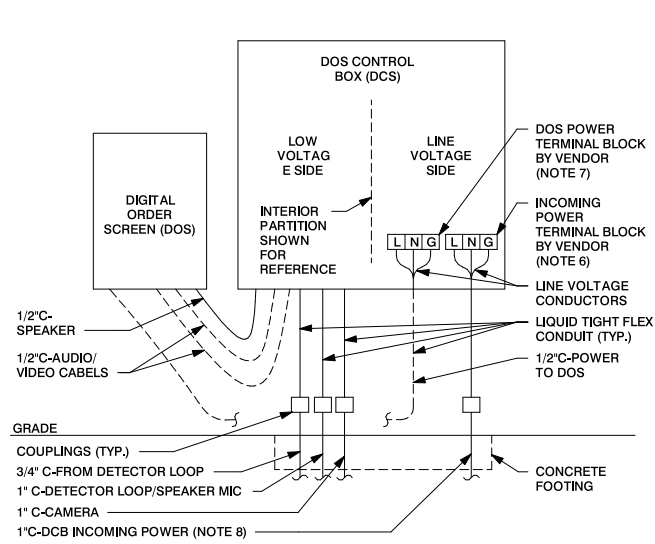




DOS ON CANOPY - DCB ON UNISTRUT

Qty. 1

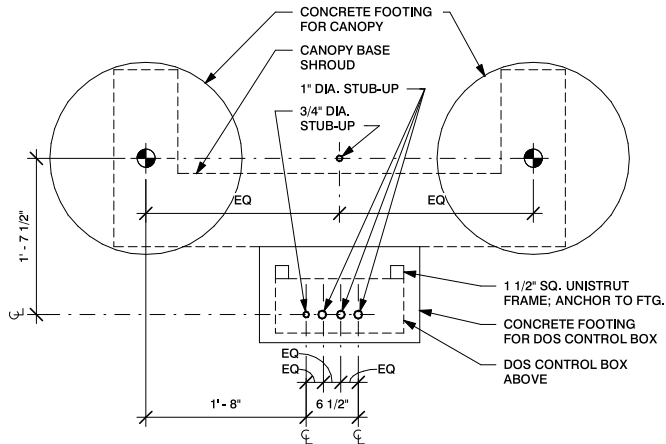
1



- NOTES:
1. ALL SHOWN SHALL BE INSTALLED PER THIS DETAIL, CODE AND MANUFACTURER'S INSTRUCTIONS.
  2. CONFIRM MOUNTING POSITIONS OF ALL DEVICES SHOWN WITH GC AND VENDOR.
  3. EC TO PROVIDE, INSTALL AND CONNECT ALL LINE VOLTAGE CONDUCTORS.
  4. EC TO CONNECT DEDICATED POWER BETWEEN DOS AND DCB. DCB VENDOR TO CONNECT ALL LOW VOLTAGE CABLING, INCLUDING DOS WHIPS TO DCB.
  5. TERMINATE INCOMING POWER ON TERMINAL BLOCKS LABELED INCOMING DEDICATED POWER.
  7. TERMINATE POWER TO DOS ON TERMINAL BLOCKS LABELED DOS DEDICATED POWER.
  8. POWER TO DCB SHALL BE INDIVIDUAL BRANCH CIRCUIT IN DEDICATED CONDUIT (I.E. NOT BE ON EMS OR LIGHTING CONTROL).

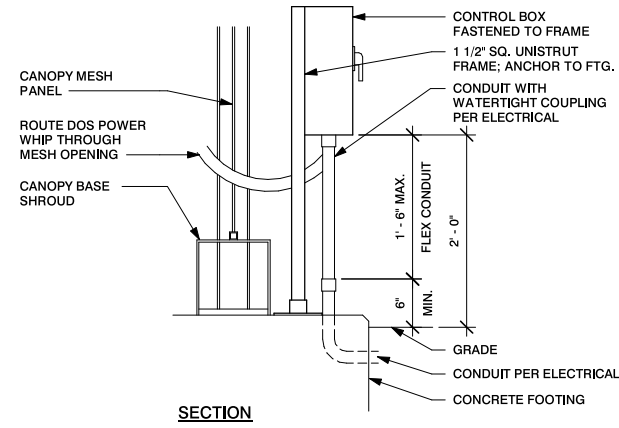
DTE - DOS CONTROL BOX WIRING

Scale: 1/2" = 1' (11x17 paper)



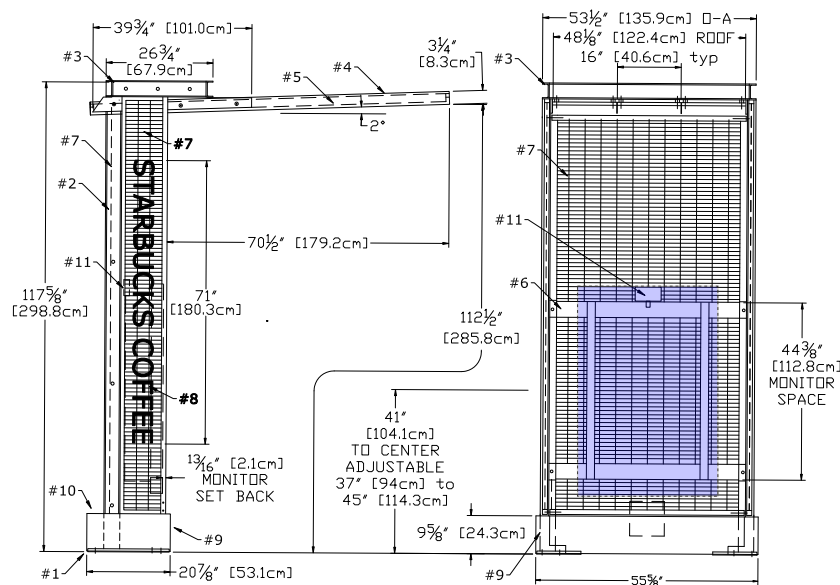
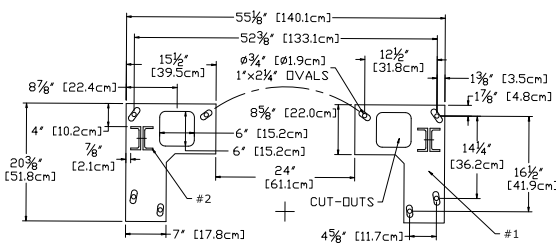
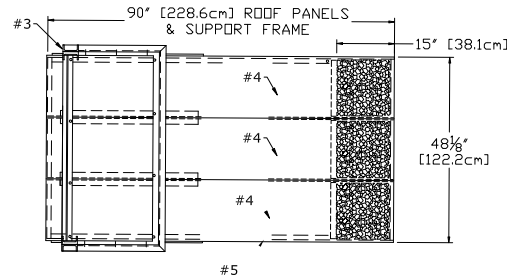
DTE - DOS CONTROL BOX CONDUIT STUB-UPS AT CANOPY

Scale: 1/2" = 1' (11x17 paper)



DTE - DOS CONTROL BOX AT CANOPY

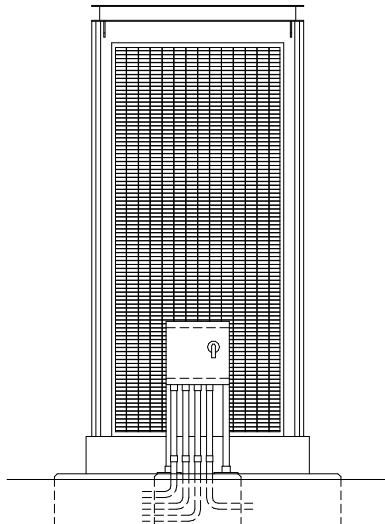
Scale: 1/2" = 1' (11x17 paper)



- #1 - TWO - 3/4" [19mm] STEEL BASE PLATES w/ OVAL HOLES FOR SWIVEL/POSITION 16 - 1/4" WASHERS SUPPLIED
- #2 - TWO - BACK TO BACK C4X7.25 (4"x1 3/4"x5 1/16") STEEL POSTS
- #3 - WELDED ALUMINUM HEADER, C4"x1.58" CHANNEL
- #4 - THREE - ALUMINUM ROOF PANELS SEAMLESS RAISED SIDE EDGES 15" OF LASERED PATTERN W/ DRIP EDGE BEHIND
- #5 - WELDED STEEL PERIMETER ROOF FRAME
- #6 - WELDED 3/16" STEEL [5mm] MONITOR SUPPORT FRAME WITH HGT ADJUSTMENT
- #7 - WELDED STEEL 1" [25.4mm] O-C WIRE GRID BACK & SIDE PANELS IN WELDED RECTANGULAR STEEL TUBE FRAMES
- #8 - 4" x 1 1/2" [11.3cm x 12.7mm] WHITE ACRYLIC LETTERS. FIXED TO LH GRID PANEL w/ANTI-TAMPER SCREWS
- #9 - WELDED ALUMINUM BASE COVERS
- #10 - WELDED ALUMINUM WATER-TIGHT ELECTRIC ENCLOSURE (REAR HATCH)
- #11 - LED CEILING FLOODLIGHT, WIRED COMPLETE

DTE - CANOPY

Scale: 1/4" = 1' (11x17 paper)



HILTONDISPLAYS

125 HILLSIDE DRIVE • GREENVILLE SC 29607  
P 800 353 9132 • F 864 242 2204  
www.hiltondisplays.com

QID 17-39028

JOB NAME

Starbucks 52953

LOCATION

20 E. Wolfenberger  
Castle Rock, CO 80109

CUSTOMER CONTACT

SALESMAN / PM

Jennifer Nichols

DESIGNER

Jesse Black

DWG. DATE

02-06-18

REV. DATE / REVISION

8-13-18 / Sloan Update / GM

9-11-18 / GM

9-13-18 BS / Pylon part#

SCALE

As Noted

FILE

2018/Starbucks/Castle Rock  
CO/17-39028/SB Castle Rock  
CO 17-39028.cdr

DESIGN SPECIFICATIONS ACCEPTED BY:

|         |           |
|---------|-----------|
| EST:    | CLIENT:   |
| SLS/PM: | LANDLORD: |

THE INTENT OF THIS DRAWING IS TO SHOW A CONCEPTUAL REPRESENTATION OF THE PROPOSED SIGNAGE. DUE TO VARIATIONS IN PRINTING DEVICES AND SUBSTRATES, THE FINISHED PRODUCT MAY DIFFER SLIGHTLY FROM DRAWING.

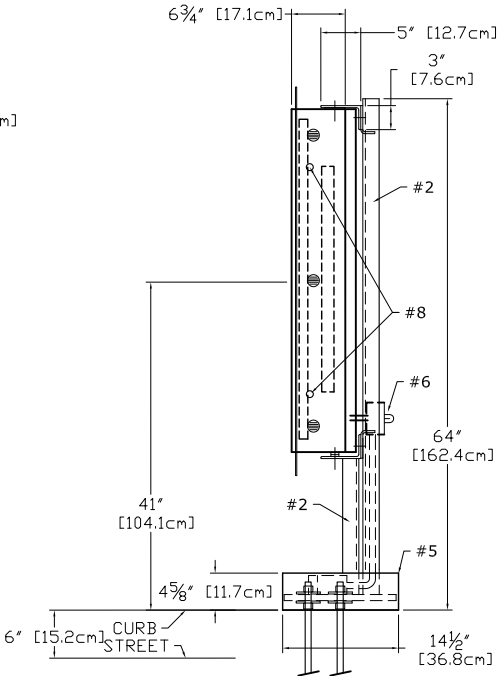
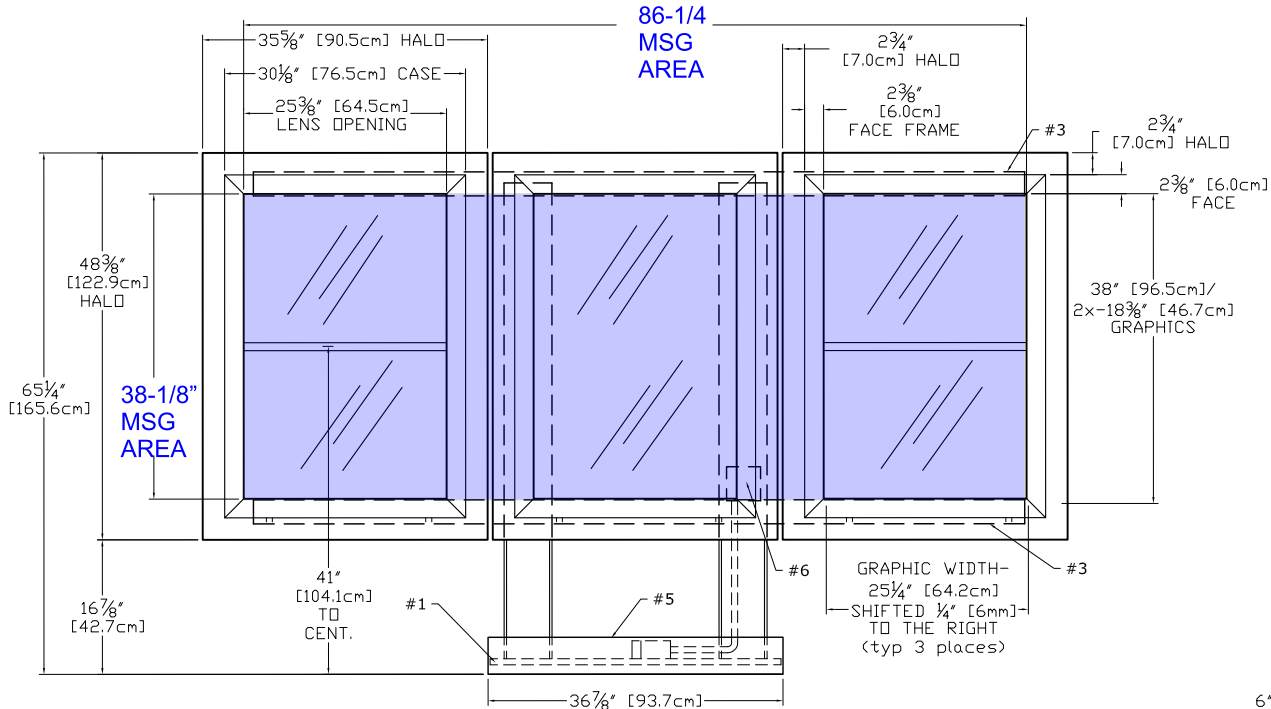
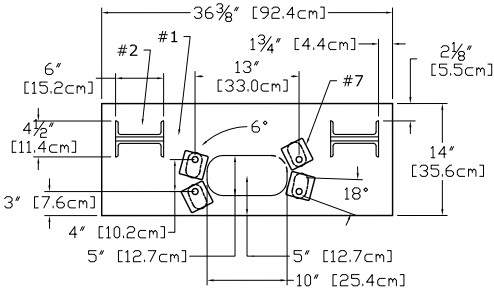
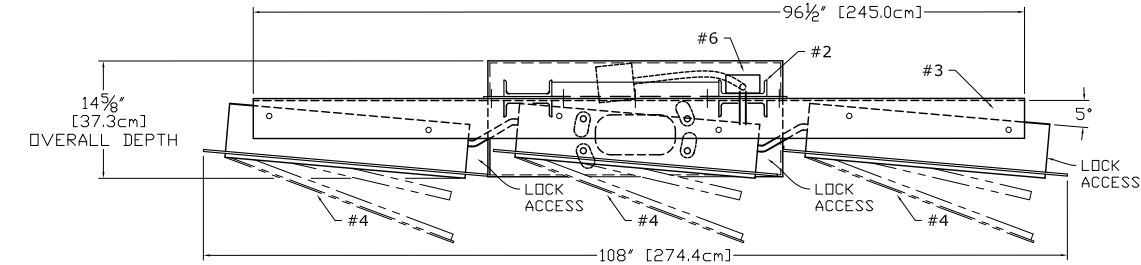




5-PANEL MENU - FREESTANDING

Qty. 1

J

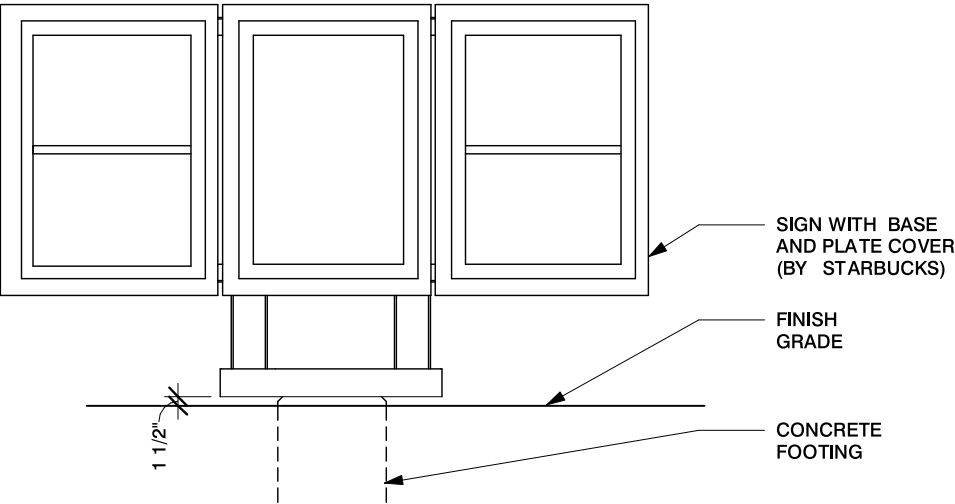


- #1 - 3/4" [19mm] STEEL BASE PLATE w/ 18deg HOLES PATTERN ROTATED FOR 15deg THRU 3deg POSITION
- #2 - C6X10.5 (6"x2"x5/16") STEEL POST (2x)
- #3 - 5"x3"x1/4" STEEL SUPPORT ANGLES (2x) (BOLTED TO WELDED 1/4" STEEL CROSSBARS)
- #4 - EXTRUDED ALUMINUM MENU BOARDS (3x) ONE FULL AND TWO SPLIT PANEL LIGHTBOXES ONE - 25 1/4"x38" AND FOUR 25 1/4"x18 3/8" GRAPHICS ALL GRAPHIC ASSEMBLIES SHIFTED 1/4" TO RIGHT STANDARD LED TUBE LIGHTING, SIDE LOCKS
- #5 - WELDED ALUMINUM BASE COVER
- #6 - WATER-TIGHT BOX w/SWITCH & SENSOR, RIDGID CONDUIT RUN TO SECOND EXT BOX BELOW BASE COVER, 120 WATT, 0.90Aac
- #7 - 8 BASE WASHERS, 1/4" THICK
- #8 - TWO SIDE MOUNT LOCKS per MENUBOARD RETAIN EXISTING KEY #E3-26-819-15

MESSAGE AREA = (86.25 \* 38.125) / 144 = 22.9 SQ FT

DTE - MENU 5 PANEL FREESTANDING

Scale: 1/2" = 1' (11x17 paper)



DTE - MENU 5 PANEL FREESTANDING

Scale: 3/8" = 1' (11x17 paper)

**HILTONDISPLAYS**  
125 HILLSIDE DRIVE • GREENVILLE SC 29607  
P 800 353 9132 • F 864 242 2204  
www.hiltondisplays.com

**QID 17-39028**

**JOB NAME**

Starbucks 52953

**LOCATION**

20 E. Wolfenberger  
Castle Rock, CO 80109

**CUSTOMER CONTACT**

**SALESMAN / PM**

Jennifer Nichols

**DESIGNER**

Jesse Black

**DWG. DATE**

02-06-18

**REV. DATE / REVISION**

8-13-18 / Sloan Update / GM

9-11-18 / GM

9-13-18 BS / Pylon part#

**SCALE**

As Noted

**FILE**

2018/Starbucks/Castle Rock  
CO/17-39028/SB Castle Rock  
CO 17-39028.cdr

**DESIGN SPECIFICATIONS ACCEPTED BY:**

|         |           |
|---------|-----------|
| EST:    | CLIENT:   |
| SLS/PM: | LANDLORD: |

THE INTENT OF THIS DRAWING IS TO SHOW A CONCEPTUAL REPRESENTATION OF THE PROPOSED SIGNAGE. DUE TO VARIATIONS IN PRINTING DEVICES AND SUBSTRATES, THE FINISHED PRODUCT MAY DIFFER SLIGHTLY FROM DRAWING.

