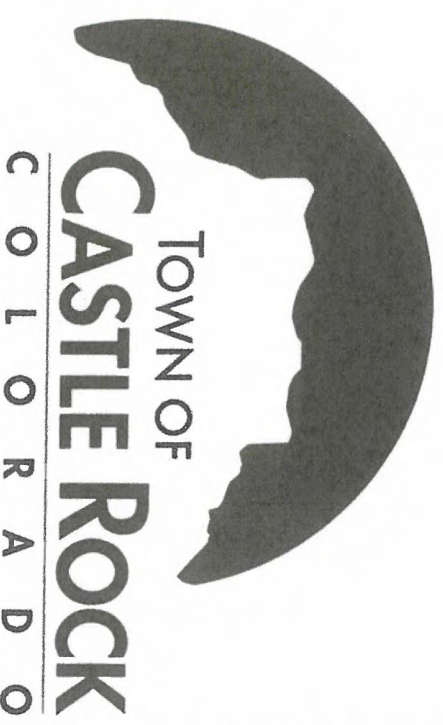


Castle Rock Rhynolite Tour - 2018

Tour sponsored by the Castle Rock Historical Society and Museum

Tour Guide Book Sponsored by the Castle Rock Historic Preservation Board

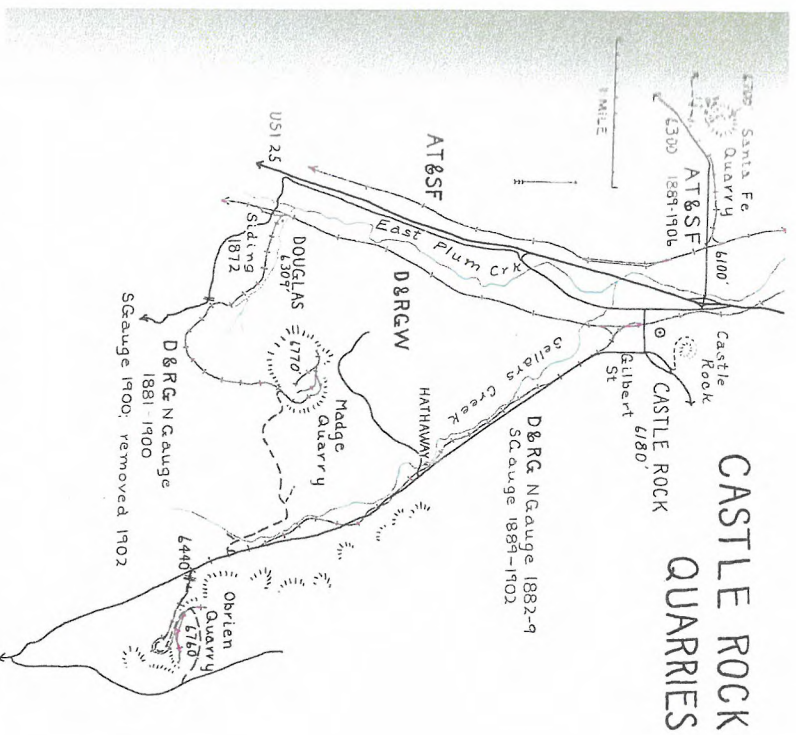


Castle Rock Rhyolite Formation



In as little as fifteen minutes a cloud of superheated volcanic ash was deposited in the Front Range area from an explosion in the Rocky Mountains near Mt. Princeton. The ash welds as soon as it hits the ground with deposits about 20 feet thick. Although much eroded away, many mesa tops remain.

Artist Rendition from the Denver Museum of Nature and Science



The remains of a continuous river of lava surround Castle Rock. The beautiful grey and pink variegated stone was shipped throughout the Rocky Mountain region. Map from Ormes' Tracking Ghost Railroads

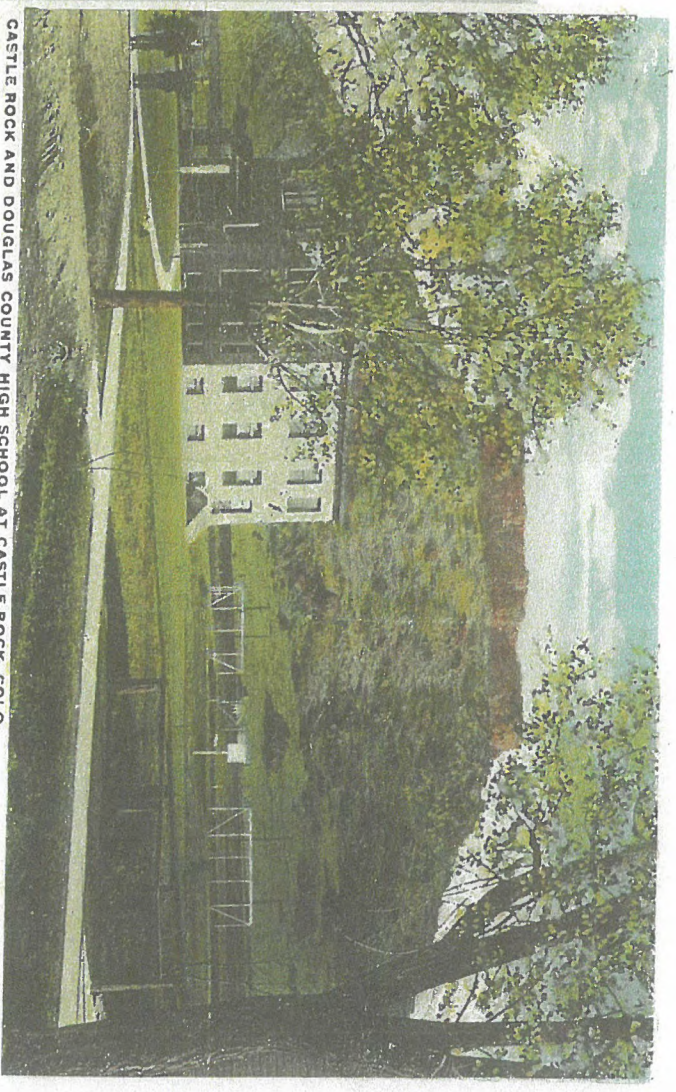


Workers at an early Castle Rock Quarry. In its heyday up to 10 railroad carloads could be shipped per day. The first quarry was the Madge Quarry now Rhyolite Park.

Victoria's House - 1889
Chamber of Commerce - 1992



Victoria and Thorwald Christensen on the porch of their house at 420 Jerry St with children, Willard, Raymond & Milton - c.1923



CASTLE ROCK AND DOUGLAS COUNTY HIGH SCHOOL AT CASTLE ROCK, COLO.

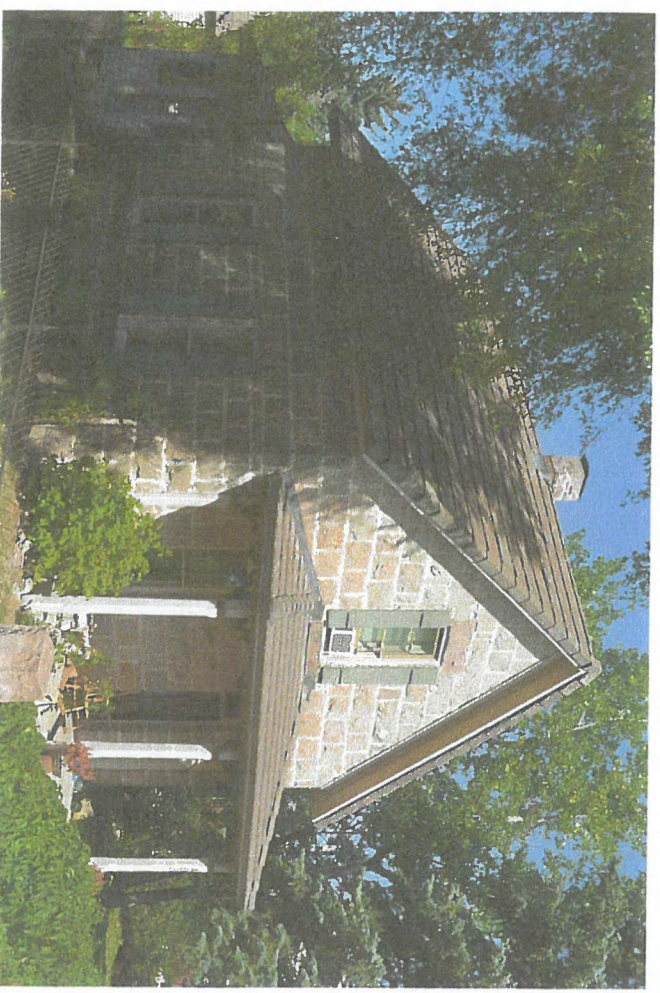
Douglas County High School built in 1911, after the one built in 1909 burned down. Now expanded and covered in brick on three sides, It is the Douglas County School District Headquarters. Rhyolite is still visible on the east side of the building.

The Maples



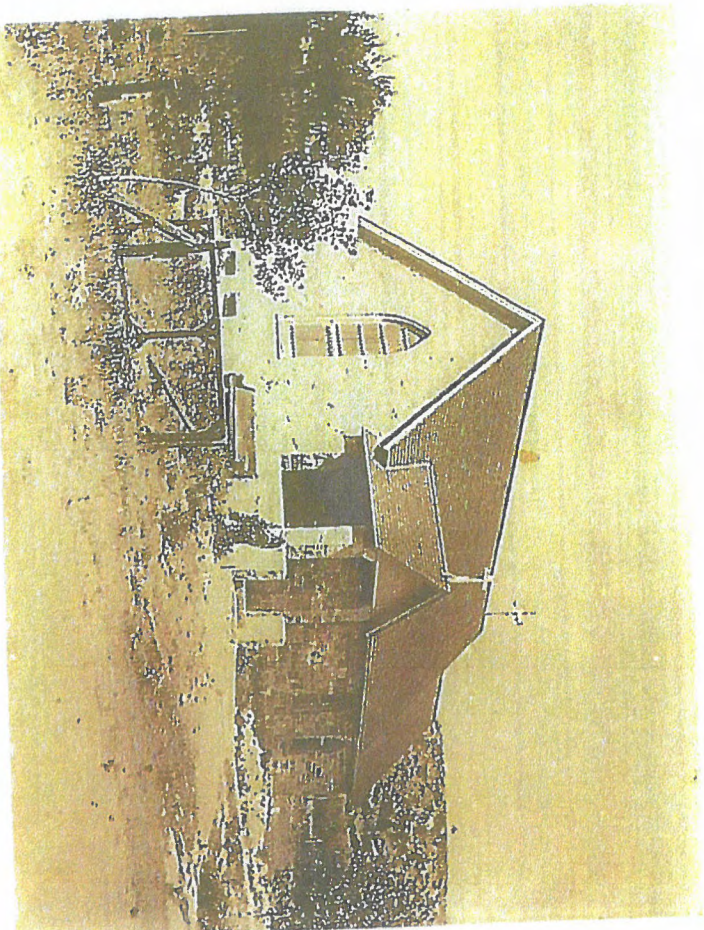
1902 - George P. Stewart House, gave the "Rock" to Castle Rock, also owned the Santa Fe Quarry. He loved to look at the Rock from his dining room.

Upton Treat Smith House



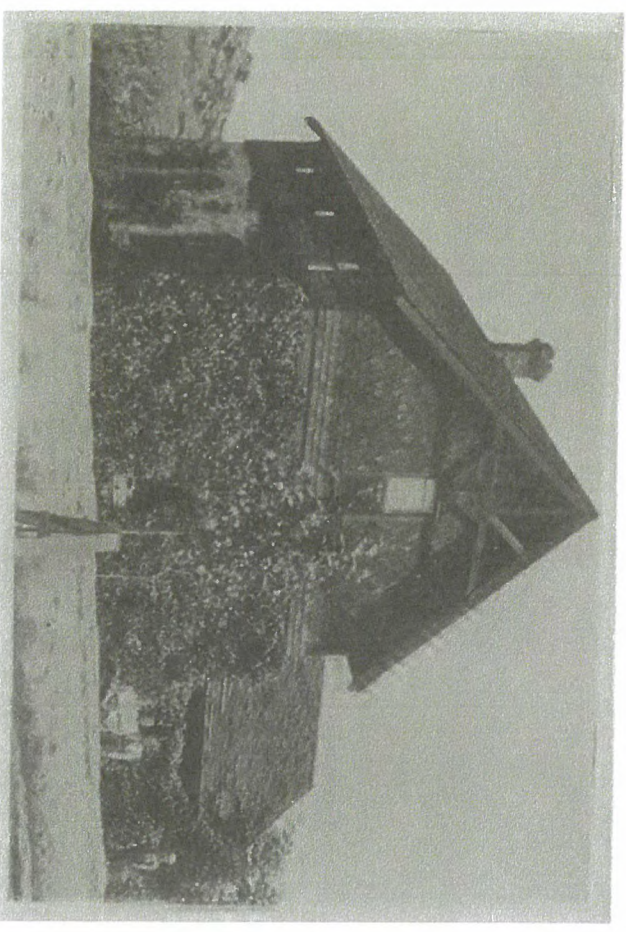
1902 - Built by gold hunter and homesteader Upton Treat Smith from Maine. Later County Treasurer and banker.

Christ's Episcopal Church



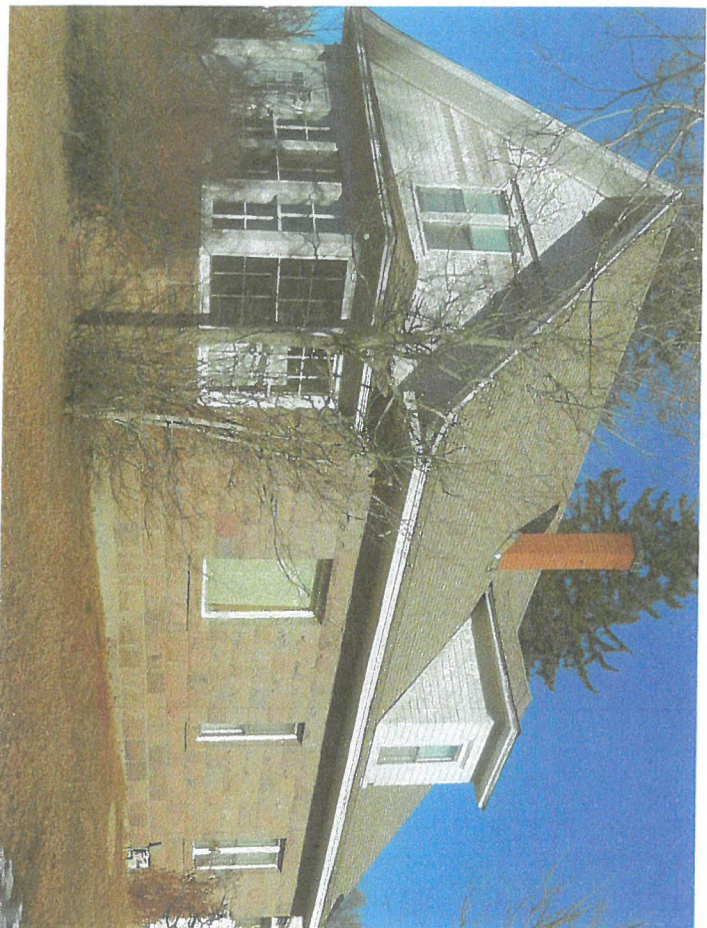
1906 - Built by immigrants from England and Wales. Parishioners added a sanctuary, vestibule and bell tower to the original structure.

Ball House



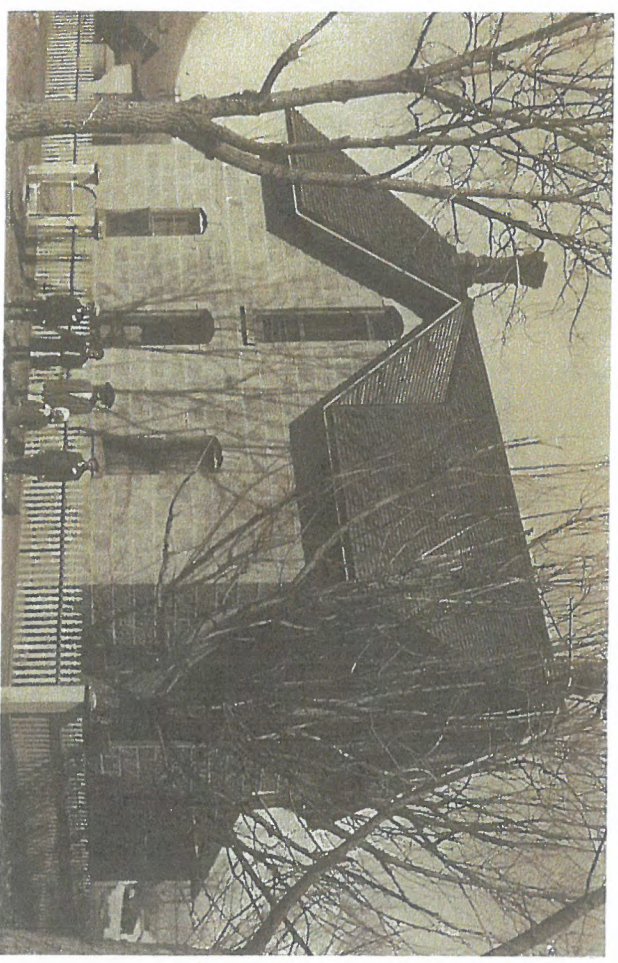
c. 1885 - Frank Ball was the county school superintendent who worked with Cole Briscoe to pass law establishing high schools in every Colorado county.

Doecke House



1904 - This house was built next to the railroad siding that serviced the Hathaway and O'Brien Quarries on Lake Gulch Road. It also has a rhyolite carriage house with hayloft.

Hammar House



1881 - Built by Benjamin Hammar, a stone mason and homesteader. It was later owned by Dr. George Alexander and used as his home and office. He was in practice for 62 years.

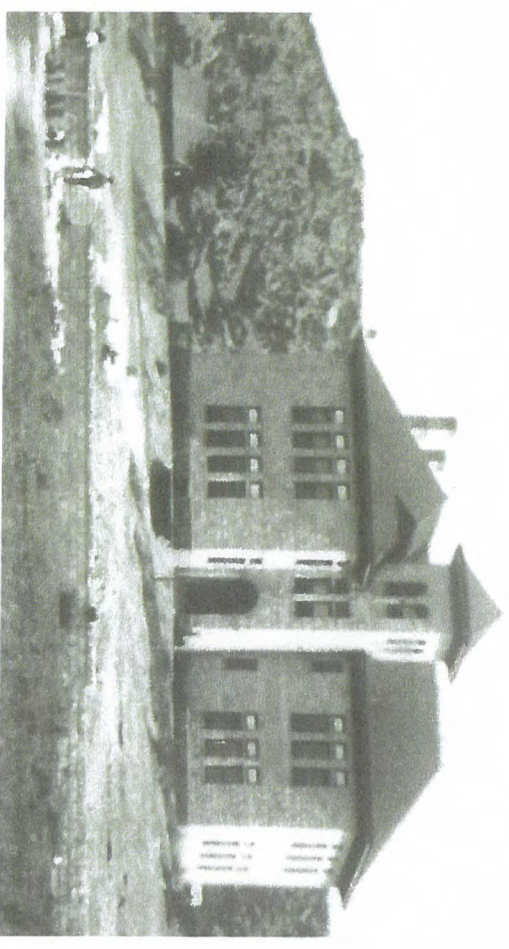
Dyer House Ice House



Dyer House Cornerstone
- July 1875

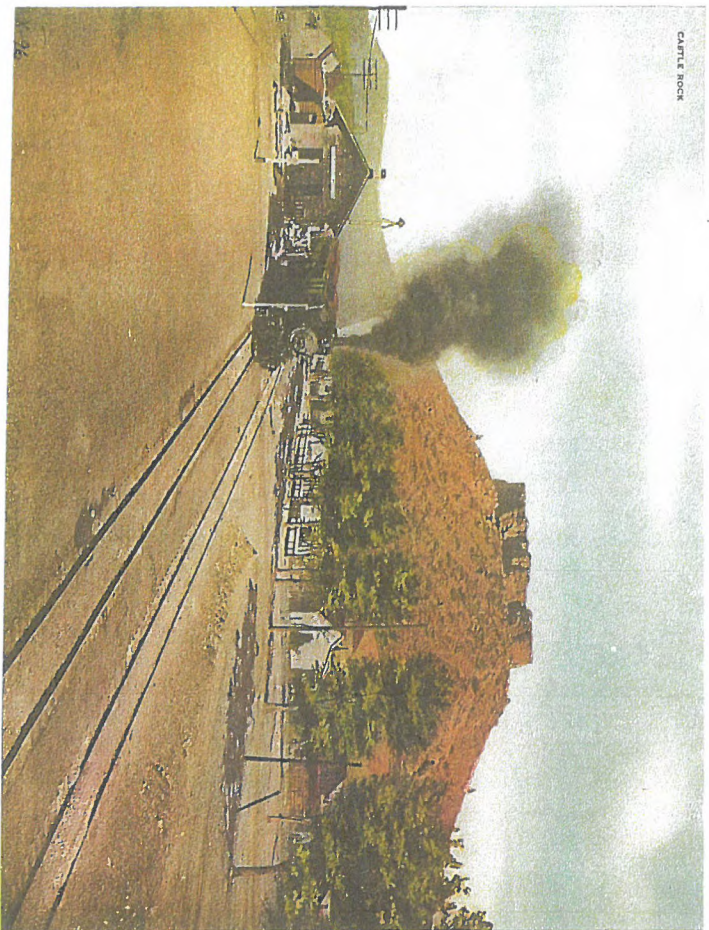


Cantril School



1897 - Built in 8 months after the first wooden school burned. It offered grades 1 to 12 until a separate high school was built on Wilcox St. It was patterned after the rhyolite courthouse which burned in 1978.

Denver & Rio Grande Depot

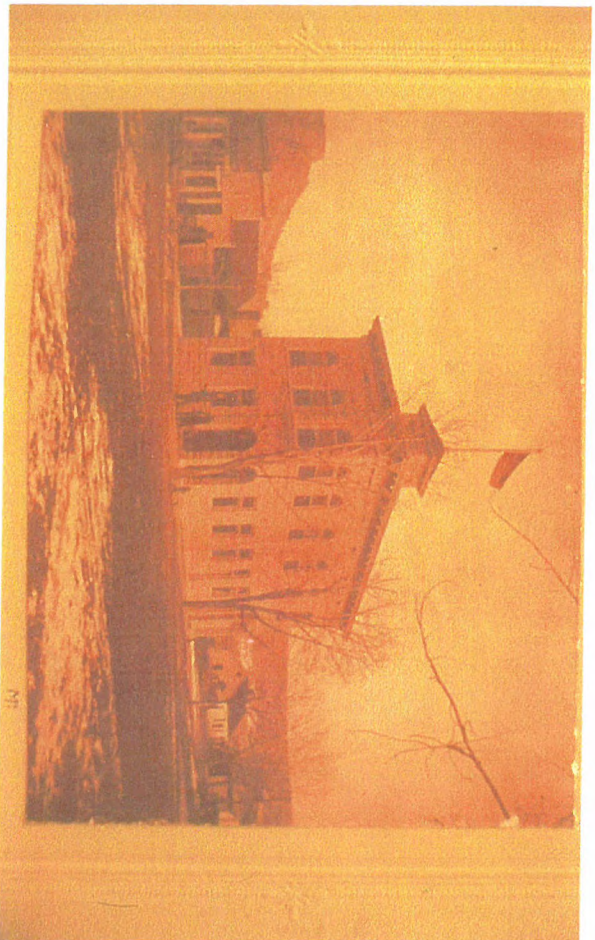


1875 - Depot in its original location at 3rd and Front St. Photograph from a 1914 Postcard.



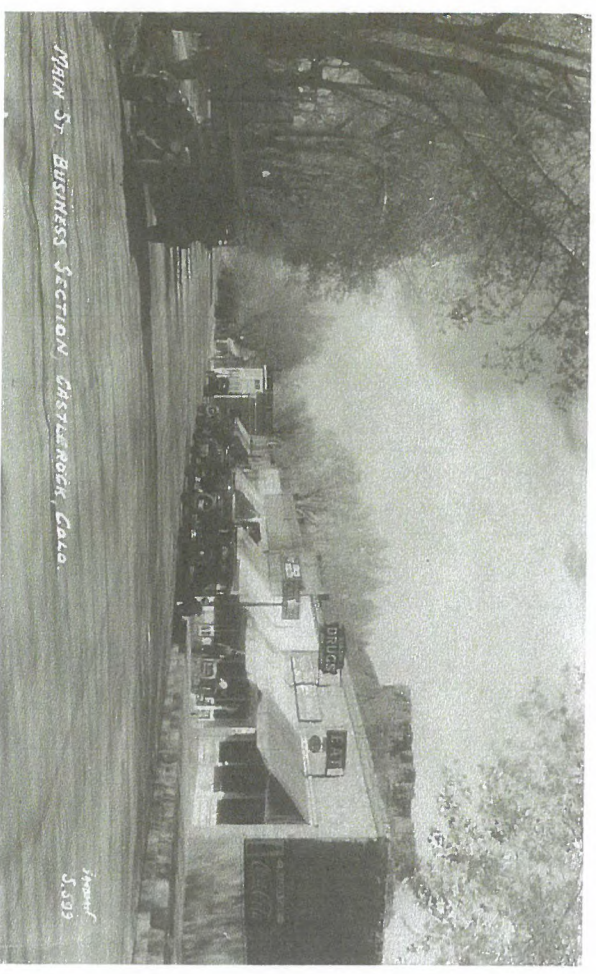
Circa 1965-69 - Closed depot before it was moved.

1st National Bank of DC



1904 - First National Bank of Douglas County. It was closed in 1933 during the Depression. It became the Masonic Lodge in 1937.

Courthouse Cafe



c.1923 - The Cafe used to feed the prisoners from the Courthouse and installed the 1st electric sign, "EAT". Later became the Sportsman's Bar & Lisa, Lisa.

Stone Courthouse

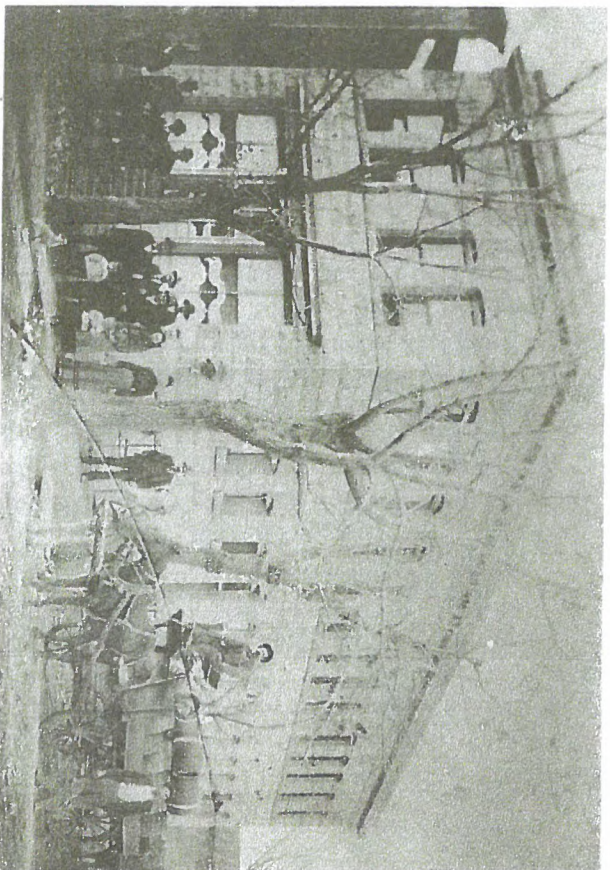


1889 - Douglas County Courthouse built of rhyolite. It was also the site of the county jail. It was placed on the National Register of Historic Places in the 1970s



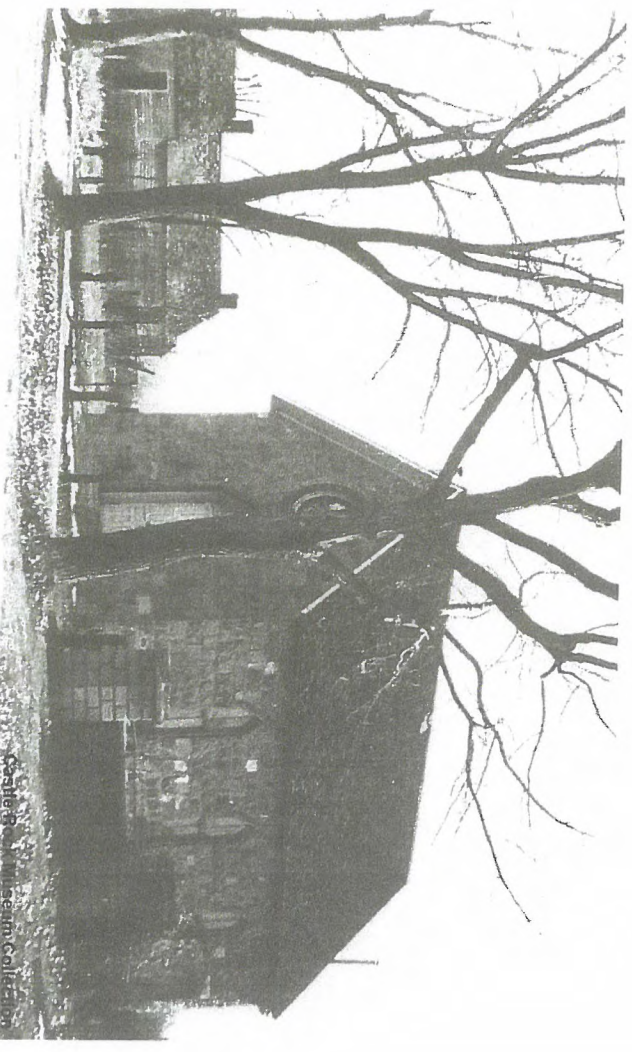
The courthouse was destroyed by an arson fire in 1978.

Keystone Hotel



1904-1910 The first building was built in 1904. Later the building was expanded with a large addition. A restaurant, bar, shops and living quarters have remained the primary uses of the building

St. Francis Church



1888-89 St. Francis Church was the first Catholic in Castle Rock. The parish moved to a larger building in 1966. The old church was converted to a restaurant in 1975.