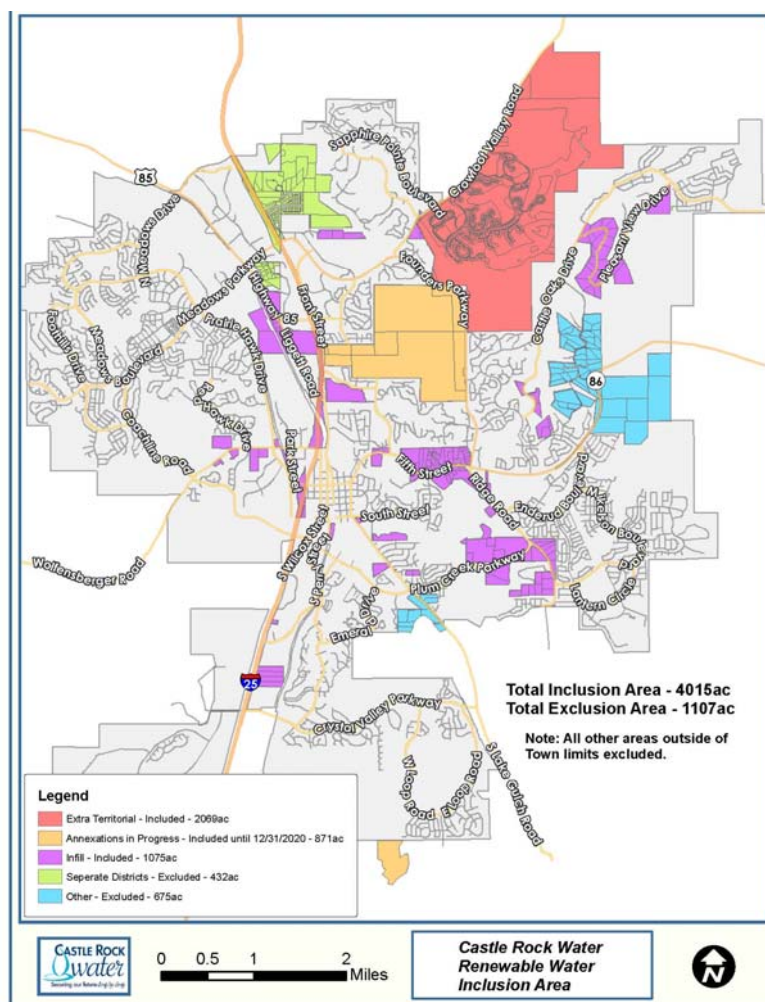


Figure 3-3 shows additional areas that have been included in the analysis of entitlements for the plan as a high use scenario.

**Figure 3.3: Castle Rock Water Inclusion and Exclusion Analysis**



Demands will continue to be impacted by weather, conservation, costs, and population. Some key water conservation initiatives which could impact demand include advanced metering initiatives, formal metering testing programs, water budget rate structure changes, landscape and irrigation retrofits to Town parks and right-of-ways, indoor conservation incentive programs, hot water recirculation systems, and irrigation audits.