

ORDINANCE LEVYING PROPERTY TAXES

TOWN OF CASTLE ROCK

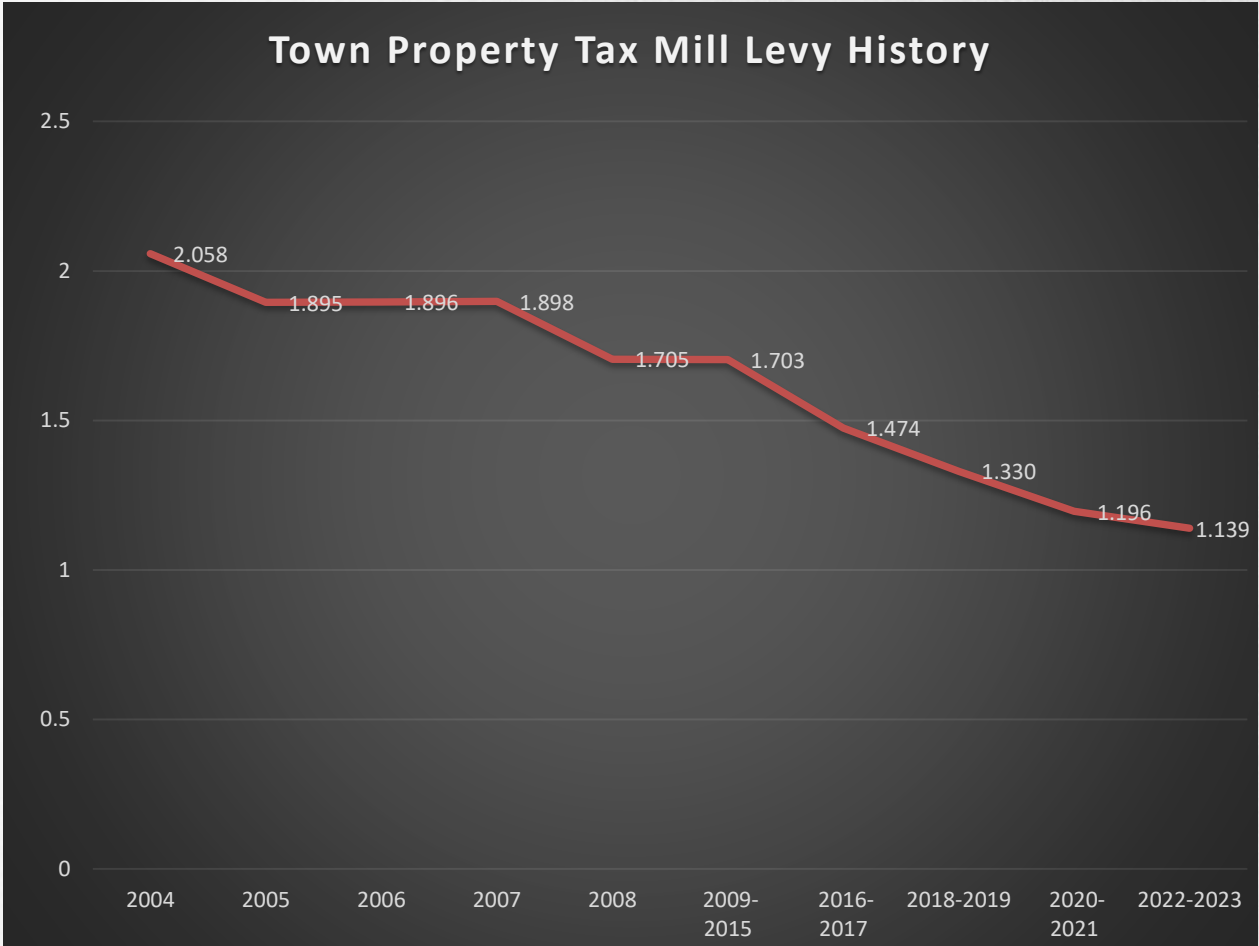
SEPTEMBER 20, 2022



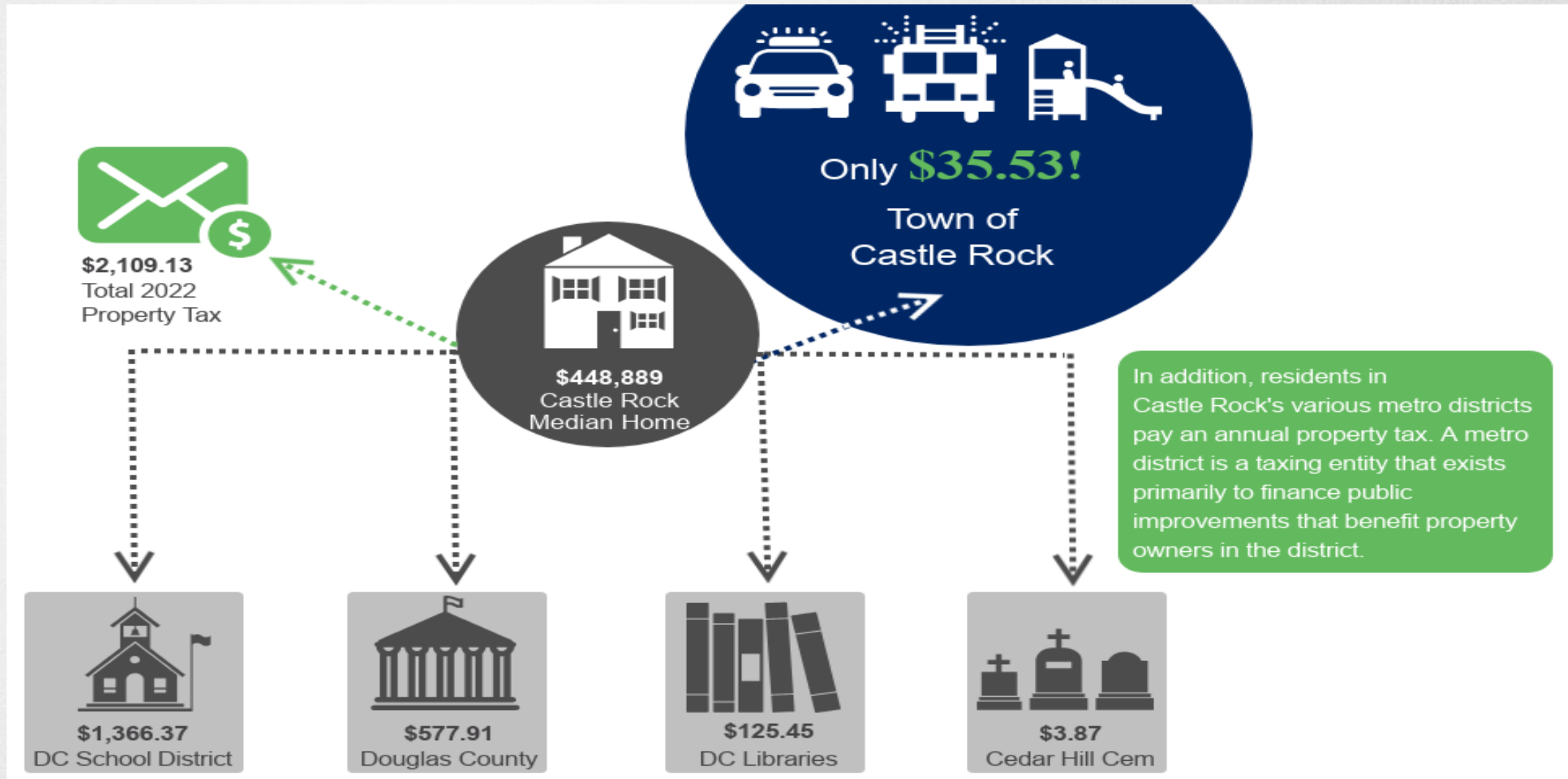
TOWN PROPERTY TAX

The Town’s taxable valuation for 2023 increased 0.82% based on the preliminary certification of values.

This results in a Mill Levy rate of 1.139 mills, no change from last year



TOWN PROPERTY TAX





**"I MOVE TO APPROVE THE ORDINANCE AS INTRODUCED BY
TITLE**

**"I MOVE TO APPROVE THE ORDINANCE AS INTRODUCED BY
TITLE, WITH THE FOLLOWING CONDITIONS: (LIST
CONDITIONS)."**

"I MOVE TO CONTINUE THIS ITEM TO (FUTURE DATE)