

**RESOLUTION:  
INTERGOVERNMENTAL AGREEMENT FOR THE  
COST SHARING, CONSTRUCTION AND CAPACITY  
ALLOCATION OF A WISE PUMP STATION AT  
PARKER WATER & SANITATION DISTRICT**

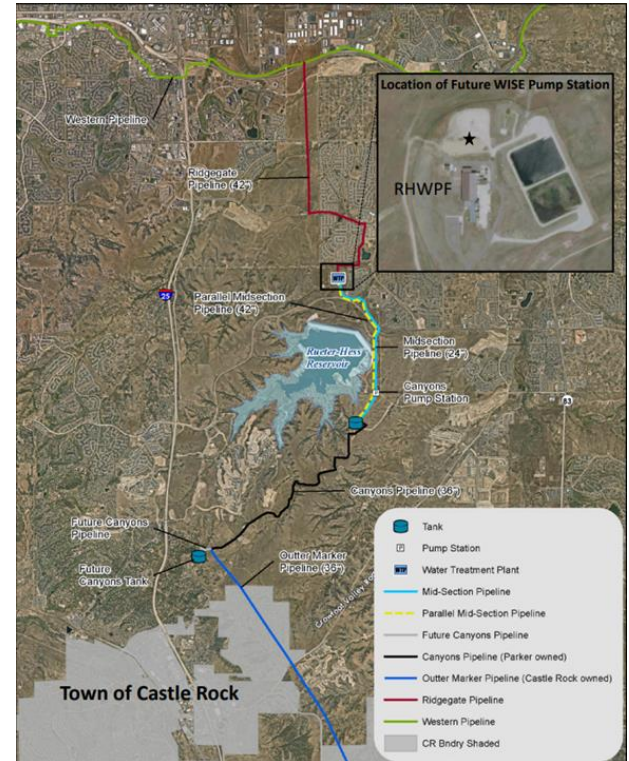
APRIL 16, 2024



# WISE PUMP STATION IGA

## BACKGROUND

- RidgeGate Line constructed in 2015 to deliver WISE water to southern partners
- Pump station inside Rueter-Hess Water Purification Facility was initially utilized
- PWSD used its own pump station capacity
  - Deferred WISE infrastructure
- Four construction bids received
  - Filanc was low bidder at \$14.8M
- WISE Investments to Date = \$64 million
- Potential WISE Future Expenditures = \$70.2 million



Location Map of WISE Local Infrastructure

# WISE PUMP STATION IGA

## KEY TERMS

- Cost splits for the construction phase based on pro-rata share of total capacity
  - Castle Rock 11.5 mgd or 52%
  - PWSD 6.5 mgd or 29%
  - DWSD 4.2 mgd or 19%
- PWSD will manage project, own and operate
- Major construction elements:
  - New building for equipment & controls
  - Wet well and surge tank
  - Chemical facilities
  - Piping to connect to delivery system



*PWSD's Canyons Pump Station used to deliver flows from Pressure Zone 2 to PZ 3*

# WISE PUMP STATION IGA

## BUDGET & SCHEDULE

### Project Cost Summary

- Design Change Order: \$23,225
- CRW's construction share: \$8,045,199
- Construction engineering services: \$476,320
- Third-party testing: \$52,000
- Xcel natural gas feed: \$26,000
- **CRW's cost: \$8,622,744**

### Budget

- Water Resources/WISE Infrastructure
  - \$10,186,050
  - Revenues for this infrastructure

### Schedule

- Begin summer 2024, End summer 2025 (est.)



*An exterior view of Parker's RHWPF*

# RECOMMENDATIONS

- Castle Rock Water Commission
- Staff
- **Questions?**





*I MOVE TO APPROVE RESOLUTION NO. 2024-044  
AS INTRODUCED BY TITLE*

*I MOVE TO APPROVE THE RESOLUTION AS INTRODUCED BY  
TITLE, WITH THE FOLLOWING CONDITIONS: \_\_\_\_\_*

*“I MOVE TO CONTINUE THIS ITEM TO THE TOWN COUNCIL  
MEETING ON \_\_\_\_\_ DATE TO ALLOW  
ADDITIONAL TIME TO: \_\_\_\_\_*