

CASTLE ROCK WATER

RESOLUTION 2024-067 AND RESOLUTION 2024-068 HIGHWAY 85 WASTEWATER COLLECTION AND TREATMENT

JULY 2, 2024



HIGHWAY 85 WASTEWATER

BACKGROUND

- Intergovernmental Agreements (IGA) with Douglas County and Dominion Water and Sanitation District (Dominion) in 2023
- \$26.8M funded by American Rescue Plan Act (ARPA) through Douglas County
- Conceptual and schematic design completed for Chatfield Basin Water Reclamation Facility (CBWRF)
- 30% engineering completed for Louviers Lift Station and Force Main
- \$1.2M spent-to-date for the above two engineering projects
- Project has changed and parties discovered ARPA funds not sufficient to complete entire original project



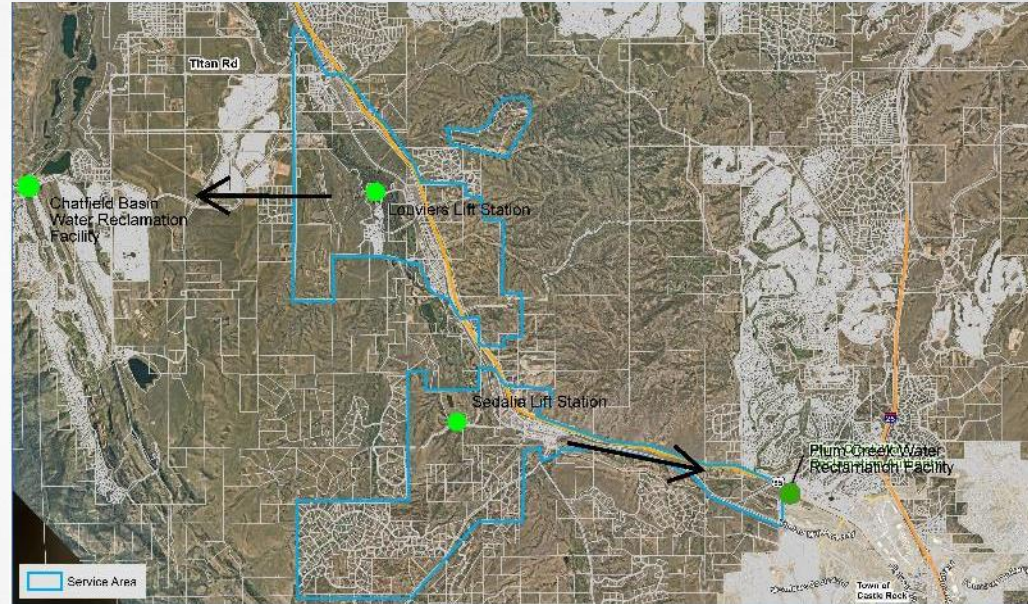
Layout of CBWRF overlayed with old Roxborough plant

New Wastewater Treatment Plant

HIGHWAY 85 WASTEWATER

REVISED SCOPE

- Splits Hwy 85 corridor into North and South areas
- North area includes Louviers and Sterling Ranch with flows going to CBWRF - Dominion
- South area includes Sedalia lift station and force main with flows going to Plum Creek Water Reclamation Authority (PCWRA) – Castle Rock
- Amend and revise IGA with Douglas County
- Discontinue IGA with Dominion

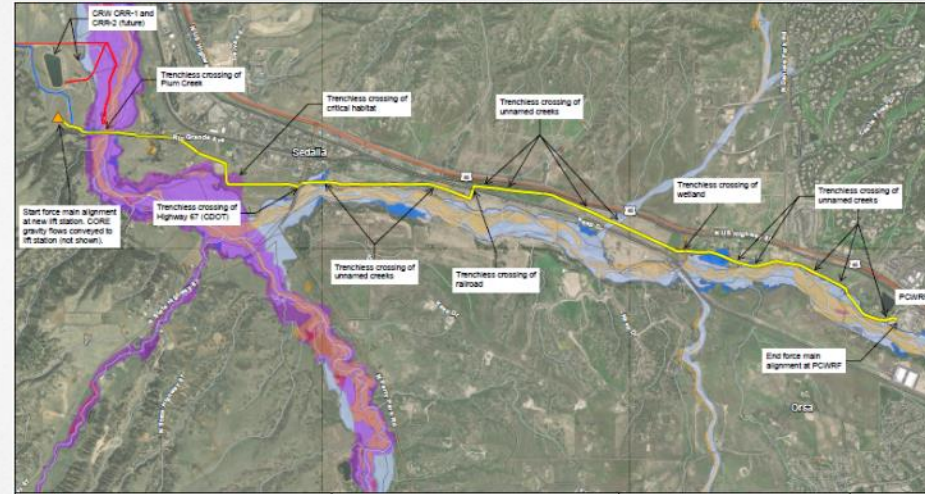


Highway 85 Service Area
North and South Areas Combined

HIGHWAY 85 WASTEWATER

SEDALIA LIFT STATION AND FORCE MAIN

- Lift station near Castle Rock Reservoirs with force main to PCWRA
- Funded by ARPA through Douglas County - \$14M
- Designed at 600,00 Gallons per Day Capacity
- Complete by December 2026
- 1% Project Management fee back to CRW
- System owned and operated by CRW
- 10% extraterritorial surcharge to CRW on all rates and fees
- System development fees for lift station and force main back to County to reinvest in sewer infrastructure
- Sedalia, CORE, Elementary School connections funded by system development fees and/or future agreement

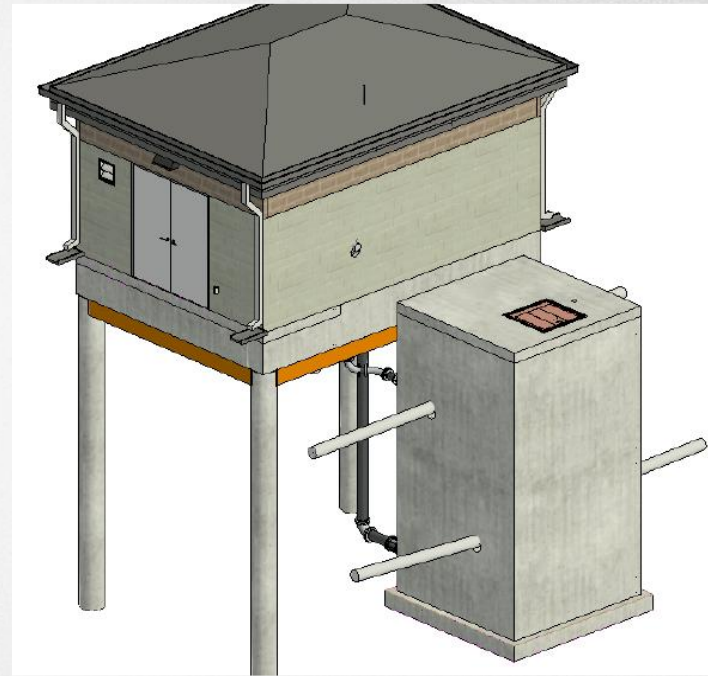


**Conceptual Layout of Lift Station and Force Main
Sedalia to Plum Creek Water Reclamation Authority**

HIGHWAY 85 WASTEWATER

BENEFITS OF AMENDMENT

- Aging septs can now be eliminated protecting water quality at Chatfield Reservoir
- CRW expands service area to further distribute costs
- Brings additional reusable water back to Castle Rock and extends life of Denver basin aquifers
- Ensures CRW has oversight of water and wastewater development along corridor
- Provides additional funding through 10% surcharge
- Supports primary employment along corridor
- Ensures new developments bring renewable water for smart growth



CONCEPTUAL LIFT STATION

HIGHWAY 85 WASTEWATER

RECOMMENDATIONS

- Staff
- Castle Rock Water Commission
- Douglas County Water Commission
- Douglas County Board of County Commissioners

HIGHWAY 85 WASTEWATER

MOTION OPTIONS

- PROPOSED MOTIONS:

- *“I move to approve the Resolution 2024-067 as introduced by title.”*
- *“I move to approve the Resolution 2024-068 as introduced by title.”*

- ALTERNATIVE MOTIONS:

- *“I move to approve the Resolution as introduced by title, with the following conditions: (list conditions).”*
- *“I move to continue this item to the Town Council meeting on ____ date to allow additional time to (list information needed).”*