



Castle Rock
**PARKS &
RECREATION**
March 2026
Monthly Report



UPCOMING

Events

View up-to-date information at CRgov.com/Events.

APRIL
16

Parks and Rec Job Fair
3:30 to 6 p.m.
Recreation Center

APRIL
23

Wild in Our Town
6 to 7:30 p.m.
Philip & Jerry Miller Library

APRIL
24 & 27

Arbor Day tree planting
9 to 11 a.m.
24: Philip S. Miller Park
27: Cobblestone Ranch Park

MAY
2

Spring Up the Creek
9 to 11 a.m.
[See location list](#)

CAPITAL PROJECT UPDATES

Parks, Open Space & Trails

The following updates summarize general progress that occurred throughout the month on capital projects managed through the Parks and Recreation Department; for background information and additional details visit CRgov.com/ProjectUpdates.

EMERALD PARK PICKLEBALL COURT IMPROVEMENTS

Pickleball court improvements are coming to Emerald Park this month (April), including the installation of an 18' x 18' metal shelter at the pickleball court plaza. During construction, the courts will be temporarily closed to allow for safe installation of the shelter. Benches and the trash receptacle will also be removed while concrete is taken out and replaced to accommodate the shelter's foundation. These improvements are part of ongoing efforts to enhance the player experience and support the continued growth of pickleball in the community.

Pickleball has seen significant growth in Castle Rock over the past decade. First introduced locally around 2012, the sport quickly gained traction after community members advocated for dedicated play space. Early play began at Founders Park using a repurposed inline rink with portable nets, and by 2016, increased demand led to the resurfacing of courts to create the Town's first dedicated pickleball facility. What began with a small group of players has since evolved into a thriving program supported by leagues, clinics and tournaments.

Today, Castle Rock offers 27 dedicated pickleball courts across town, reflecting the sport's rapid rise in popularity. The continued investment in facilities, like the upcoming improvements at Emerald Park, demonstrates the Town's commitment to meeting demand and fostering community through recreation. Pickleball has not only grown as a sport locally but has also become an important way for residents to connect and stay active. Construction is expected to take approximately one week.



Location of shelter shown in blue

CAPITAL PROJECT UPDATES

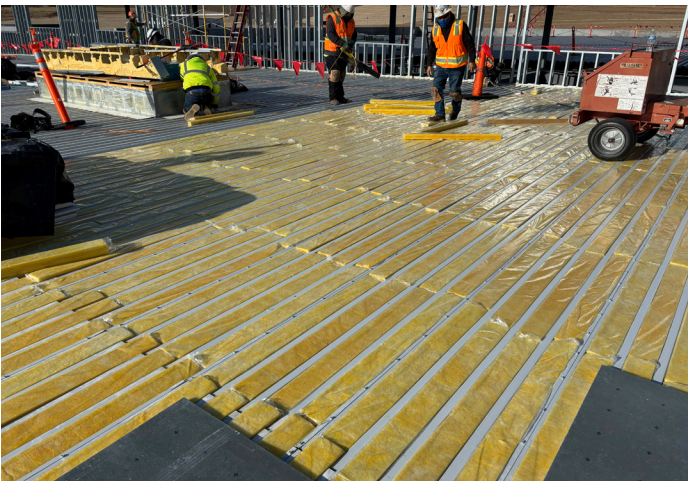
Parks, Open Space & Trails



CASTLE ROCK SPORTS CENTER

Construction continued this month on the Town's much-anticipated indoor recreation facility, the Castle Rock Sports Center. The 145,000 square-foot facility will serve as a premier destination for sports, recreation and community wellness in Castle Rock.

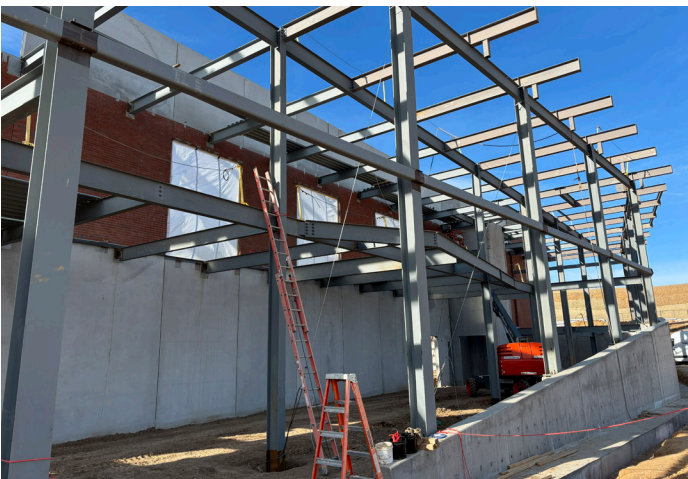
Work progressed steadily throughout the month, with several key structural and vertical construction milestones achieved. Mid-month, crews began placement of slab-on-grade concrete in multiple areas of the facility, including the multi-purpose spaces and locker rooms. This work represents a significant step forward in establishing the building's interior floor systems and advancing overall structural completion.



At the same time, installation of the natatorium roof system commenced, continuing progress on enclosing the aquatic portion of the facility. The Town also celebrated a major milestone with a topping off ceremony, marking the placement of the final structural steel beam and highlighting the project's vertical progress.

Toward the end of the month, crews prepared to begin installation of roof steel for Competition Gymnasium D, continuing momentum on the facility's structural framework and bringing additional program spaces closer to completion.

Photos at left highlight construction progress and show, from top to bottom, locker room flooring, natatorium roof installation and competition gym entrance steel placement. All photos were taken March 22.



The facility, located on 10.1 acres off Prairie Hawk Drive, remains on track for a summer 2027 opening.

CAPITAL PROJECT UPDATES

Parks, Open Space & Trails

LOST CANYON RANCH OPEN SPACE

Lost Canyon Ranch Open Space continues to take shape as one of Castle Rock's most significant conservation and recreation projects. This 681-acre property was preserved to protect its rolling grasslands, ponderosa forests, canyon landscapes and wildlife habitat, while providing future low-impact public access.

March brought continued progress across multiple areas of Phase 1 construction, with a focus on roadway improvements, trail development and trailhead construction. Along the internal access road leading to the Creekside trailhead, crews completed installation of road base and are preparing for final grading and compaction ahead of asphalt paving. Additional work is underway to evaluate and install internal roadway fencing to support long-term site management.

At the Creekside trailhead, construction of visitor amenities is nearing completion. The retaining wall is approximately 90% complete, while concrete stairs, sidewalks, curb and gutter have been installed. ADA parking stalls are currently being poured, and the adjacent Willow Creek ADA-accessible trail is approximately 95% complete. Design elements such as chicanes have been incorporated to maintain accessibility while limiting bike access along the path. Work is also progressing at the Cattleman's trailhead, where concrete improvements are complete, and coordination continues on securing on-site structures. Across the site, erosion control and stabilization efforts remain ongoing to protect natural resources as construction advances. In addition to field work, planning and coordination efforts continued throughout the month. Plans for entryway improvements and traffic calming measures along Lost Canyon Ranch Road have been distributed for review, and staff are coordinating with a sign fabricator on wayfinding and trailhead signage. On March 24, Town Council approved change orders to allow for road base installation, a key step needed to advance toward final paving.

These efforts reflect the Town's continued commitment to balancing public access with preservation of natural and cultural resources. As construction progresses, Lost Canyon Ranch remains on track for an anticipated public opening in 2026, when residents and visitors will gain their first opportunity to experience this unique landscape.



OPERATIONAL

Insights and Updates

Program and Event Updates

SUMMER CONCERT SERIES CELEBRATES 10TH ANNIVERSARY SEASON

Planning is underway for a milestone 10th anniversary season of the Summer Concert Series, one of the Town's premier



community events and a cornerstone of summer programming in Castle Rock. Hosted at the Amphitheater at Philip S. Miller Park, the series continues to draw regional attention as a high-quality outdoor venue along the Front Range, featuring nationally recognized artists and creating memorable experiences for residents and visitors alike.



Over the past decade, the Summer Concert Series has grown significantly

in both scale and reputation, regularly attracting Grammy-nominated and nationally touring performers. The event has become a signature offering for the community, contributing to Castle Rock's identity as a destination for live entertainment while supporting local economic activity and community engagement.

The 2026 lineup reflects continued investment in diverse, high-quality programming, with performances scheduled throughout the summer season:

- June 26: Marshall Tucker Band
- July 18: Jackson Dean
- Aug. 1: Fitz and the Tantrums (Colorado Day show)
- Aug. 15: Cheap Trick
- Aug. 29: Still the Same: A Bob Seger Tribute with the Denver Pops Orchestra

Staff across multiple divisions are coordinating efforts to ensure a successful season, including event logistics, marketing, sponsorships and operational planning. As the series enters its 10th year, the focus remains on delivering a safe, engaging and high-quality experience that continues to meet community expectations and build on the program's long-standing success.

ENHANCEMENTS COMPLETED IN TYKE'S TOYLAND CHILD WATCH AREA

Recent improvements were completed in the Recreation Center's Tyke's Toyland child watch area, enhancing the space for both staff operations and participant experience. The room, which provides on-site child watch services for children ages one to eight while parents use the facility, received a comprehensive refresh.

Upgrades included replacing carpet tiles with luxury vinyl tile (LVT) flooring, allowing for easier cleaning, improved durability and enhanced sanitation. Walls were repainted, and a new commercial-grade sink was installed to support more effective cleaning and sterilization of toys and surfaces. Outdated furnishings, including an old refrigerator and toys, were removed to create a more streamlined and hygienic environment. In addition, a new check-in desk and gate system has been ordered and is expected to be installed soon, which will further improve security and operational efficiency.

These updates support a safer and more sanitary space for children while making daily operations more efficient for staff. The improvements also align with the department's commitment to maintaining high-quality, family-friendly amenities that meet the needs of Recreation Center users.

OPERATIONAL

Insights and Updates

THERAPEUTIC RECREATION PROGRAM SUPPORTS CONTINUED ENGAGEMENT AND GROWTH

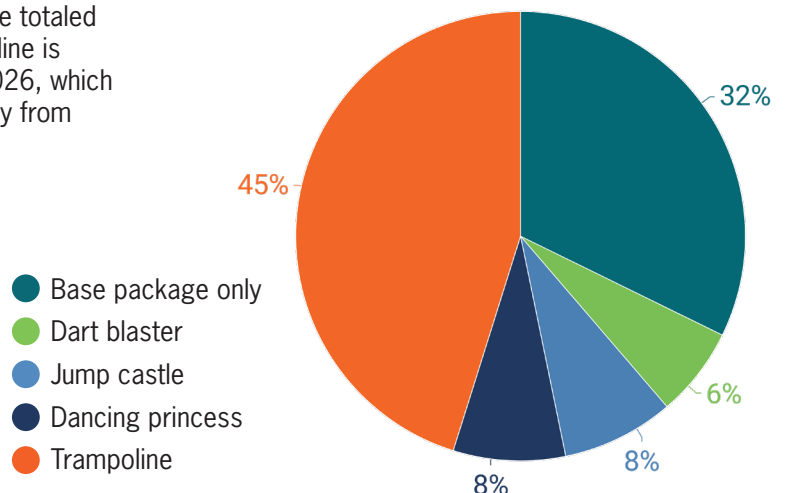
The department's Therapeutic Recreation program continued to provide inclusive and meaningful recreation opportunities throughout March, serving a diverse group of participants across a variety of program offerings. Activities focused on promoting physical activity, social connection and skill development included adaptive swim lessons, water aerobics, fitness-based programs, creative arts experiences and community outings. Participation remained strong across programs, with several offerings reaching capacity and generating waitlists, demonstrating continued demand for inclusive recreation opportunities within the community.

Signature programs such as Special Olympics basketball and swim teams also saw strong participation, supporting ongoing skill development and team-based engagement. Additional offerings, including adaptive fitness and arts-based programs, provided participants with opportunities to build confidence, independence and social connections in supportive environments.

Looking ahead, staff are preparing for a robust lineup of spring and summer programming. Upcoming opportunities include community outings to mini golf and the Cheyenne Mountain Zoo, expanded fitness offerings such as Water Aerobics and Move and Groove, athletics programs including golf and bocce ball, and summer camp experiences designed to further enhance participation and engagement across the Therapeutic Recreation program.

BIRTHDAY PARTY PROGRAM UPDATE

March birthday party activity remained steady, with 63 parties hosted across facilities, compared to 84 in March 2025. Attendance totaled 799 children, a slight decrease from 853 last year. The decline is likely influenced by unseasonably warm weather in March 2026, which may have shifted demand toward outdoor activities and away from indoor party bookings.

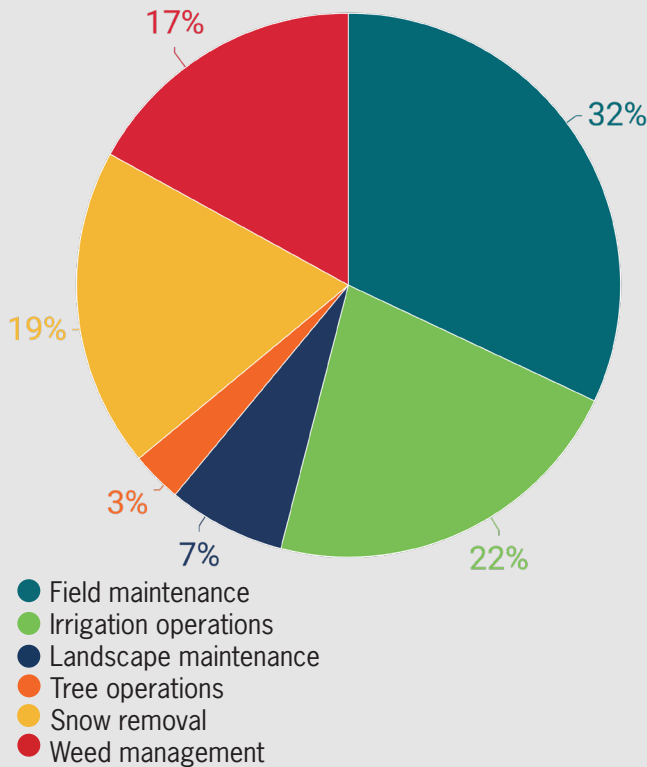


MARCH OPERATIONS

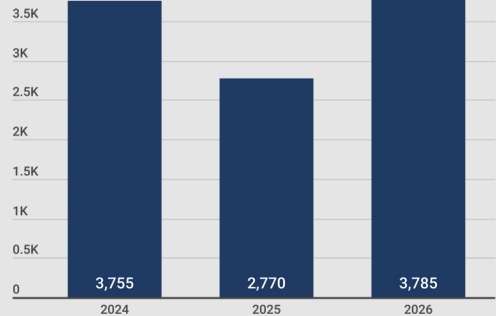
By the Numbers

Parks Maintenance and Operations

This chart provides a breakdown of Parks Maintenance and Operations activities and areas of focus for the month.



RockREC Registrations



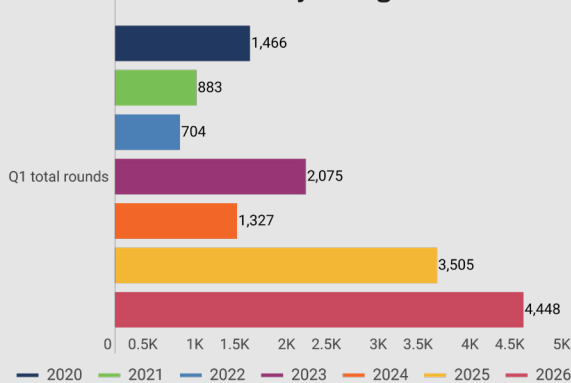
This data represents the number of online program registrations completed via the RockREC app or the desktop version of the site, Recreation.CRgov.com, in March '24 - '26.

POST Partners Volunteer Program



Red Hawk Ridge Golf Course

Golf Rounds: YoY January through March



Park Pavilion and Trolley Rentals

The Town Trolley is available for rent for a variety of events, including field trips, historic landmark tours, weddings, nights on the town, and special event parking transportation.



Pavilions at Town parks are also available for rent throughout the year, with the rest being available on a first-come, first-served basis. Rental numbers for both assets typically slow with colder weather.

