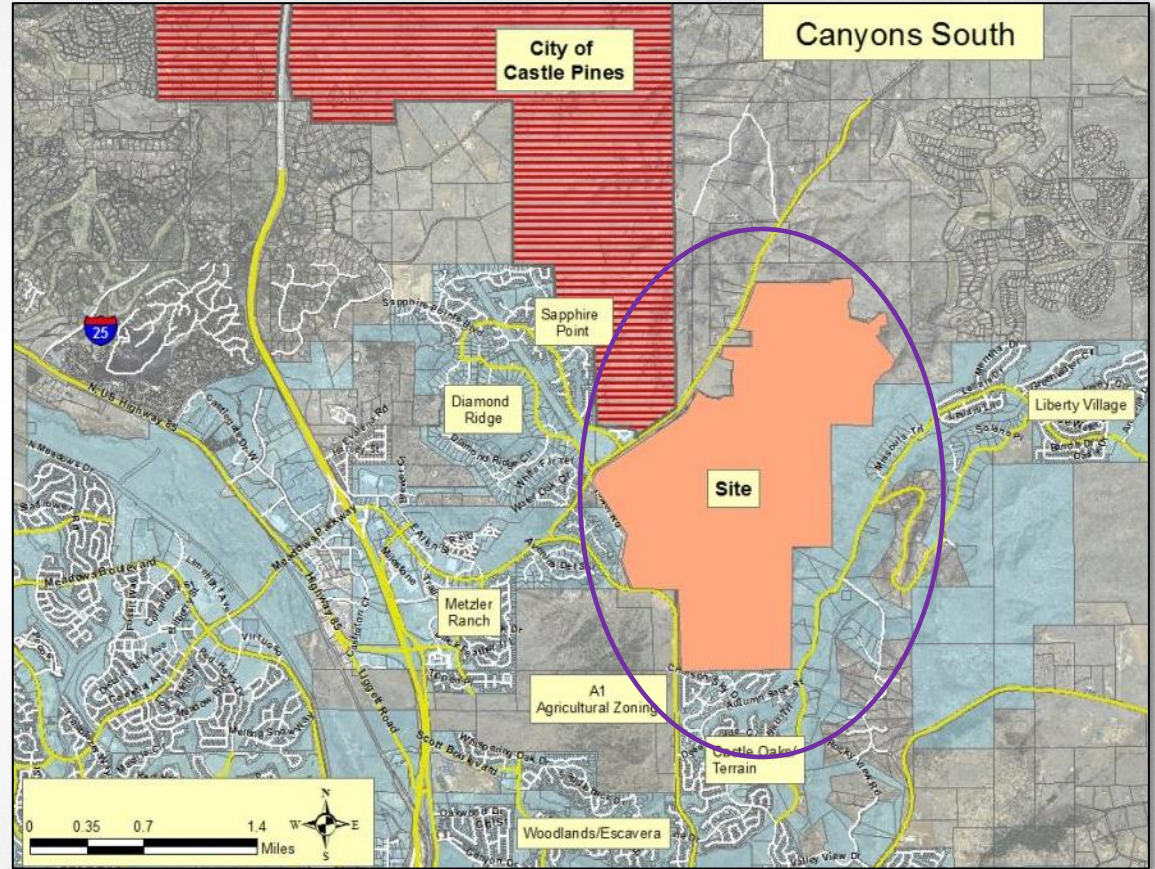


SUBSTANTIAL COMPLIANCE **CANYONS SOUTH ANNEXATION**

TOWN COUNCIL
FEBRUARY 16, 2016



VICINITY MAP



ANNEXATION PROCESS



STATE REQUIRES THREE STEPS

1. Substantial Compliance: State application requirements.
2. Eligibility: State annexation requirements – ***can*** it be annexed?
3. Annexation and Zoning: ***Should*** it be annexed?

SUBSTANTIAL COMPLIANCE



1. Substantial Compliance: State application requirements.
2. Eligibility: State annexation requirements – *can* it be annexed?
3. Annexation and Zoning: *Should* it be annexed?

STAFF RECOMMENDS SETTING ELIGIBILITY HEARING



THANK YOU