



# GATEWAY MESA OPEN SPACE



CRgov.com/trails • 303-814-7444



### Fast facts about Gateway Mesa Open Space

Trail length	1.6-mile loop
Trail rating	Easy
Trail surface	Native surface
Wildlife highlights	Bluebirds and turkey vultures
Special comments	Mountain bikes, technical rock climbing and horses are prohibited

**The native-surface Chuck's Loop Trail segment connects to the Mitchell Creek Canyon Trail system in the Founders Village area.**

The property is on a bluff, with steep, rock-capped cliffs on the eastern portion overlooking Franktown and the Cherry Creek Valley to the east. The property has expansive views of the Rocky Mountains, extending from Pikes Peak on the south to Longs Peak on the northwest.

The main trailhead parking lot for the trail is a dirt lot on the east side of Colorado Highway 86.

Beware of steep cliffs and rattlesnakes while enjoying this trail.

**Note: Due to permanent conservation use restrictions placed on the property, mountain bikes and horses are not allowed on the trail.**

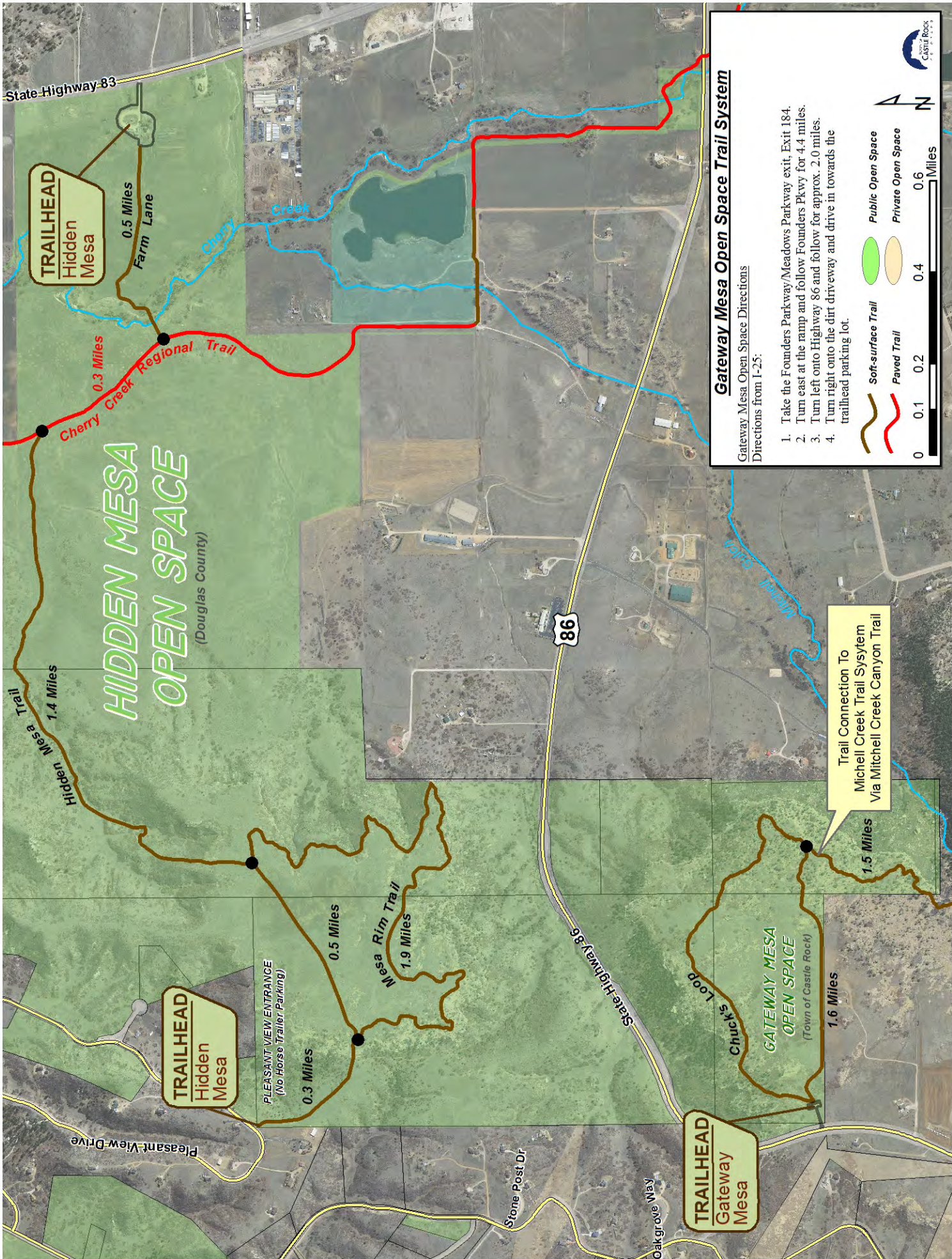


**ADOPTED**  
Available

For maps of the Town's other trails, scan this QR code.







### Gateway Mesa Open Space Trail System

Gateway Mesa Open Space Directions  
Directions from I-25:

1. Take the Founders Parkway/Meadows Parkway exit, Exit 184.
2. Turn east at the ramp and follow Founders Pkwy for 4.4 miles.
3. Turn left onto Highway 86 and follow for approx. 2.0 miles.
4. Turn right onto the dirt driveway and drive in towards the trailhead parking lot.



Trail Connection To  
Mitchell Creek Trail System  
Via Mitchell Creek Canyon Trail

**TRAILHEAD**  
Gateway  
Mesa

**TRAILHEAD**  
Hidden  
Mesa

**TRAILHEAD**  
Hidden  
Mesa

**HIDDEN MESA  
OPEN SPACE**  
(Douglas County)

**GATEWAY MESA  
OPEN SPACE**  
(Town of Castle Rock)

86

State Highway 86

State Highway 83

Farm Lane

Cherry Creek Regional Trail

Hidden Mesa Trail

PLEASANT VIEW ENTRANCE  
(No Horse Trailer Parking)

Pleasant View Drive

Stone Post Dr

Oak Grove Way

0.3 Miles

0.5 Miles

1.9 Miles

1.4 Miles

0.3 Miles

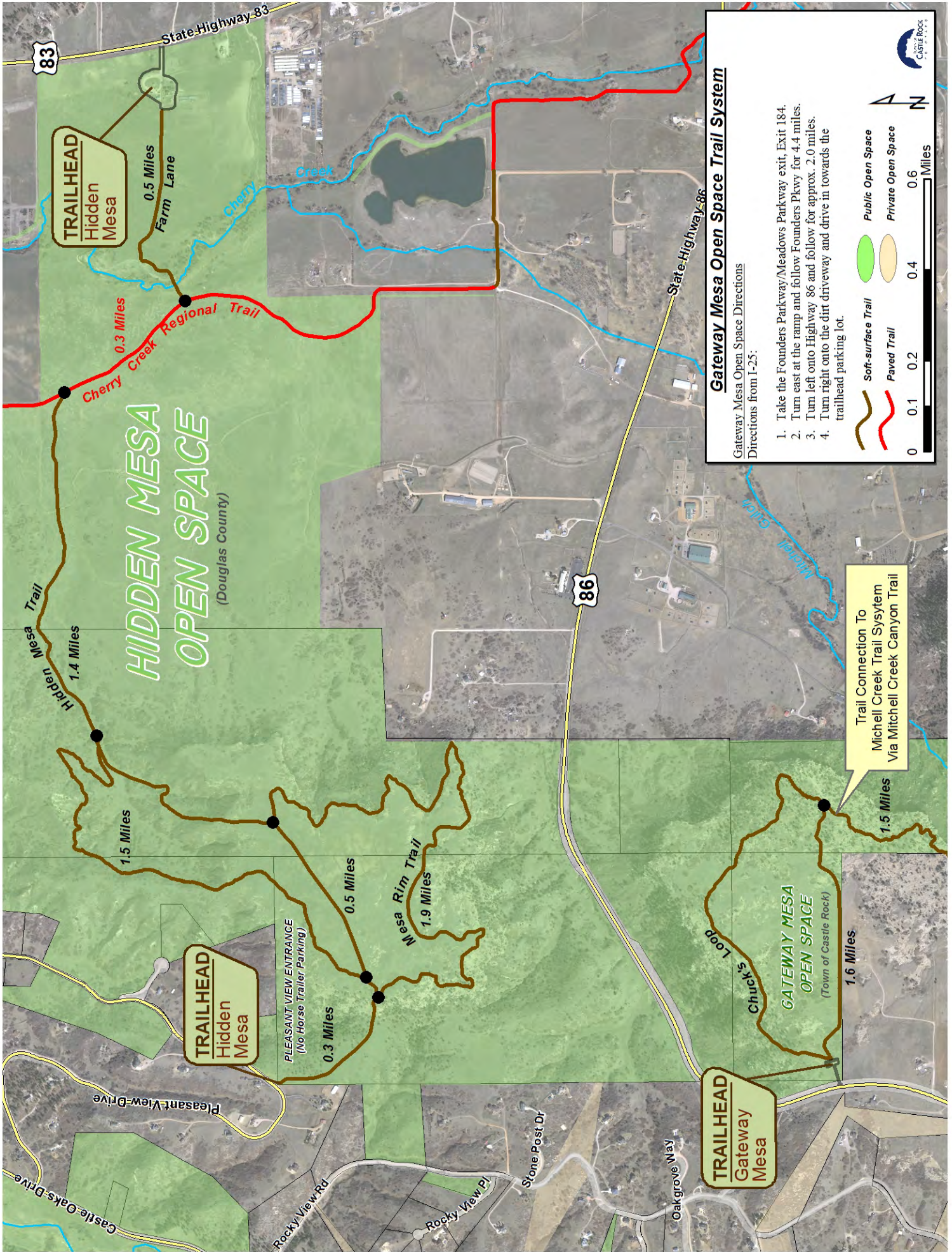
0.5 Miles

1.5 Miles

1.6 Miles

0 0.1 0.2 0.4 0.6 Miles





### Gateway Mesa Open Space Trail System

Gateway Mesa Open Space Directions  
Directions from I-25:

1. Take the Founders Parkway/Meadows Parkway exit, Exit 184.
2. Turn east at the ramp and follow Founders Pkwy for 4.4 miles.
3. Turn left onto Highway 86 and follow for approx. 2.0 miles.
4. Turn right onto the dirt driveway and drive in towards the trailhead parking lot.

● Soft-surface Trail    ● Public Open Space  
● Paved Trail    ● Private Open Space

0 0.1 0.2 0.4 0.6 Miles