

CASTLE ROCK WATER

RESOLUTION APPROVING UPDATES TO THE SOURCE WATER PROTECTION PLAN

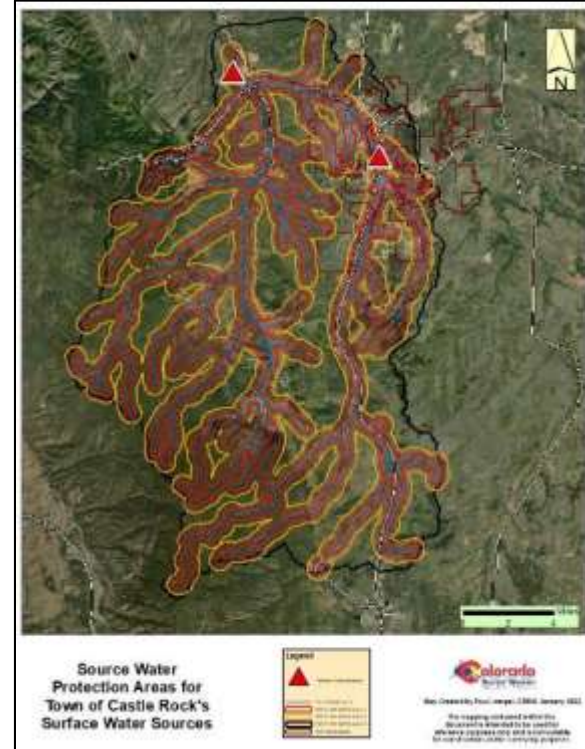
MAY 3, 2022



SOURCE WATER PROTECTION PLAN

WHAT IS SOURCE WATER PROTECTION?

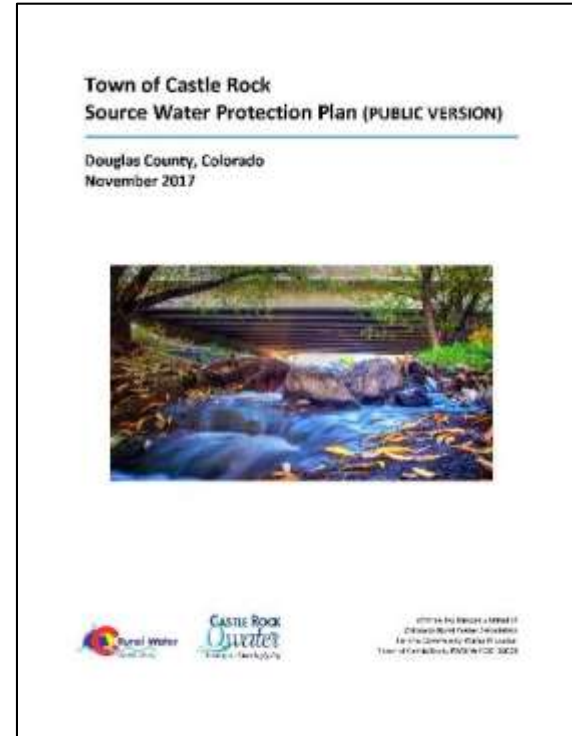
- ❖ Proactive approach to preventing the pollution of lakes, rivers, streams and groundwater that serve as sources of drinking water
- ❖ Non-regulatory program that focuses on stakeholder engagement, education and awareness
- ❖ The Plum Creek watershed includes over 277 sq. mi. and extends into northern Teller and El Paso Counties



SOURCE WATER PROTECTION PLAN

BACKGROUND

- ❖ Prepared in 2017/adopted 2018
- ❖ Formed steering committee/worked with stakeholders
- ❖ Delineated source water protection areas
- ❖ Identified/prioritized potential sources of contamination
- ❖ Developed Best Management Practices (BMPs)
- ❖ Implemented plan



SOURCE WATER PROTECTION PLAN

SUMMARY OF UPDATES

- ❖ Expanded area to include West Plum Creek and Plum Creek down to Plum Creek Diversion
- ❖ Delineated new source water protection areas
- ❖ Identified/prioritized potential sources of contamination
- ❖ Addressed wildfire impact potential
- ❖ Updated written plan



Plum Creek
Diversion
and Pump
Station

SOURCE WATER PROTECTION PLAN

IMPLEMENTATION OF SWPP

- ❖ Educate stakeholders
- ❖ Coordinate with stakeholders/agencies
- ❖ Share emergency response information
- ❖ Raise awareness within community

RECOMMENDATIONS

- ❖ Staff
- ❖ Water Commission





I MOVE TO APPROVE RESOLUTION NO. 2022-051
AS INTRODUCED BY TITLE

ALTERNATE MOTIONS

I MOVE TO APPROVE THE RESOLUTION AS INTRODUCED BY TITLE,
WITH THE FOLLOWING CONDITIONS: _____

I MOVE TO CONTINUE THIS ITEM TO THE TOWN COUNCIL MEETING
ON ____ DATE TO ALLOW ADDITIONAL TIME TO: _____