



Monthly Report

May 2025



Pavements



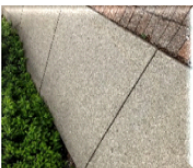
Traffic Control



Street Lights



Signals



Sidewalks



Structures



Verge



Fleet

Capital Improvement Program Projects

Crystal Valley Interchange

- Work continues on the retaining wall along the East Frontage Road, lane closures will be as needed only
- Bridge deck was completed. Work has begun on constructing the bridge railing
- Because the bridge deck concrete has fully cured; embankment material has begun to be hauled across the bridge to complete the embankments for the North Bound I-25 on and off ramps
- Subgrade preparation continues with anticipation of paving operations starting in late June on west side of I-25
- Installation of conduit for the electrical infrastructure began on the west side of I-25



Fifth Street Widening

- Staff continues to seek concurrence for construction plans and bid documents from CDOT
- Anticipating approaching Public Works Commission and Town Council with Construction contract and Construction Management Services in August, 2025

Crowfoot Valley Road Widening

- Earthwork has begun along the south side of roadway.
- Knobcone Drive improvements are tentatively scheduled to start by third week of June
- Ongoing coordination with utility companies for relocation during construction

Relocation of Dawson Ridge Blvd and West Frontage Rd

- Paving operations continue
- Staff continues to coordinate with the Dawson Trails developer for the construction of Roundabouts along the Dawson Trails Blvd corridor

Wolfensberger Widening Improvements Project

Right of way (ROW) acquisition continues with offers and Purchase & Sales agreements being reviewed by owners

Pavements

Staff continues to advance pavement maintenance with current efforts on pavement replacement and rehabilitation in the Pavement Maintenance Programs (PMP) Central Region. Work this month has included asphalt pavement patching, subgrade preparation, paving operations



Executed 17 large scale asphalt repairs utilizing 43.61 tons of hot mix asphalt in response to utility cuts and roadway damage. Additionally, 1500 pounds of cold mix asphalt was used to repair approximately 100 potholes.

Completed the last portions of the annual Spring Sweep having cleaned 548 lane miles of roadways throughout Town.

Traffic Signals

- Downtown Streetlight Installation completed
- 4 Special Events supported with Traffic Control
- Chatfield Ave. Stop Sign Relocation Completed
- RRFB buttons audible beeps activated



Structures

2025 Bridge Maintenance Program

The proposed bridge contract will perform needed maintenance on the Castle Rock Parkway bridge over SH85, and Plum Creek Pkwy bridge over the UPRR. The project is expected to start after the 4th of July holiday and expected to be completed by the end of August.

Sidewalks

Curb, Gutter, and Sidewalk Project

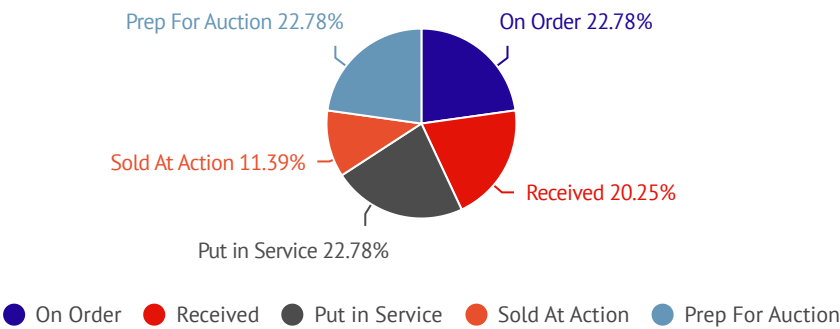
Sidewalk repairs have been completed in the Red Hawk area and the operation has moved to the Woodlands.



Fleet

The month of May had normal levels of repairs and maintenance activities for the Fleet Services Division. We completed 136 work orders for various types of repairs. There was an emphasis put on completing periodic annual inspections for our DOT vehicles and preventative maintenance (PM) schedule. We completed 79 PM work orders during this month. Parts Storeroom activities were consistent from previous periods. Most of the \$28k in parts were received and we issued over \$50k from our inventories. Town wide fuel usage remained constant near 15k gallons for May. Vehicle acquisitions and disposals have been steady for 2025. There are currently 18 vehicles and equipment ordered, 18 have been put in service, 16 have been received, 9 sold at auction and another 18 planned for auction this year so far.

2025 Vehicle Acquisitions and Disposals



Verge

Verge maintenance operations in May included mowing, trimming, and trash pickup. These operations were carried out along 94 edge line miles of Town maintained road verge. Additionally, roadside drainage was re-established along 0.75 edge line miles of Town roadway.