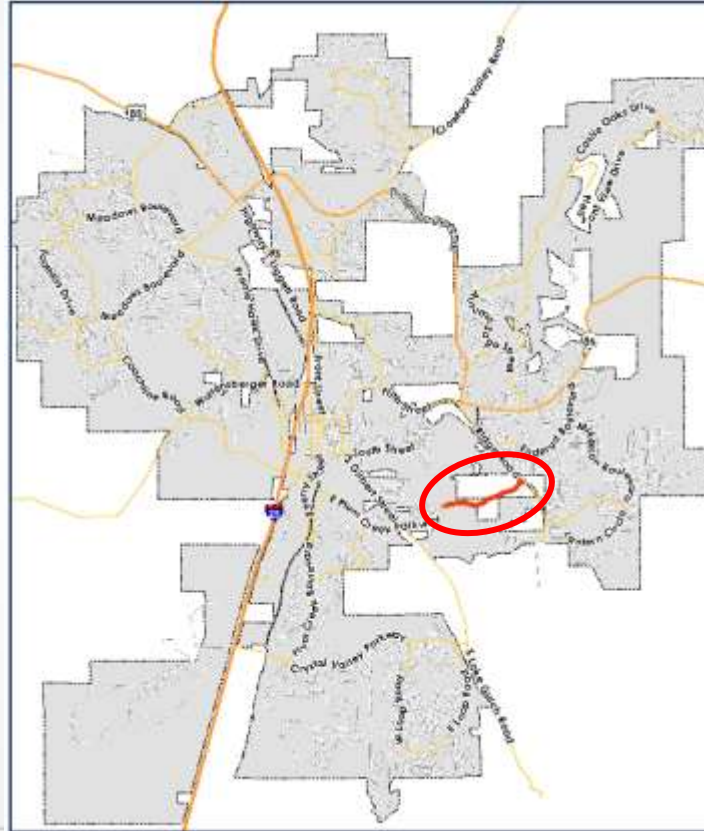


A RESOLUTION APPROVING A CONSTRUCTION CONTRACT BETWEEN THE TOWN OF CASTLE ROCK AND “RME LTD., LLC DBA ELITE SURFACE INFRASTRUCTURE” FOR THE PLUM CREEK PARKWAY WIDENING PHASE 2 PROJECT

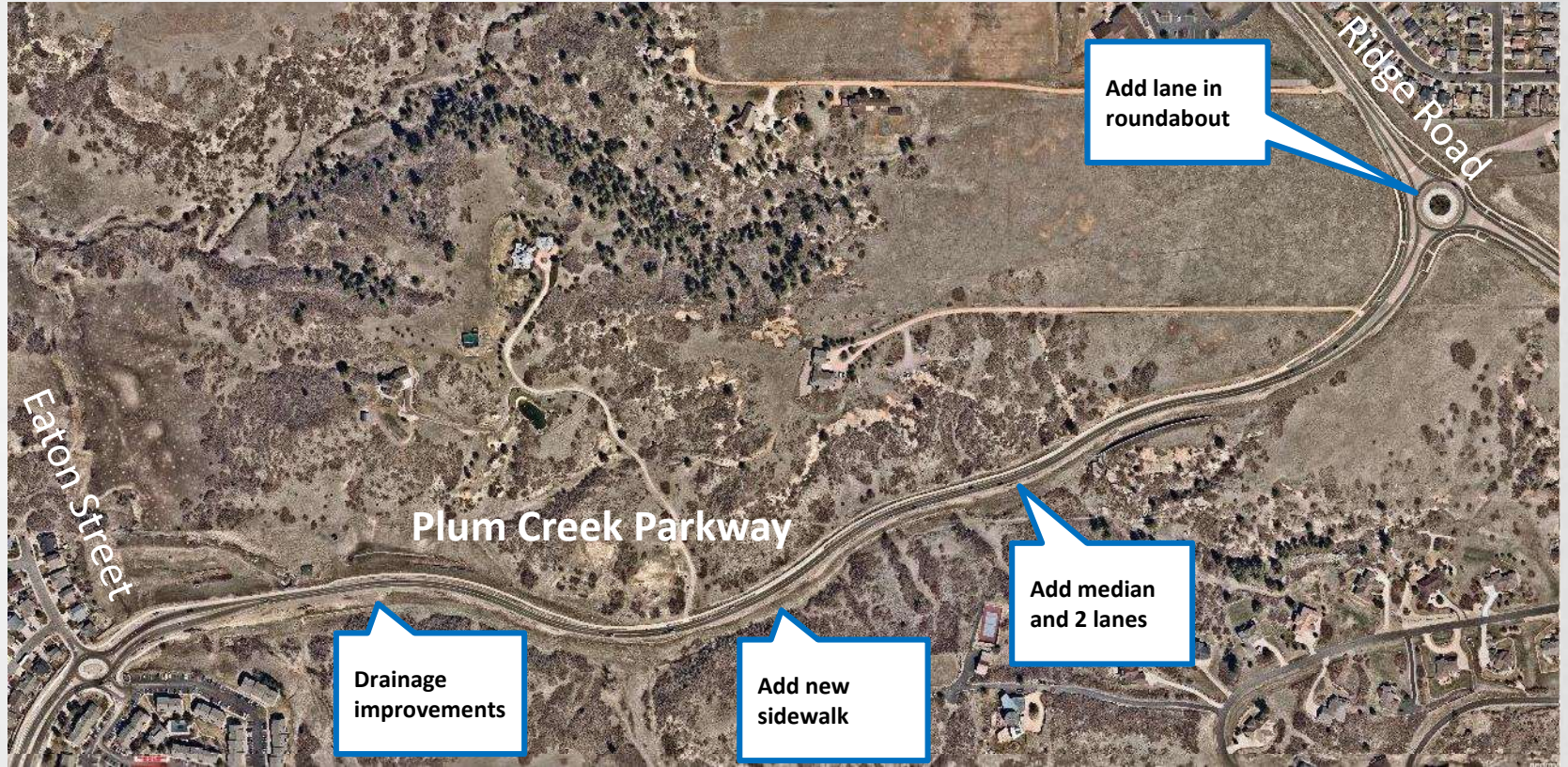
JUNE 7, 2022



PROJECT LOCATION



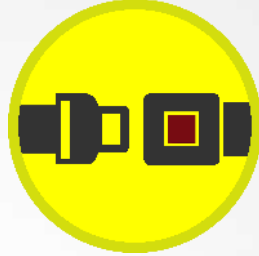
PROJECT OVERVIEW



PRIMARY AREAS OF FOCUS



PROJECT EXPECTATIONS



High Safety

- Median
- Sidewalk
- Bike lanes



Reliability

- Added lanes
- Roundabout modifications



Low Downtime

- Low traffic impact



Low Environmental Impact

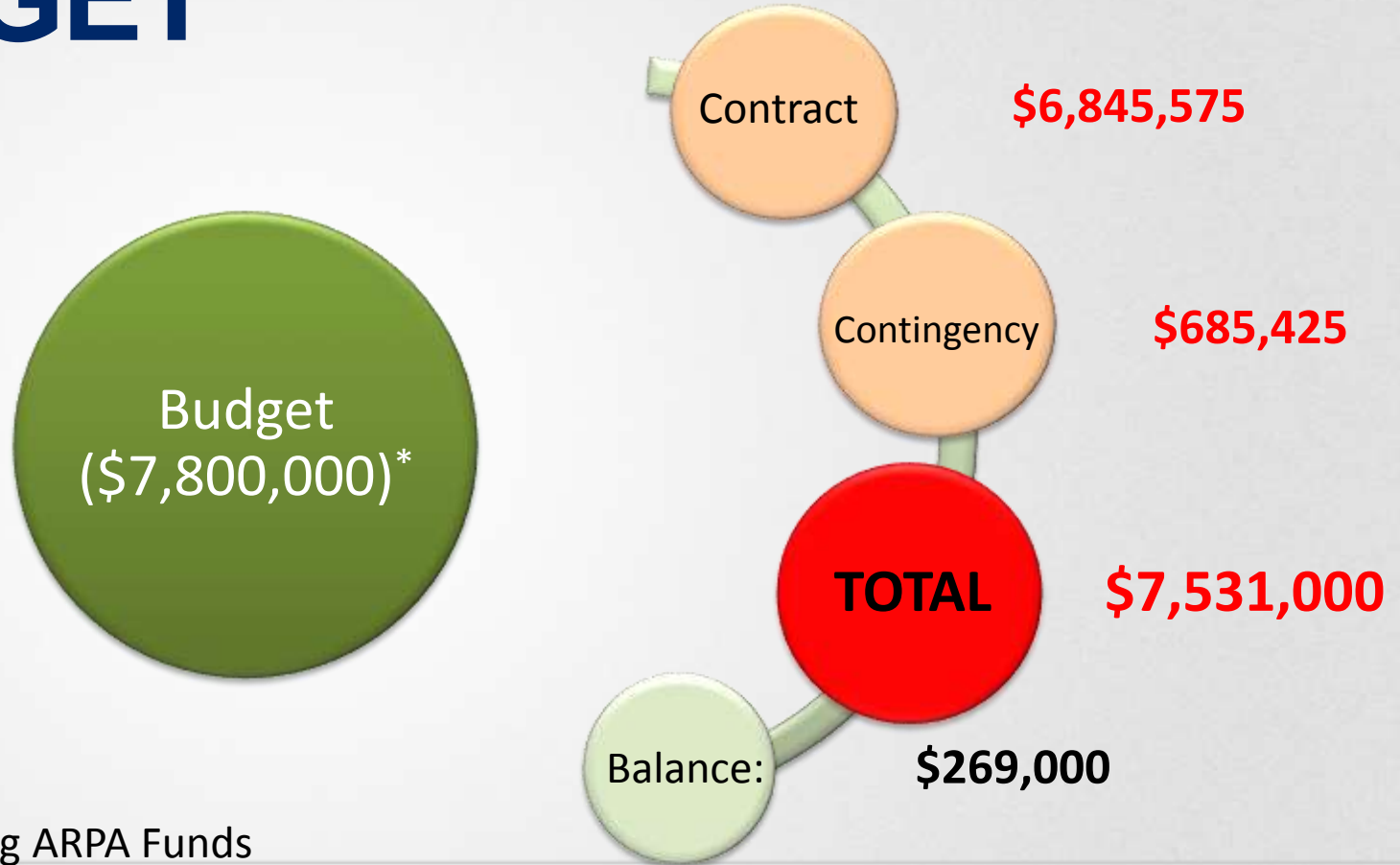
- Water quality improvements



Low Lifecycle Cost

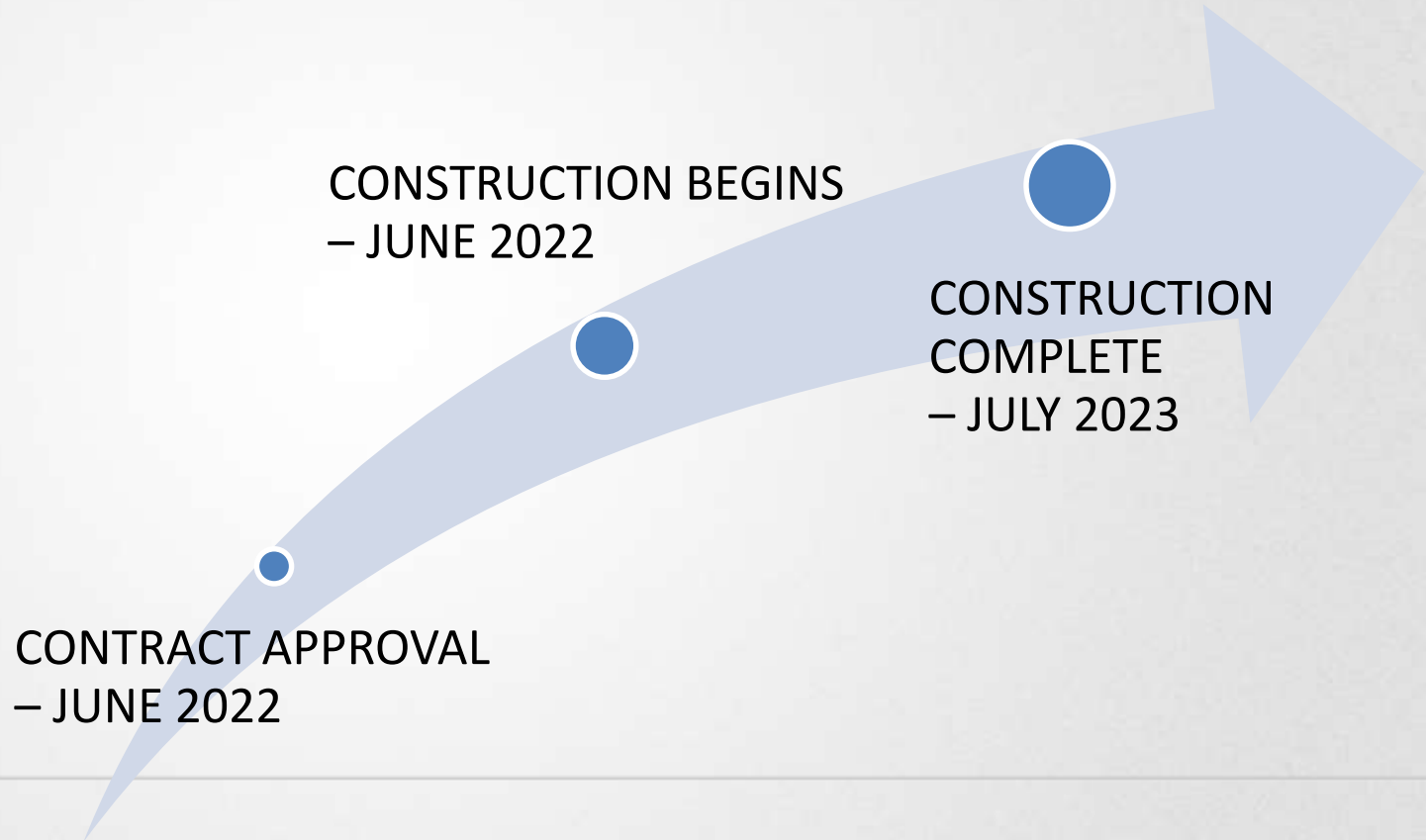
- Pavement design

BUDGET



*Including ARPA Funds

PROJECT SCHEDULE



STAFF RECOMMENDATION

Staff recommends Town Council approve the resolution as introduced by title.

PROPOSED MOTION

“I MOVE TO APPROVE THE RESOLUTION AS INTRODUCED BY TITLE.”

“I MOVE TO APPROVE THE RESOLUTION AS INTRODUCED BY TITLE WITH THE FOLLOWING CHANGES _____”

“I MOVE TO CONTINUE THIS ITEM TO A FUTURE TOWN COUNCIL MEETING DATE”



THANK YOU

QUESTIONS