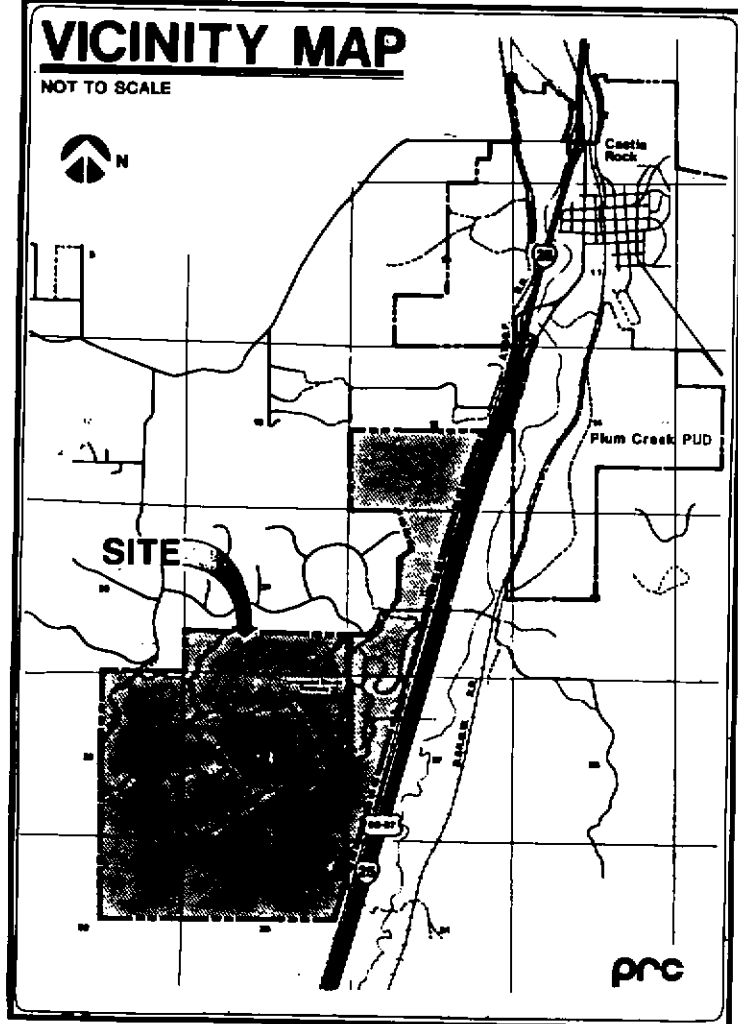
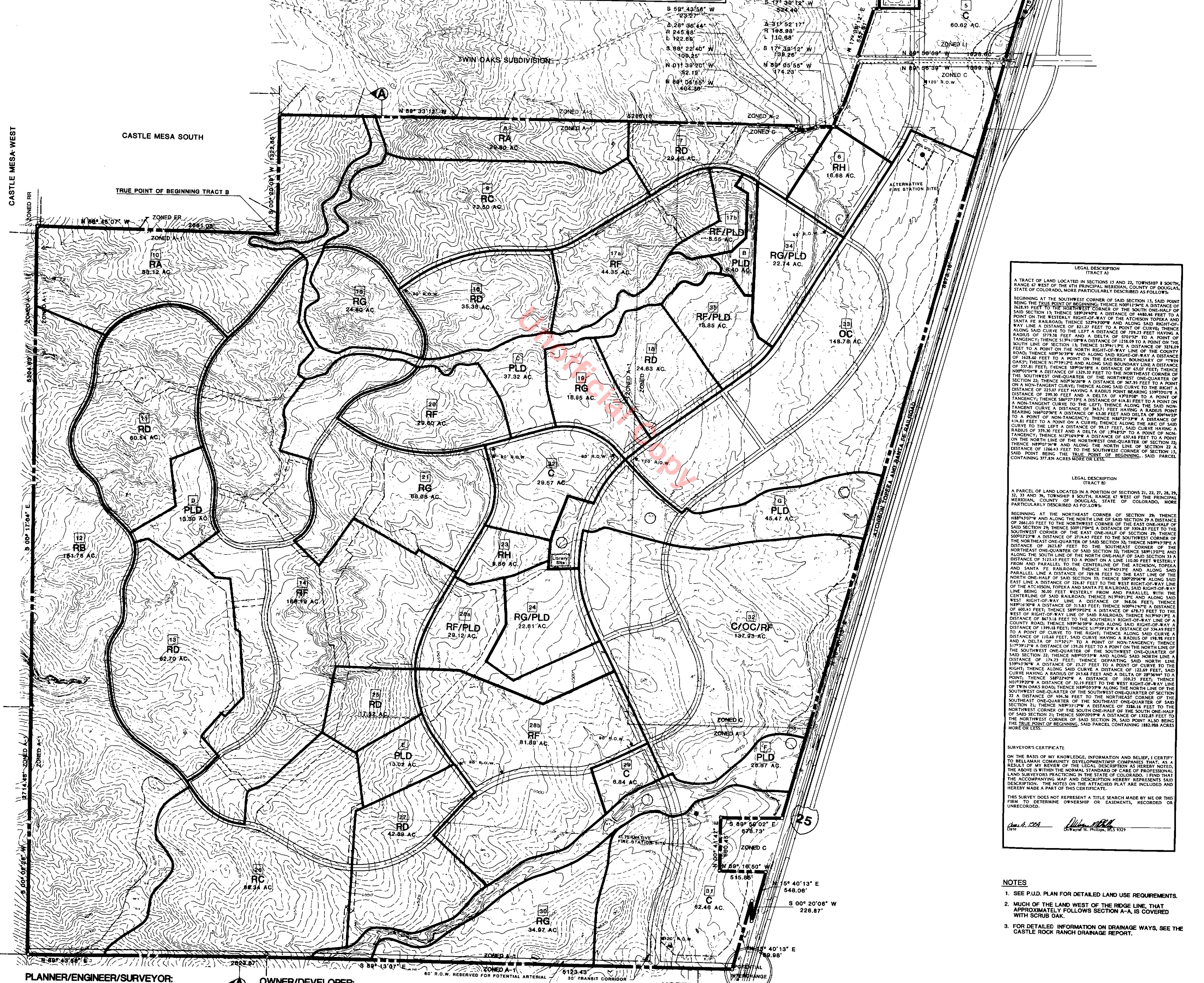


CASTLE ROCK RANCH PRELIMINARY P.U.D. PLAN



PROJECT LAND USE				
LAND USE	DENSITY	ACREAGE	D.U.'s	
RA	RESIDENTIAL-TYPE A	1.0 DU/AC	112.72	112
RB	RESIDENTIAL-TYPE B	2.5 DU/AC	161.76	404
RC	RESIDENTIAL-TYPE C	3.5 DU/AC	170.84	597
RD	RESIDENTIAL-TYPE D	5.0 DU/AC	273.06	1365
RE	RESIDENTIAL-TYPE E	7.0 DU/AC		
RF	RESIDENTIAL-TYPE F (OPTIONAL)	8.0 DU/AC (8.0)	344.60	2756
RG	RESIDENTIAL-TYPE G	10.0 DU/AC	169.41	1694
RH	RESIDENTIAL-TYPE H	20.0 DU/AC	26.54	530
C	COMMERCIAL		172.77	
OC	OFFICE/COMMERCIAL		286.71	
LI-RD	LIGHT INDUSTRIAL-RESEARCH & DEVELOPMENT		294.61	
PLD	PUBLIC LAND DEDICATION		247.82	
	SUGGESTED PRIVATE OPEN SPACE			
	POTENTIAL DETENTION POND			
	TOTAL		2260.84	7900



Approved this 14th day of August 1984, by the Planning Commission of the Town of Castle Rock.

Approved this 15th day of November 1984, by the Board of Trustees of the Town of Castle Rock.

Attest:
Richard R. Wilson
Richard R. Wilson, Town Clerk

Attest:
Phillip Melody
Phillip Melody, Chairman

Attest:
Richard R. Wilson
Richard R. Wilson, Town Clerk

Attest:
George John Kennedy
George John Kennedy, Mayor

State of Colorado
County of Douglas

I hereby certify that this plat was filed in my office on this 18th day of November, 1984 AD at 3:18 PM and was recorded per Reception Tp. 343350.

James R. Burr
James R. Burr, Deputy Clerk & Recorder