



PARKS AND RECREATION DEPARTMENT

MONTHLY REPORT FROM ROBERT C. HANNA, DIRECTOR
JUNE, 2015
PAGE 1 OF 11

UPCOMING PARKS AND RECREATION EVENTS

- **August 10-14**
 - Recreation Center closed for maintenance
- **August 10-16**
 - Recreation Center gym and racquetball courts closed
- **Saturday, August 29**
 - Pedal the Moon, family bike ride along East Plum Creek Trail, 8:30 – 10 p.m. Meet at Butterfield Park pavilion
- **Saturday, September 12**
 - Pooch Plunge, Butterfield Pool, 10 a.m. – 2 p.m.
- **Monday, September 23**
 - Volunteer Bluebird Recognition Pot luck, Public Service Training Facility, 6 - 8 p.m.



Pedal the Moon



Saturday, August 29, 2015
Meet 8:00 pm, Depart 8:30 pm
East Plum Creek Trail
Castle Rock, Colorado

Race the MAC Series

The "RACE THE MAC" series will be held on Wednesday evenings from 5-9 p.m. starting on July 15, at Philip S. Miller Park. RaceCO is the organizer of this race series. Register online at Raceco.org.

Race the MAC series
Castle Rock, Colorado
Youth Racing
Timing and Scoring
Food Trucks
Racing Classifications
WEEKLY PRIZES
Race Dates
July 15 July 22 July 29
August 5 August 12
Racing from 5-9 p.m.
Free Beer!
GRIST BREWING COMPANY
Register online : <http://www.Raceco.org>

- Race #1: July 15
- Race #2: July 22
- Race #3: July 29
- Race #4: August 5
- Race #5: August 12





PARKS AND RECREATION DEPARTMENT

MONTHLY REPORT FROM ROBERT C. HANNA, DIRECTOR
JUNE, 2015
PAGE 2 OF 11

Elephant Rock Sunrise to Sunset and Beti Bike Bash cycling races at Philip S. Miller Park

PREPARED BY SCOTT SMEETON, ATHLETICS SUPERVISOR

The new trail system at Philip S. Miller Park was a big hit this month as the Town hosted two major cycling events. The E-Rock "Sunrise to Sunset" event on June 6, which featured nearly 400 riders and the Beti Bike Bash, which had 360, all female riders, on June 13. Although traffic and parking were a challenge, both events were very organized and well managed. Permit revenue received from both events totaled more than \$4,000. Recreation provided a staff member to help manage the facilities and registration during both events. The Parks staff maintained the course as well as, trash pick-up during the day. Coordination for both of the events were conducted through the special events committee. Organizers from Elephant Rock have booked the venue for 2016 and it is likely that the Beti Bike Bash will return in 2016 as well.

Epic Adventure Tower at Philip S. Miller Park

A dedication ceremony was held on Wednesday, June 17 for both the Epic Adventure Tower and the Adventure Playground. The Epic Adventure Tower, which is owned and operated by Castle Rock Zip Lines provided the opportunity for attendees to demo the new Tower. The Mayor, Paul Donahue, took the first leap from the top of the Tower. The Tower is now open to the public. The cost for a half-day tour of the thirteen elements is \$49 for residents and \$69 for nonresidents. The Epic Adventure Tower consists of a 42' climbing wall, four rappelling stations, and a 70' eagle's nest platform with flight line. The Tower also includes a 45 degree cable drop and will combine a zip line and auto belay to provide an exciting drop to the ground below.



June Flooding

PREPARED BY RICH HAVEL, TRAILS PLANNER

Earlier this month, Castle Rock received successive days of heavy downpours, including one thunderstorm event that dropped almost four inches of rain. All of the drainages in Castle Rock flooded on June 12, including East Plum Creek, Sellars Gulch, Mitchell Gulch and Hangman's Gulch. In addition to the issues with high water flooding the trails, Town staff is responding to stream bank damage, trash accumulation, sedimentation, exposed utility lines and bridge abutments as well as natural resource damage within



the Riparian Conservation Zone identified for the endangered Preble's Meadow Jumping Mouse. Any mitigation or repair activities associated with the flooding are covered as emergency actions outlined in the Douglas County Habitat Conservation Plan, therefore, repair activities do not need to be delayed while awaiting consultations with the U.S. Fish and Wildlife Service despite the presence of endangered species habitat. The activities will be included in the Annual Report and will follow best management practices to minimize disturbance to riparian habitat.

Trail Damage Assessment

Many of the Town's drainage corridors have been impacted by above normal rainfall, which also affected several trail systems that parallel these drainages. On June 11 and 12 several segments of trail were underwater and officially closed. Following the event on June 13, staff quickly cleared debris from the trail and they were reopened to the public. In all, most of the Town's trails were not damaged, but required the removal of debris and the need to address scoured banks. In the coming weeks, parks staff will be partnering with the Storm Water Division to develop a plan to shore up drainage way banks and debris removal within the channels.



Rock Rec Camps - Youth Day Camps for Summer

Rock Recreation Camp had 137 participants in June and now has a waitlist. It's all about fun for the summer! Campers will go on at least one field trip per week, as well as swimming, hiking and other fun adventures. Camps run from 8:30 a.m. to 4 p.m. Monday through Friday in June and July.





PARKS AND RECREATION DEPARTMENT

MONTHLY REPORT FROM ROBERT C. HANNA, DIRECTOR
JUNE, 2015
PAGE 4 OF 11

Kids will keep busy at camp, with structured activities such as games, sports, crafts and experiments. Special activities will be brought in for the kids by KidzArt, the Denver Museum of Nature and Science, the Denver Zoo and more!

Bricks 4 Kidz

PREPARED BY CALLIE MENZ, YOUTH SPECIALIST

A new youth program called Bricks 4 Kidz held two camps in June and both were full and had wait lists. Bricks 4 Kidz classes provide an extraordinary atmosphere for children, where we learn, we build, we play... with LEGO® Bricks. Programs are built around their proprietary model plans, designed by engineers and architects, with exciting themes such as space, construction, and amusement parks. Their specially designed project kits and theme-based models provide the building blocks for the Bricks 4 Kidz approach to educational play.



STEP - Summer Trails Exploration Program

PREPARED BY BARBARA SPAGNUOLO, NATURAL RESOURCE SPECIALIST

STEP is a tremendous hit! As of the last week in June, more than 450 residents have registered for this new program.

The Summer Trails Exploration Program, or STEP, kicked off with the American Hiking Society's National Trails Day on Saturday, June 6 and will continue through Labor Day on Monday, September 7. Residents can sign up throughout the summer to explore Castle Rock trails and be entered to win an outdoor-themed prize. Everyone completing a registration form will get a participation gift. Additionally, a second prize drawing will be held for participants willing to submit photos at designated landmarks along the trails. Participants are encouraged to get creative and have fun with the photos.



This summer, the Parks and Recreation Department wants everyone to get outside, go for a hike and explore! There are 12 sites included in this program. For more information on this program and a list of participating trails, please visit www.CRgov.com/STEP.

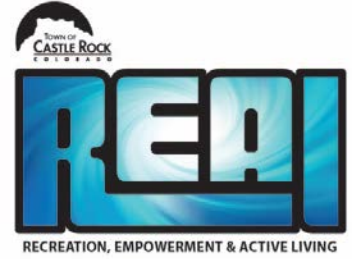


PARKS AND RECREATION DEPARTMENT

MONTHLY REPORT FROM ROBERT C. HANNA, DIRECTOR
JUNE, 2015
PAGE 5 OF 11

R.E.A.L Climb 4 Change

PREPARED BY JAMIE EGLSEDER, GROUP LEADER



REAL Mission-

"To empower citizens with disabilities to lead an active lifestyle by offering exciting recreation programs with continued commitment to compassion, independence, and inspiring new interests"

The First Inaugural Climb 4 Change was held on June 13 and a success with 100 participants! The Climb 4 Change is a race incorporating the Challenge Hill at Philip S. Miller Park. The environment at the race was electric with everyone having fun, working hard, eating good food (donated by our fantastic sponsors), dancing and cheering each other on. The Disc Jockey received a ton of compliments and definitely helped create an atmosphere the participants really seemed to enjoy.

Local businesses were very supportive and came through in a big way. There were 14 sponsors that donated \$4,300 in cash, prizes, and food. Registrations, fees, and donations collected \$3,000 and about \$700 of food and coffee were donations. The event received over \$1,000 in prizes to award the highest fundraisers!! One of the biggest goals was to raise community awareness of our R.E.A.L. program, and garner support for the participants.



Thank you to our sponsors and volunteers that helped in making this event such a great success. **Sponsors:** IREA, White Construction Group, Matthew Biviano Consulting, Matthew Fry State Farm, and Knights of Columbus #8909. **Volunteers:** TAG (Teen Advisory Group) and Castle Rock Police and Fire Departments. **Product and prize donations from the following locations:** Einstein Bagels, Santiago's, Cookies & Cream, Parry's Pizza, Walmart, Lowes, Red Hawk Ridge Golf Course, Well's Springs, Castle Rock Zip Line Tours and Miller Activity Complex.

MILLER ACTIVITY COMPLEX

Facilities

PREPARED BY MIKE KILMAN, FACILITIES SUPERVISOR

The Miller Activity Complex is a great location for summer day cares to bring children. Now that the schools are out, various centers have scheduled visits throughout the summer.



PARKS AND RECREATION DEPARTMENT

MONTHLY REPORT FROM ROBERT C. HANNA, DIRECTOR
JUNE, 2015
PAGE 6 OF 11

During the month of June, 509 kids from these centers utilized the facility. The revenue generated from their participation was \$7,176.

In comparison, the highest month for group visits was during spring break in March with 476 kids that generated \$2,268.

Allison from the "Hawks Nest" commented "The MAC is great because the kids stay busy the whole time we are there, they never get bored with all of the cool amenities that are available!"

MAC Birthday Parties

PREPARED BY MARCY JONES, YOUTH ACTIVITY COORDINATOR

June 2015 MAC Birthday Parties	
Leisure Pool / Climbing Structure	32
Trampoline	3
Trampoline + Leisure Pool / Climbing Structure	9
Jumping Castle	4
Jumping Castle + Leisure Pool / Climbing Structure	1
Sports Theme Party	2
Batting Cages	4
Bump Soccer	1
Total Birthday Parties	56
Revenue	\$11,057.00

MAC Indoor Facility Rentals and Athletics

PREPARED BY NICOLE STEHLIK, ATHLETICS SUPERVISOR

Adult Sports –

Summer registration is complete. Efforts to try some of the new, alternative sports for adults to participate in were unsuccessful. However, the interest in Adult Soccer continues to increase. Since alternative sports were offered, the summer soccer leagues were scaled down with only two offerings and still able to pull 15 teams.

Youth Sports –

Weekly youth camps have been very successful at the Miller Activity Complex, especially the Strider camps. The camps had the first successful pedal bike attempt with no training wheels after participating in a week long camp. The parents were very thrilled that the class propelled the children to understand how to balance long enough to get the pedals going.

The Jedi class this month was fun to watch as participants ran through different obstacle courses with Light Saber's protecting the Miller Activity Complex from evil forces.

June 29 through July 5 is the Bounce House Zone at the Complex, which allows all daily users to bounce around on the field for the week at no additional cost.

MAC Facility Rentals Utilization Information

While the evening rentals have slowed down, the day time reservations have picked up mostly due to the weekly camps being offered.

Weekday Prime Hours of 4 - 10 p.m.:

96 Reservations utilized 187 out of 378 hours for 49% utilization

Weekend Building Hours:

36 Reservations utilized 85 out of 288 hours for 30% utilization

- ❖ 200 total reservations
- ❖ 450 reservation hours
- ❖ 4,927 people on the fields only

Philip S. Miller Park

PREPARED BY JEFF SMULLEN, SUPERINTENDENT OF PLANNING AND CONSTRUCTION

Phase 2 Construction

The first two weeks of June continued to bring significant precipitation and flooding of the construction site. The tide is now turning, and MW Golden Constructors has regained momentum and has completed the asphalt emergency access from Wolfensberger Road, restroom utilities and flooring, and the Millhouse foundation walls, underground electrical and plumbing connections. Large deciduous trees have also been moved into the core plaza landscape beds and The Pool Company is working to install equipment for the splash pad. This work will continue through July along with the amphitheater walls, the installation of large landscape boulders as well as continued progress on completing park structures.

Use at **Philip S. Miller Park** continues to grow now that summer is here. The following information was taken from vehicle counter data:

- There was a daily average of 4,339 cars traveling into Philip S. Miller Park during the month of June





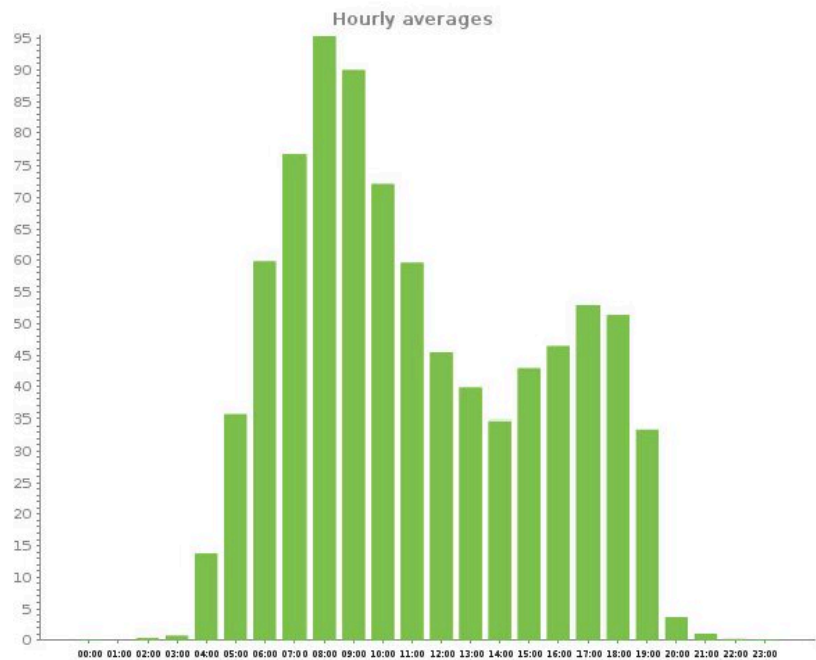
PARKS AND RECREATION DEPARTMENT

MONTHLY REPORT FROM ROBERT C. HANNA, DIRECTOR
 JUNE, 2015
 PAGE 8 OF 11

- Overall vehicle total for the month of June was 130,187 cars (up from the May monthly average of 119,317 cars)
- For the first six months of 2015, an average of more than 140,000 cars entering the park each month
- At this current pace, there could be a total of more than 1,680,000 cars coming into the park during 2015 (this is just a yearly trend estimate based on previous months' data)

Hours of the day

From 2015-06-01 to 2015-06-30
 Report generated on 2015-07-01 15:48:03 (UTC -06:00) by bs.pagnuolo@crgov.com
[TRAFx DataNet \(http://www.trafx.net/\)](http://www.trafx.net/)



Current summary of counter data from the **Miller Activity Complex**:

- 32,510 people entered the building in June (up from April and May totals)
- During June, on average there were 1,083 people entering the building on a daily basis
- Wednesdays and Saturdays are the busiest day of the week with slightly more than 1,200 people entering the building on both days
- For the first six months of 2015, an average of more than 30,000 people entering the MAC building each month
- At this current pace, we could see a total of almost 373,000 people during 2015 (this is just a yearly trend estimate based on previous months' data)

Site Name	Average	Median	STDV	Min	Max
PSM Park Trails 1 (D)	35.7	37.7	30.1	0.0	95.4

A = adjustment applied, D = divide by 2 applied, F = filtering applied

Challenge Hill:

- Monthly total for June was 25,619 (which is up from April and May totals)
- An average of 856 people used the Challenge Hill on a daily basis in June
- There has been an average of more than 20,000 people on the Challenge Hill each month for the first six months of 2015

Great Outdoors Colorado (GOCO) Grant Reimbursement

PREPARED BY BARBARA SPAGNUOLO, NATURAL RESOURCE SPECIALIST

Barbara Spagnuolo submitted the final report paperwork to Great Outdoors Colorado to receive grant reimbursement for the Philip S. Miller Park Adventure Playground project. This \$250,000 grant was awarded in June 2013 but the Town had two years to complete the project and submit the final report. An application for a Colorado Lottery Starburst Award was submitted at the end of June for this same project. Starburst Award applications are open to any entity that has completed a Lottery-funded project within the last five years. Winners are chosen based on the creativity of the project, economic and social impact on the community, and whether the project achieved its goal.

Open Space and Trail Projects

PREPARED BY RICH HAVEL, TRAILS PLANNER

Inventory of trails for Life Cycle Repair and Replacement

In a continued effort to provide safe recreational facilities to the residents of Castle Rock, staff will evaluate system wide annual inspection of our concrete trail network. In June, staff completed an inspection and report of all concrete sidewalks and trails within our established park sites. Of the ten plus miles of concrete sidewalks and trails in active park sites; approximately 0.3 miles are in need of repair or replacement. These repairs are proposed for Town Council's consideration in upcoming budget discussions. Final budget for 2016 will be approved by Town Council later this year. The proposed replacements include Founders Park, Butterfield Park and Memmen Ridge in 2016; Centennial Park in 2017; Gemstone and Mitchell Gulch parks in 2018; and Matney and Metzler Ranch parks in 2019.



Wolfensberger Pedestrian Bridge

To provide better connectivity to Philip S. Miller Park and its trail system, staff has begun to look at options of constructing a pedestrian bridge over Wolfensberger to connect the new park with both Ridgeline Open Space and The Meadows community.



PARKS AND RECREATION DEPARTMENT

MONTHLY REPORT FROM ROBERT C. HANNA, DIRECTOR

JUNE, 2015

PAGE 10 OF 11

The project design team met in June to discuss foundation design alternatives. The west bridge abutment comes close to the existing right-of-way so the team has selected a helical pier foundation to avoid any conflicts with the future roadway expansion. Finish options for the bridge structure and retaining wall systems were also discussed. The design consultant will be preparing renderings of the finished choices and associated costs in July.

Challenge Hill Improvements

The Philip S. Miller Park Challenge Hill, one of the parks most popular features, has continued to increase in use since the opening. Due to heavy use, staff along with volunteers improved the features at the bottom section of the return trail with nearly 1,000 linear feet crushed stone surfacing. Staff and volunteers will continue to improve the return trail with the same treatment throughout the summer. Additionally, staff has been looking into a series of cross-fit type obstacles and fitness stations along the return trail to allow users to gain a full-body workout as they arrive back to the bottom of the staircase. The Hill has not only allowed users the opportunity to gain an amazing physical workout, but also the ability for them to challenge themselves to achieve a mental goal of reaching the top. Features may include obstacles similar to those used by the military for physical training as well as more traditional stations such as pull up bars. The proposed challenge course will offer groups and individuals the opportunity to participate in a series of physical and mental activities. Staff will continue looking into the feasibility of such a course and evaluate if this is something users would embrace. Funding for the project may be available in 2016.

Parks, Trails and Open Space Map

PREPARED BY BARBARA SPAGNUOLO, NATURAL RESOURCE SPECIALIST

The final version of the new folding maps will likely be available to the public by mid-July. While awaiting the completion of the Town wide folding trail map, staff worked with Community Relations to update the individual trail maps available for each open space property and trail. These individual trail maps provide more specific information about each site, including trail mileage and interesting highlights. These maps can be downloaded at www.CRgov.com/trails.

Colorado Bluebird Project

PREPARED BY BARBARA SPAGNUOLO, NATURAL RESOURCE SPECIALIST

Volunteers continued to conduct their weekly checks of the bluebird nest boxes established throughout Castle Rock. The bluebird nesting season is in full swing. Volunteers are reporting new nesting attempts in many boxes immediately following the successful fledging of the first clutch of nestlings. Bluebirds will often raise two clutches of eggs in a season often starting to build the second nest the day of or the day after the first group of chicks leaves the nest.



PARKS AND RECREATION DEPARTMENT

MONTHLY REPORT FROM ROBERT C. HANNA, DIRECTOR

JUNE, 2015

PAGE 11 OF 11

Last month, the sixth clutch in a row of pink-colored eggs in a Mountain Bluebird nest at Gateway Mesa was reported. Those eggs hatched and the chicks successfully fledged from the nest in mid-June. Now, the same Mountain Bluebird female is incubating her seventh clutch of pink-colored eggs. Staff was able to confirm the female has a federal ID leg band from the 2013 CU research project at Gateway Mesa. Attempts to recapture the female and read her leg band have been unsuccessful. It is believed to be the same female that began laying pink eggs in 2013 due to bluebirds' instinctual behavior to return to the same nest box every year.

Gateway Mesa Natural Resources

PREPARED BY BARBARA SPAGNUOLO, NATURAL RESOURCE SPECIALIST

Earlier this year, staff was contacted by the Denver Botanical Gardens regarding their interest in rare or uncommon plants, mosses and lichen growing on the northern section of Gateway Mesa Open Space. The unique northern area of Gateway Mesa contains a dense forest of Douglas fir and Ponderosa pines with a similarly dense understory made up of a diversity of grasses, ferns, mosses, lichens, fungi and liverwort species. This uncommon habitat (more typical of the Pacific Northwest Region) is fed by water seeping from the top of the flat mesa. Research staff from the Botanical Gardens and the CU Museum of Natural History were made aware of this unique area following a site investigation from Colorado Open Lands staff as part of their annual Conservation Easement monitoring of the property. With Town permission, botanists surveyed the property in late June to conduct sampling and collection of native vascular and non-vascular plants that will be preserved at the Botanical Gardens herbarium for future reference and study. Among the almost 300 species surveyed, a rare moss species was discovered growing on a northern-facing cliff wall; this moss has not been documented anywhere else in Colorado, but is found on the wetter East Coast. A full site assessment with species list will be provided later this summer.