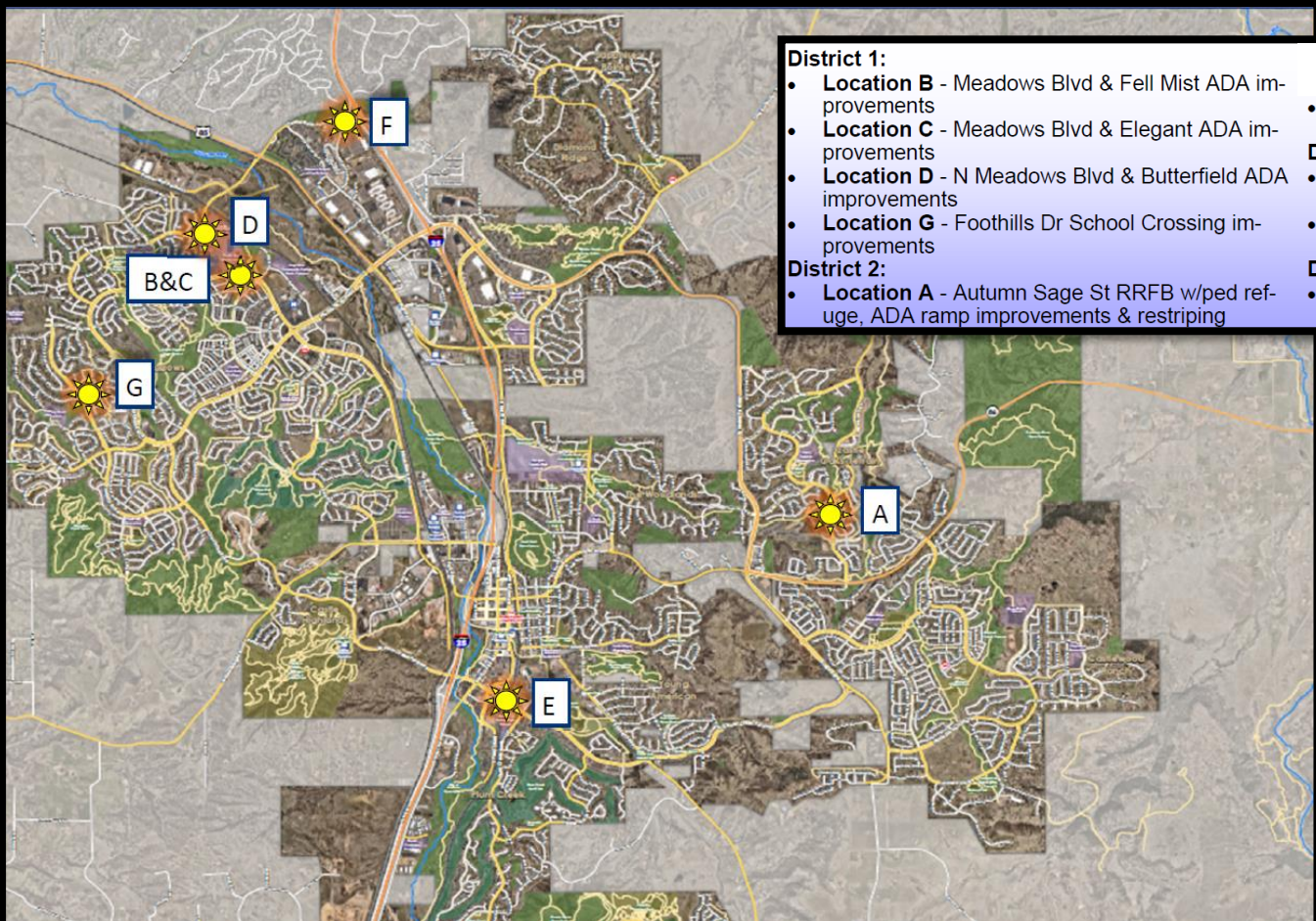


2026 SAFETY IMPROVEMENT PROGRAM OVERVIEW

APRIL 7, 2026

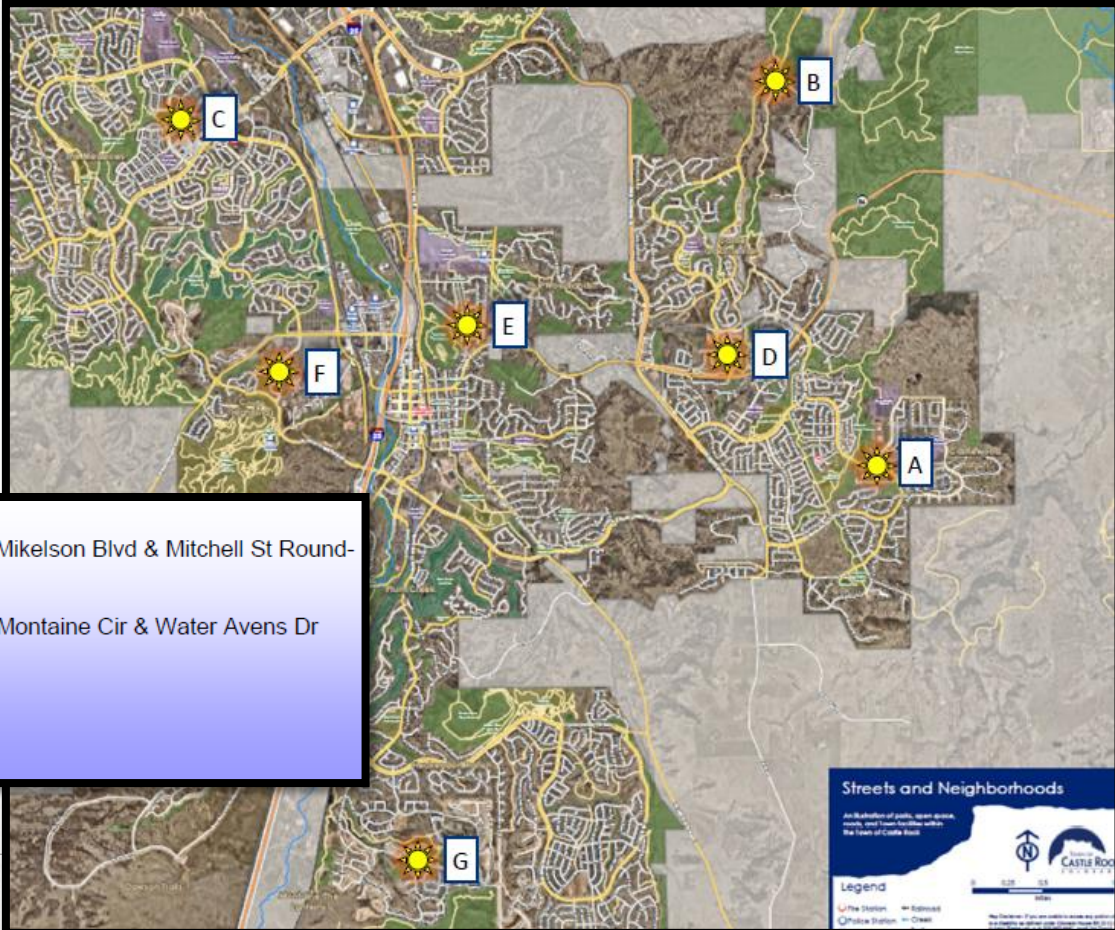


2026 PLANNED PROJECTS



- District 1:**
 - **Location B** - Meadows Blvd & Fell Mist ADA improvements
 - **Location C** - Meadows Blvd & Elegant ADA improvements
 - **Location D** - N Meadows Blvd & Butterfield ADA improvements
 - **Location G** - Foothills Dr School Crossing improvements
- District 2:**
 - **Location A** - Autumn Sage St RRFB w/ped refuge, ADA ramp improvements & restriping
- District 4:**
 - **Location E** - Plum Creek Pkwy adaptive signal timing
- District 6:**
 - **Location E** - Plum Creek Pkwy adaptive signal timing
 - **Location F** - Promenade Pkwy & Castle Rock Pkwy roundabout lane reconfiguration

2026 RRFB PLANNED PROJECTS



- District 2:**
 - **Location B** - Castle Oaks Drive & McMurdo Trl
 - **Location D** - Autumn Sage St & Long Brush Dr
- District 3:**
 - **Location C** - N Meadows Drive & Saffron Dr
 - **Location F** - Auburn Dr & Reserve at Castle Highlands
- District 4:**
 - **Location E** - Canyon Dr & Rock Park/DCHS Path

- District 5:**
 - **Location A** - Mikelson Blvd & Mitchell St Roundabout
- District 6:**
 - **Location G** - Montaine Cir & Water Avens Dr

Streets and Neighborhoods

An illustration of public space, streets, trails, and transit facilities within the Town of Castle Rock.

Legend

- The Station
- Railroad
- Police Station
- OSM

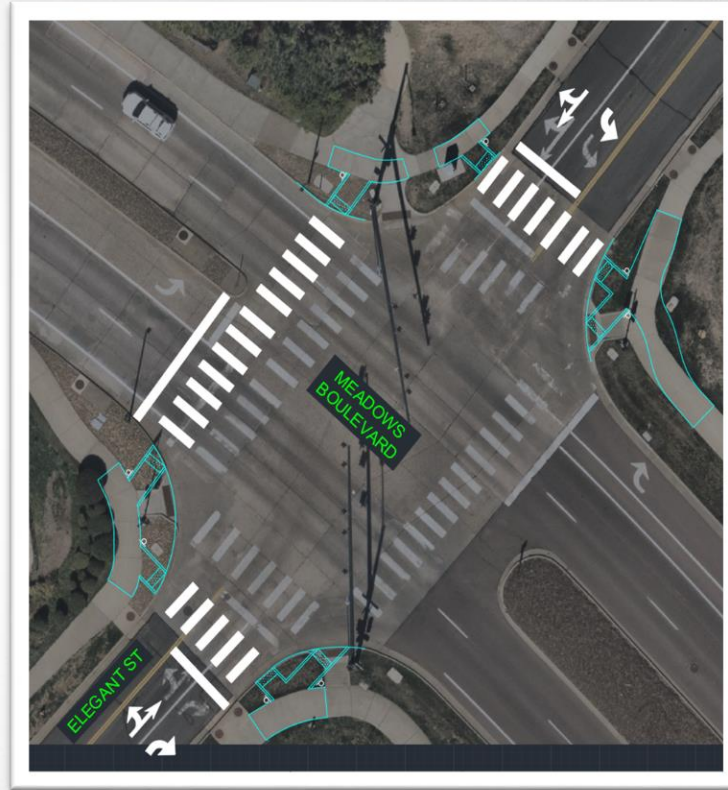
Scale: 0 500 1000 feet

Map created by the Town of Castle Rock Planning Department, 2024.

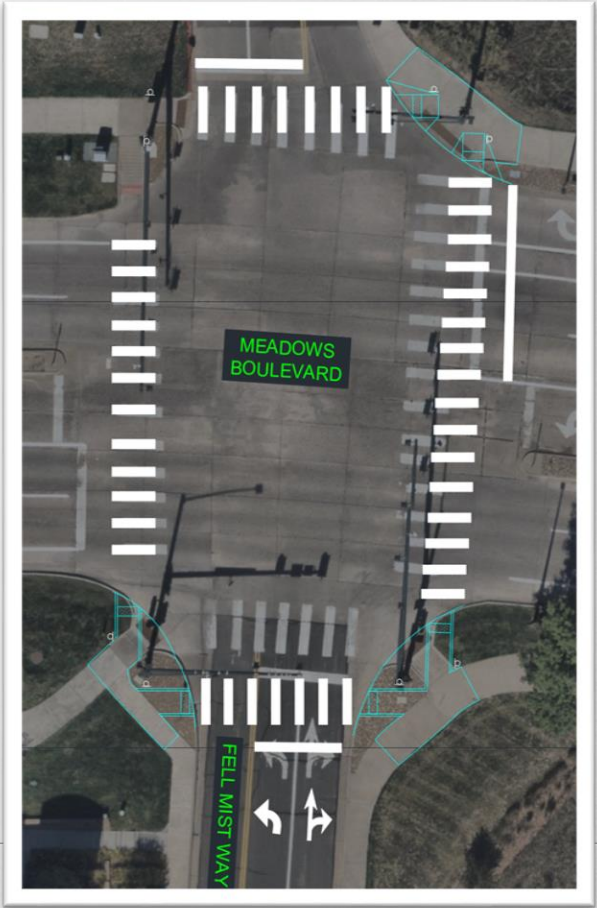
N. MEADOWS DR & BUTTERFIELD CROSSING DR



MEADOWS BLVD & ELEGANT ST



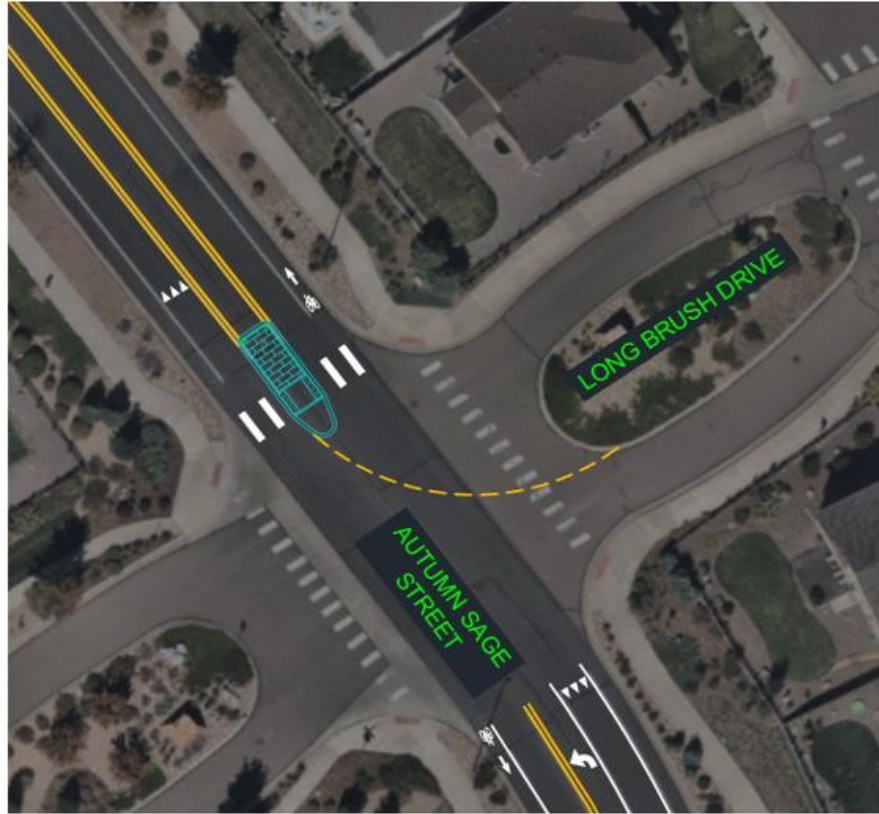
MEADOWS BLVD & FELL MIST WAY



PLUM CREEK PKWY



AUTUMN SAGE ST & LONG BRUSH DR



PROMENADE PKWY ROUNDABOUT

