

CONCEPT PLANT SCHEDULE	
EXISTING DECIDUOUS SHADE TREES - MODERATE HYDROZONE	28
LARGE CANOPY DECIDUOUS SHADE TREES SHALL BE A MINIMUM OF 2" INCH IN CALIPER MEASURED SIX (6) INCHES ABOVE GROUND. LARGE CANOPY DECIDUOUS SHADE TREES SHALL BE A MINIMUM OF 3" INCH IN CALIPER WHEN IN A GRATE, OR PLANTED IN AREAS LESS THAN EIGHT (8) FEET IN WIDTH.	
PROPOSED DECIDUOUS SHADE TREES - MODERATE HYDROZONE	16
LARGE CANOPY DECIDUOUS SHADE TREES SHALL BE A MINIMUM OF 2" INCH IN CALIPER MEASURED SIX (6) INCHES ABOVE GROUND. LARGE CANOPY DECIDUOUS SHADE TREES SHALL BE A MINIMUM OF 3" INCH IN CALIPER WHEN IN A GRATE, OR PLANTED IN AREAS LESS THAN EIGHT (8) FEET IN WIDTH.	
DECIDUOUS FLOWERING TREES - MODERATE HYDROZONE	4
ORNAMENTAL AND FLOWERING TREES SHALL BE A MINIMUM OF 1 1/2" INCH IN CALIPER MEASURED SIX (6) INCHES ABOVE GROUND.	
EVERGREEN TREES - LOW HYDROZONE	15
EVERGREEN TREES SHALL BE A MINIMUM OF SIX (6) FEET TALL, MEASURED TO THE MID-POINT OF THE MOST RECENT YEAR'S GROWTH.	
SMALL EVERGREEN TREES - LOW HYDROZONE	17
EVERGREEN TREES SHALL BE A MINIMUM OF SIX (6) FEET TALL, MEASURED TO THE MID-POINT OF THE MOST RECENT YEAR'S GROWTH.	
SHRUB/ ORNAMENTAL GRASSES/ PERENNIAL PLANTING BEDS - LOW HYDROZONE	8,800 SF
SHRUBS SHALL BE A MINIMUM OF FIVE (5) GALLON CONTAINER IN SIZE ORNAMENTAL GRASSES SHALL BE A MINIMUM OF FIVE (5) GALLON CONTAINER IN SIZE PERENNIALS, GROUND COVERS, AND VINES SHALL BE A MINIMUM OF ONE (1) GALLON CONTAINER IN SIZE	
EXISTING PLANTING BEDS W/ ROCK MULCH - LOW HYDROZONE	7,850 SF
SHRUBS SHALL BE A MINIMUM OF FIVE (5) GALLON CONTAINER IN SIZE ORNAMENTAL GRASSES SHALL BE A MINIMUM OF FIVE (5) GALLON CONTAINER IN SIZE PERENNIALS, GROUND COVERS, AND VINES SHALL BE A MINIMUM OF ONE (1) GALLON CONTAINER IN SIZE	
ANNUAL COLOR - MODERATE HYDROZONE	595 SF
ANNUALS SHALL BE SIZED TO BE APPROPRIATE TO APPLICATION, WETHER FLATS, FOUR (4) INCH POTS OR LARGER AND SPACED TO PROVIDE SEVENTY-FIVE (75) PERCENT GROUND COVER.	
NATIVE SEED - LOW HYDROZONE	6,070 SF
<b>NATIVE GRASS SEED MIX</b> 10% BROWN TOP SEED MIXTURE 20% BROWN TOP SEED MIXTURE 20% BROWN TOP SEED MIXTURE 20% BROWN TOP SEED MIXTURE 10% BROWN TOP SEED MIXTURE 10% BROWN TOP SEED MIXTURE	

CONCEPT HARDSCAPE MATERIAL SCHEDULE	
GREY CONCRETE W/ BROOM FINISH	5,095 SF
NEW CONCRETE: 2,320 SF EXISTING CONCRETE (PARKING LOT AND SIDEWALK): 2,955 SF	
NATURAL STONE PATIOS	6,200 SF
3/8" CHIPPED GRANITE	2,755 SF
2-4" WASHED RIVER ROCK IN DRAINAGE SWALE	1,410 SF
SITE BOULDERS	
BUFF BOULDERS - 39 TOTAL	
BUFF SLAB BENCH BOULDERS - 10 TOTAL	
CUSTOM STEEL GAS TORCH	
CUSTOM STEEL GAS TORCH ALONG FENCE (9 TOTAL) - REFER TO SHEET 9, DETAIL B	
CUSTOM STEEL GAS TORCH AT ENTRY (4 TOTAL) - REFER TO SHEET 9, DETAIL B	
GAS FIRE PIT	
REFER TO SHEET 9, DETAIL C	
PARTITION FENCING AND GATE (MATCH LA LOMA)	
435 LF	
REFER TO SHEET 9, DETAIL A	

## TOWN OF CASTLE ROCK LANDSCAPE NOTES

- INSTALLING CONTRACTOR SHALL CONTACT CASTLE ROCK WATER AT 720.733.6017 TO SCHEDULE A PRE-CONSTRUCTION MEETING BEFORE BEGINNING THE INSTALLATION OF THE LANDSCAPING.
- LANDSCAPE AND IRRIGATION SHALL BE INSTALLED BY A TOWN OF CASTLE ROCK REGISTERED LANDSCAPE CONTRACT PROFESSIONAL.
- SOIL INSPECTION IS REQUIRED BEFORE PLANT INSTALLATION AND SCHEDULING SOIL INSPECTION SHOULD BE DISCUSSED AT THE LANDSCAPE PRE-CONSTRUCTION MEETING.
- INSTALLING CONTRACTOR IS TO PROVIDE SUBMITTAL FROM SUPPLIERS FOR SOD AND NATIVE SEED MIX AT TIME OF LANDSCAPE INSPECTION.
- SOIL AMENDMENT SHALL BE A MINIMUM OF FOUR (4) CUBIC YARDS OR ORGANIC MATTER PER ONE-THOUSAND SQUARE FEET. THE SOIL AMENDMENT SHALL BE ROTOTILLED TO A DEPTH OF SIX (6) INCHES. CLASS I OR CLASS II COMPOST IS REQUIRED.
- TREES, LARGE SHRUBS AND PERMANENT OBJECTS ARE NOT PERMITTED IN WATER, SANITARY AND STORM SEWER UTILITY EASEMENTS.
- ALL LANDSCAPE IS TO BE INSTALLED PER TOWN OF CASTLE ROCK PLANTING DETAILS.
- PLANTING SPECIES AND LOCATION SHOULD FOLLOW THE APPROVED PLAN, IF SITE CONDITIONS OR PLANT AVAILABILITY REQUIRE CHANGES TO THE PLAN, CONTRACTOR MUST OBTAIN APPROVAL FROM THE TOWN OF CASTLE ROCK AND THE OWNER'S REPRESENTATIVE.
- TOWN OF CASTLE ROCK IS NOT RESPONSIBLE FOR REPLACING LANDSCAPE OR IRRIGATION REMOVED IN UTILITY EASEMENTS DUE TO UTILITY LINE MAINTENANCE OR REPAIR (PWR 14.3.13)
- TOWN PERMIT AND TOWN APPROVED LANDSCAPE PLANS ARE REQUIRED ON SITE DURING INSTALLATION OR THE LANDSCAPE AND IRRIGATION.
- TOWN INSPECTORS WILL NOT APPROVE LANDSCAPE AND OVERHEAD IRRIGATION ON SLOPES STEEPER THAN 3:1.
- OVERHEAD IRRIGATION IS NOT PERMITTED ON SLOPES EQUAL TO 3:1 OR IN AREAS LESS THAN 10' IN WIDTH.

## TREE GRATE NOTE

- TREES PLANTED IN TREE GRATES, WITHIN CONTAINED IMPERVIOUS AREAS, MUST USE CU STRUCTURAL SOIL IF GRATE/ PLANTING AREA PROVIDED IS LESS THAN 8'x8'.

THIS DOCUMENT IS THE PROPERTY OF DESIGNS BY SUNDOWN AND SHOULD NOT BE REPRODUCED, COPIED, OR USED FOR INSTALLATION PURPOSES, IN WHOLE OR IN PART, WITHOUT THE CONSENT OF DESIGNS BY SUNDOWN. - UPDATED 2020

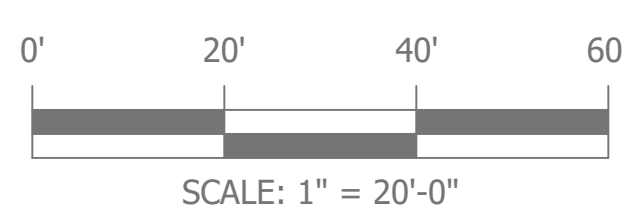


**DESIGNS BY SUNDOWN**  
LANDSCAPE ARCHITECTURE & CONSTRUCTION  
6875 S. SANTA FE DRIVE  
LITTLETON, CO 80120  
TEL: (303) 789-4400  
FAX: (303) 789-4417  
www.designsbysundown.com

# THE BRINKERHOFF & BAR HUMMINGBIRD

CASTLE ROCK PROMENADE, BLOCK 2  
CASTLE ROCK, COLORADO 80108

## CONCEPTUAL LANDSCAPE SITE PLAN



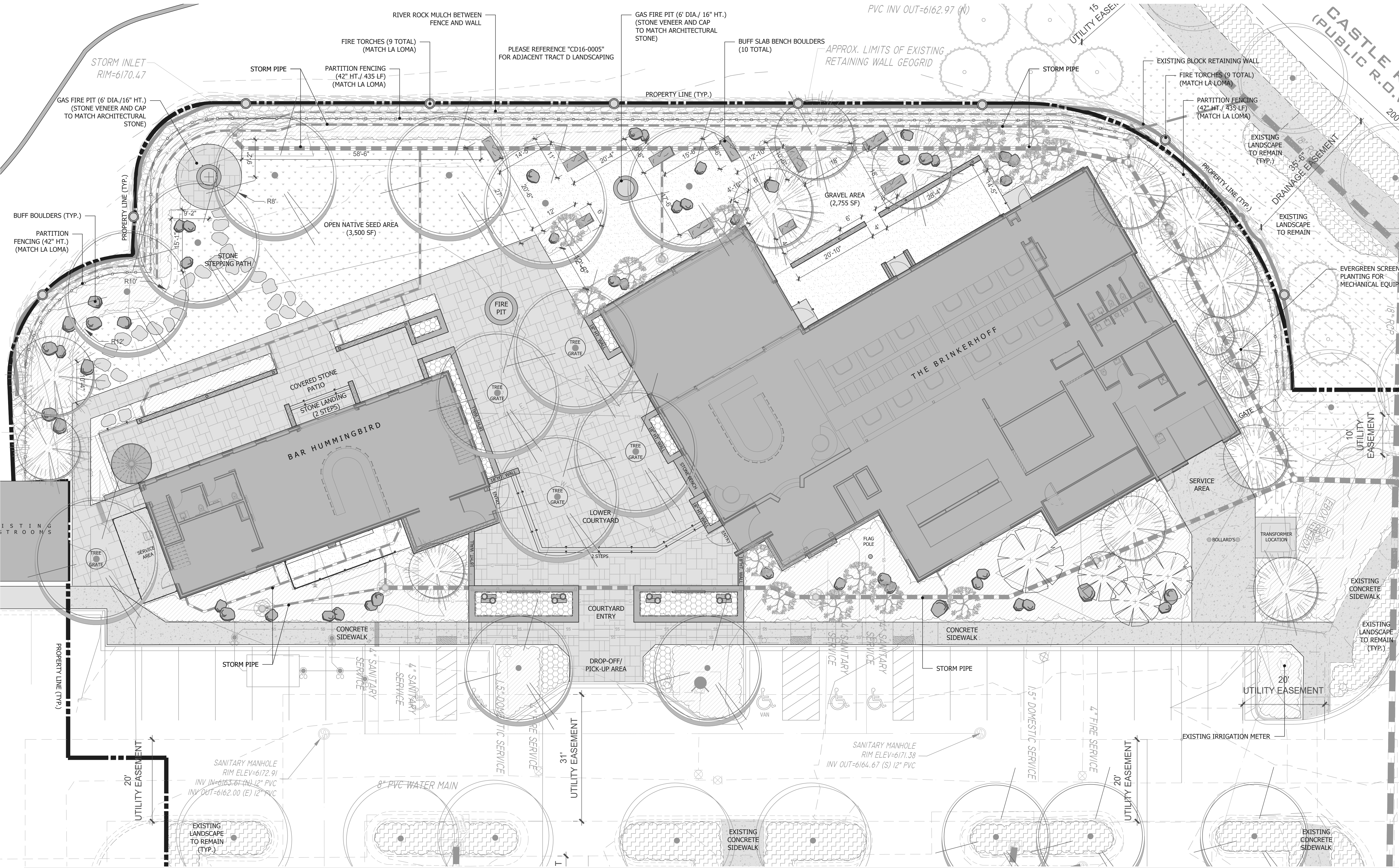
DESIGN BY: KEVEN WINKELMANN  
DRAWN BY: KW

**NOTE:** ALL NECESSARY PERMITS TO BE OBTAINED BY CONTRACTOR

DATE	2022.08.31
REVISIONS	2022.11.21
	2023.02.22
	2023.03.20
	2023.04.17
	---







THIS DOCUMENT IS THE PROPERTY OF DESIGNS BY SUNDOWN AND SHOULD NOT BE REPRODUCED, COPIED, OR USED FOR INSTALLATION PURPOSES, IN WHOLE OR IN PART, WITHOUT THE CONSENT OF DESIGNS BY SUNDOWN. - UPDATED 2020

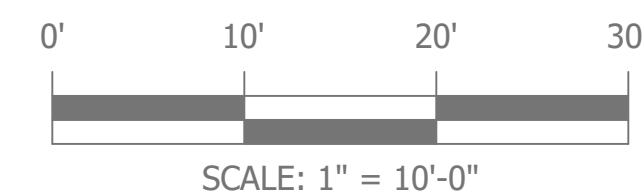


**DESIGNS BY SUNDOWN**  
LANDSCAPE ARCHITECTURE & CONSTRUCTION  
6875 S. SANTA FE DRIVE  
LITTLETON, CO 80120  
TEL: (303) 789-4400  
FAX: (303) 789-4417  
www.designsbysundown.com

# THE BRINKERHOFF & BAR HUMMINGBIRD

CASTLE ROCK PROMENADE, BLOCK 2  
CASTLE ROCK, COLORADO 80108

## CONCEPTUAL LANDSCAPE ENLARGEMENT PLAN



DESIGN BY: KEVEN WINKELMANN  
DRAWN BY: KW

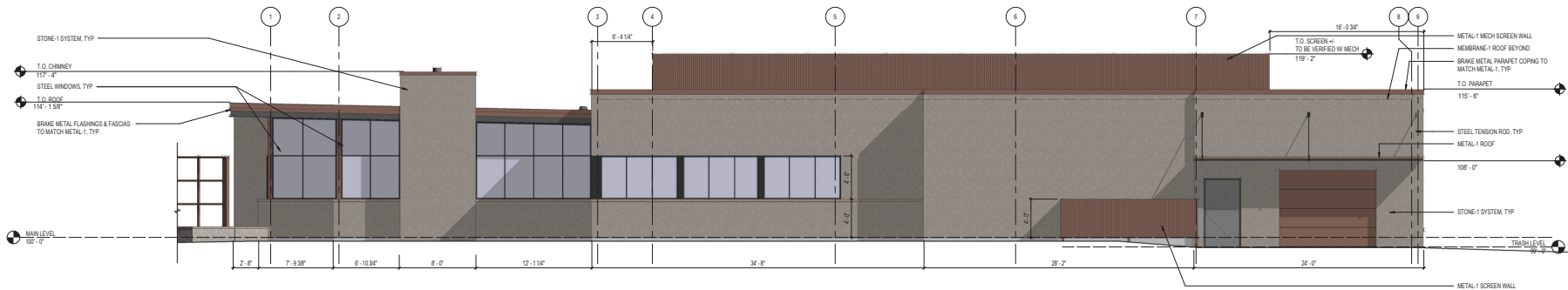
**NOTE:** ALL NECESSARY PERMITS TO BE OBTAINED BY CONTRACTOR

DATE  
REVISIONS

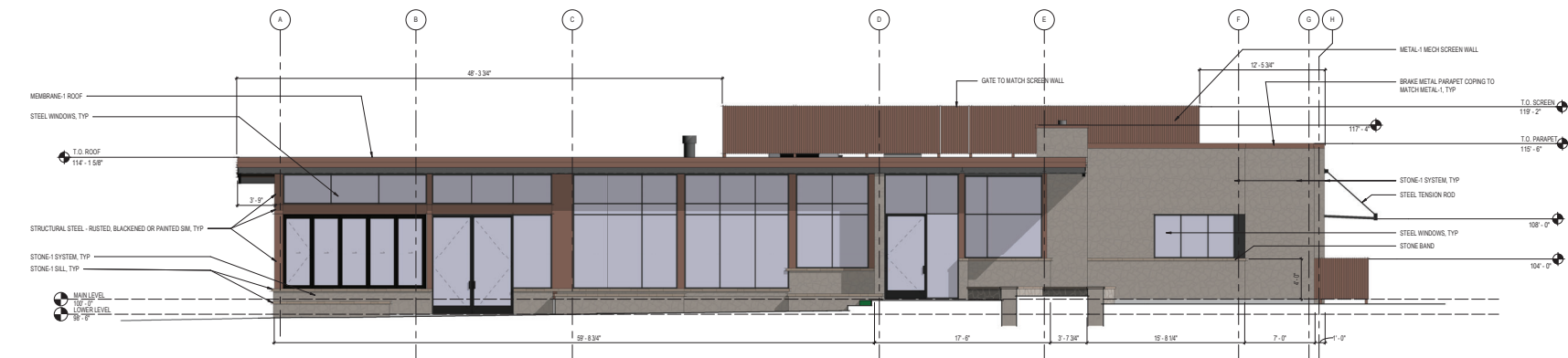
2022.08.31  
2022.11.21  
2023.02.22  
2023.03.20  
2023.04.17



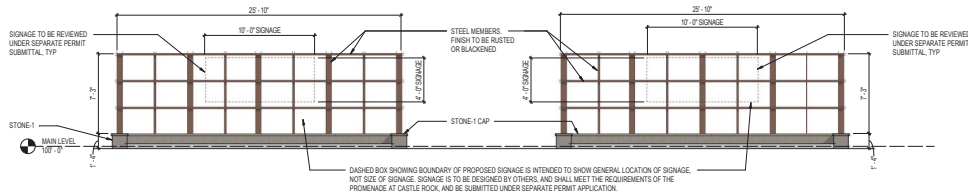




1 EXTERIOR ELEVATION - BRINKERHOFF EAST  
3/16" = 1'-0"



2 EXTERIOR ELEVATION - BRINKERHOFF SOUTH  
3/16" = 1'-0"



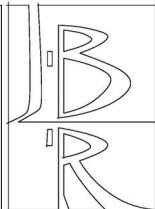
3 EXTERIOR ELEVATION - MONUMENT SIGN  
3/16" = 1'-0"

**BASIS-OF-DESIGN PRODUCT SPECIFICATIONS - EXTERIOR**

ALL SELECTIONS ARE PRELIMINARY, & SHALL BE VERIFIED BY SUBMITTAL OF PHYSICAL SAMPLE SUBJECT TO OWNER APPROVAL. EQUAL SUBSTITUTIONS ARE ALLOWED IF APPROVED BY OWNER OR ARCHITECT.

SCHEDULE ABBREVIATION	PRODUCT CATEGORY	MANUFACTURER	SERIES & DESCRIPTION	COLOR & FINISH	NOTES
METAL-1	CORRUGATED STEEL ROOF & WALL PANELS	WESTERN STATES METAL ROOFING www.westernstatesmetalroofing.com	PROFILE: 11" CORRUGATED SUBSTRATE: A886-4 Corten GAUGE: 20 FASTENERS: EXPOSED, REF. INSTALLATION INSTRUCT. FIRE RESISTANCE: CLASS A, PER UL 790	A886-4 Corten	
MEMBRANE-1	TPO MEMBRANE ROOF	GAF EverGuard OR EQUAL	60mil FULLY ADHERED W/ EPS 30-YEAR LIMITED WARRANTY		
PNT-EXT-1	PAINT	SHERWIN WILLIAMS OR BAHR			
PNT-EXT-2	PAINT	SHERWIN WILLIAMS OR BAHR			

SCHEDULE ABBREVIATION	PRODUCT CATEGORY	MANUFACTURER	SERIES & DESCRIPTION	COLOR & FINISH	NOTES
STONE-1	NATURAL THIN STONE VENEER - RUBBLE FIELD		NATURAL CANTERA NOW 2" THICK & RANDOM FACE SIZES	COLOR: PINK CLARO FINISH: RUSTICO REGULAR	
STONE-2	NATURAL STONE VENEER - DRESSED SURROUNDS		NATURAL CANTERA NOW 2" - 3" THICK FACE SIZES AS SHOWN ON DRAWINGS		
WINDOW-1	STEEL WINDOW SYSTEM	BLISS NORAM	T3000 SERIES, THERMALLY BROKEN FIT 1" INSULATED GLASS UNIT GL-1 & GL-2	BLACKENED	1. CONTRACTOR FIELD FABRICATED THERMALLY BROKEN WINDOW ASSEMBLY AS ALTERNATE 2. COORDINATE SYSTEM W/ ADJACENT DOORS AS SCHEDULED.
WP-1	SPRAY-APPLIED WATERPROOFING SYSTEM W/ DRAINAGE MAT	TREMO	TUFFALO DR H-8 SYSTEM 1. SPRAY-APPLIED FLEXIBLE WATERPROOFING MEMBRANE 2. 18" WARM-IN OR FOUNDATION BOARD 3. DRAINAGE STRIP DRAIN		1. NO SUBSTITUTIONS ALLOWED 2. APPLY WHEREVER FINISH FLOOR IS LOCATED BELOW FINISH GRADE, & EXTEND HORIZ 18" BEYOND THOSE EXTENTS. APPLY PER WP'S WRITTEN INSTRUCTIONS & EXTEND TO B.O. FOOTING.



**J : BROWN : RIGG**  
**architecture**

40 N Main Street, Cedar City, Utah 84720  
www.jbrwrigg.com  
435.590.3577

THE BRINKERHOFF

CASTLE ROCK PROMENADE BLOCK 2  
6373 PROMENADE PARKWAY  
CASTLE ROCK, CO

EXTERIOR ELEVATIONS

SDP revision 2

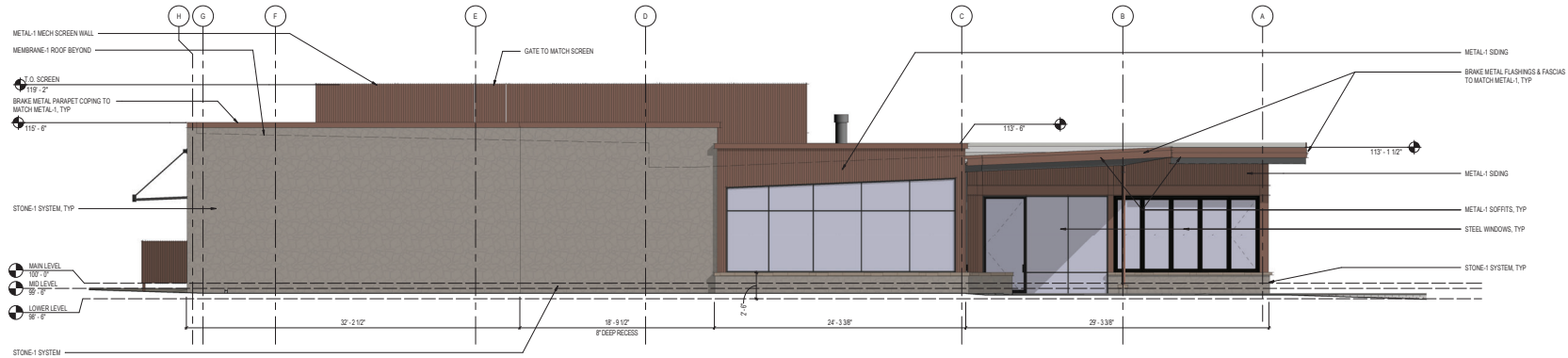
REVISION DESCRIPTION DATE

PROJECT # 2022-4  
DATE 3-17-2023

SHEET # 14 OF 18



1 EXTERIOR ELEVATION - BRINKERHOFF WEST  
3/16" = 1'-0"



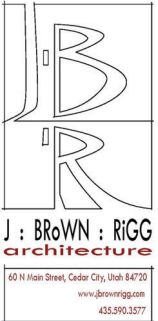
2 EXTERIOR ELEVATION - BRINKERHOFF NORTH  
3/16" = 1'-0"

#### **BASIS-OF-DESIGN PRODUCT SPECIFICATIONS - EXTERIOR**

ALL SELECTIONS ARE PRELIMINARY, & SHALL BE VERIFIED BY SUBMITTAL OF PHYSICAL SAMPLE SUBJECT TO OWNER APPROVAL. EQUAL SUBSTITUTIONS ARE ALLOWED IF APPROVED BY OWNER OR ARCHITECT.

SCHEDULE ABBREVIATION	PRODUCT CATEGORY	MANUFACTURER	SERIES & DESCRIPTION	COLOR & FINISH	NOTES
METAL-1	CORRUGATED STEEL ROOF & WALL PANELS	WESTERN STATES METAL ROOFING www.westernstatesmetalroofing.com	PROFILE: 118" CORRUGATED SUBSTRATE: A884-Corten GAUGE: 20 FASTENERS: EXPOSED, REF. INSTALLATION INSTRUCT. FIRE RESISTANCE: CLASS A, PER UL 790	A884-Corten	
MEMBRANE-1	TPO MEMBRANE ROOF	GAF EverGuard OR EQUAL	60mil FULLY ADHERED W/ EPS 30-YEAR LIMITED WARRANTY		
PNT-EXT-1	PAINT	SHERWIN WILLIAMS OR BAHR			
PNT-EXT-2	PAINT	SHERWIN WILLIAMS OR BAHR			

SCHEDULE ABBREVIATION	PRODUCT CATEGORY	MANUFACTURER	SERIES & DESCRIPTION	COLOR & FINISH	NOTES
STONE-1	NATURAL THIN STONE VENEER - RUBBLE FIELD		NATURAL CANTENA NOW 2" THICK & RANDOM FACE SIZES	COLOR: PINK CLARO FINISH: RUSTICO IRREGULAR	
STONE-2	NATURAL STONE VENEER - DRESSED SURROUNDS		NATURAL CANTENA NOW 2" - 3" THICK FACE SIZES AS SHOWN ON DRAWINGS		
WINDOW-1	STEEL WINDOW SYSTEM	BLISS NORAM	T3000 SERIES, THERMALLY BROKEN FIT 1" INSULATED GLASS UNIT GL-1 & GL-2	BLACKENED	1. CONTRACTOR FIELD FABRICATED THERMALLY BROKEN WINDOW ASSEMBLY AS ALTERNATE. 2. COORDINATE SYSTEM W/ ADJACENT DOORS AS SCHEDULED.
WP-1	SPRAY-APPLIED WATERPROOFING SYSTEM W/ DRAINAGE MAT	TREMCO	TUFFALO DR H-8 SYSTEM 1. APPLY APPLIED FLEXIBLE WATERPROOFING MEMBRANE 2. 18" WARM IN OR FOUNDATION BOARD 3. DrainStar STRIP DRAIN		1. NO SUBSTITUTIONS ALLOWED. 2. APPLY WHEREVER FINISH FLOOR IS LOCATED BELOW FINISH GRADE, & EXTEND HORIZ 18" BEYOND THOSE EXTENTS. APPLY PER WR'S WRITTEN INSTRUCTIONS & EXTEND TO B.O. FOOTING.



THE BRINKERHOFF

CASTLE ROCK PROMENADE BLOCK 2  
6373 PROMENADE PARKWAY  
CASTLE ROCK, CO

EXTERIOR ELEVATIONS

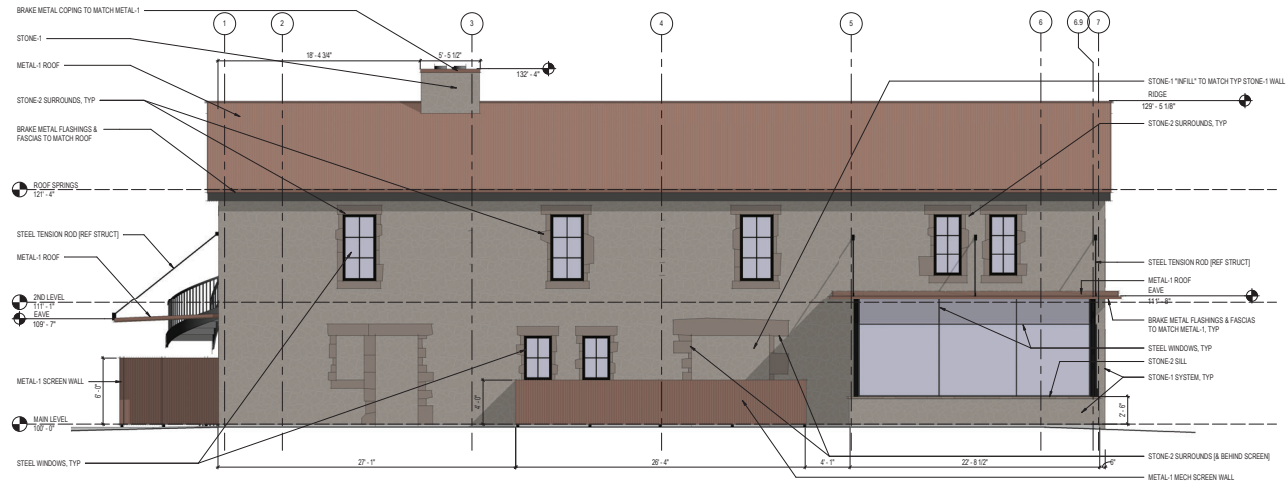
SDP revision 2

REVISION DESCRIPTION DATE

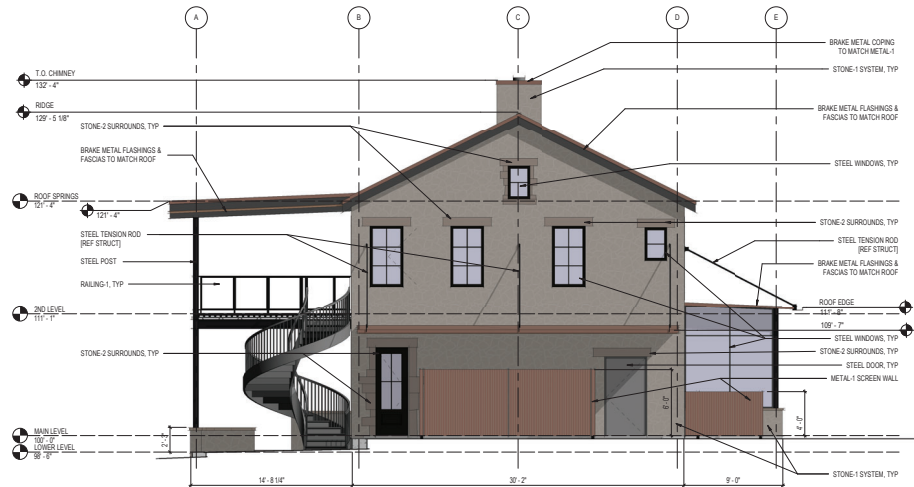
PROJECT # 2022-4  
DATE 2-17-2023

SHEET #

15 OF 18



1 EXTERIOR ELEVATION - BAR HUMMINGBIRD EAST  
3/16" = 1'-0"



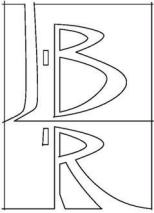
2 EXTERIOR ELEVATION - BAR HUMMINGBIRD SOUTH  
3/16" = 1'-0"

#### BASE OF DESIGN PRODUCT SPECIFICATIONS - EXTERIOR

ALL SELECTIONS ARE PRELIMINARY, & SHALL BE VERIFIED BY SUBMITTAL OF PHYSICAL SAMPLE SUBJECT TO OWNER APPROVAL. EQUAL SUBSTITUTIONS ARE ALLOWED IF APPROVED BY OWNER OR ARCHITECT.

SCHEDULE ABBREVIATION	PRODUCT CATEGORY	MANUFACTURER	SERIES & DESCRIPTION	COLOR & FINISH	NOTES
METAL-1	CORRUGATED STEEL ROOF & WALL PANELS	WESTERN STATES METAL ROOFING www.westernstatesmetalroofing.com	PROFILE: 78" CORRUGATED SUBSTRATE: A884-4 CORN GAUGE: 20 FASTENERS: EXPOSED. REF INSTALLATION INSTRUCT. FIRE RESISTANCE: CLASS A, PER IAL 701	A884-4 Corn	
PNT-EXT-1	PAINT	SHERWIN WILLIAMS OR BARR			
PNT-EXT-2	PAINT	SHERWIN WILLIAMS OR BARR			

SCHEDULE ABBREVIATION	PRODUCT CATEGORY	MANUFACTURER	SERIES & DESCRIPTION	COLOR & FINISH	NOTES
STONE-1	NATURAL THIN STONE VENEER - RUBBLE FIELD		NATURAL, CANTERA NOW 2" THICK, RANDOM FACE SIZES	COLOR: PRINCE CLARO FINISH: RUSTIC, IRREGULAR	
STONE-2	NATURAL STONE VENEER - DRESSED SURROUNDS		NATURAL, CANTERA NOW 2" - 3" THICK FACE SIZES AS SHOWN ON DRAWINGS		
WINDOW-1	STEEL WINDOW SYSTEM	BLISS NORM	75000 SERIES, THERMALLY BROKEN FIT 1" INSULATED GLASS UNIT GL-1 & GL-2	BLACKENED	1. CONTRACTOR FIELD FABRICATED THERMALLY BROKEN WINDOW ASSEMBLY AS ALTERNATE. 2. COORDINATE SYSTEM W/ ADJACENT DOORS AS SCHEDULED.
WP-1	SPRAY APPLIED WATERPROOFING SYSTEM W/ DRAINAGE MAT	TREMCO	TUFF-A-DRI HA SYSTEM 1. SPRAY APPLIED FLEXIBLE WATERPROOFING MEMBRANE 2. BARRIER OR FOUNDATION BOARD 3. DRAINAGE STRIP/DRAIN		1. EQ SUBSTITUTIONS ALLOWED. 2. APPLY WHEREVER FINISH FLOOR IS LOCATED BELOW FINISH GRADE, & EXTEND HORIZ 8" BEYOND THOSE EXTENTS. APPLY PER MFRS WRITTEN INSTRUCTIONS & EXTEND TO B.O. FOOTING.



J : BROWN : RiGG  
architecture

40 N Main Street, Cedar City, Utah 84720  
www.brownrigg.com  
435.590.3577

BAR HUMMINGBIRD

CASTLE ROCK PROMENADE BLOCK 2  
6371 PROMENADE PARKWAY  
CASTLE ROCK, CO

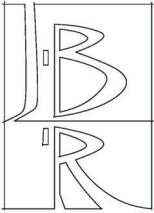
EXTERIOR ELEVATIONS

SDP revision 2

REVISION DESCRIPTION DATE

PROJECT # 2022-8  
DATE 2-17-2023

SHEET # 16 OF 18



J : BROWN : RIGG  
architecture

60 N Main Street, Cedar City, Utah 84720  
www.jbrvrigg.com  
435.590.3577

BAR HUMMINGBIRD

CASTLE ROCK PROMENADE BLOCK 2  
637N PROMENADE PARKWAY  
CASTLE ROCK, CO

EXTERIOR ELEVATIONS

SDP revision 2

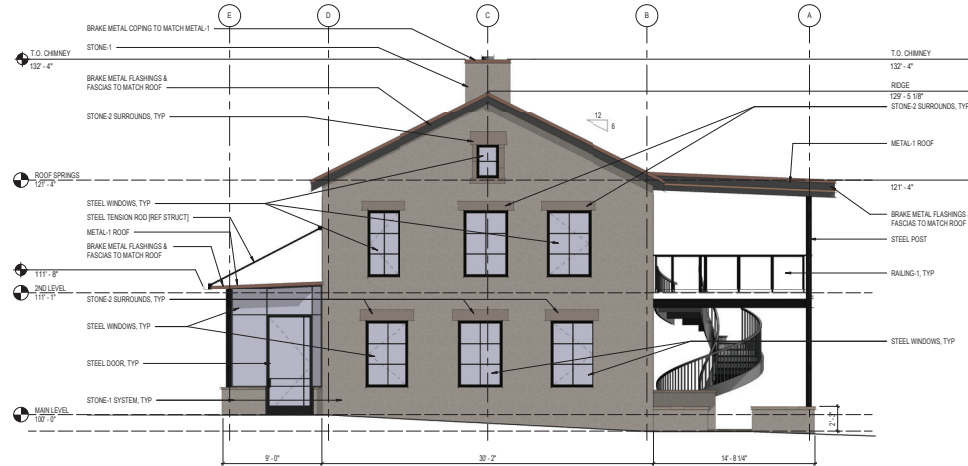
REVISION DESCRIPTION DATE

PROJECT # 2022-8  
DATE 2-17-2023

SHEET # 17 OF 18



1 EXTERIOR ELEVATION - BAR HUMMINGBIRD WEST  
3/16" = 1'-0"



2 EXTERIOR ELEVATION - BAR HUMMINGBIRD NORTH  
3/16" = 1'-0"

**BASIS OF DESIGN PRODUCT SPECIFICATIONS - EXTERIOR**

ALL SELECTIONS ARE PRELIMINARY, & SHALL BE VERIFIED BY SUBMITTAL OF PHYSICAL SAMPLE SUBJECT TO OWNER APPROVAL. EQUAL SUBSTITUTIONS ARE ALLOWED IF APPROVED BY OWNER OR ARCHITECT.

SCHEDULE ABBREVIATION	PRODUCT CATEGORY	MANUFACTURER	SERIES & DESCRIPTION	COLOR & FINISH	NOTES
METAL-1	CORRUGATED STEEL ROOF & WALL PANELS	WESTERN STATES METAL ROOFING www.westernstatesmetalroofing.com	PROFILE: 78" CORRUGATED SUBSTRATE: A894-C Corrug GAUGE: 20 FASTENERS: EXPOSED. REF INSTALLATION INSTRUCT. FIRE RESISTANCE: CLASS A PER I.A. 701	A894-C Custom	
PNT-EXT-1	PAINT	SHERWIN WILLIAMS OR BAHR			
PNT-EXT-2	PAINT	SHERWIN WILLIAMS OR BAHR			

SCHEDULE ABBREVIATION	PRODUCT CATEGORY	MANUFACTURER	SERIES & DESCRIPTION	COLOR & FINISH	NOTES
STONE-1	NATURAL THIN STONE VENEER - RUBBLE FIELD		NATURAL, CANTERA NOW 2" THICK - RANDOM FACE SIZES	COLOR: PRINX CLARO FINISH: RUSTIC/IRREGULAR	
STONE-2	NATURAL STONE VENEER - DRESSED SURROUNDS		NATURAL, CANTERA NOW 2" - 3" THICK FACE SIZES AS SHOWN ON DRAWINGS		
WINDOW-1	STEEL WINDOW SYSTEM	BLISS NORM	70800 SERIES, THERMALLY BROKEN FIT 1" INSULATED GLASS UNIT GL-1 & GL-2	BLACKENED	1. CONTRACTOR FIELD FABRICATED THERMALLY BROKEN WINDOW ASSEMBLY AS ALTERNATE. 2. COORDINATE SYSTEM W/ ADJACENT DOORS AS SCHEDULED.
WP-1	SPRAY APPLIED WATERPROOFING SYSTEM W/ DRAINAGE MAT	TREMCO	TUFF-A-DRI HA SYSTEM 1. SPRAY APPLIED FLEXIBLE WATERPROOFING MEMBRANE 2. BARRIER OR FOUNDATION BOARD 3. DRAINAGE STRIP/DRAIN		1. EQ SUBSTITUTIONS ALLOWED. 2. APPLY WHEREVER FINISH FLOOR IS LOCATED BELOW FINISH GRADE, & EXTEND HORIZ 8' BEYOND THOSE EXTENTS. APPLY PER MFRS WRITTEN INSTRUCTIONS & EXTEND TO B.O. FOOTING.



3 4



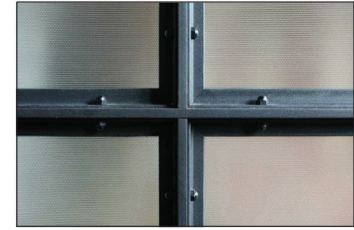
5



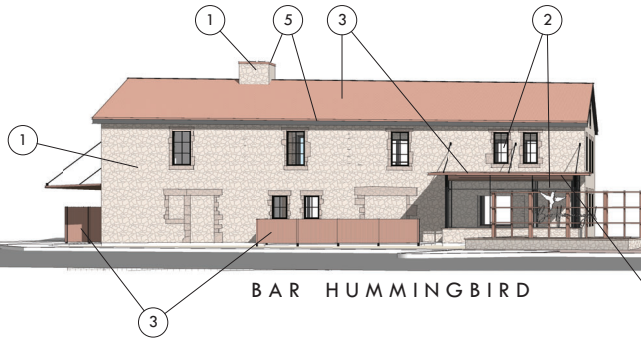
6



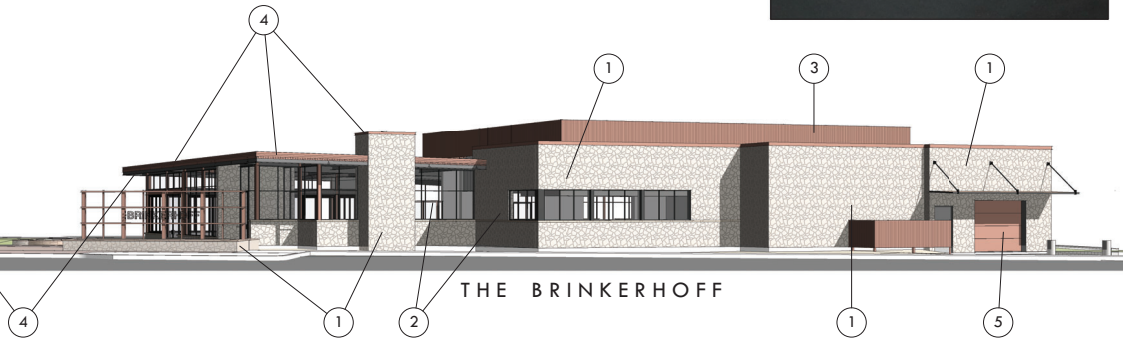
6



6



BAR HUMMINGBIRD



THE BRINKERHOFF

1



#### EXTERIOR MATERIAL & FINISH LEGEND

- 1 NATURAL THIN STONE: CANTERA, RUSTICO IRREGULAR, PINON CLARO
- 2 WINDOWS & DOORS: BLACKENED STEEL w/ CLEAR GLASS
- 3 ROOFING (BAR HUMMINGBIRD) & SCREEN WALL SIDING: 7/8" CORRUGATED CORTEN / RUSTED STEEL
- 4 SOFFITS: 7/8" CORRUGATED CORTEN / RUSTED STEEL
- 5 EXPOSED STEEL & FASCIAS & COPINGS: CORTEN / RUSTED STEEL

THE MATERIAL PALETTE & CONCEPTUAL DESIGN CONFORMS TO THE INTENT OF PROMENADE AT CASTLE ROCK VISION BOOK. THE DESIGN EMBODIES THE THREE TRAITS EXPLICIT TO THE VISION: RUSTIC, INTIMATE & CASUAL. RUSTIC: NATURAL STONES IN A RANDOM RUBBLE FIELD WILL BE Juxtaposed WITH FINISHED, SMOOTHER, STONE TO CREATE COMPLEMENTARY TEXTURES. THE REMAINING VERTICAL SURFACES ARE GLASS AND STEEL, SOME BLACKENED, SOME PRE-RUSTED. THE EFFECT IS A CONTRAST OF CLEAN AND WEATHERED SURFACES THAT IS BOTH RUSTIC AND MODERN.

THE TWO BUILDINGS CONTRAST WITH AND COMPLIMENT EACH OTHER. BAR HUMMINGBIRD IS INTENDED TO GIVE THE IMPRESSION OF A UTILITARIAN SHELL OF A STRUCTURE FROM AGES PAST, WHICH HAS BEEN REPURPOSED AND MODERNIZED. THE BRINKERHOFF TAKES IT A STEP FURTHER, INTRODUCING A MODERN VOCABULARY TO THE PROJECT WHILE UTILIZING THE SAME TIMELESS MATERIALS AND PALETTE.

**J : BROWN : RIGG**  
architecture

40 N Main Street, Cedar City, Utah 84720  
www.jbrownrigg.com  
435.590.3577

THE BRINKERHOFF

CASTLE ROCK PROMENADE BLOCK 2  
6373 PROMENADE PARKWAY  
CASTLE ROCK, CO

EXTERIOR MATERIAL & FINISHES

SDP revision 2

REVISION	DESCRIPTION	DATE

PROJECT # 2022-4  
DATE 2-17-2023