

CASTLE ROCK WATER

DISCUSSION ON CHANGES TO COLORADOSCAPE CRITERIA

SEPTEMBER 3, 2024



COLORADOSCAPE

A *natural landscape* that uses low to very low water plant material that blends in with the native Castle Rock landscapes. Plant material must be maintained in its natural form, utilizing a combination of hardscape and landscape materials which provide a variety of colors, textures, sizes, shapes, and seasonal interest.



RESULTS TO DATE

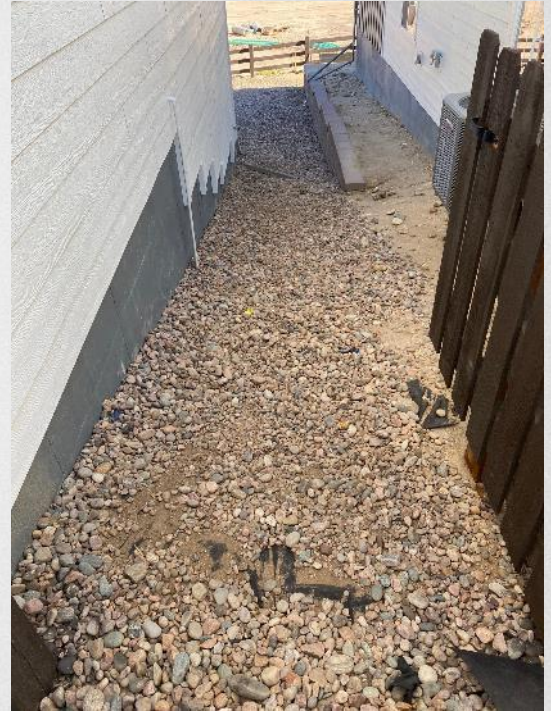
- Using half of the water of pre 2023 homes in irrigation season
- 51% of home builder permits installing only the front yard
- Some good installations and some bad installations
- Anecdotally, residents seem to be doing better installations than home builders for backyards



PROBLEMS / ISSUES

FUNCTIONALITY

- Lack of access from front to back yard
- No safe walking path
- Gates are obstructed and do not open and close
- No way to safely move lawn equipment from front to back
- Hardscape material not suitable for the slope



PROBLEMS / ISSUES

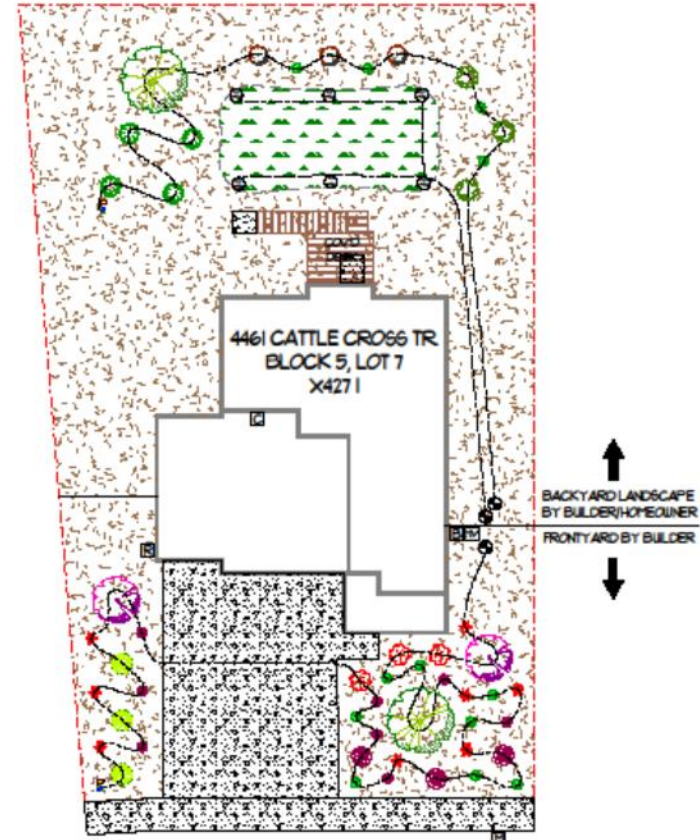
VISUAL INTEREST / APPEARANCE

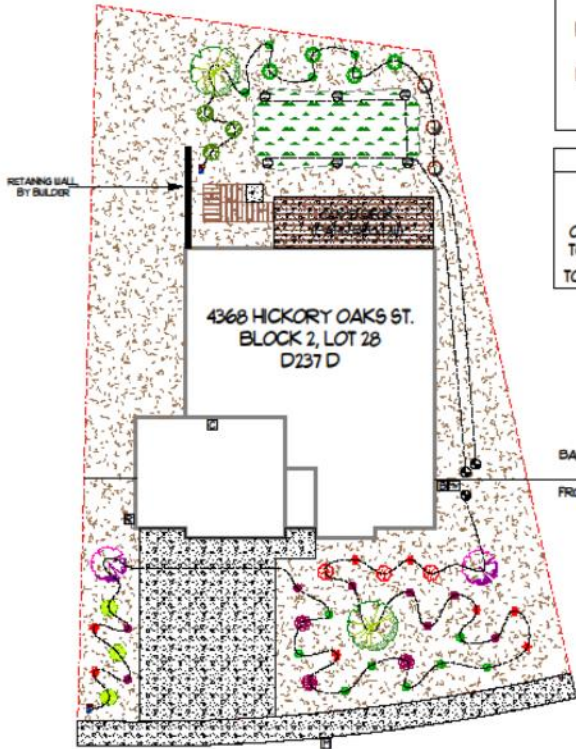
- Large amounts of rock with no variation in color, size, or type
- No wood mulch
- Not achieving 75% plant material coverage
- Very little variety of plant material or color variety





Front and Back Yard
Crystal Valley Ranch





FRONTYARD BY BUILDER
&
BACKYARD LANDSCAPE
BY HOMEOWNER

SQUARE FOOTAGES

LOT SIZE = 10,984 SF

TURF AREA = 5,000 SF

OTHER PLANTING AREA = 1,371 SF

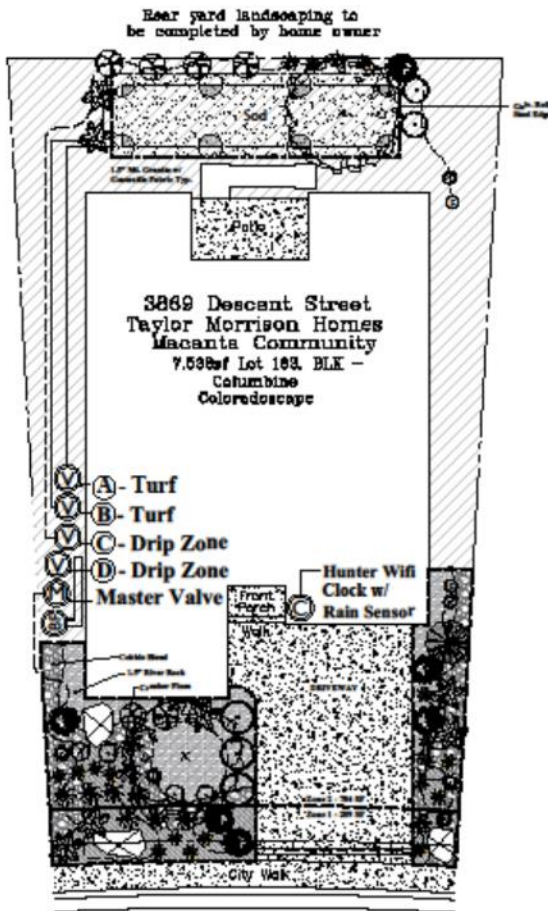
TOTAL IRRIGATED AREA = 1,871 SF

TOTAL IRRIGABLE AREA = 6,792 SF

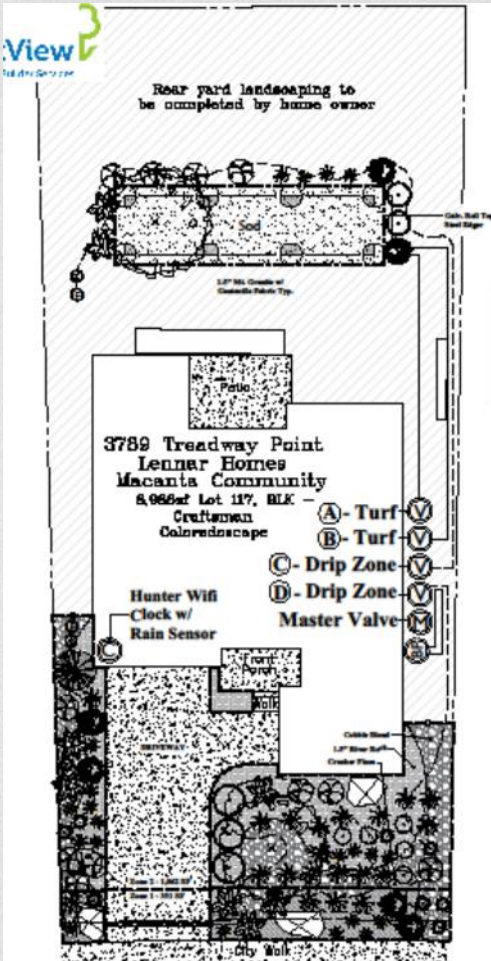


Front Yard Only
Crystal Valley Ranch

Front Yard Only
Macanta



Front Yard Only
Macanta





Macanta Resident ColoradoScape Conversion 2024

PROPOSED CHANGES

- **Functionality**
 - ✓ Must provide a clear, safe, unobstructed path between front and back yard
 - ✓ Gates must be clear, accessible, and operable
- **Visual interest**
 - ✓ Hardscape materials must include a variety of sizes, shapes, colors, and textures
 - ✓ Landscape materials must provide a variety of sizes, and seasonal interest (ex: flowering throughout the season)
- Maximize plant material coverage while adhering to fire mitigation guidelines
- 75% plant coverage at maturity on the irrigable area within the lot
- Create specific plant quantity requirements based on irrigable area
- **Water savings**
 - ✓ Plant material must be hydro-zone 1 or 2 (not to exceed 10" per season)
- Eliminate credit for doing front and back yard?



THANK YOU