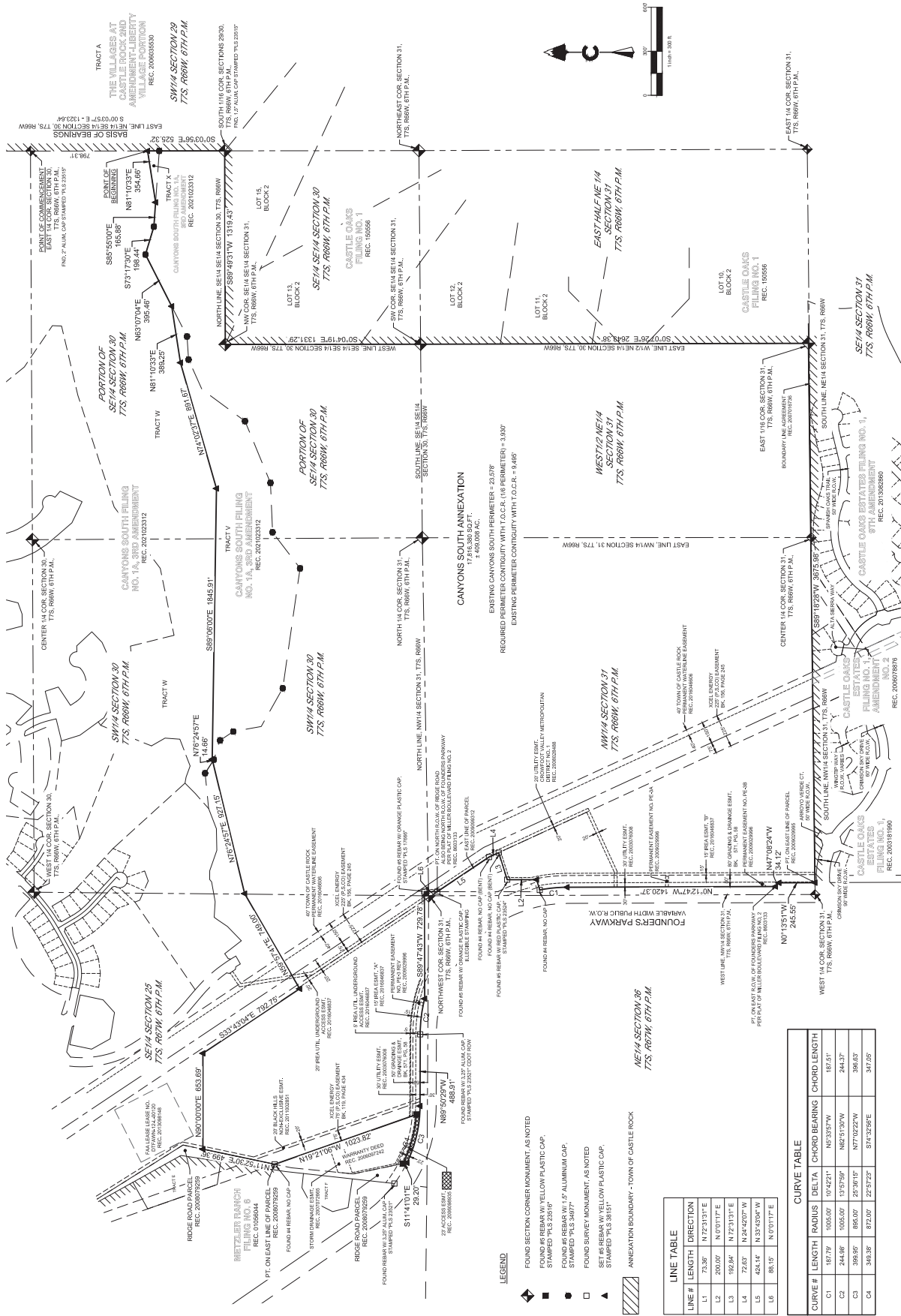


CANYONS SOUTH ANNEXATION MAP

PORTIONS OF NORTH HALF OF SECTION 31 & SOUTH HALF OF SECTION 30, TOWNSHIP 7 SOUTH, RANGE 66 WEST OF THE SIXTH PRINCIPAL MERIDIAN,
 PORTION SOUTHEAST QUARTER OF SECTION 25, TOWNSHIP 7 SOUTH, RANGE 67 WEST OF THE SIXTH PRINCIPAL MERIDIAN
 TOWN OF CASTLE ROCK, COUNTY OF DOUGLAS, STATE OF COLORADO



- LEGEND**
- ◆ FOUND SECTION CORNER MONUMENT, AS NOTED
 - FOUND IR REBAR W/ YELLOW PLASTIC CAP, STAMPED PLS 23819
 - FOUND IR REBAR W/ 1.5" ALUMINUM CAP, STAMPED PLS 30474
 - FOUND SURVEY MONUMENT, AS NOTED
 - ▲ SET IR REBAR W/ YELLOW PLASTIC CAP, STAMPED PLS 30151
 - ▨ ANNEXATION BOUNDARY - TOWN OF CASTLE ROCK

LINE TABLE

LINE #	LENGTH	DIRECTION
L1	73.36'	N 72° 31' 11" E
L2	200.00'	N 0° 31' 11" E
L3	192.64'	N 72° 31' 11" E
L4	72.63'	N 24° 42' 07" W
L5	424.14'	N 33° 43' 04" W
L6	88.15'	N 0° 31' 11" E

CURVE TABLE

CURVE #	LENGTH	RADIUS	DELTA	CHORD BEARING	CHORD LENGTH
C1	187.79'	1005.00'	10° 42' 11"	N 82° 33' 57" W	187.61'
C2	244.86'	1005.00'	13° 57' 59"	N 89° 53' 30" W	244.37'
C3	399.85'	865.00'	25° 38' 15"	N 77° 02' 22" W	396.63'
C4	343.36'	872.00'	22° 57' 23"	S 74° 32' 56" E	347.65'

