

The Promenade at Castle Rock
PROJECT

OWNER

Alberta Development Partners
DEVELOPMENT MANAGER

PLM, TJ
PLM & Studio No 6

OWNER'S REPRESENTATIVE:
PLM Architecture 1 (303) 953.1014
1155 Atlantis Ave. www.plmarchitecture.com
Lafayette, CO 80026 Paul Mack

PROJECT ARCHITECT:

PROJECT DESIGNER:
Studio Six 1 (303) 652-6230
1114 Neon Forest #6
Longmont, CO 80504 Traci Jones

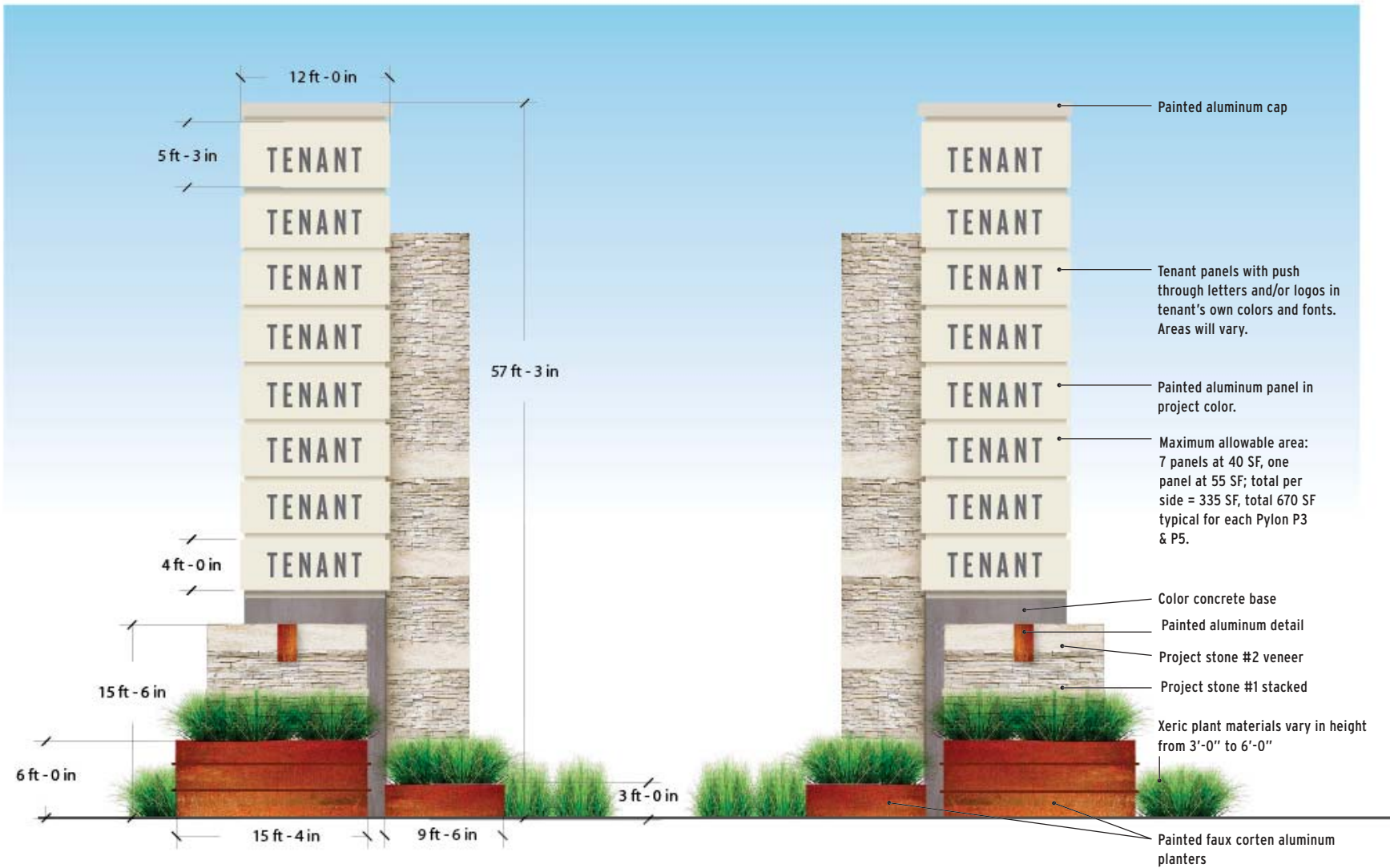
ORIGINAL ISSUE:	[Oct 26 2015]
REVISIONS:	

October 26, 2015

Location Plan

These drawings are for the sole purpose of expressing visual design intent and are not intended for construction purposes. All aspects engineering, fabrication, installation, and any resulting documentation are the responsibility of the Fabricator.





A | North Facing
Scale: 1/8" = 1'-0"

B | South Facing
Scale: 1/8" = 1'-0"



The Promenade at Castle Rock
PROJECT

OWNER

Alberta Development Partners
DEVELOPMENT MANAGER

PLM, TJ
PLM & Studio No 6

OWNER'S REPRESENTATIVE:
PLM Architecture 1 (303) 953.1014
1155 Atlantis Ave. www.plmarchitecture.com
Lafayette, CO 80026 Paul Mack

PROJECT ARCHITECT:

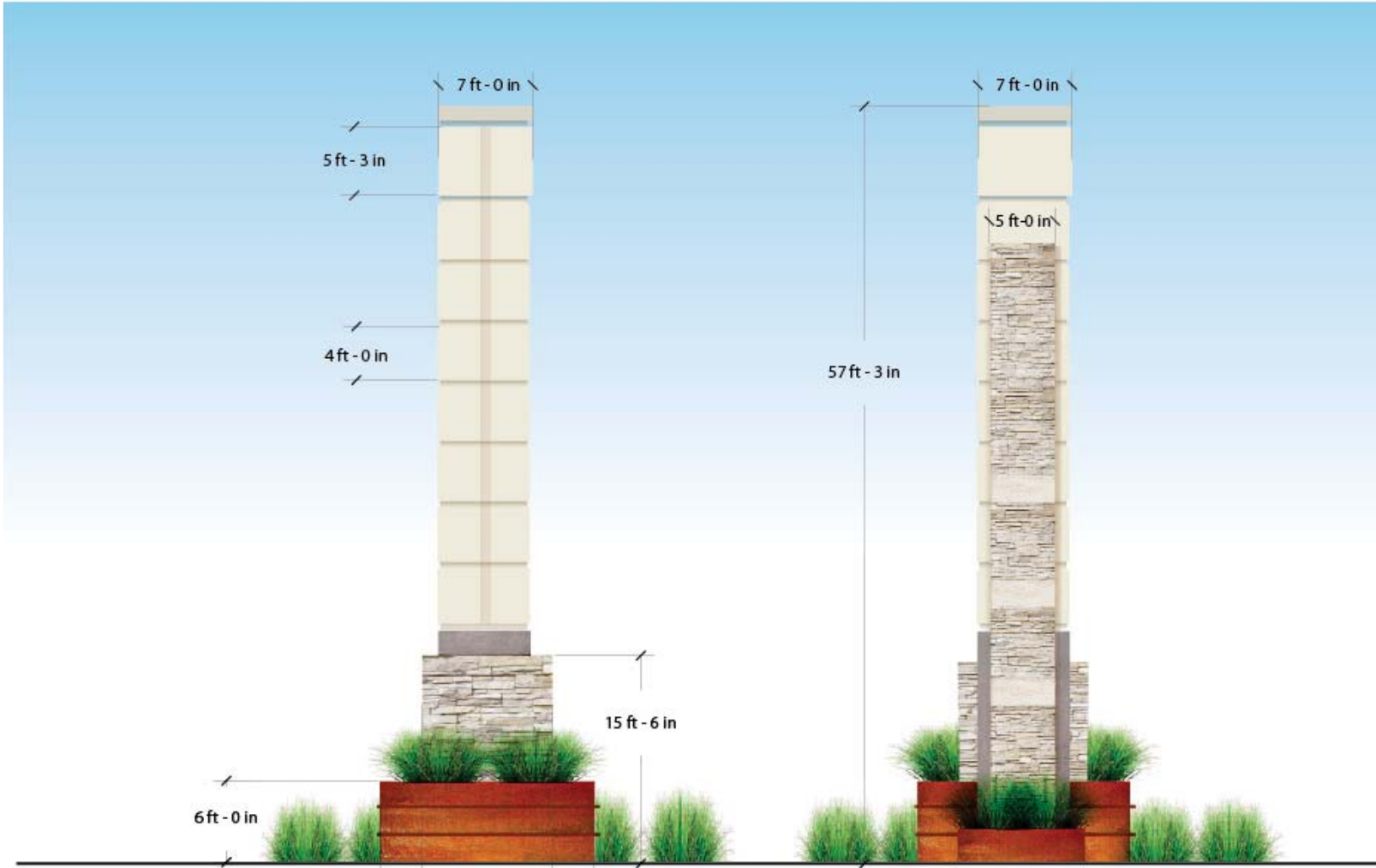
PROJECT DESIGNER:
Studio Six 1 (303) 652-6230
1114 Neon Forest #6 traci@studio6.com
Longmont, CO 80504 Traci Jones

ORIGINAL ISSUE:	[Oct 26 2015]
REVISIONS:	

October 26, 2015

Pylon / P3 Elevations

These drawings are for the sole purpose of expressing visual design intent and are not intended for construction purposes. All aspects engineering, fabrication, installation, and any resulting documentation are the responsibility of the Fabricator.



A | East Elevation
Scale: 1/8" = 1'-0"

B | West Elevation
Scale: 1/8" = 1'-0"

P5 east and west elevations similar



The Promenade at Castle Rock
PROJECT

OWNER
Alberta Development Partners
DEVELOPMENT MANAGER

PLM, TJ
PLM & Studio No 6

OWNER'S REPRESENTATIVE:
PLM Architecture 1 (303) 953.1014
1155 Atlantis Ave. www.plmarchitecture.com
Lafayette, CO 80026 Paul Mack

PROJECT ARCHITECT:

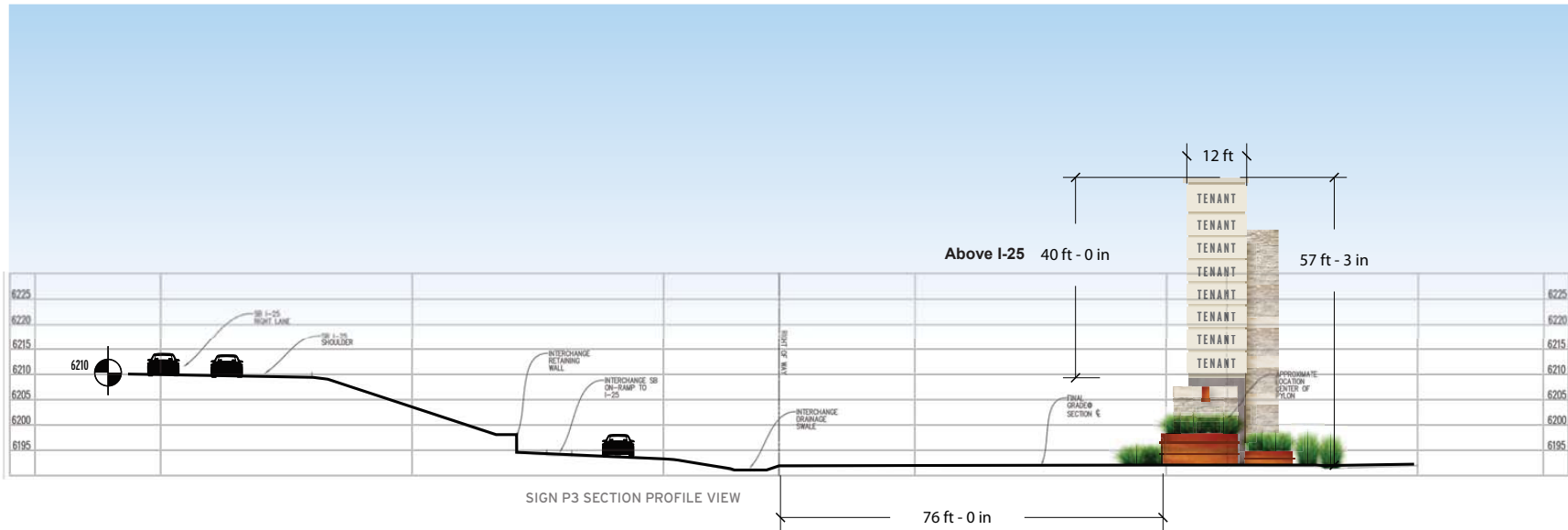
PROJECT DESIGNER:
Studio Six 1 (303) 652-6230
1114 Neon Forest #6 tracj@studio6.com
Longmont, CO 80504 Traci Jones

ORIGINAL ISSUE:	[Oct 26 2015]
REVISIONS:	

October 26, 2015

Pylon / P3 Elevations

These drawings are for the sole purpose of expressing visual design intent and are not intended for construction purposes. All aspects engineering, fabrication, installation, and any resulting documentation are the responsibility of the Fabricator.



A | Section / Elevation
Not to Scale

The Promenade at Castle Rock pylons incorporate native materials, xeric planting materials as well as painted aluminum meant to reflect the native landscape and architecture.

The maximum overall height of the sign structure shall not exceed 40 feet above the I-25 elevation. This height is required for legibility at interstate highway speeds. Individual tenant names are approximately 3'-6" for 7 panels and 4'-3" for the top panel.



The Promenade at Castle Rock
PROJECT

OWNER

Alberta Development Partners
DEVELOPMENT MANAGER

PLM, TJ
PLM & Studio No 6

OWNER'S REPRESENTATIVE:
PLM Architecture 1 (303) 953.1014
1155 Atlantis Ave. www.plmarchitecture.com
Lafayette, CO 80026 Paul Mack

PROJECT ARCHITECT:

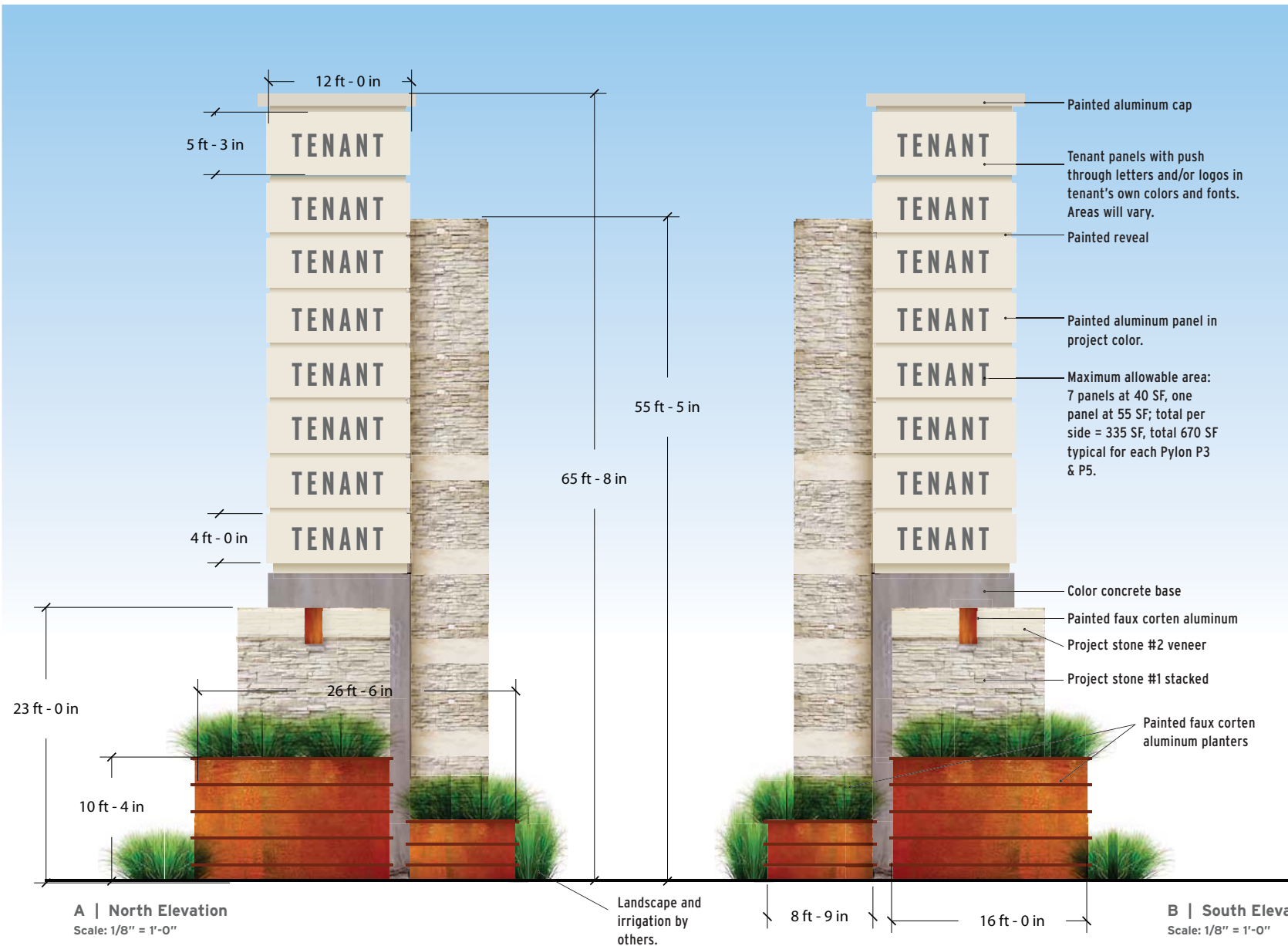
PROJECT DESIGNER:
Studio Six 1 (303) 652-6230
1114 Neon Forest #6 tracj@studio6.com
Longmont, CO 80504 Traci Jones

ORIGINAL ISSUE:	[Oct 26 2015]
REVISIONS:	

October 26, 2015

Pylon / P3
Highway Section

These drawings are for the sole purpose of expressing visual design intent and are not intended for construction purposes. All aspects engineering, fabrication, installation, and any resulting documentation are the responsibility of the Fabricator.

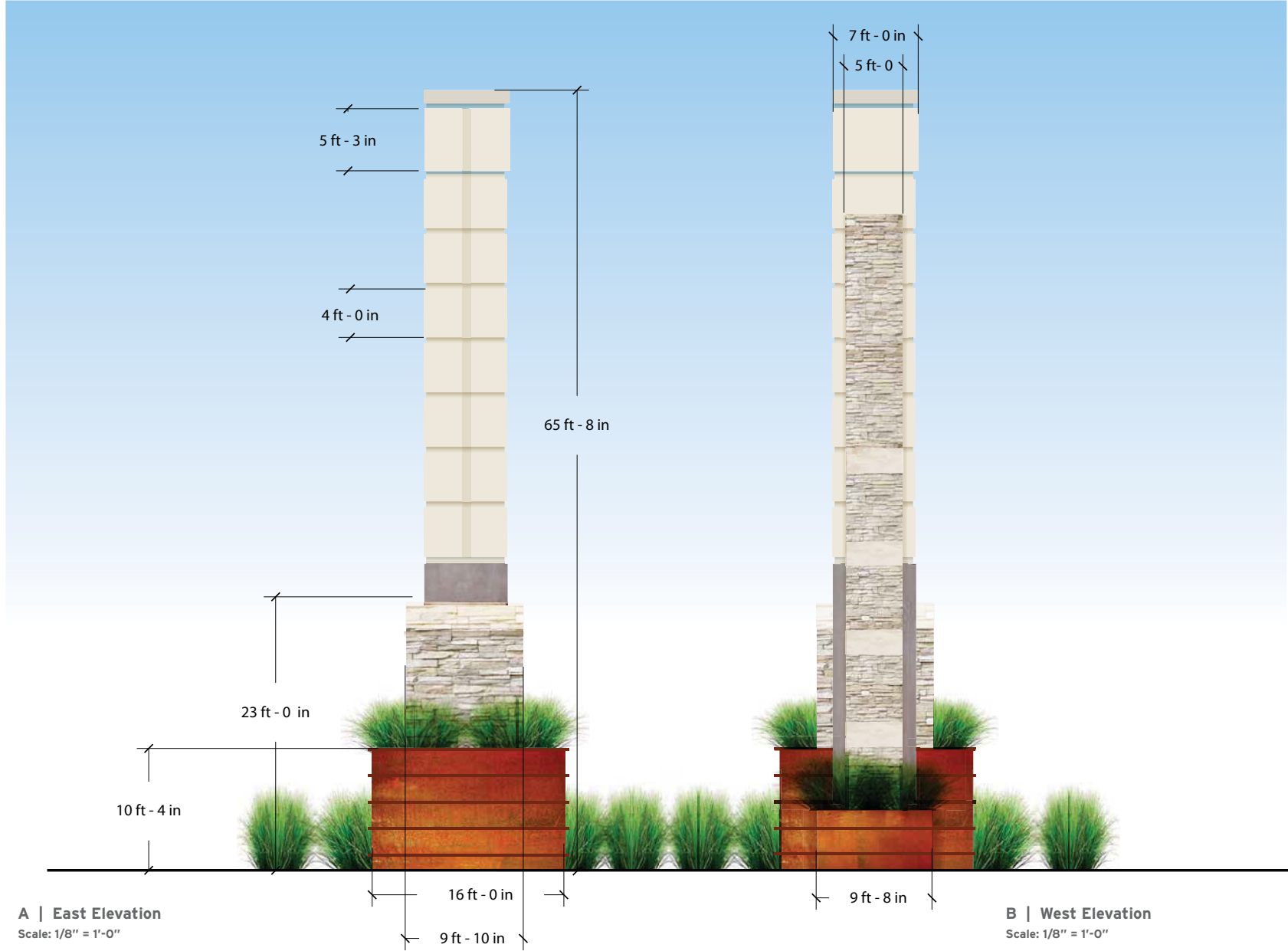


ORIGINAL ISSUE:	[Oct 26 2015]
REVISIONS:	

October 26, 2015

**Pylon / P5
Elevations**

These drawings are for the sole purpose of expressing visual design intent and are not intended for construction purposes. All aspects engineering, fabrication, installation, and any resulting documentation are the responsibility of the Fabricator.



A | East Elevation
Scale: 1/8" = 1'-0"

B | West Elevation
Scale: 1/8" = 1'-0"



— Promenade at —
CASTLE ROCK

my
PAUL MACK
ARCHITECTURE



The Promenade at Castle Rock
PROJECT

OWNER

Alberta Development Partners
DEVELOPMENT MANAGER

PLM, TJ
PLM & Studio No 6

OWNER'S REPRESENTATIVE:
PLM Architecture 1 (303) 953.1014
1155 Atlantis Ave. www.plmarchitecture.com
Lafayette, CO 80026 Paul Mack

PROJECT ARCHITECT:

PROJECT DESIGNER:
Studio Six 1 (303) 652-6230
1114 Neon Forest #6 tracj@studio6.com
Longmont, CO 80504 Traci Jones

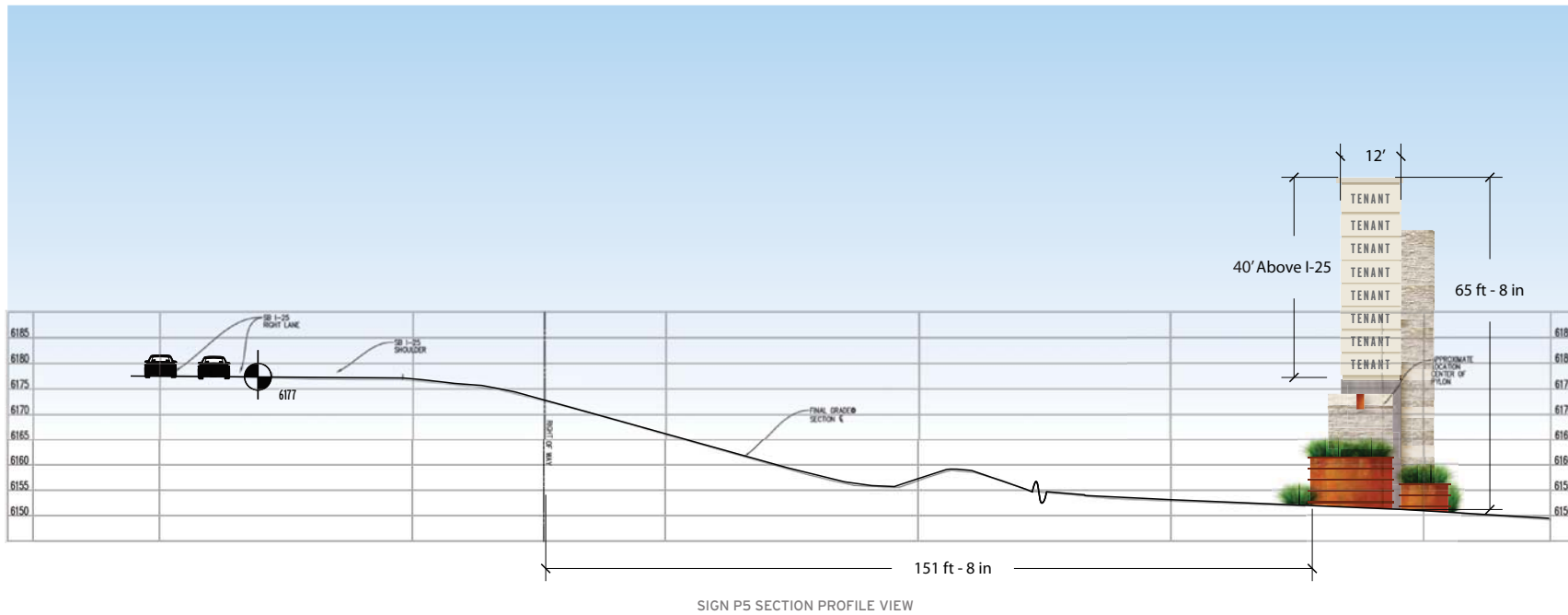
ORIGINAL ISSUE: **[Oct 26 2015]**

REVISIONS:	

October 26, 2015

Pylon / P5
Elevations

These drawings are for the sole purpose of expressing visual design intent and are not intended for construction purposes. All aspects engineering, fabrication, installation, and any resulting documentation are the responsibility of the Fabricator.



SIGN P5 SECTION PROFILE VIEW

A | Section / Elevation
Not to Scale

The Promenade at Castle Rock pylons incorporate native materials, xeric planting materials as well as painted aluminum meant to reflect the native landscape and architecture.

The maximum overall height of the sign structure shall not exceed 40 feet above the I-25 elevation. This height is required for legibility at interstate highway speeds. Individual tenant names are approximately 3'-6" for 7 panels and 4'-3" for the top panel.



The Promenade at Castle Rock
PROJECT

OWNER

Alberta Development Partners
DEVELOPMENT MANAGER

PLM, TJ
PLM & Studio No 6

OWNER'S REPRESENTATIVE:
PLM Architecture t (303) 953.1014
1155 Atlantis Ave. www.plmarchitecture.com
Lafayette, CO 80026 Paul Mack

PROJECT ARCHITECT:

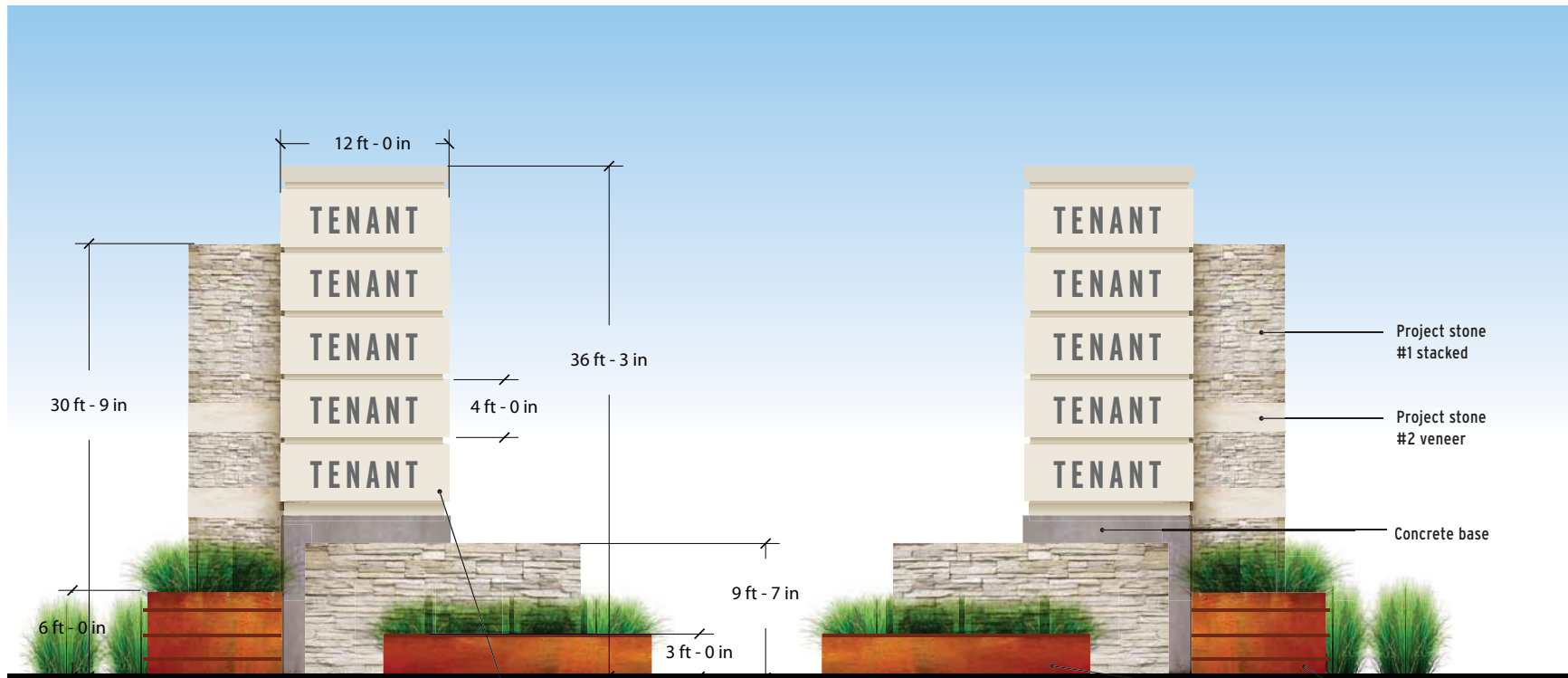
PROJECT DESIGNER:
Studio Six t (303) 652-6230
1114 Neon Forest #6 tracj@studio6.com
Longmont, CO 80504 Traci Jones

ORIGINAL ISSUE:	[Oct 26 2015]
REVISIONS:	

October 26, 2015

Pylon / P5
Highway Section

These drawings are for the sole purpose of expressing visual design intent and are not intended for construction purposes. All aspects engineering, fabrication, installation, and any resulting documentation are the responsibility of the Fabricator.



A | North Elevation
Scale: 1/8" 1'-0"

B | South Elevation
Scale: 1/8" 1'-0"

Tenant panels with push-thru tenant names and logos. Areas will vary.
Maximum allowable:
5 panels at 40 SF, total 200 SF per side, 400 SF total PS 16 Pylon.

See notes on page 2 for typical materials

Project stone #1 stacked
Project stone #2 veneer
Concrete base

Painted faux corten aluminum planters



The Promenade at Castle Rock
PROJECT

OWNER

Alberta Development Partners
DEVELOPMENT MANAGER

PLM, TJ
PLM & Studio No 6

OWNER'S REPRESENTATIVE:
PLM Architecture 1 (303) 953.1014
1155 Atlantis Ave. www.plmarchitecture.com
Lafayette, CO 80026 Paul Mack

PROJECT ARCHITECT:

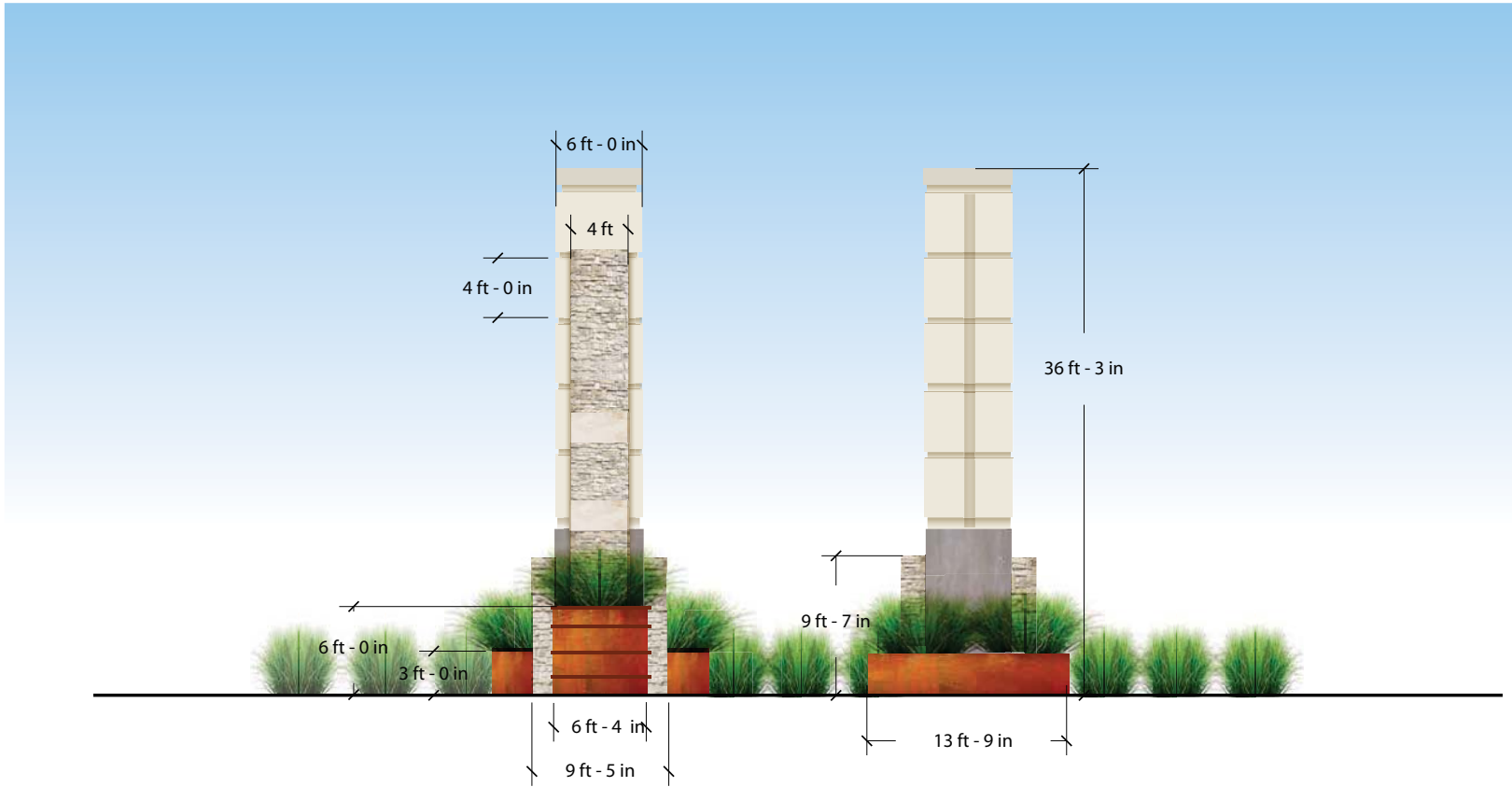
PROJECT DESIGNER:
Studio Six 1 (303) 652-6230
1114 Neon Forest #6
Longmont, CO 80504 Traci Jones

ORIGINAL ISSUE:	[Oct 26 2015]
REVISIONS:	

October 26, 2015

Pylon / PS16
Elevations

These drawings are for the sole purpose of expressing visual design intent and are not intended for construction purposes. All aspects engineering, fabrication, installation, and any resulting documentation are the responsibility of the Fabricator.



A | West Elevation
Scale: 1/8" 1'-0"

B | East Elevation
Scale: 1/8" 1'-0"



The Promenade at Castle Rock
PROJECT

OWNER
Alberta Development Partners
DEVELOPMENT MANAGER
PLM, TJ
PLM & Studio No 6

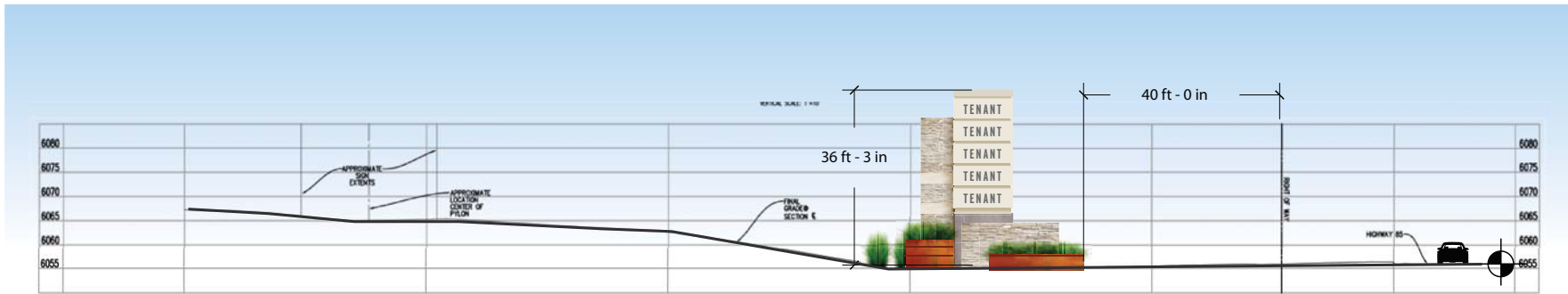
OWNER'S REPRESENTATIVE:
PLM Architecture 1 (303) 953.1014
1155 Atlantis Ave. www.plmarchitecture.com
Lafayette, CO 80026 Paul Mack

PROJECT ARCHITECT:
Studio Six 1 (303) 652-6230
1114 Neon Forest #6 traci@studio6.com
Longmont, CO 80504 Traci Jones

ORIGINAL ISSUE:	[Oct 26 2015]
REVISIONS:	

October 26, 2015
Pylon / PS16 Elevations

These drawings are for the sole purpose of expressing visual design intent and are not intended for construction purposes. All aspects engineering, fabrication, installation, and any resulting documentation are the responsibility of the Fabricator.



A | Section/Elevation

Scale: Not to scale

The Promenade at Castle Rock pylons incorporate native materials, xeric planting materials as well as painted aluminum meant to reflect the native landscape and architecture.

The height above US-Hwy 85 is 36'-0" for P16. This height is required for legibility at Highway 85 speeds. Individual tenant names are approximately 3'-6" for all tenant panels.



The Promenade at Castle Rock
PROJECT

OWNER

Alberta Development Partners
DEVELOPMENT MANAGER

PLM, TJ
PLM & Studio No 6

OWNER'S REPRESENTATIVE:
PLM Architecture 1 (303) 953.1014
1155 Atlantis Ave. www.plmarchitecture.com
Lafayette, CO 80026 Paul Mack

PROJECT ARCHITECT:

PROJECT DESIGNER:
Studio Six 1 (303) 652-6230
1114 Neon Forest #6 traci@studio6.com
Longmont, CO 80504 Traci Jones

ORIGINAL ISSUE:	[Oct 26 2015]
REVISIONS:	

October 26, 2015

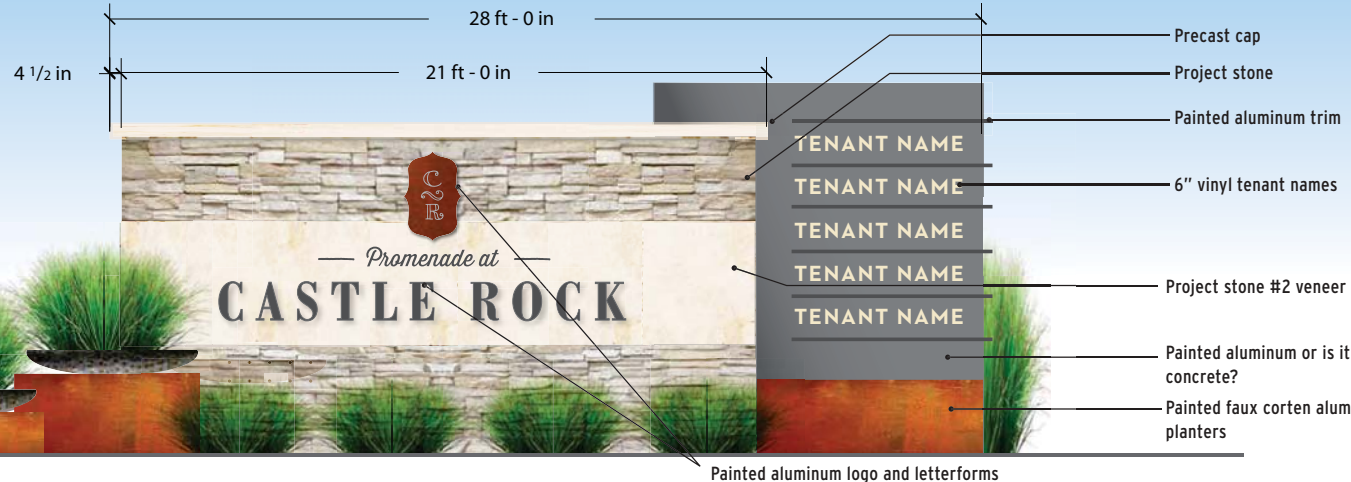
**Pylon / PS16
Highway Section**

These drawings are for the sole purpose of expressing visual design intent and are not intended for construction purposes. All aspects engineering, fabrication, installation, and any resulting documentation are the responsibility of the Fabricator.

Note:
 Typical for M1, M15.
 M is allowed both project name and tenant names. Per CDOT: two each per US 85 frontage.

Tenant names are on : PS16, M15
 Project names are on: M15, MS17

Textured, painted aluminum planters.
 Landscape and irrigation by others.



A | Front Elevation
 1/4"=1'-0"



The Promenade at Castle Rock
 PROJECT

OWNER
Alberta Development Partners
 DEVELOPMENT MANAGER

PLM, TJ
 PLM & Studio No 6

OWNER'S REPRESENTATIVE:
PLM Architecture 1 (303) 953.1014
 1155 Atlantis Ave. www.plmarchitecture.com
 Lafayette, CO 80026 Paul Mack

PROJECT ARCHITECT:

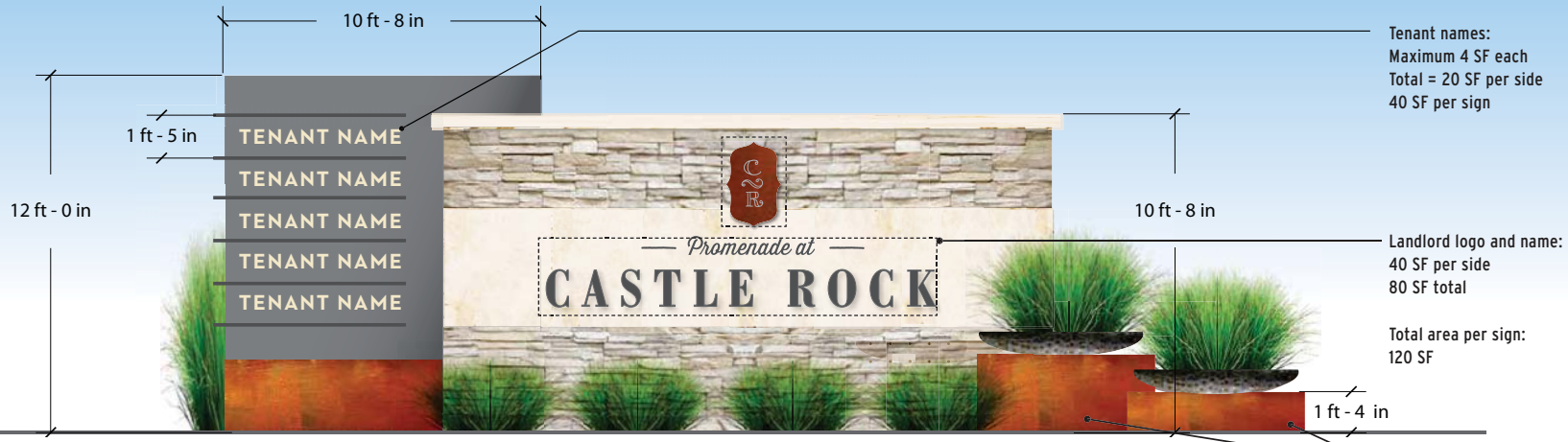
PROJECT DESIGNER:
Studio Six 1 (303) 652-6230
 1114 Neon Forest #6 traci@studio6.com
 Longmont, CO 80504 Traci Jones

ORIGINAL ISSUE:	[Oct 26 2015]
REVISIONS:	

October 26, 2015

Monument / M Elevations

These drawings are for the sole purpose of expressing visual design intent and are not intended for construction purposes. All aspects engineering, fabrication, installation, and any resulting documentation are the responsibility of the Fabricator.



B | Front Elevation
 1/4"=1'-0"
 6" letter height on tenant names

Tenant names:
 Maximum 4 SF each
 Total = 20 SF per side
 40 SF per sign

Landlord logo and name:
 40 SF per side
 80 SF total

Total area per sign:
 120 SF

Painted faux corten aluminum planters



— Promenade at —
CASTLE ROCK

my
PAUL MACK
ARCHITECTURE



STUDIO SIX

The Promenade at Castle Rock
PROJECT

OWNER

Alberta Development Partners
DEVELOPMENT MANAGER

PLM, TJ

PLM & Studio No 6

OWNER'S REPRESENTATIVE:

PLM Architecture 1 (303) 953.1014
1155 Atlantis Ave. www.plmarchitecture.com
Lafayette, CO 80026 Paul Mack

PROJECT ARCHITECT:

PROJECT DESIGNER:

Studio Six 1 (303) 652-6230
1114 Neon Forest #6 traci@studio6.com
Longmont, CO 80504 Traci Jones

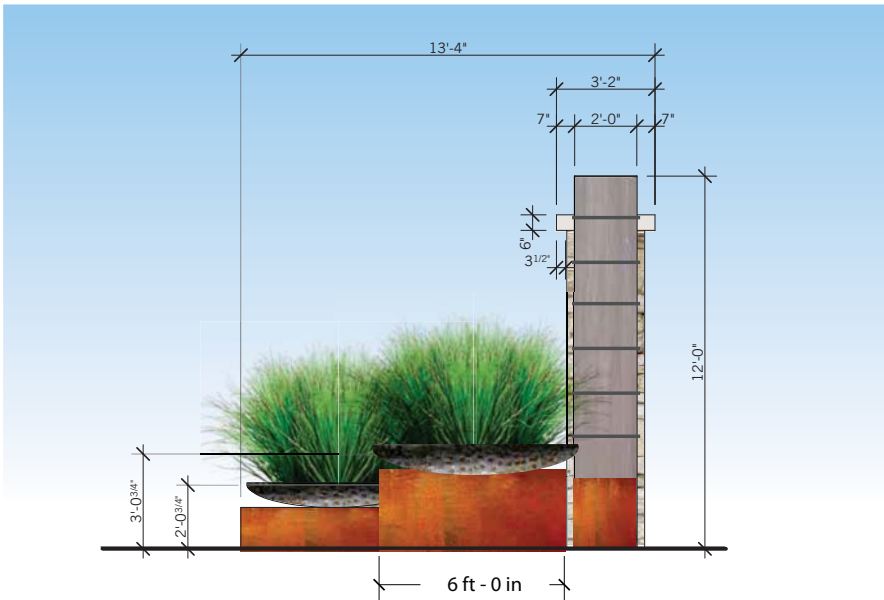
ORIGINAL ISSUE: **[Oct 26 2015]**

REVISIONS:	

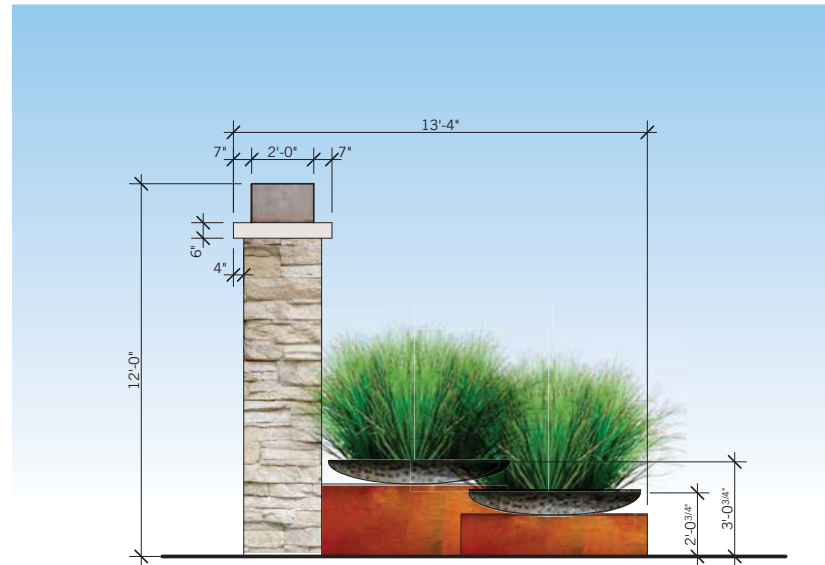
October 26, 2015

Monument / M Elevations

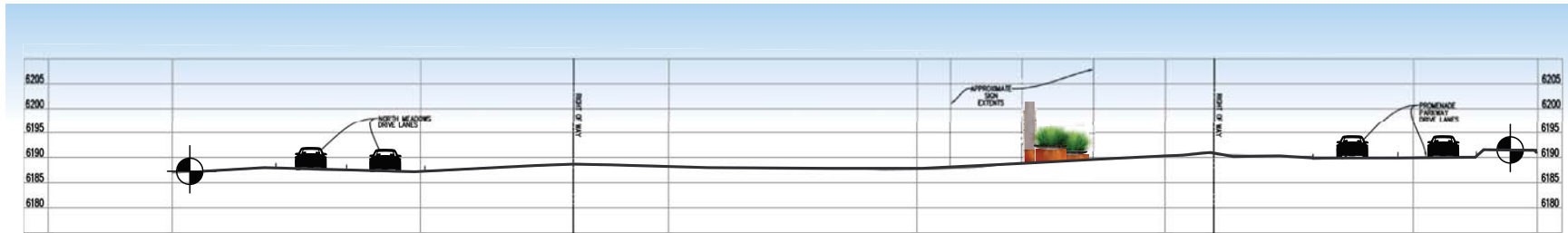
These drawings are for the sole purpose of expressing visual design intent and are not intended for construction purposes. All aspects engineering, fabrication, installation, and any resulting documentation are the responsibility of the Fabricator.



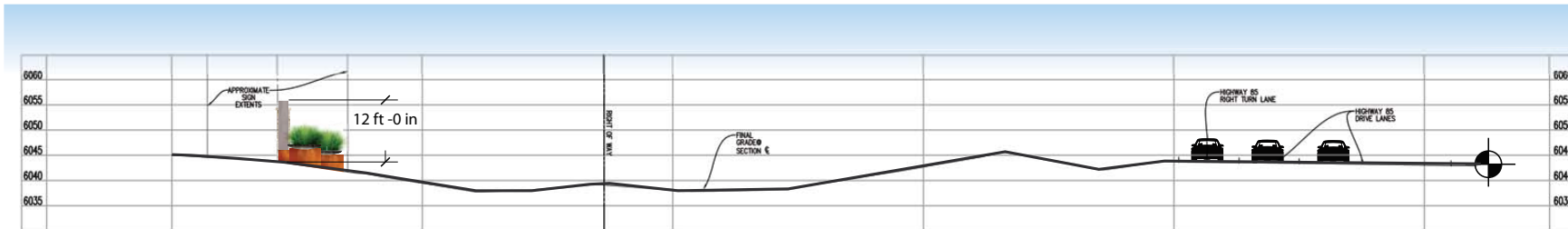
A | Side Elevation
1/4"=1'-0"



B | Side Elevation
1/4"=1'-0"



M1 | Section
Scale: Not to scale



M15 | Section
Scale: Not to scale



The Promenade at Castle Rock
PROJECT

OWNER

Alberta Development Partners
DEVELOPMENT MANAGER

PLM, TJ
PLM & Studio No 6

OWNER'S REPRESENTATIVE:
PLM Architecture 1 (303) 953.1014
1155 Atlantis Ave. www.plmarchitecture.com
Lafayette, CO 80026 Paul Mack

PROJECT ARCHITECT:

PROJECT DESIGNER:
Studio Six 1 (303) 652-6230
1114 Neon Forest #6 tracj@studio6.com
Longmont, CO 80504 Traci Jones

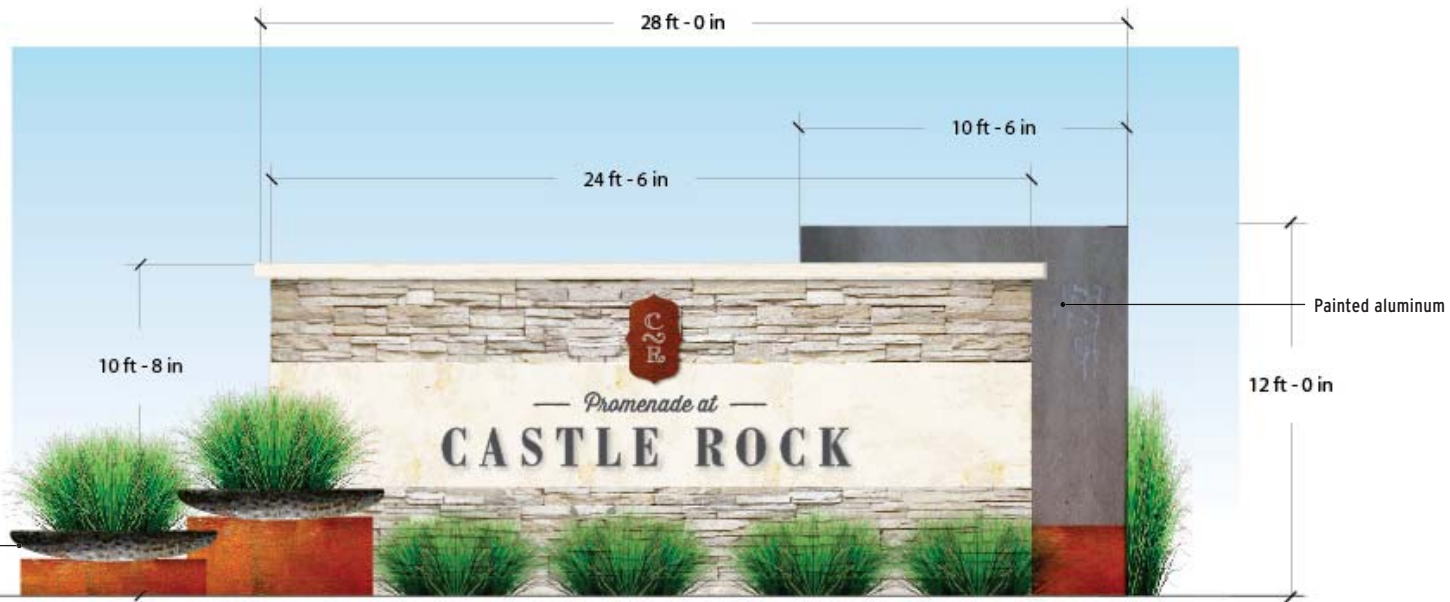
ORIGINAL ISSUE:	[Oct 26 2015]
REVISIONS:	

October 26, 2015

Monument / M Highway Sections

These drawings are for the sole purpose of expressing visual design intent and are not intended for construction purposes. All aspects engineering, fabrication, installation, and any resulting documentation are the responsibility of the Fabricator.

Note:
Typical for MS2, MS4,
MS17, MS21



A | Front Elevation
1/4"=1'-0"

Textured, painted
aluminum planter.
Landscape & irrigation by
others.



The Promenade at Castle Rock
PROJECT

OWNER

Alberta Development Partners
DEVELOPMENT MANAGER

PLM, TJ
PLM & Studio No 6

OWNER'S REPRESENTATIVE:
PLM Architecture 1 (303) 953.1014
1155 Atlantis Ave. www.plmarchitecture.com
Lafayette, CO 80026 Paul Mack

PROJECT ARCHITECT:

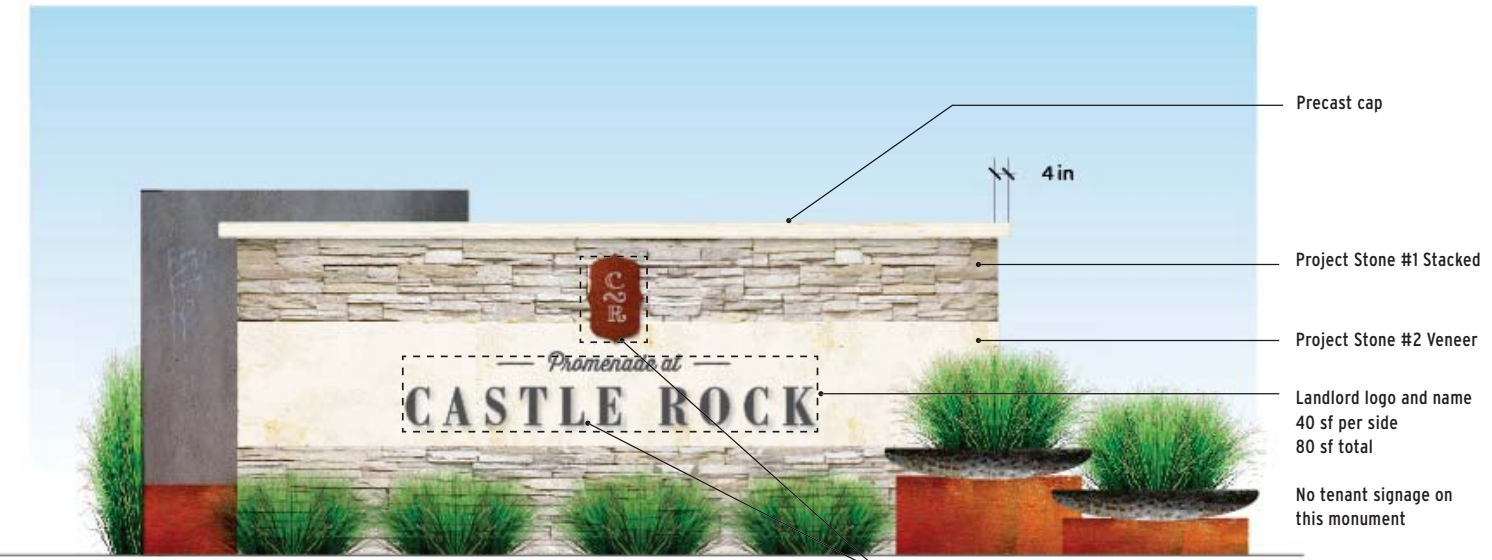
PROJECT DESIGNER:
Studio Six 1 (303) 652-6230
1114 Neon Forest #6 traci@studio6.com
Longmont, CO 80504 Traci Jones

ORIGINAL ISSUE:	[Oct 26 2015]
REVISIONS:	

October 26, 2015

**Secondary Monument /
MS Elevations**

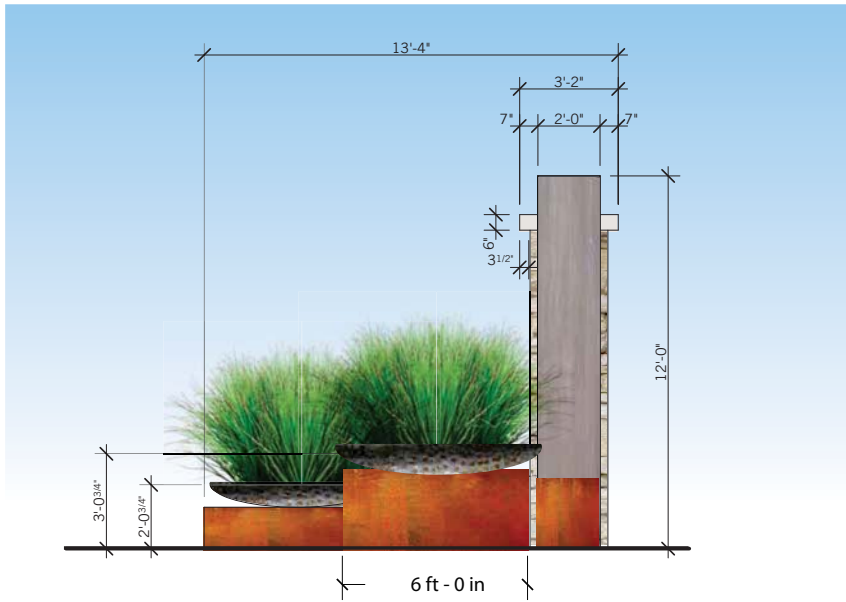
These drawings are for the sole purpose of
expressing visual design intent and are not
intended for construction purposes. All aspects
engineering, fabrication, installation, and any
resulting documentation are the responsibility of
the Fabricator.



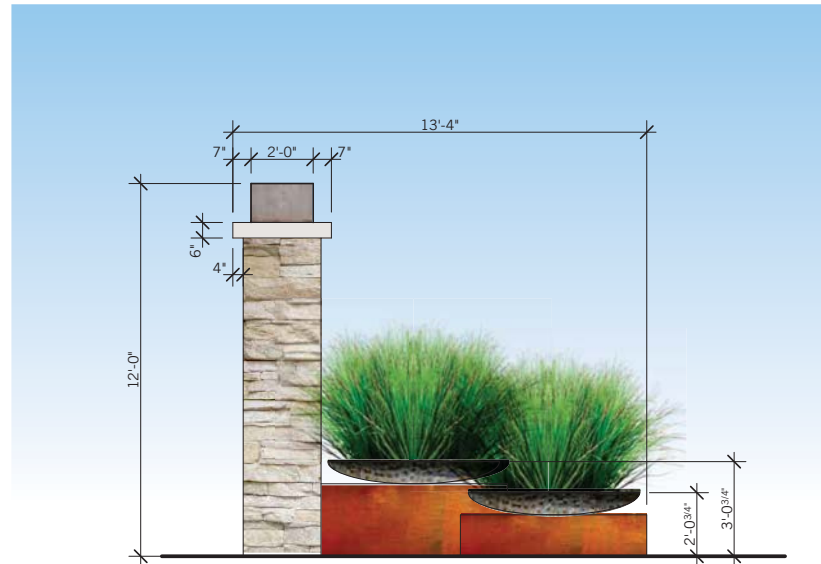
B | Rear Elevation
1/4"=1'-0"

Precast cap
4 in
Project Stone #1 Stacked
Project Stone #2 Veneer
Landlord logo and name
40 sf per side
80 sf total
No tenant signage on
this monument

Painted aluminum logo and letterforms



A | Side Elevation
1/4"=1'-0"



B | Side Elevation
1/4"=1'-0"



The Promenade at Castle Rock
PROJECT

OWNER

Alberta Development Partners
DEVELOPMENT MANAGER

PLM, TJ
PLM & Studio No 6

OWNER'S REPRESENTATIVE:
PLM Architecture 1 (303) 953.1014
1155 Atlantis Ave. www.plmarchitecture.com
Lafayette, CO 80026 Paul Mack

PROJECT ARCHITECT:

PROJECT DESIGNER:
Studio Six 1 (303) 652-6230
1114 Neon Forest #6 tracj@studio6.com
Longmont, CO 80504 Traci Jones

ORIGINAL ISSUE:	[Oct 26 2015]
REVISIONS:	

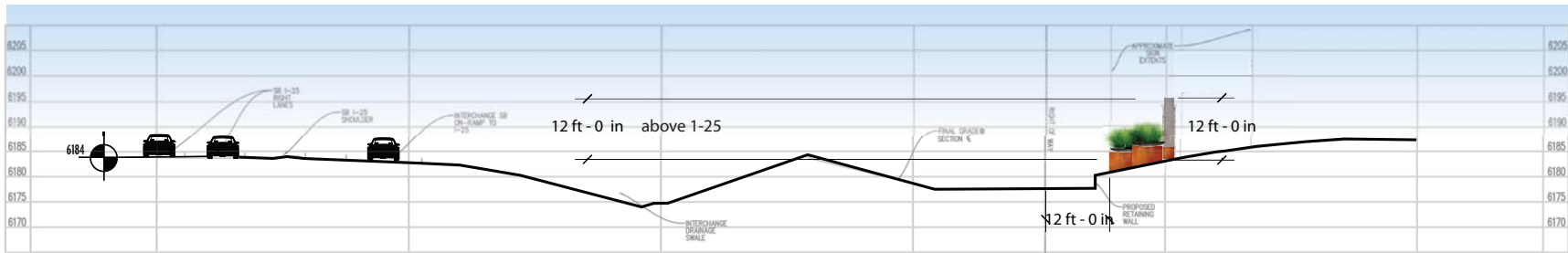
October 26, 2015

Secondary Monument / MS Elevations

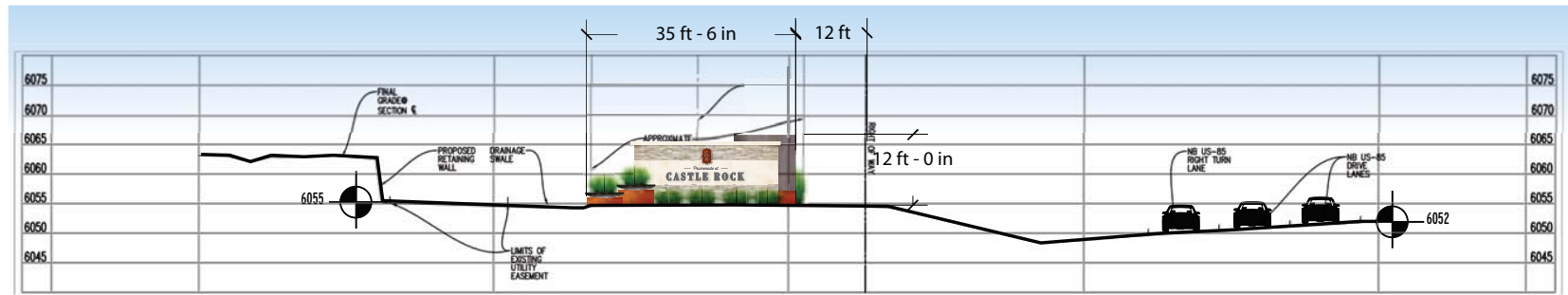
These drawings are for the sole purpose of expressing visual design intent and are not intended for construction purposes. All aspects engineering, fabrication, installation, and any resulting documentation are the responsibility of the Fabricator.



MS 2 | Section Not to Scale



MS 4 | Section Not to Scale



MS 17 | Section Not to Scale



Promenade at
CASTLE ROCK

my
**PAUL MACK
ARCHITECTURE**



STUDIO SIX

The Promenade at Castle Rock
PROJECT

OWNER

Alberta Development Partners
DEVELOPMENT MANAGER

PLM, TJ
PLM & Studio No 6

OWNER'S REPRESENTATIVE:
PLM Architecture 1 (303) 953-1014
1155 Atlantis Ave. www.plmarchitecture.com
Lafayette, CO 80026 Paul Mack

PROJECT ARCHITECT:

PROJECT DESIGNER:
Studio Six 1 (303) 652-6230
1114 Neon Forest #6 tracj@studio6.com
Longmont, CO 80504 Traci Jones

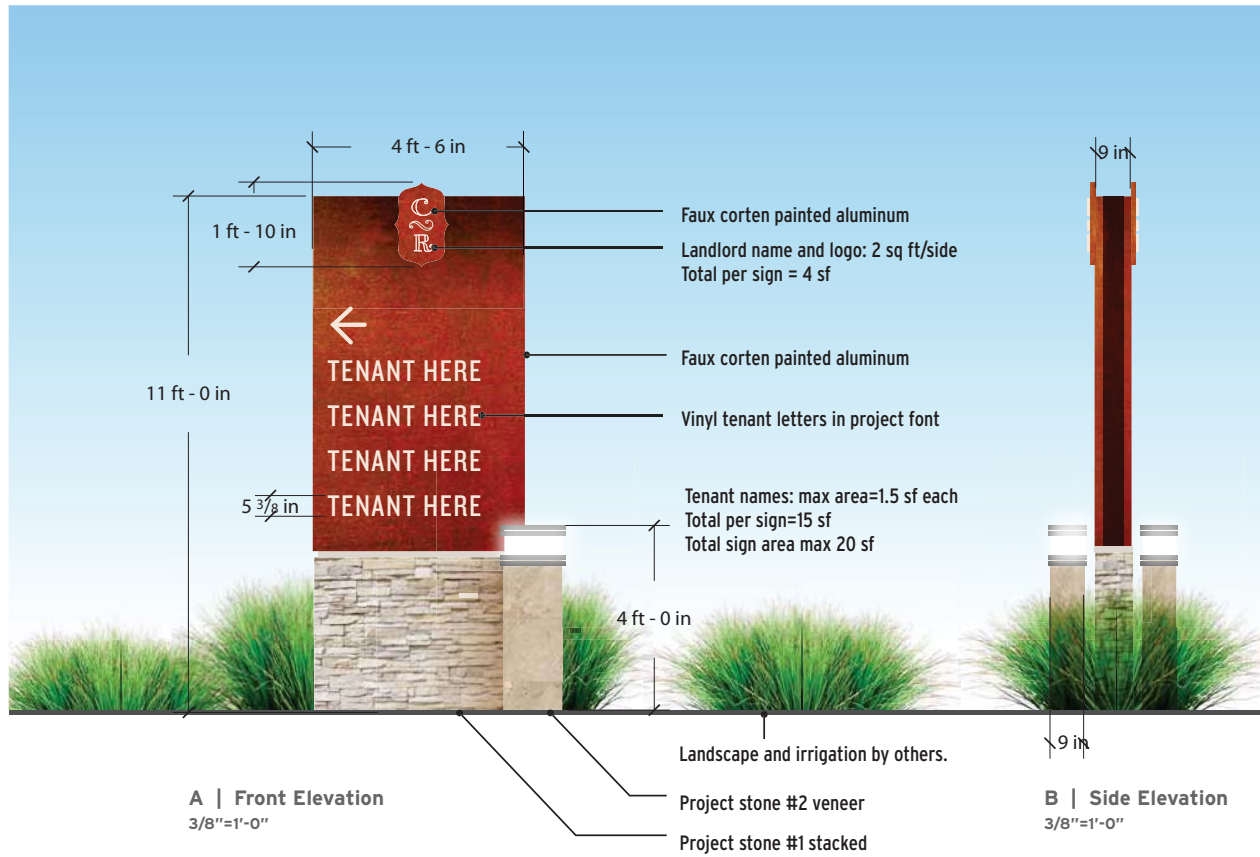
ORIGINAL ISSUE:	[Oct 26 2015]
REVISIONS:	

October 26, 2015

Secondary Monument / MS Sections

These drawings are for the sole purpose of expressing visual design intent and are not intended for construction purposes. All aspects engineering, fabrication, installation, and any resulting documentation are the responsibility of the Fabricator.

Note:
Typical for VD6 - VD13
and VD22.



The Promenade at Castle Rock
PROJECT

OWNER

Alberta Development Partners
DEVELOPMENT MANAGER

PLM, TJ
PLM & Studio No 6

OWNER'S REPRESENTATIVE:
PLM Architecture 1 (303) 953.1014
 1155 Atlantis Ave. www.plmarchitecture.com
 Lafayette, CO 80026 Paul Mack

PROJECT ARCHITECT:

PROJECT DESIGNER:
Studio Six 1 (303) 652-6230
 1114 Neon Forest #6 tracj@studio6.com
 Longmont, CO 80504 Traci Jones

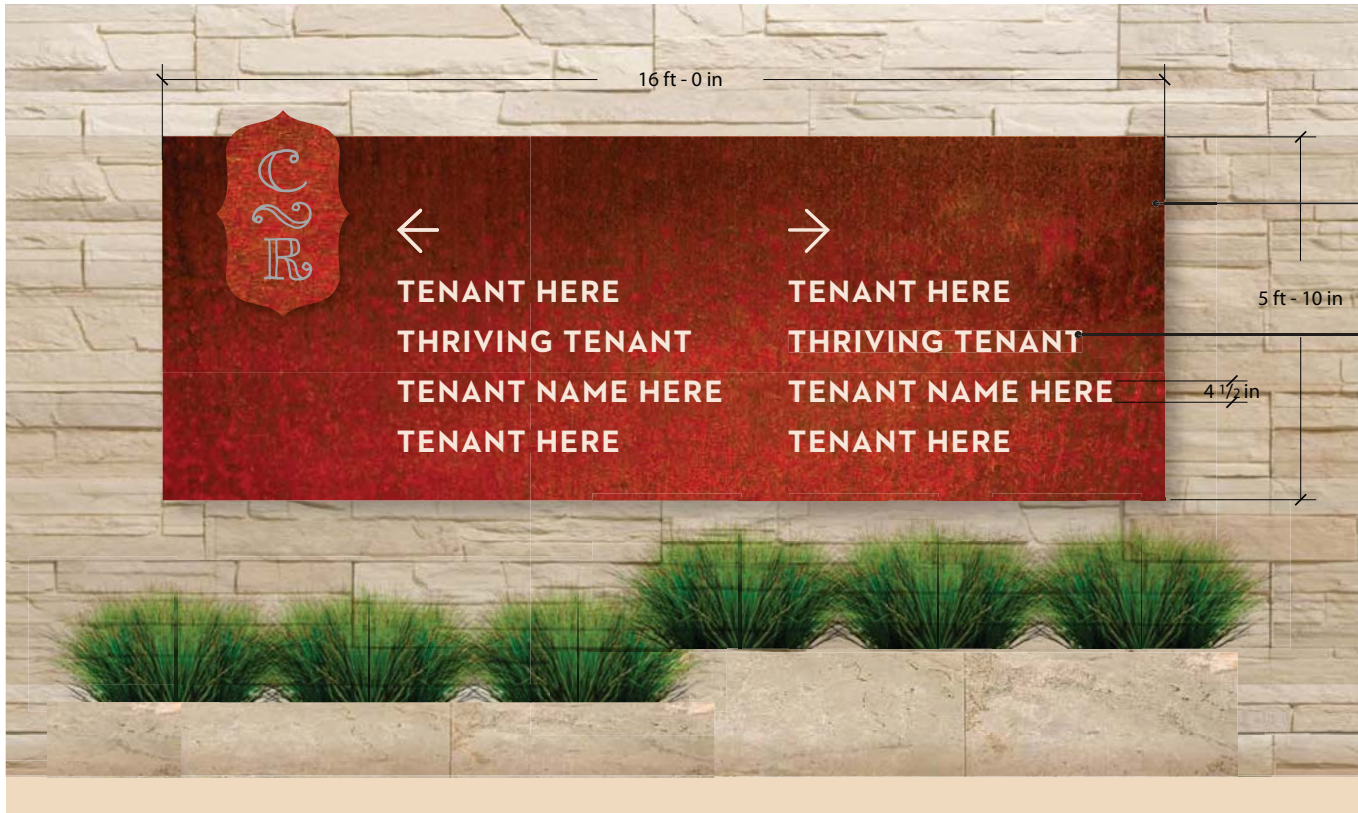
ORIGINAL ISSUE:	[Oct 26 2015]
REVISIONS:	

October 26, 2015

Vehicular
Directional / VD

These drawings are for the sole purpose of expressing visual design intent and are not intended for construction purposes. All aspects engineering, fabrication, installation, and any resulting documentation are the responsibility of the Fabricator.

Note:
Typical for W



Painted faux corten .125
aluminum panel on 1 1/2"
aluminum frame

4 1/2" vinyl letters in
project font

A | Elevation
1/2"=1'-0"



The Promenade at Castle Rock
PROJECT

OWNER

Alberta Development Partners
DEVELOPMENT MANAGER

PLM, TJ
PLM & Studio No 6

OWNER'S REPRESENTATIVE:
PLM Architecture 1 (303) 953-1014
1155 Atlantis Ave. www.plmarchitecture.com
Lafayette, CO 80026 Paul Mack

PROJECT ARCHITECT:

PROJECT DESIGNER:
Studio Six 1 (303) 652-6230
1114 Neon Forest #6 traci@studio6.com
Longmont, CO 80504 Traci Jones

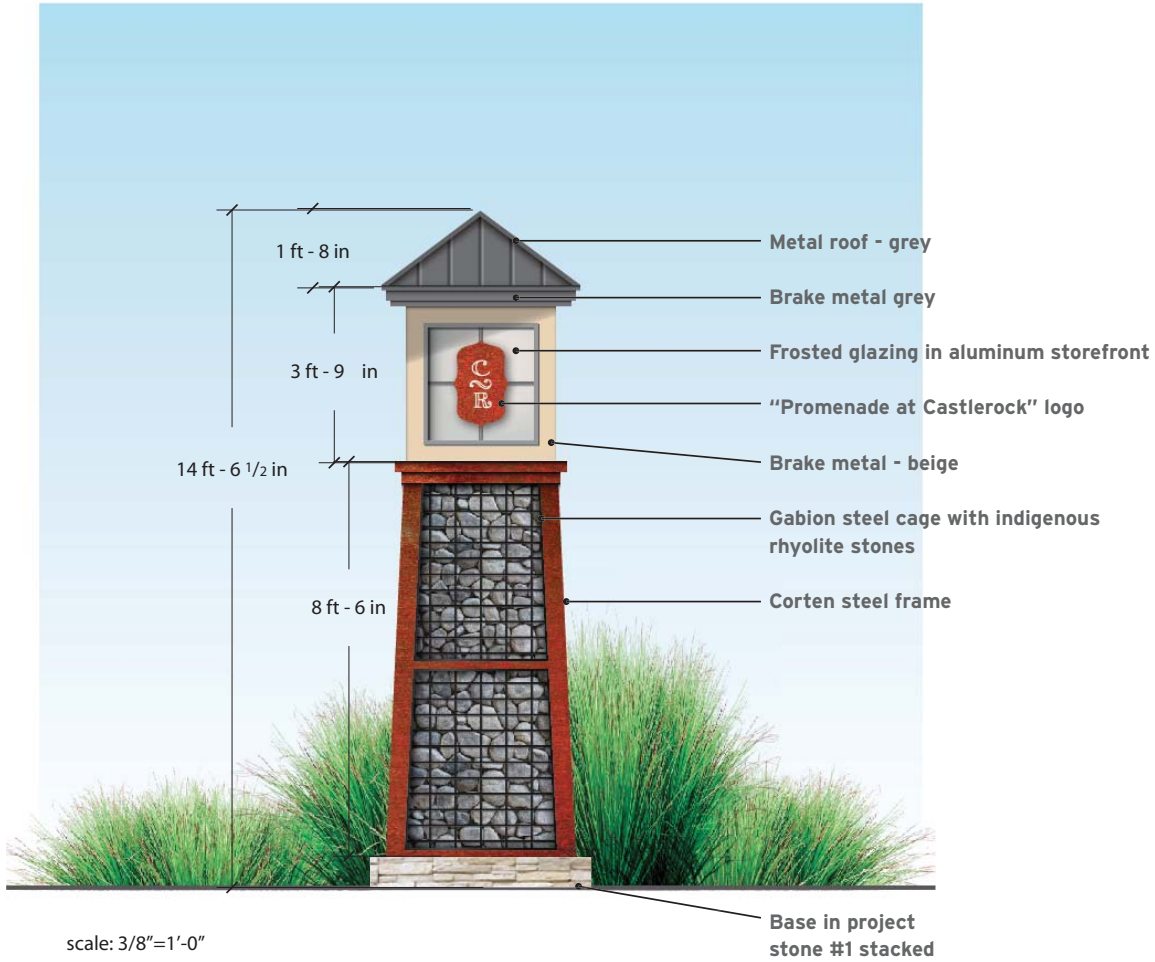
ORIGINAL ISSUE:	[Oct 26 2015]
REVISIONS:	

October 26, 2015

Wall Sign / W

These drawings are for the sole purpose of expressing visual design intent and are not intended for construction purposes. All aspects engineering, fabrication, installation, and any resulting documentation are the responsibility of the Fabricator.

Note:
Typical for G20 & G23.



The Promenade at Castle Rock
PROJECT

OWNER

Alberta Development Partners
DEVELOPMENT MANAGER

PLM, TJ
PLM & Studio No 6

OWNER'S REPRESENTATIVE:
PLM Architecture 1 (303) 953.1014
1155 Atlantis Ave. www.plmarchitecture.com
Lafayette, CO 80026 Paul Mack

PROJECT ARCHITECT:

PROJECT DESIGNER:
Studio Six 1 (303) 652-6230
1114 Neon Forest #6 tracj@studio6.com
Longmont, CO 80504 Traci Jones

ORIGINAL ISSUE:	[Oct 26 2015]
REVISIONS:	

October 26, 2015

Gabion Tower
Round-about / G

These drawings are for the sole purpose of expressing visual design intent and are not intended for construction purposes. All aspects engineering, fabrication, installation, and any resulting documentation are the responsibility of the Fabricator.



The Promenade at Castle Rock
PROJECT

OWNER

Alberta Development Partners
DEVELOPMENT MANAGER

PLM, TJ
PLM & Studio No 6

OWNER'S REPRESENTATIVE:
PLM Architecture 1 (303) 953.1014
1155 Atlantis Ave. www.plmarchitecture.com
Lafayette, CO 80026 Paul Mack

PROJECT ARCHITECT:

PROJECT DESIGNER:
Studio Six 1 (303) 652-6230
1114 Neon Forest #6 tracj@studio6.com
Longmont, CO 80504 Traci Jones

ORIGINAL ISSUE: **[Oct 26 2015]**

REVISIONS:	

October 26, 2015

Sign Area Totals

These drawings are for the sole purpose of expressing visual design intent and are not intended for construction purposes. All aspects engineering, fabrication, installation, and any resulting documentation are the responsibility of the Fabricator.

Owner-Provided Signage Area Calculations				Tenant Name Area, Maximum Allowable (SF)	Combined Area (SF)	Quantity	Total Area (SF)
Sign Type	Sign Name	Locations	Project Name Area (SF)				
P	Highway Pylon	P3, P5	0	670	670	2	1340
PS	Secondary Highway Pylon	P16	0	400	400	1	400
M	Monument	M1, M15,	80	40	120	2	240
MS	Secondary Monument	MS2, MS4, MS17, MS21	80	0	80	4	320
VD	Vehicular Directional	VD6, VD7, VD8, VD9, VD10, VD11, VD12, VD13, VD22	4	16	20	9	180
W	Wall		4	16	20	0	0
G	Gabion	G20, G23	32	0	32	2	64
					Allowance for Additional Interior Wayfinding Signage		200
					Total Project Signage Area		2744

MS18 and W19 are outside of the Promenade at Castle Rock PD and are subject to the Castle Pines Commercial PD Zoning Regulations.