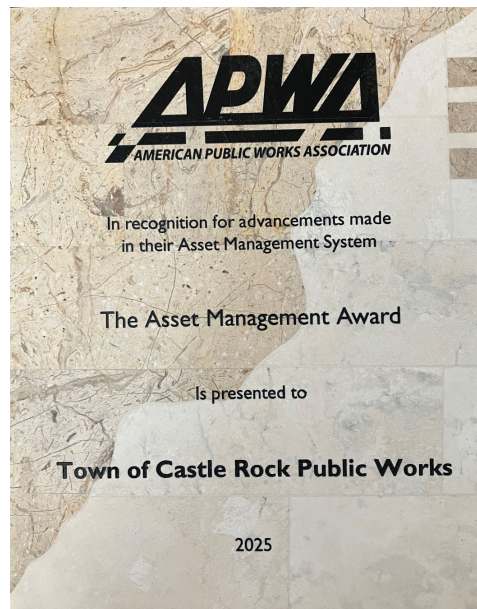




Monthly Report



August 2025



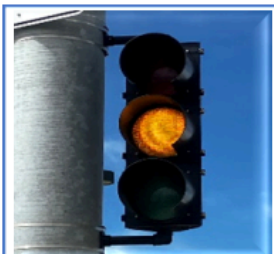
Pavements



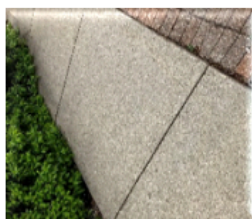
Traffic Control



Street Lights



Signals



Sidewalks



Structures



Verge



Fleet

Capital Improvement Program projects

Crystal Valley interchange

- Work continues on the retaining wall along the East Frontage Road, with lane closures implemented as needed.
- Pavement removals of West Frontage Road south of Territorial began in preparation for construction of the I-25 southbound ramps



Work continues on the west side of the project with installation of curb & gutter and sidewalks in preparation of paving operations. Installation of conduit for the electrical infrastructure continues in preparation for the installation of a new traffic signal and streetlights later this year.

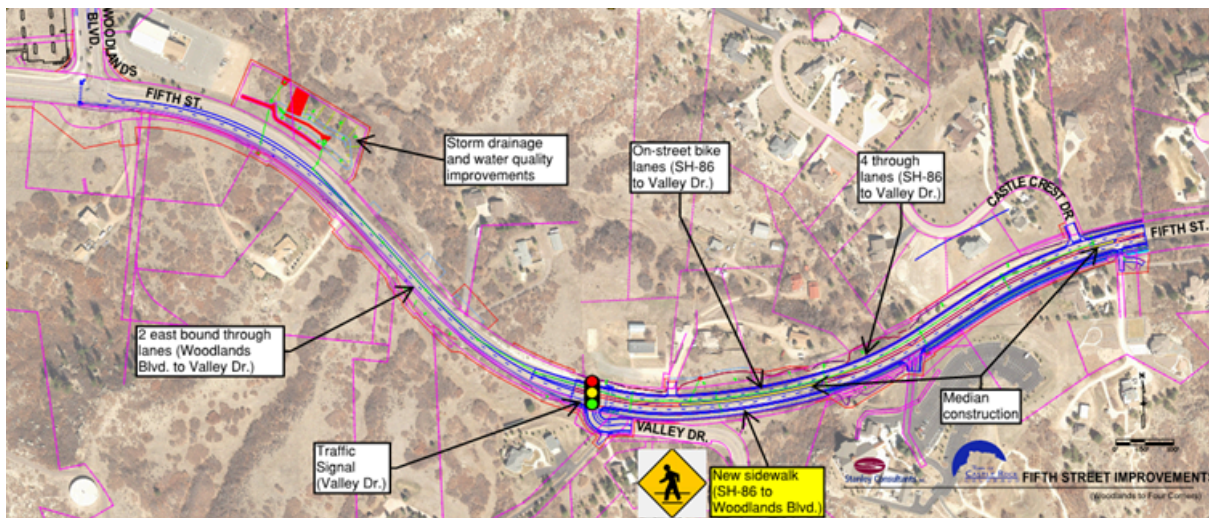
East side (Package 1), final grading and seeding is anticipated to wrap up in September.

Project Phase: Construction

Targeted Construction Completion: Summer of 2027

Fifth Street Widening

Contracts for construction were approved by Town Council, with construction expected to start in early October.



Project Phase: Phase 1 – Construction, Phase 2 – initiate Design and ROW acquisition in 2027

Targeted Construction Completion: Phase 1 - Winter of 2026, Phase 2 – Winter of 2029

Crowfoot Valley Road Widening

Work continues across the project corridor, achieving major milestones in the month of August including signal pole installations at Sapphire Pointe Boulevard and Fire Station 155. The crews also installed 6 new storm drainage structures and began replacement of sanitary sewer infrastructure. Half of the widening areas were graded and prepared for paving operations in September.

Project Phase: Construction

Targeted Construction Completion: Fall of 2026



Relocation of Dawson Ridge Blvd and West Frontage Rd



Paving of the southern portion of Dawson Trails Boulevard was completed. Coordination with the Dawson Trails developer to install infrastructure and before roundabout remains on schedule.

Project Phase: Construction

Targeted Construction Completion: Fall of 2025

Wolfensberger Widening improvements project

Right of way (ROW) acquisition efforts are ongoing, with offers extended and Purchase & Sale Agreements currently under review by property owners.



Project Phase: ROW Acquisition

Targeted Construction Completion: Fall of 2031

Pavements

Staff continues to advance pavement maintenance with current efforts on pavement replacement and rehabilitation in the Pavement Maintenance Programs (PMP) Central Region. Paving operations were concluded in the Craig and Gould neighborhood. Paving and patching operations continue in the Black Feather and Woodlands neighborhoods. Additional maintenance is anticipated to begin on Castle Oaks Drive and the Red Hawk neighborhood in September.



Three large area asphalt repairs were made during August. These operations were dispersed in nearly all areas of Town. Sixty tons of hot mix asphalt were used to complete these repairs.

Just over 3,100 lbs. of cold mix asphalt was used which is the equivalent of 208 potholes throughout Town.

Street sweeping was conducted in the downtown and business areas which covered 29.7 lane miles, removing 67 cubic yards of material from the roadways.

Sidewalks

Curb, Gutter, and Sidewalk Project

The Town has identified approximately 12,400 linear feet of sidewalk and 11,500 square yards of handicap ramps for replacement across several neighborhoods, including The Woodlands, Red Hawk, Craig and Gould, and others.

Much of this work is necessary to address safety concerns such as cracking, uneven surfaces, and trip hazards. Another key driver is compliance with the Americans with Disabilities Act (ADA), which establishes strict design standards to ensure sidewalks and ramps are safe and accessible for all users.



Structures

2025 Bridge Maintenance Program



Emergency repairs have been identified on a Castle Oaks Drive bridge near the Rocky View Road intersection, with work proposed to begin in mid-October

Repairs on the Plum Creek bridge over the UPRR were completed.

At the Castle Rock Parkway/US 85 Interchange, the installation of the detectable warning material for handicap ramps was completed. Work continues on installing pavement markings.

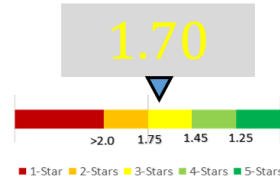


Traffic signals and street lights

August saw improvements to the operations of all traffic signals and streetlights, while maintaining steady operations of all beacons. Progress continues for new traffic signal installations and safety improvements at key locations.

Monthly asset highlights

- 96% Streetlights Operational: 0%
- 94% Flashing Beacons Operational: -2%
- 1.70 Travel Time Index



Project highlights

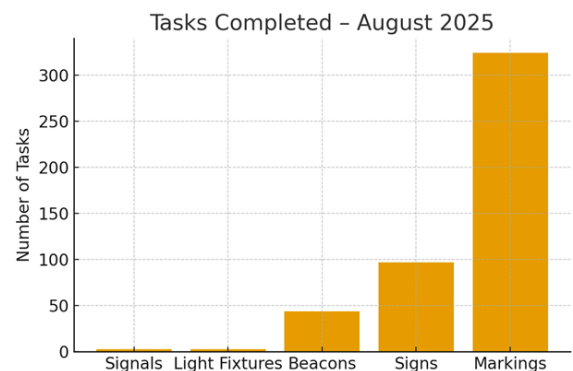
- Pre-construction meeting held with contractor for a new signal at Prairie Hawk Dr. & Low Meadow Blvd.
- Traffic signal poles stood up for new signal at Crowfoot Valley Rd. & Sapphire Pt. Blvd.
- Construction for two new signals on Crystal Valley Pkwy west of I-25 continues
- Design continuing for two new signals at Founders Pkwy / Crimson Sky Dr. and at Crowfoot Valley Rd. / Macanta Blvd.



Traffic maintenance

In August, the section performed traffic signal and streetlight preventative maintenance and the following repair tasks for assets we manage:

- 324 roadway marking tasks
- 97 sign tasks
- 44 beacon tasks
- 3 traffic signal tasks, and
- 3 street lights
- 3 special events



Fleet

During August, 142 work orders were completed, with 64 of them being preventative maintenance. There was a total of 558 labor hours this month with 77% recorded as direct labor to work orders. The parts cost totaled \$45k. The town vehicle availability was unchanged from July at 93%. Our heavy technicians have been focusing on off season repairs for dump trucks and snow removal equipment to prep prior to the next season. Two new technicians will begin in September leaving us one open position to fill.

Total town assets listed in our Fleet Management Information System (Faster Web) is currently at 594. There are 18 new vehicles on order. Four new police vehicles were put in service in August. There are 18 assets scheduled for decommissioning and will be sold at auction in the next 6 months.



Verge

Verge operations continued with mowing, trimming, and removal of trash along 81 miles of roadway edge

