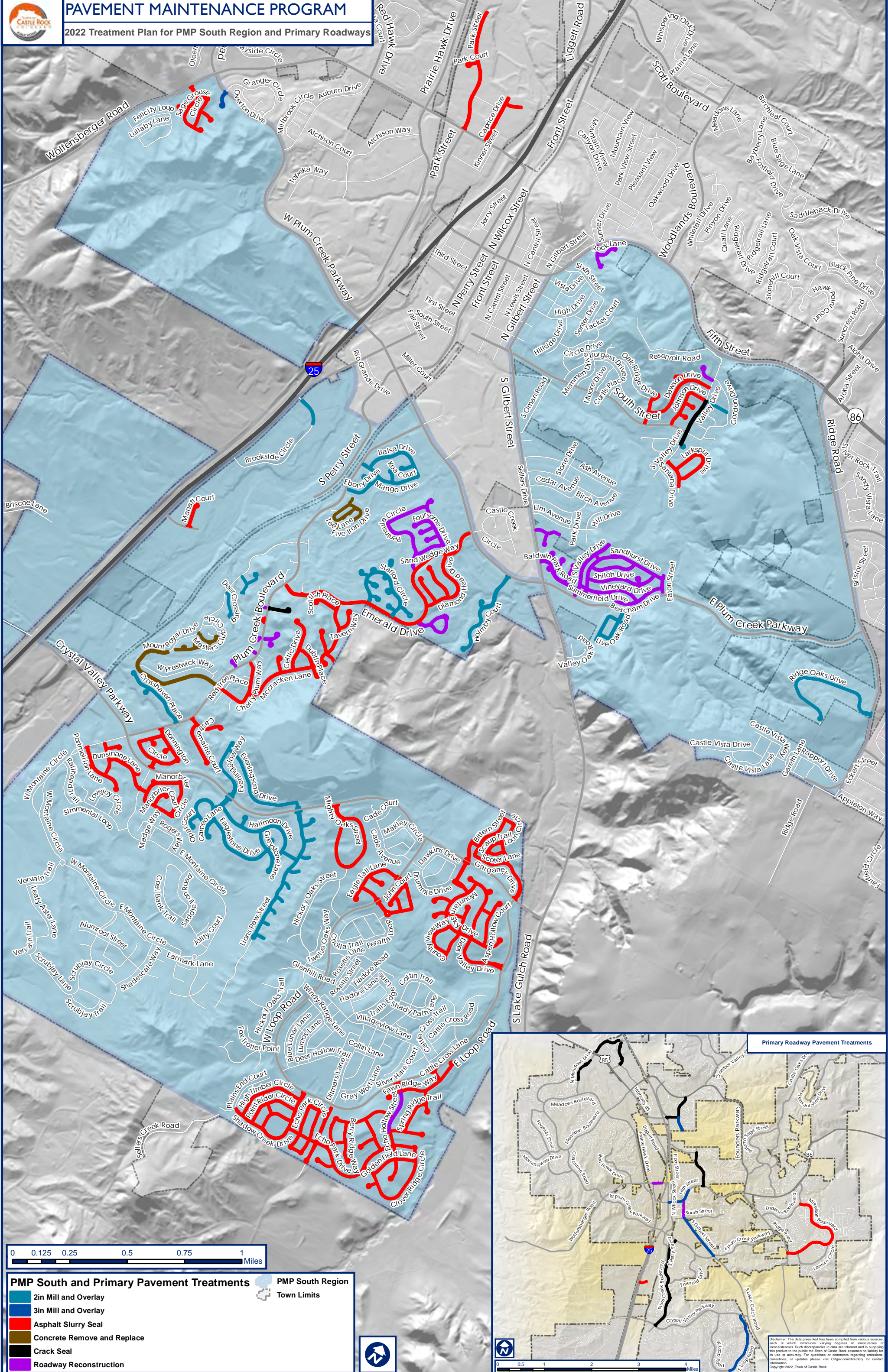




PAVEMENT MAINTENANCE PROGRAM

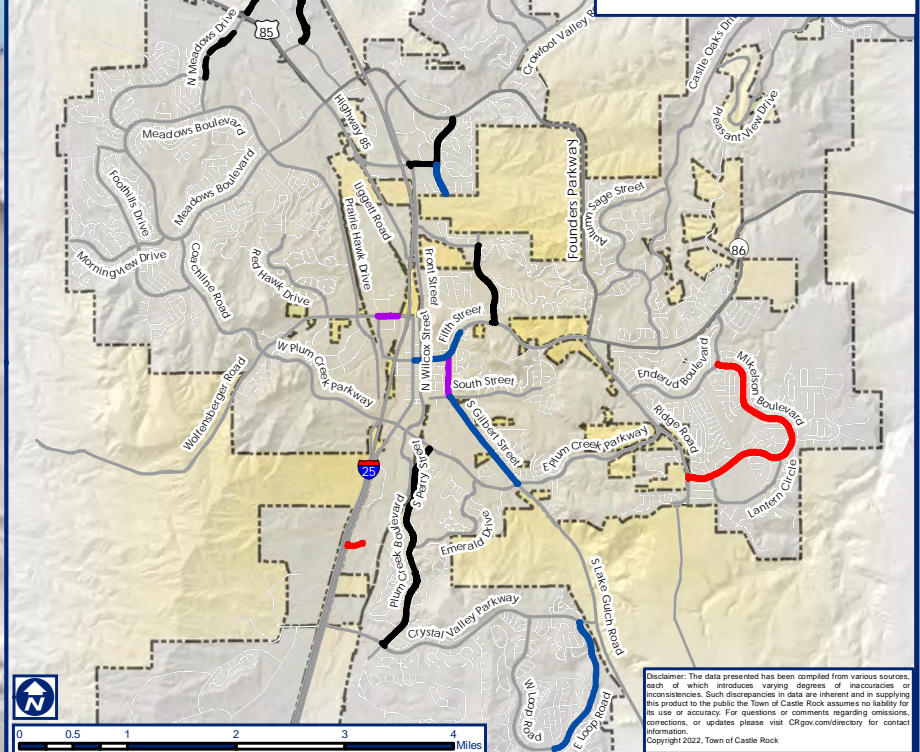
2022 Treatment Plan for PMP South Region and Primary Roadways



PMP South and Primary Pavement Treatments		PMP South Region	
█	2in Mill and Overlay		PMP South Region
█	3in Mill and Overlay		Town Limits
█	Asphalt Slurry Seal		
█	Concrete Remove and Replace		
█	Crack Seal		
█	Roadway Reconstruction		



Primary Roadway Pavement Treatments



Disclaimer: The data presented has been compiled from various sources, each of which introduces varying degrees of inaccuracy or error. Castle Rock assumes no liability for the use or accuracy of the data. For questions or comments regarding omissions, corrections, or updates please visit CRgov.com/directory for contact information. Copyright 2022, Town of Castle Rock