

# 2021 SUMMARY OF NEW BUILDING & INFRASTRUCTURE ACTIVITY

TOWN COUNCIL  
MARCH 1, 2022



# DEVELOPMENT UPDATES

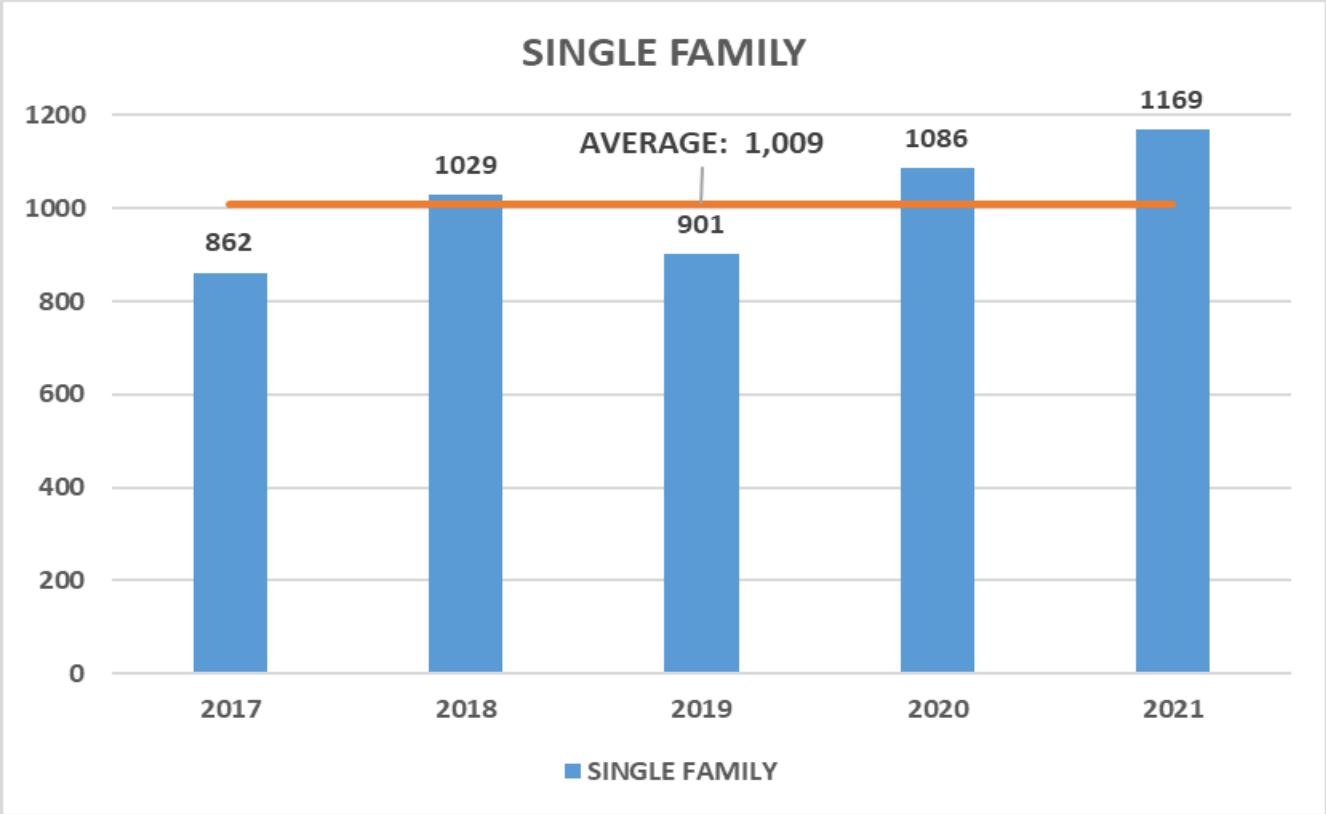
## 2021 DEVELOPMENT ACTIVITY SUMMARY

*Overall a very strong year for building and development permitting and construction.*

- Residential Building Permits 1,707 permits (1,169 SF/538 MF)
- Non-residential Building Permits 80,083 square feet added to community  
\$15.1 M building valuation/investment
- Infrastructure site construction \$16.7 M constructed in new neighborhoods and commercial areas

# DEVELOPMENT UPDATES

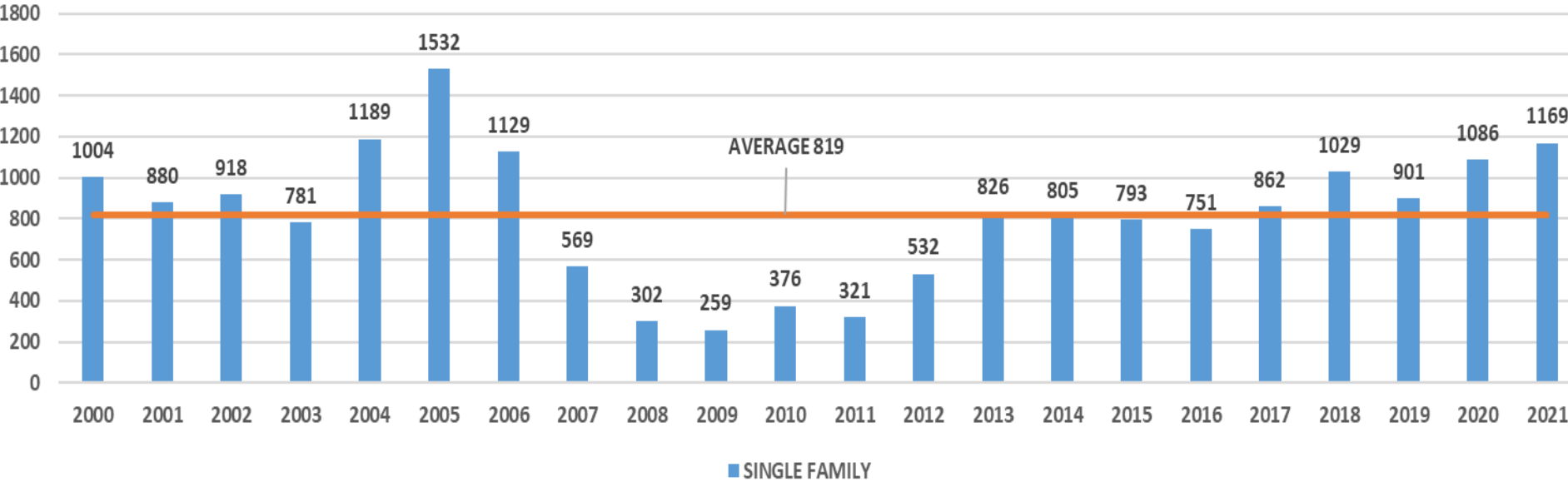
## 2021 DEVELOPMENT ACTIVITY SUMMARY



# DEVELOPMENT UPDATES

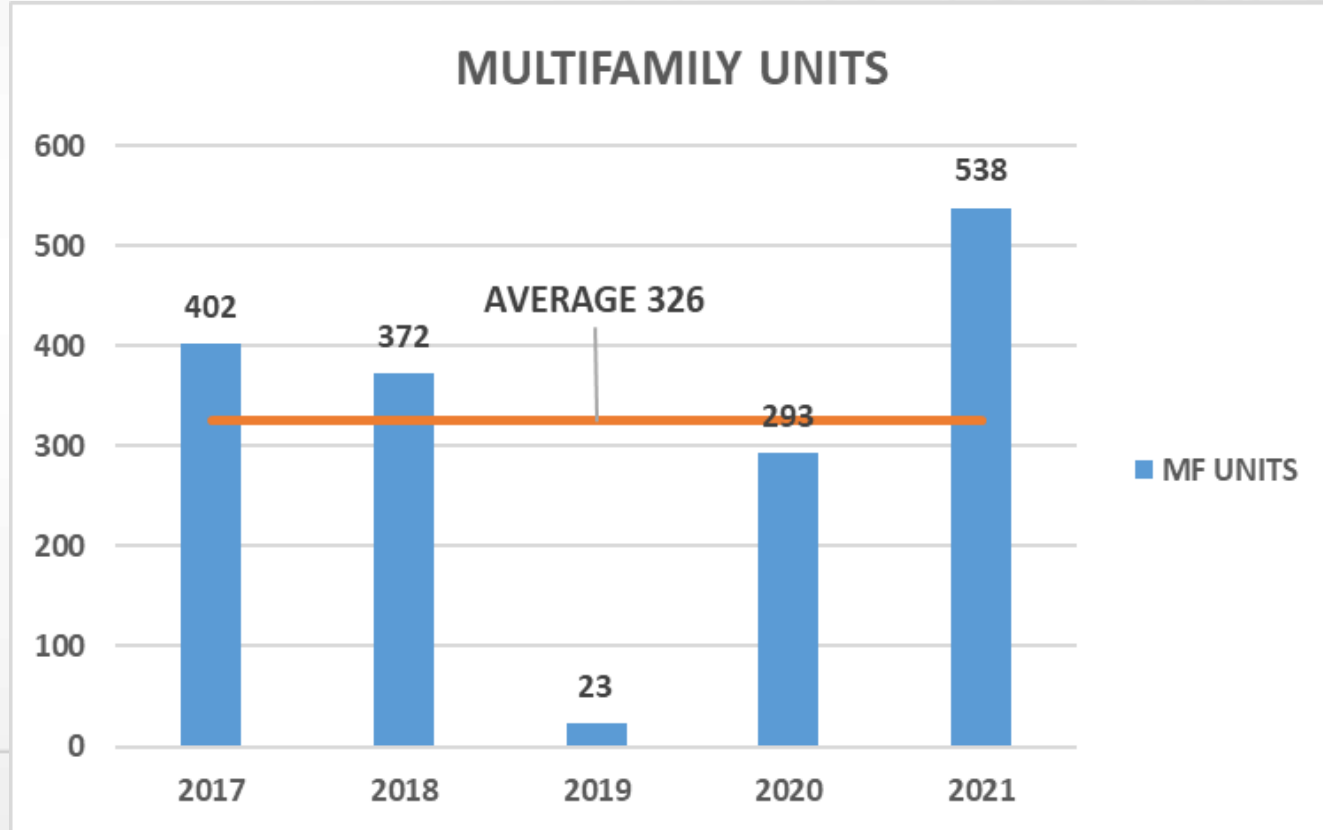
## 2021 DEVELOPMENT ACTIVITY SUMMARY

### SINGLE FAMILY



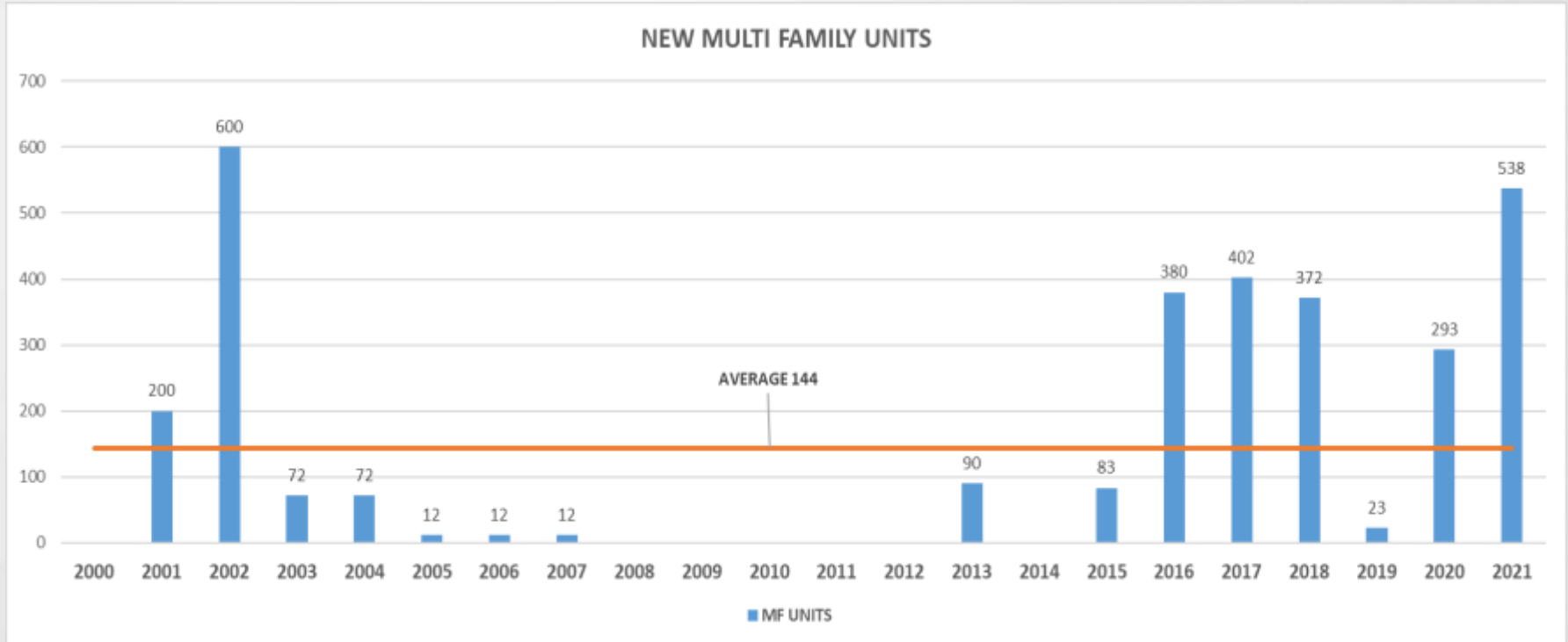
# DEVELOPMENT UPDATES

## 2021 DEVELOPMENT ACTIVITY SUMMARY



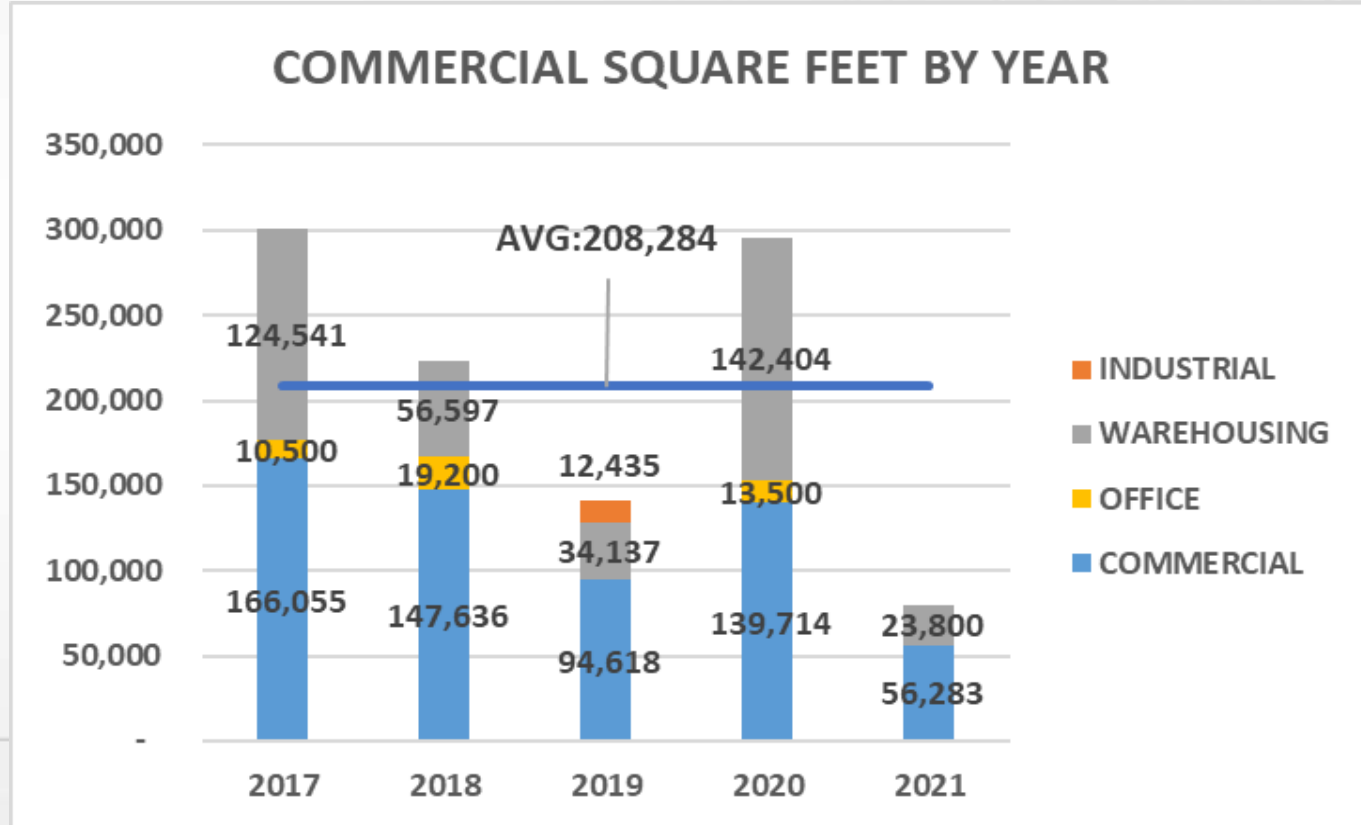
# DEVELOPMENT UPDATES

## 2021 DEVELOPMENT ACTIVITY SUMMARY



# DEVELOPMENT UPDATES

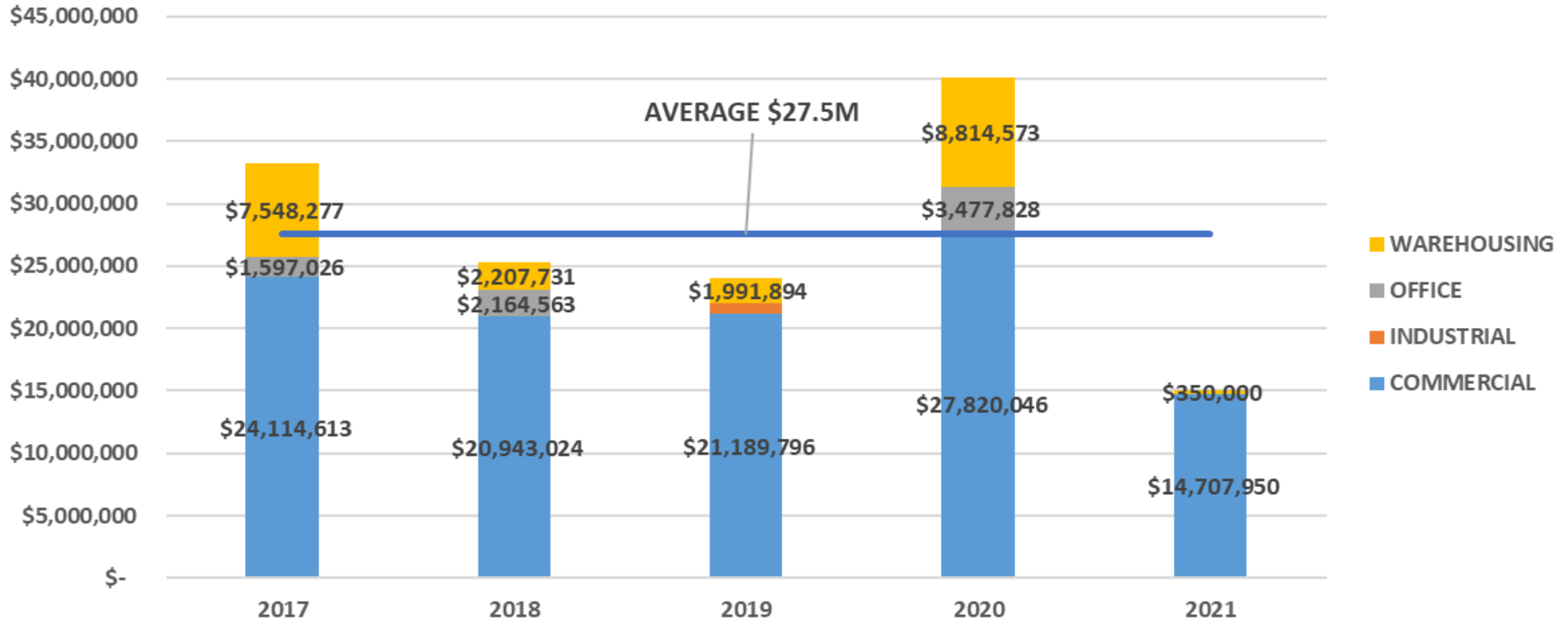
## 2021 DEVELOPMENT ACTIVITY SUMMARY



# DEVELOPMENT UPDATES

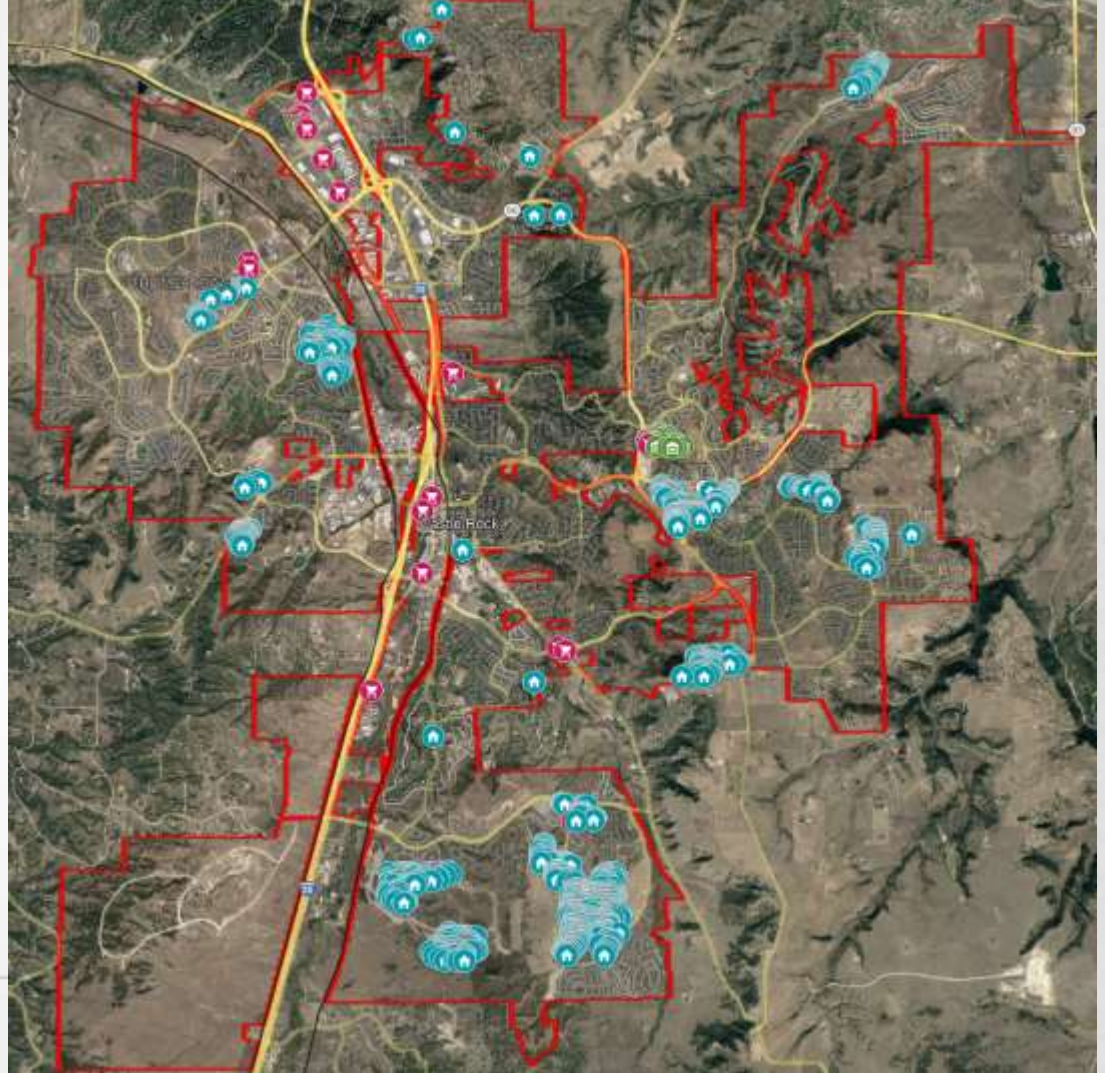
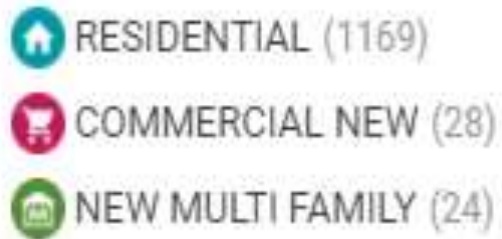
## 2021 DEVELOPMENT ACTIVITY SUMMARY

### COMMERCIAL VALUATION BY YEAR





# 2021 Building Permit Activity



# DEVELOPMENT UPDATES

## 2021 DEVELOPMENT ACTIVITY SUMMARY

*Top Residential Subdivisions in 2021:*

Subdivision Name	Number of New Residential Building Permits in 2021	Number of New Residential Building Permits in 2020
Crystal Valley Ranch	450	403
Terrain	168	158
Lanterns/Montaine	168	53
Meadows	150	224
Founders Village	108	96

# DEVELOPMENT UPDATES

## 2021 DEVELOPMENT ACTIVITY

*Crystal Valley Ranch,  
450 Single Family Permits*



# DEVELOPMENT UPDATES

## 2021 DEVELOPMENT ACTIVITY SUMMARY

*Terrain,  
168 Single Family  
Permits*



# DEVELOPMENT UPDATES

## 2021 DEVELOPMENT ACTIVITY

*Lanterns/Montaine,  
168 Single Family  
Permits*



# DEVELOPMENT UPDATES

## 2021 DEVELOPMENT ACTIVITY

*Meadows,  
150 Single Family  
Permits*



# DEVELOPMENT UPDATES

## 2021 DEVELOPMENT ACTIVITY

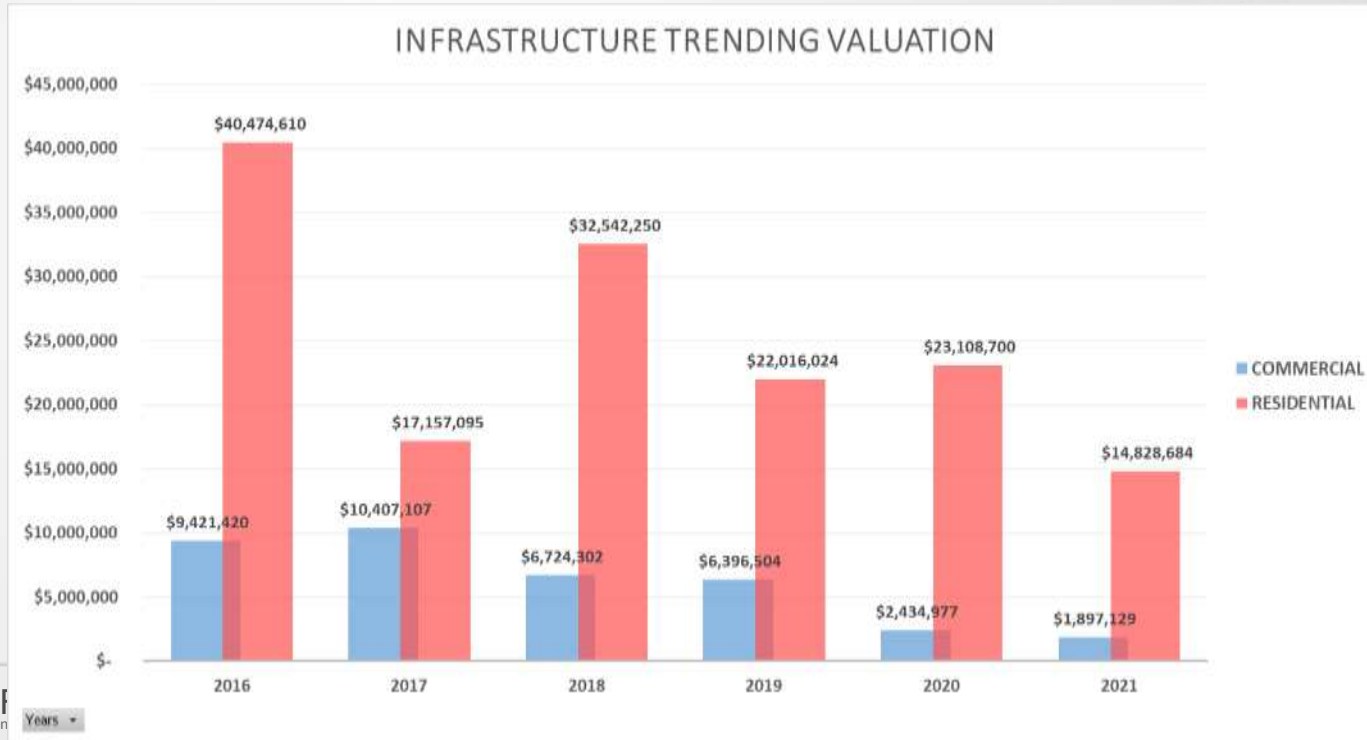
*Founders Village,  
108 Single Family  
Permits*



# DEVELOPMENT UPDATES

## 2021 DEVELOPMENT ACTIVITY SUMMARY

*How does 2021 compare to past years for Infrastructure?*







# QUESTIONS?