

Yearly Sales Tax Revenue



	2013	2014	2015	2016	2017	2018
<i>Prior Year Collections</i> *	\$ 247,762	\$ 119,928	\$ 231,220	\$ 166,999	\$ 175,216	\$ 82,847
<i>Jan</i>	2,257,836	2,336,654	2,529,828	2,708,833	2,939,153	3,303,966
<i>Feb</i>	2,064,347	2,246,138	2,356,187	2,628,882	2,942,236	3,044,888
<i>Mar</i>	2,649,418	3,033,526	3,249,291	3,274,629	3,856,165	4,103,325
<i>Apr</i>	2,320,815	2,595,907	2,697,616	2,991,981	3,559,192	3,487,035
<i>May</i>	2,707,992	2,843,580	3,089,557	3,235,763	3,703,943	4,043,517
<i>Jun</i>	2,997,737	3,295,338	3,607,345	3,836,672	4,304,723	4,493,116
<i>Jul</i>	2,722,544	2,905,715	3,307,172	3,547,768	3,899,703	4,080,653
<i>Aug</i>	2,809,796	3,041,373	3,336,810	3,551,913	3,898,049	4,273,947
<i>Sep</i>	2,936,950	3,215,915	3,513,438	3,946,825	4,190,106	4,313,137
<i>Oct</i>	2,685,614	2,757,974	2,999,064	3,528,073	3,513,275	3,984,007
<i>Nov</i>	2,772,558	2,951,578	3,055,060	3,479,493	3,877,471	4,090,571
<i>Dec</i>	4,002,002	4,113,480	4,367,857	4,855,770	5,426,023	5,521,507
Totals	\$ 33,175,372	\$ 35,457,107	\$ 38,340,444	\$ 41,753,601	\$ 46,285,255	\$ 48,822,516

Year to Year Change

6.9%

8.1%

8.9%

10.9%

5.5%

Footnote:

* Prior Year Collections line item includes payments received in current year applicable to prior year sales tax returns. As prior year accounting records have been closed and the "previous period" amount is not deemed material to the previous year YTD total, the revenue will be recorded in December of the current year. Prior year monthly and annual totals will not change due to a receipt of a late payment.

Three Year Sales Tax Revenue Comparison



	2016	2017	2016-2017 % Change	2018	2017-2018 % Change
<i>Previous Period *</i>	\$ 166,999	\$ 175,216	NA	\$ 82,847	NA
<i>Jan</i>	2,708,833	2,939,153	8.5%	3,303,966	12.4%
<i>Feb</i>	2,628,882	2,942,236	11.9%	3,044,888	3.5%
<i>Mar</i>	3,274,629	3,856,165	17.8%	4,103,325	6.4%
<i>Apr</i>	2,991,981	3,559,192	19.0%	3,487,035	-2.0%
<i>May</i>	3,235,763	3,703,943	14.5%	4,043,517	9.2%
<i>Jun</i>	3,836,672	4,304,723	12.2%	4,493,116	4.4%
<i>Jul</i>	3,547,768	3,899,703	9.9%	4,080,653	4.6%
<i>Aug</i>	3,551,913	3,898,049	9.7%	4,273,947	9.6%
<i>Sep</i>	3,946,825	4,190,106	6.2%	4,313,137	2.9%
<i>Oct</i>	3,528,073	3,513,275	-0.4%	3,984,007	13.4%
<i>Nov</i>	3,479,493	3,877,471	11.4%	4,090,571	5.5%
<i>Dec</i>	4,855,770	5,426,023	11.7%	5,521,507	1.8%
Totals	\$ 41,753,601	\$ 46,285,255	10.9%	\$ 48,822,516	5.5%
Revenue	\$ 41,586,602	\$ 46,110,039	10.9%	\$ 48,739,669	5.7%
Less Audit Revenue	45,609	399,172	775.2%	482,950	21.0%
Less Promenade PIF	108,903	928,390	752.5%	1,180,483	27.2%
Less DDA TIF*	123,434	991,841		1,656,650	67.0%
Revenue Net of Audit Rev, Promenade, and DDA TIF	\$ 41,308,656	\$ 43,790,636	6.0%	\$ 45,419,587	3.7%

* DDA TIF number includes current year TIF and any proir year corrections/adjustments.

Monthly Sales Tax Comparisons

December 2017	December 2018	% Change Month
\$ 5,426,023	\$ 5,521,507	1.8%
2017	2018	% Change
\$ 46,285,255	\$ 48,822,516	5.5%



Monthly Sales Tax Comparisons - By Geographical Area

Category	December 2017	December 2018	% Change Month	% Total Month
Milestone/Metzler	\$ 1,135,698	\$ 1,096,817	-3.4%	19.9%
Outlet Mall	999,477	923,466	-7.6%	16.7%
Promenade	835,597	1,064,025	27.3%	19.3%
Out of Town	577,471	620,696	7.5%	11.2%
Out of State	621,027	614,600	-1.0%	11.1%
Downtown	408,528	386,266	-5.4%	7.0%
Founders Market Place	251,742	261,655	3.9%	4.7%
Area Around Outlet Mall	124,007	125,326	1.1%	2.3%
Wolfensberger	142,038	132,146	-7.0%	2.4%
Justice	120,542	108,331	-10.1%	2.0%
Plum Creek	106,166	82,043	-22.7%	1.5%
Misc/ Other	56,676	56,745	0.1%	1.0%
Meadows	41,911	49,391	17.8%	0.9%
Audit Revenue	5,143	-	-100.0%	0.0%

Category	2017	2018	% Change	% Total
Milestone/Metzler	\$ 11,388,702	\$ 10,927,906	-4.0%	22.4%
Outlet Mall	8,103,474	8,068,259	-0.4%	16.5%
Promenade	5,162,059	7,375,428	42.9%	15.1%
Out of Town	4,542,131	4,846,529	6.7%	9.9%
Out of State	4,220,444	4,372,113	3.6%	9.0%
Downtown	4,195,952	4,260,977	1.5%	8.7%
Founders Market Place	1,585,537	1,721,337	8.6%	3.5%
Area Around Outlet Mall	1,618,238	1,697,074	4.9%	3.5%
Wolfensberger	1,705,673	1,619,822	-5.0%	3.3%
Justice	1,248,701	1,209,024	-3.2%	2.5%
Plum Creek	1,064,565	1,031,482	-3.1%	2.1%
Misc/ Other	592,176	671,109	13.3%	1.4%
Meadows	458,431	538,506	17.5%	1.1%
Audit Revenue	399,172	482,950	21.0%	1.0%

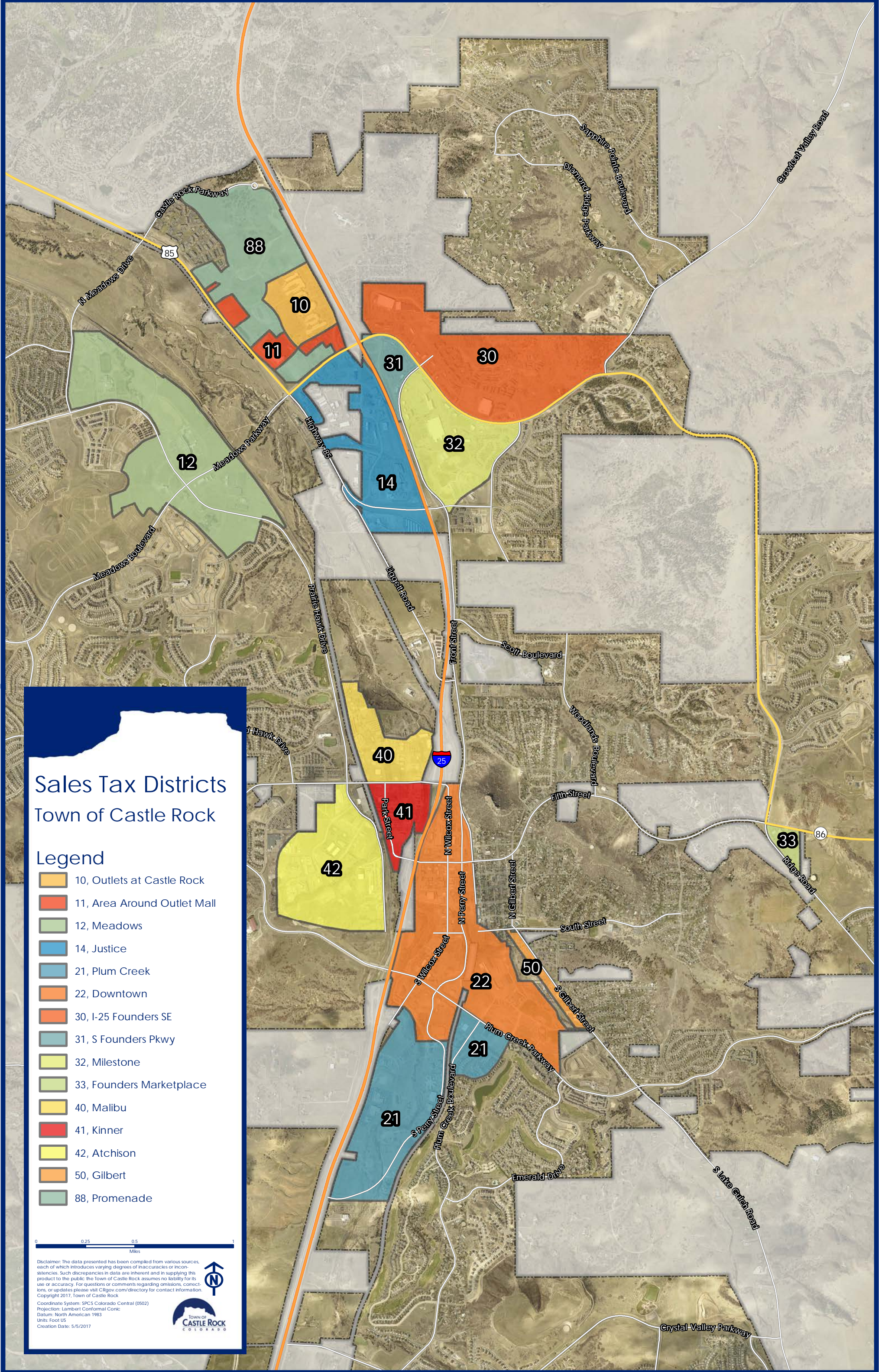
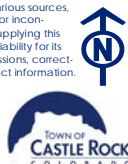
Sales Tax Districts Town of Castle Rock

Legend

- 10, Outlets at Castle Rock
- 11, Area Around Outlet Mall
- 12, Meadows
- 14, Justice
- 21, Plum Creek
- 22, Downtown
- 30, I-25 Founders SE
- 31, S Founders Pkwy
- 32, Milestone
- 33, Founders Marketplace
- 40, Malibu
- 41, Kinner
- 42, Atchison
- 50, Gilbert
- 88, Promenade



Disclaimer: The data presented has been compiled from various sources, each of which introduces varying degrees of inaccuracies or inconsistencies. Such discrepancies in data are inherent and in supplying this product to the public the Town of Castle Rock assumes no liability for its use or accuracy. For questions or comments regarding omissions, corrections, or updates please visit CRgov.com/directory for contact information.
Copyright 2017, Town of Castle Rock
Coordinate System: SPCS Colorado Central (0502)
Projection: Lambert Conformal Conic
Datum: North American 1983
Units: Foot US
Creation Date: 5/5/2017



Monthly Sales Tax Comparisons

December 2017	December 2018	% Change Month
\$ 5,426,023	\$ 5,521,507	1.8%
2017	2018	% Change
\$ 46,285,255	\$ 48,822,516	5.5%



Monthly Sales Tax Comparisons - By Industry

Category	December 2017	December 2018	% Change Month	% Total Month
Food and General Merchandise	\$ 1,702,895	\$ 1,832,531	7.6%	33.2%
Apparel and Accessories	1,022,952	978,157	-4.4%	17.7%
Restaurants & Bars	473,084	509,769	7.8%	9.2%
Misc Retail	637,554	695,112	9.0%	12.6%
Home and Garden	243,350	241,040	-0.9%	4.4%
Utilities	187,706	211,187	12.5%	3.8%
Auto and Auto Items	211,868	176,016	-16.9%	3.2%
Communication	169,675	140,412	-17.2%	2.5%
Furniture and Home Décor	127,648	149,323	17.0%	2.7%
Leasing and Rentals	161,706	152,220	-5.9%	2.8%
Services	159,118	158,933	-0.1%	2.9%
Agricultural and Construction	108,714	99,910	-8.1%	1.8%
Wholesale and Manufacturing	142,187	99,744	-29.9%	1.8%
Ranch Supply/Pet Needs	51,092	54,630	6.9%	1.0%
Audit Revenue	5,143	-	-100.0%	0.0%
Hotel	21,331	22,523	5.6%	0.4%

Category	2017	2018	% Change	% Total
Food and General Merchandise	\$ 12,955,137	\$ 14,203,857	9.6%	29.1%
Apparel and Accessories	8,166,862	8,435,463	3.3%	17.3%
Restaurants & Bars	5,287,418	5,680,158	7.4%	11.6%
Misc Retail	4,428,611	4,653,150	5.1%	9.5%
Home and Garden	3,310,234	3,442,957	4.0%	7.1%
Utilities	2,108,077	2,255,969	7.0%	4.6%
Auto and Auto Items	2,177,817	2,150,952	-1.2%	4.4%
Communication	1,421,030	1,442,150	1.5%	3.0%
Furniture and Home Décor	1,338,293	1,383,496	3.4%	2.8%
Leasing and Rentals	937,956	1,073,428	14.4%	2.2%
Services	1,024,959	976,254	-4.8%	2.0%
Agricultural and Construction	882,842	926,840	5.0%	1.9%
Wholesale and Manufacturing	902,876	766,160	-15.1%	1.6%
Ranch Supply/Pet Needs	492,278	505,377	2.7%	1.0%
Audit Revenue	399,172	482,950	21.0%	1.0%
Hotel	451,692	443,355	-1.8%	0.9%

* YTD break out does not include prior year collections