

CASTLE ROCK WATER

**RESOLUTION – CONSTRUCTION CONTRACT
BETWEEN TOWN OF CASTLE ROCK AND
GARNEY COMPANIES INC. FOR RWRWTC AND
BMR LAS CONVERSION PROJECT –
WORK PACKAGE 1**

JULY 1, 2025



BACKGROUND AND SCOPE

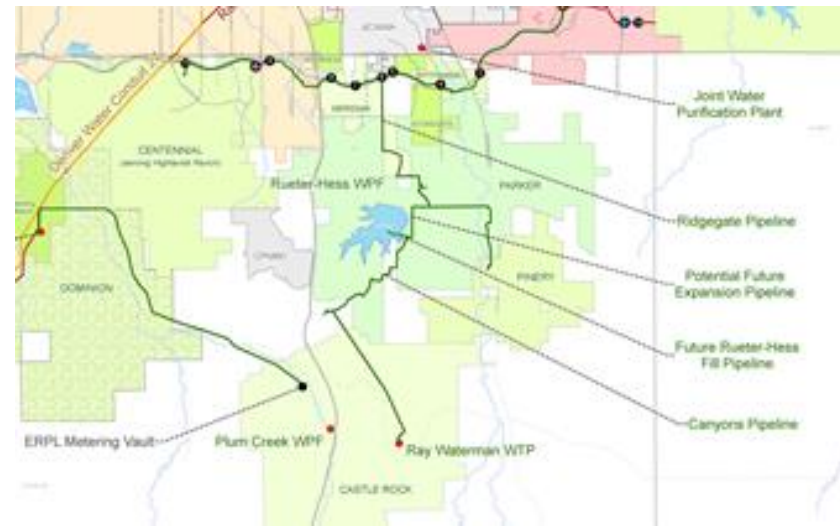
- [illegible]

PROJECT OVERVIEW

SOLE-SOURCE JUSTIFICATION

Project Constraints

- Construction was planned for 2023/2024
 - ✓ Budget concerns and shifting priorities (PCWPF and Founders were both offline) delayed the construction
- Operating facility and must continue to operate except for very short shutdown window.
- WISE Pipeline provides all of TCR's WISE flows, Dominion's WISE flows, and other future imported supplies to RWRWTC
 - ✓ TCR will be receiving higher WISE flows in 2025/26, expect that to continue – align with low demand season
 - ✓ Take-or-pay agreement
 - ✓ November = No WISE Flow Month
 - ✓ WISE Modifications will allow WISE flows to be accepted even when RWRWTC is offline.
 - ✓ Coordinating scope with SCADA Phase V project
- Emergency to complete to minimize fees and prioritize schedule



Garney Companies, Inc.

- Selected twice competitive bid processes
- Experience working CRW operating facilities
- High quality work – on schedule
- Crews available immediately from PCWPF
- Know Town Standards and staff
- Develop schedule - minimize facility shutdown

BMR LAS CONVERSION

BACKGROUND AND SCOPE

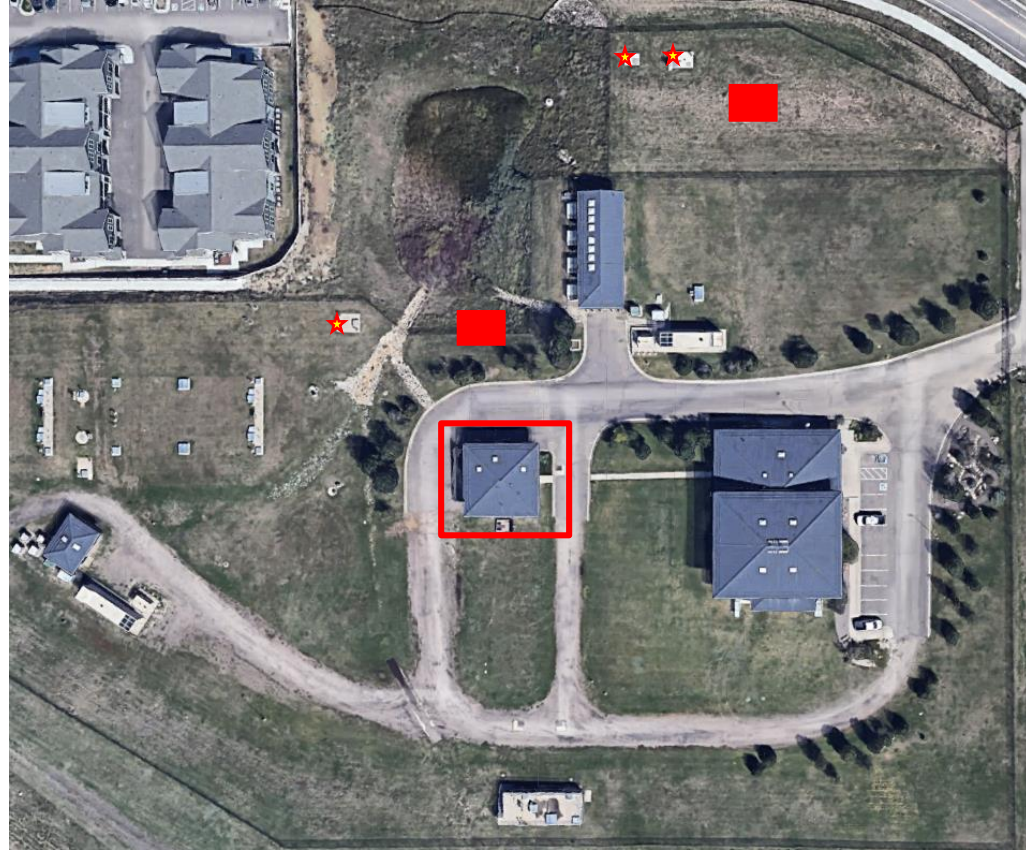
- BMR WTP owned and operated by CRW since 2022.
- Rated capacity of 0.72 million gallons per day (MGD). Serves 321 home Bell Mountain Ranch subdivision.
- Convert from free chlorines to chloramines as disinfectant to align with TCR's water system
 - ✓ Allows water to move between systems
- Addition of LAS chemical feed system.
 - ✓ New chemical storage tanks, chemical feed pumps, chlorine analyzers, PLC panel, clearwell instrumentation, inline static mixer, sample tap/pump at clearwell effluent



RWRWTC LAS CONVERSION

BACKGROUND AND SCOPE

- Rated capacity of 8 MGD. Can accept up to 6 MGD WISE Flows (currently sent through WTP).
- Objectives:
 - ✓ Safety - Convert existing gaseous ammonia chemical system to LAS
 - ✓ Operational flexibility - **TCR will be able to accept WISE flows when RWRWTC is offline**
 - ✓ Redundancy - Provide new connection from red to green zone via Red Zone PRV Vault
 - ✓ Proactively implement SCADA Phase V scope - minimize rework/additional costs



RWRWTC AND BMR LAS CONVERSION

SCHEDULE AND BUDGET

- RWRWTC LAS Conversion
 - ✓ All work during low demand season
 - ✓ Minimize facility shutdowns – maximize accepting WISE Flows
 - ✓ November = No WISE
- BMR LAS Conversion
 - ✓ All work to be completed during low demand season (October – April)
 - ✓ BMR Construction to work around RWRWTC.
 - ✓ BMR fed by TCR distribution system during construction.
- Contract:
 - ✓ Work Package 1 (Long Lead Equipment)– July 1 Town Council
 - ✓ Work Package 2 (Construction) – August 19 Town Council

Project Components	Budget
LAS & WISE Modifications at RWRWTC	\$1,600,000
BMR LAS Conversion	\$500,000
SCADA System Improvements	\$1,150,000
Total	\$3,250,000
Work Package 1	\$1,199,662
Contingency	\$119,966
Total Authorization	\$1,319,628

RWRWTC AND BMR LAS CONVERSION

RECOMMENDATIONS

- Castle Rock Water Commission
- Staff



- PROPOSED MOTION:

- *"I move to approve the Resolution 2025-312 as introduced by title."*

- ALTERNATIVE MOTIONS:

- *"I move to approve the Resolution as introduced by title, with the following conditions: (list conditions)."*
- *"I move to continue this item to the Town Council meeting on ____ date to allow additional time to (list information needed)."*