

CASTLE ROCK WATER

RESOLUTION APPROVING FUNDING THE EXECUTION OF THE WATER PROVIDER AGREEMENT AMENDMENT NO. 7 BETWEEN THE TOWN OF CASTLE ROCK AND COLORADO WATER CONSERVATION BOARD FOR THE PURCHASE OF ADDITIONAL STORAGE SPACE IN THE CHATFIELD REALLOCATION PROJECT

JUNE 2, 2026



CHATFIELD

BACKGROUND

- Project: Reallocate 20,600 Acre Feet (AF) for Storage
- Castle Rock Participation:
 - Approved by Town Council June 17, 2014
 - Approved Modified Agreement Nov 9, 2018
 - Planned purchase of 2,000 AF of storage
 - Purchased 848 AF of storage to date
 - Required to purchase 1,152 AF remaining
- Town's Planned Investment: \$16.6 million (\$8,301/AF)
- Town's Current Investment: \$6.89 million



CHATFIELD

CWCB AGREEMENT TERMS

- Option Agreement has five purchase deferments – last deferment used in 2025
- Nine more storage blocks to be purchased (2026 – 2034) at ~\$1 million each
- Total cost remaining with this purchase = \$8.6 million
- Will continue to lease unpurchased Optioned Space to store water for \$50/AF per year from CWCB



Stands of Cottonwood trees along the Plum Creek arm of Chatfield

CHATFIELD

BENEFITS

Statewide project support and Front Range water provider cooperation

Storage

- Capture free river flows / reuse water
- Capacity in basins where water rights reside
- Utilize existing water storage rights (senior & junior)

Potential Opportunities

- Lease storage at attractive prices
- Build infrastructure via partnerships
- Expand utilization of Ravenna pipeline
- Improve water quality

Flexibility

- Use and trade imported supplies
- Purchase spot water from Denver and others
- Exchange with Rueter-Hess Reservoir
- Trade with agricultural partners



South Platte River just upstream of Chatfield

CHATFIELD

BUDGET

- 2026 Option Shares of 129 AF
 - \$1,070,825.13
- Account 211-4375-443.77-29
Chatfield Reallocation
 - 2026 Budget of \$1,097,595

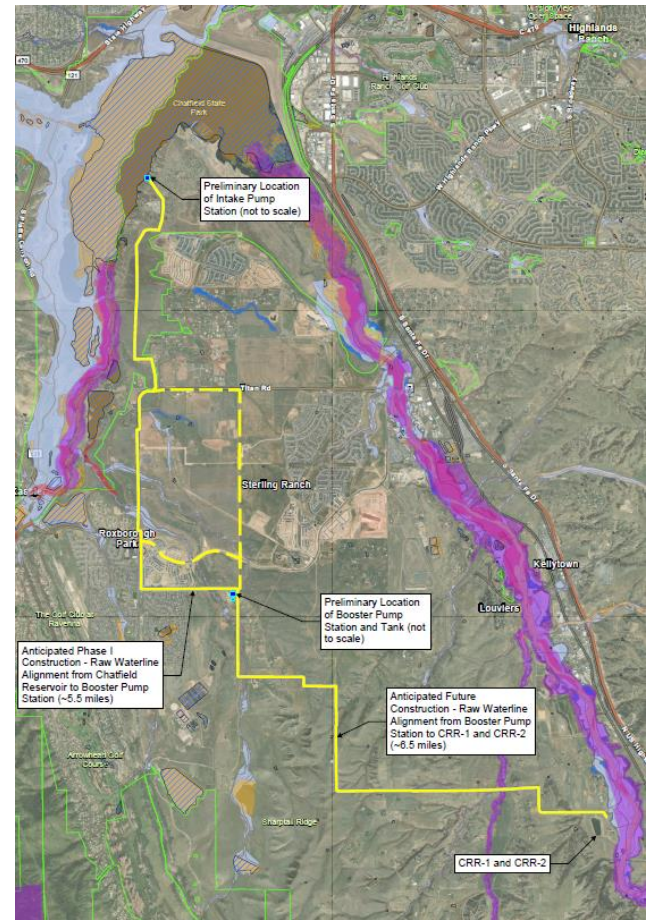


Reconstructed North Boat Ramp area

CHATFIELD

CHATFIELD PUMP BACK PROJECT

- Will provide direct access to our storage pool
- 20% Design:
 - Intake Pump Station
 - Booster Pump Station
 - 12 miles of pipeline
- Current progress:
 - Booster station property acquisition
 - USACE permitting requirements
- Current cost estimated between \$85-170M
- Current schedule is early 2030s



Potential pipeline routes for Chatfield Pump Back Project

CHATFIELD

RECOMMENDATIONS

- Water Commission
- Staff

Questions?





*“I MOVE TO APPROVE RESOLUTION NO. 2026-068
AS INTRODUCED BY TITLE”*

ALTERNATIVE MOTIONS

*“I MOVE TO APPROVE THE RESOLUTION AS INTRODUCED BY TITLE,
WITH THE FOLLOWING CONDITIONS: _____”*

*“I MOVE TO CONTINUE THIS ITEM TO THE TOWN COUNCIL MEETING
ON _____ DATE TO ALLOW ADDITIONAL TIME TO: _____”*