

CASTLE ROCK WATER

RESOLUTION – CONSTRUCTION CONTRACT WITH GLOBAL UNDERGROUND CORPORATION FOR THE RED HAWK REUSE PIPELINE

APRIL 2, 2019



RED HAWK REUSE PIPELINE

PROJECT BACKGROUND

- Red Hawk Ridge Golf Course is very Water efficient compared to nearby courses.
- Even with its water efficiencies, Red Hawk Ridge Golf Course peak demand = 600,000+ gallons per day
- Peak demand can exceed dedicated deep well supply by 200,000 gallons per day
- Can require supplemental water from municipal raw and potable systems
- Reclaimed water at Plum Creek Water Reclamation Authority (PCWRA) already supplies 3 other golf courses



RED HAWK REUSE PIPELINE

PROJECT OVERVIEW

- Objectives:

- Deliver 650,000 gallons per day reclaimed water
- Available mid-summer 2019
- Minimize costs for delivery of reclaimed water

- Benefits:

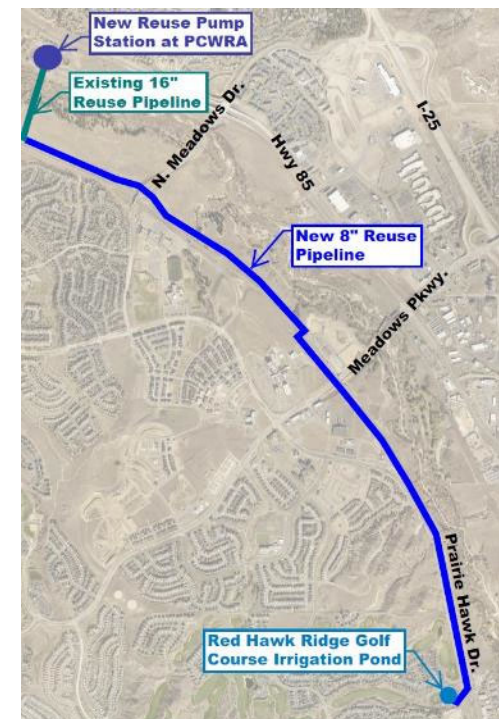
- Maximize reuse water rights
- Reduce demands on municipal water system
- Supply sustainable irrigation water for golf course
- Supply additional nutrients for turf
- Reduce pumping costs for irrigation water
- Increase community familiarity with reuse
- Additional deep groundwater supply



RED HAWK REUSE PIPELINE

PROJECT INFRASTRUCTURE

- New Reuse Pump Station at PCWRA:
 - Design (Burns & McDonnell) and construction (Moltz) is underway in conjunction with PCWRA 3 MGD Expansion Project
- New Reuse Pipeline from PCWRA to Red Hawk Ridge Golf Course:
 - 3 miles of new 8" pipeline
 - RFP issued - open trench construction services - 5 proposals received – Global Underground lowest at \$1,040,654
 - Trenchless crossings sole source with Global - \$382,980
 - Town pre-purchased some pipe to accelerate schedule



RED HAWK REUSE PIPELINE

PROJECT COSTS

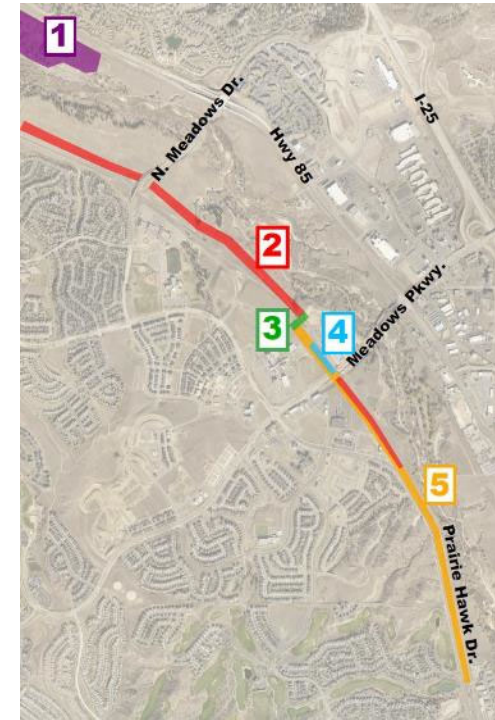
Reuse Pipeline Construction Services (Open Trench)	Global Underground	\$998,334
Reuse Pipeline Construction Services (Trenchless Crossings)	Global Underground	\$382,980
Contingency	Town-managed	\$207,200
	Current Authorization Request:	\$1,588,514
Previous Authorizations		
Pipe Material Pre-Purchase	Global Underground	\$83,617
PCWRA Reuse Pump Station Design	Burns & McDonnell Engineering	\$43,000
PCWRA Reuse Pump Station Construction	Moltz Construction	\$175,000
	Total Previous Authorizations:	\$301,617



RED HAWK REUSE PIPELINE

PROJECT COORDINATION

1. PCWRA 3 MGD Expansion construction
2. Easement acquisition from Castle Rock Development Company
3. Permitting and license for Burlington Northern Santa Fe Railroad crossing
4. Easement acquisition from Porter Adventist Health System
5. IREA transmission line easement colocation and infrastructure accommodations
6. CDPHE permit for reuse application



RED HAWK REUSE PIPELINE

RECOMMENDATIONS

- Castle Rock Water Commission
- Staff

Questions?





THANK YOU

Recommended Motion: *"I move to approve Resolution 2019-039 as introduced by title"*