



BELLA MESA POND RELOCATION TOWN COUNCIL MEETING TUESDAY, APRIL 19, 2022



PROJECT TEAM:

HISTORY

APPLICANT

JOHN V. HILL

FOURTH INVESTMENTS
USA, LLC

ENGINEER

EVAN RUMNEY, P.E.

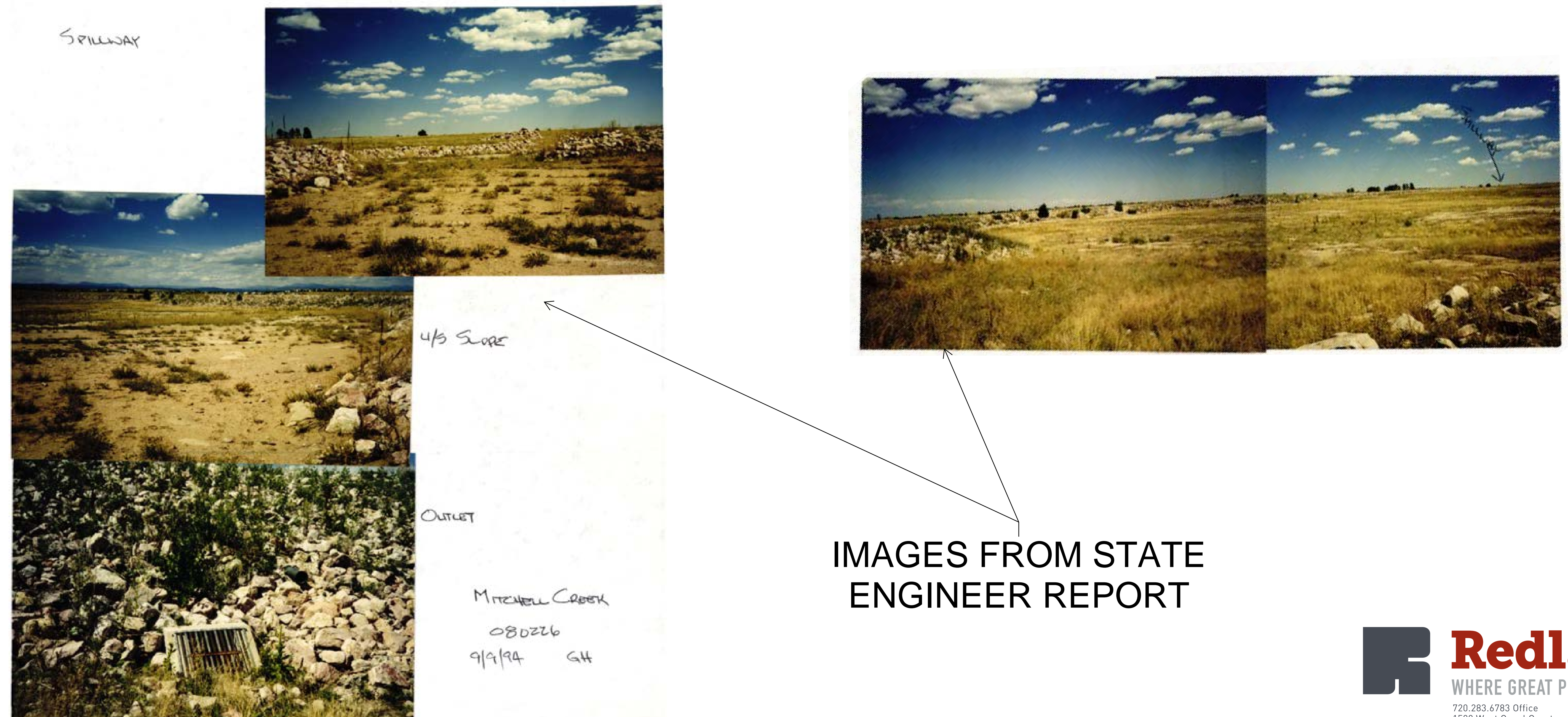
REDLAND

-IN 1986, A DAM WAS DESIGNED AND CONSTRUCTED TO CREATE A WASTEWATER TREATMENT POND FOR THE VILLAGES AT CASTLE ROCK METRO DISTRICT NO. 4.

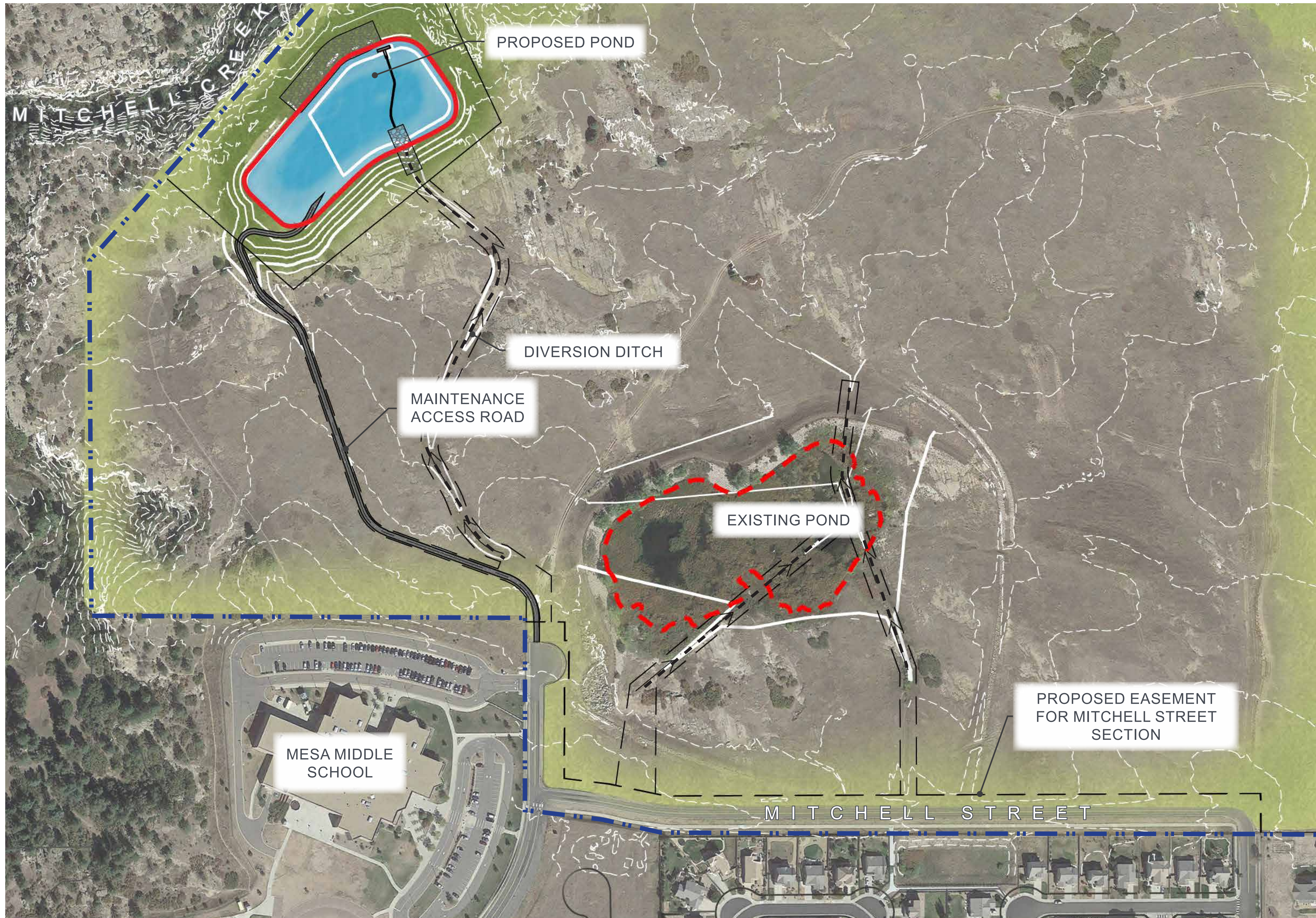
-IN 1994, THE OFFICE OF THE STATE ENGINEER - DIVISION OF WATER RESOURCES - DAM SAFETY BRANCH CONDUCTED AN INSPECTION AND DETERMINED IN THE REPORT THE DAM WAS NON-JURISDICTIONAL IN SIZE, OFF-STREAM, AND WAS CONSIDERED ABANDONED.

-AT SOME POINT AFTER THE STATE ENGINEER INSPECTION, AN OUTLET STRUCTURE WAS CONSTRUCTED TO CONVERT THE WASTEWATER TREATMENT POND INTO A DETENTION POND.



- THE POND CURRENTLY SERVES AS DETENTION AND WATER QUALITY FOR MESA MIDDLE SCHOOL.



BELLA MESA - POND RELOCATION SITE PLAN



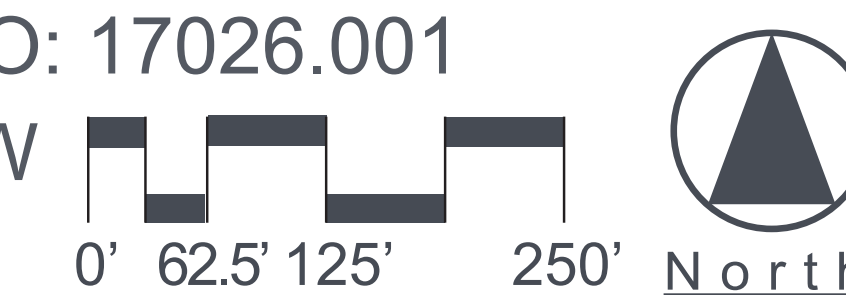
LEGEND

-  PROPERTY LINE
-  EXISTING POND
-  PROPOSED POND
-  DIVERSION DITCH
-  POND
-  DETENTION SEED MIX
-  NATIVE SEED MIX

POND RELOCATION EXHIBIT

BELLA MESA POND
CASTLE ROCK, CO.

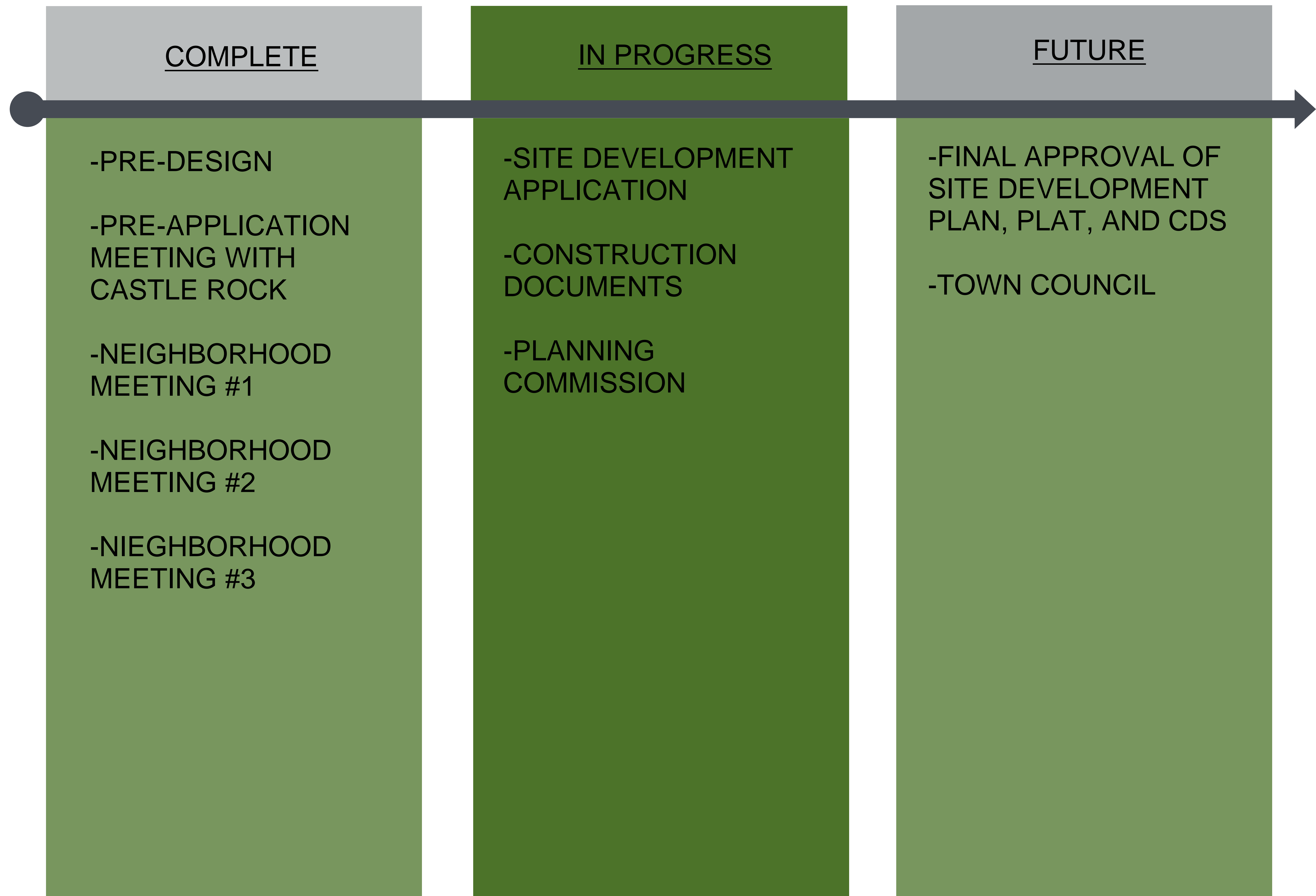
DATE: FEBRUARY 8, 2022 (V.3)
CLIENT: COLORADO LAND
MANAGEMENT LLC
PROJECT NO: 17026.001
AUTHOR: SW




Redland
WHERE GREAT PLACES BEGIN

720.283.6783 Office
1500 West Canal Court
Littleton, Colorado 80120
REDLAND.COM

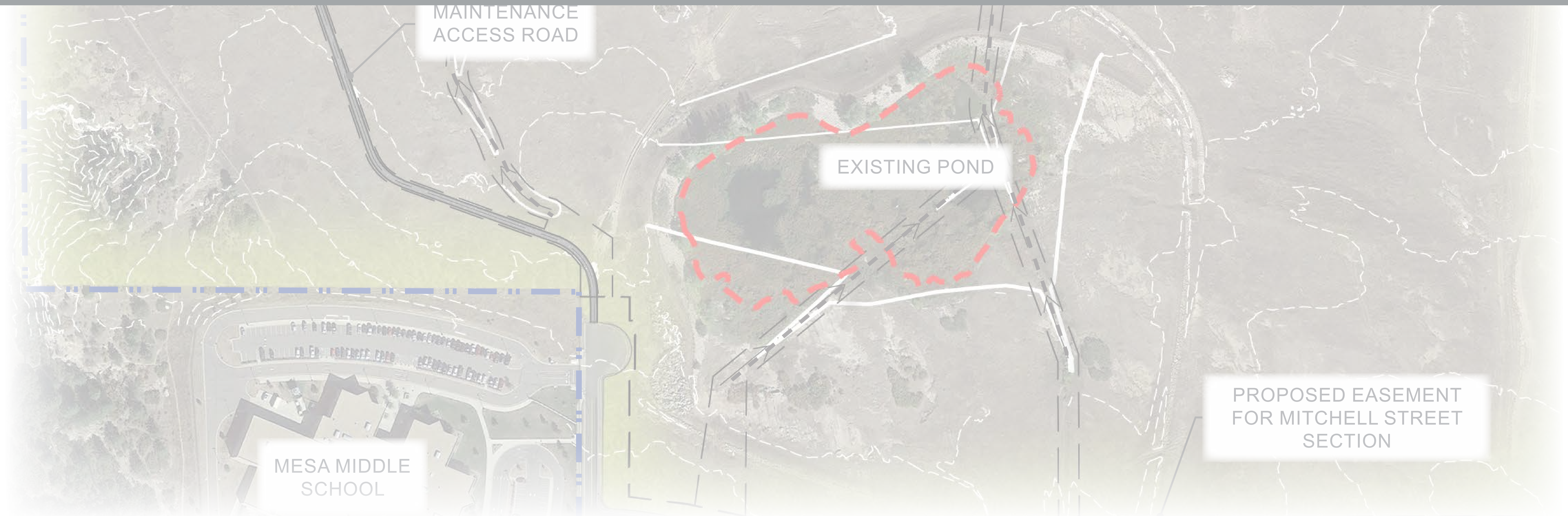
APPLICATION PROCESS





PROPOSED POND

QUESTIONS?



MAINTENANCE
ACCESS ROAD

EXISTING POND

PROPOSED EASEMENT
FOR MITCHELL STREET
SECTION

MESA MIDDLE
SCHOOL