

# HIDDEN MESA

## O P E N S P A C E

CRgov.com/trails • 303-814-7444



### Fast facts about Hidden Mesa Open Space

Trail length	4.5 miles
Trail rating	Moderate
Trail surface	Native surface and paved
Wildlife highlights	Elk, pronghorn, black-tailed prairie dogs and raptors
Special comments	Horseback riding is allowed

**The single-track trail is of moderate difficulty and offers amazing views of Castle Rock and surrounding areas.**

This is a joint venture between Douglas County, the Town of Castle Rock and the Pinery Water and Wastewater District to preserve 1,294 acres of mesa, steep rock cliffs, shady gulches, open grassland and lush, riparian habitat in the Cherry Creek basin.

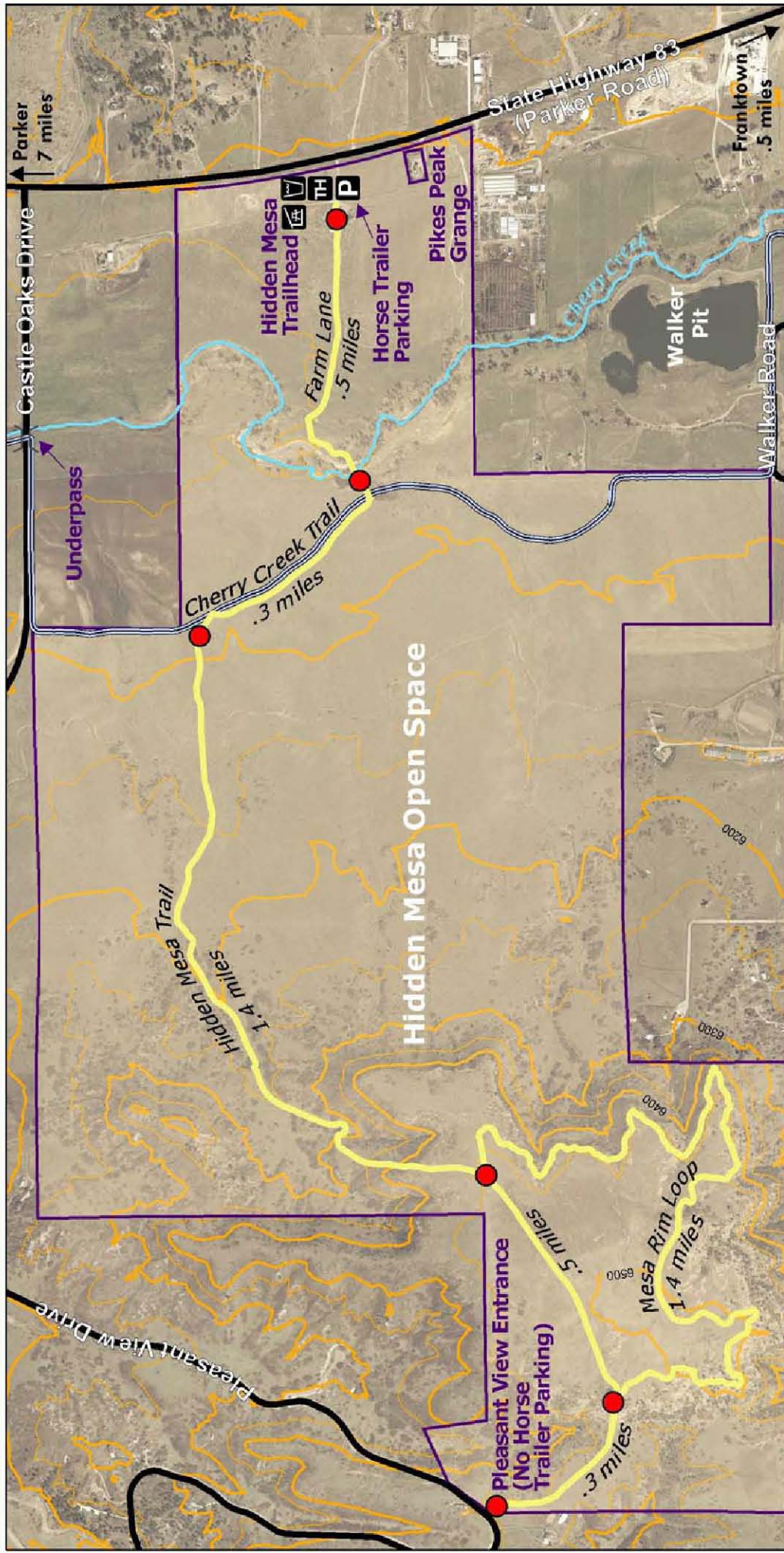
The eastern section connects to the paved Cherry Creek Regional Trail, and the southwestern section eventually will connect to Gateway Mesa Open Space.

The main trailhead parking lot is on the west side of Colorado Highway 83 (Parker Road), 1 mile north of Franktown. Additional parking (no trailers) is available on Pleasantview Drive.

Hidden Mesa is managed by Douglas County Open Space and therefore is not available for adoption through the Town's POST Partners volunteer program.



Not available  
for adoption



## Hidden Mesa Trails

Douglas County Division of Open Space & Natural Resources  
 100 Third Street  
 Castle Rock, CO 80104  
 (303) 660-7495

See Douglas County Open Space Rules and Regulations for a complete set of rules at [www.douglas.co.us](http://www.douglas.co.us)

SOURCE: IMAGERY CAPTURED IN 2004

### Trails are open to

- Dogs on Leash
- Hikers
- Horses
- Mountain Bikers

### Trails are closed to

- All Motorized Vehicles
- Unleashed Pets

### Douglas County Open Space

- Hidden Mesa Trails - Natural surface
- 6.9 miles round trip from the trailhead via Mesa Rim Loop Trail
- Cherry Creek Trail
- Directional Sign Posts
- 100 Foot Contours
- 50 Foot Contours
- Roads
- Parking
- Picnic Shelter
- Trailhead
- Water

