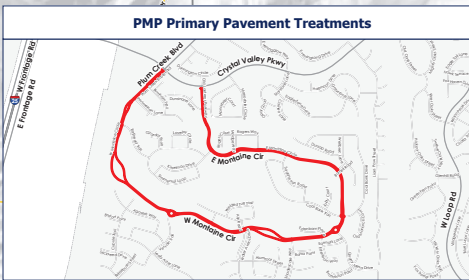
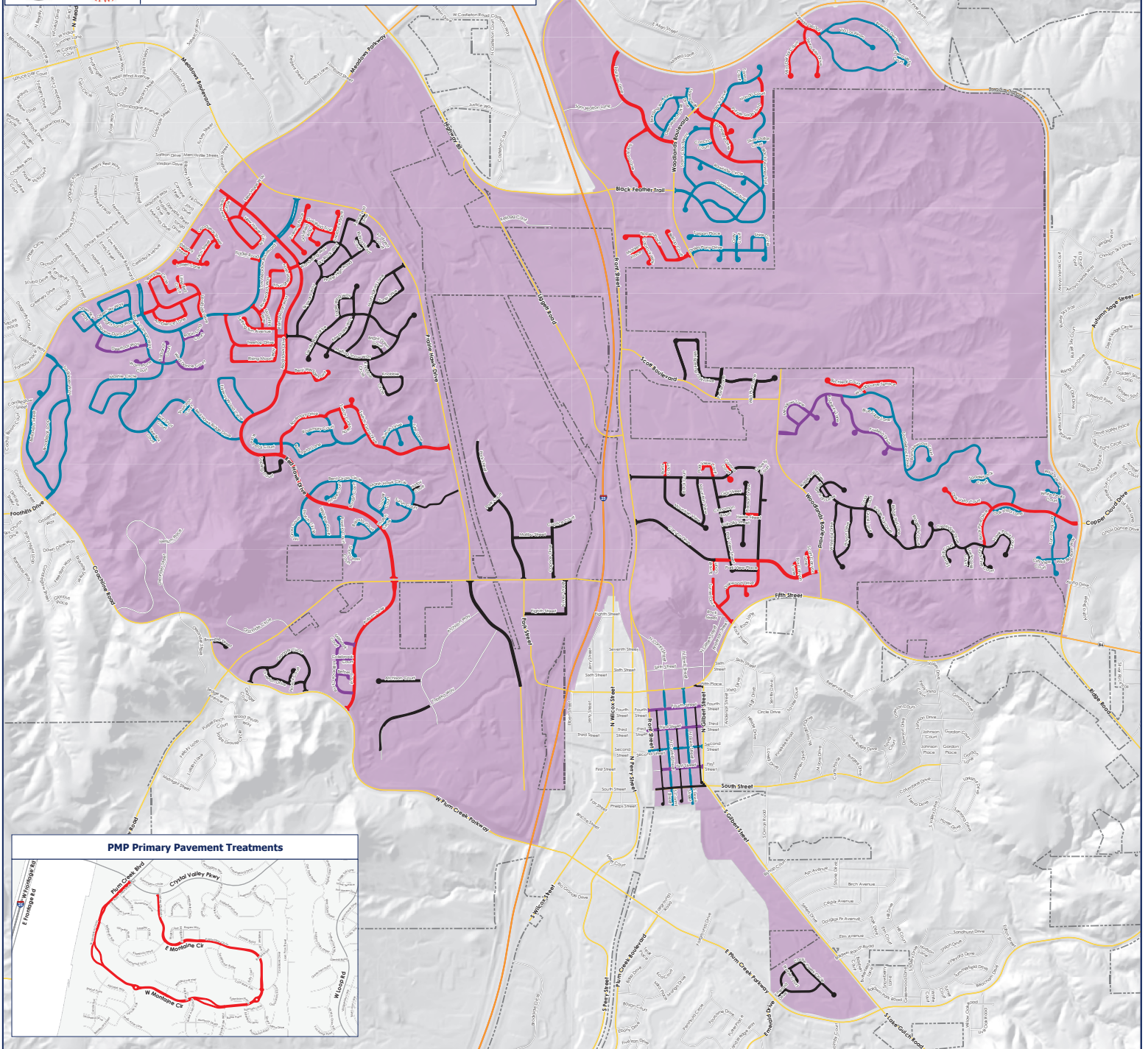




PAVEMENT MAINTENANCE PROGRAM

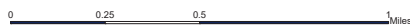
2025 Preliminary Treatment Plan* for Central Region and Primaries- Budget \$16,500,000



Pavement Treatment

- Sin Mill and Overlay 304,729 Sq Yd (34.2 Ln Mi)
- Asphalt Slurry Seal 302,008 Sq Yd (33.8 Ln Mi)
- Roadway Reconstruction 46,721 Sq Yd (5.2 Ln Mi)
- Crack Seal 275,645 Sq Yd (31.4 Ln Mi)

Town Limits
 PMP Central Region (2025)



*This is a preliminary plan and may change prior to implementation in 2025



Map Disclaimer: If you are unable to access any portion of this map due to a disability as defined under Colorado House Bill 21-1110, we are here to help! Please call us at 303.652.4443, email the Town's accessibility team at accessibility@ci.castlerock.co.us or submit an accommodation request form at <https://www.ci.castlerock.co.us/AccessibilityRequestForm>.

This data presented has been compiled from various sources, each of which introduces varying degrees of inaccuracies or inconsistencies. Such discrepancies in data are inherent and in accepting this product to the public the Town of Castle Rock assumes no liability for its use or accuracy. For questions or comments regarding omissions, corrections, or updates please visit <https://www.ci.castlerock.co.us/Information> or contact the GIS Department at 303.652.4443.