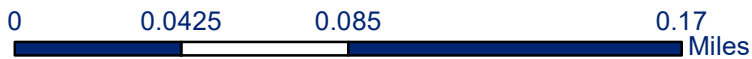
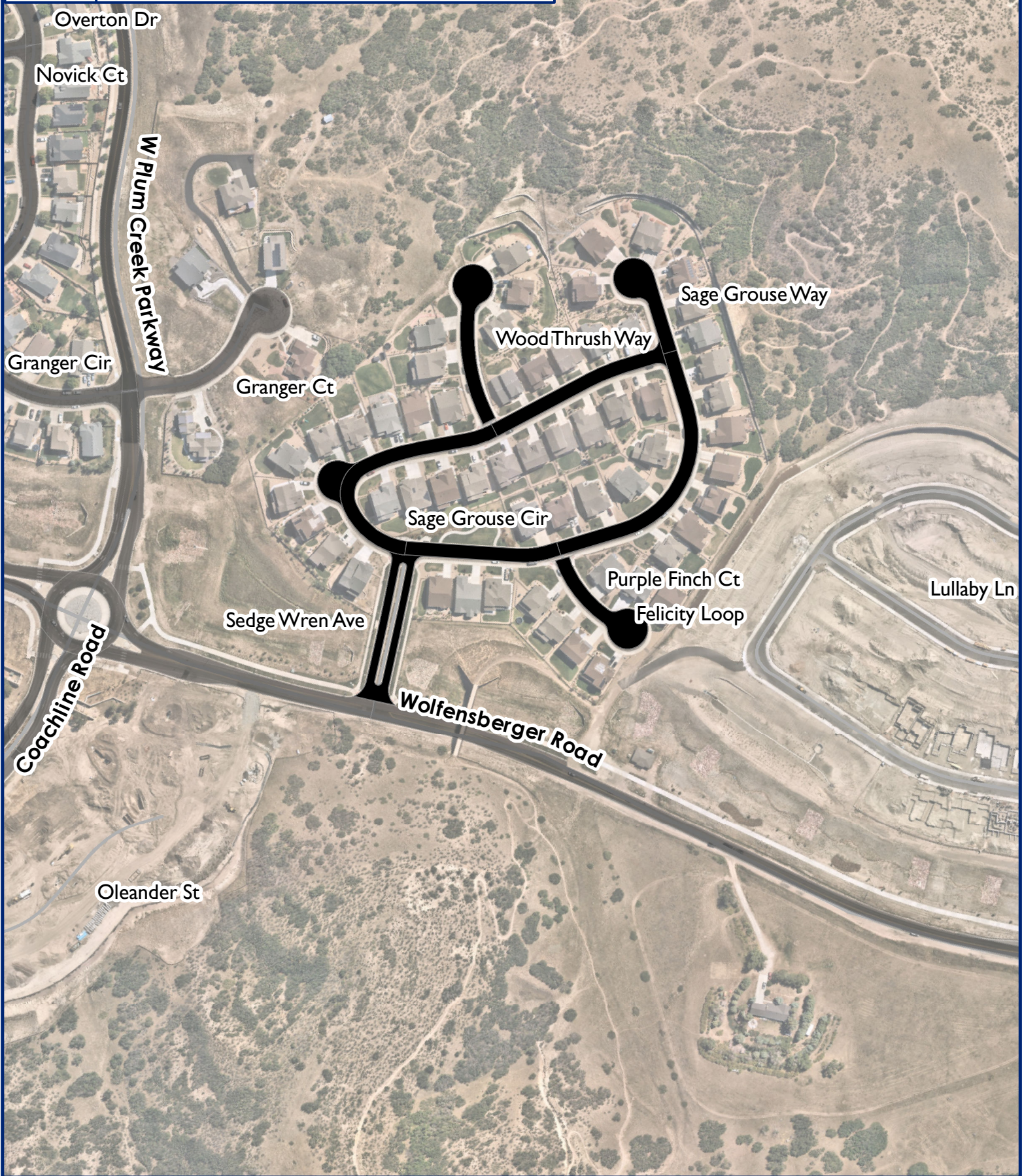




2022 ROADWAY MAINTENANCE

Maintenance Area 1

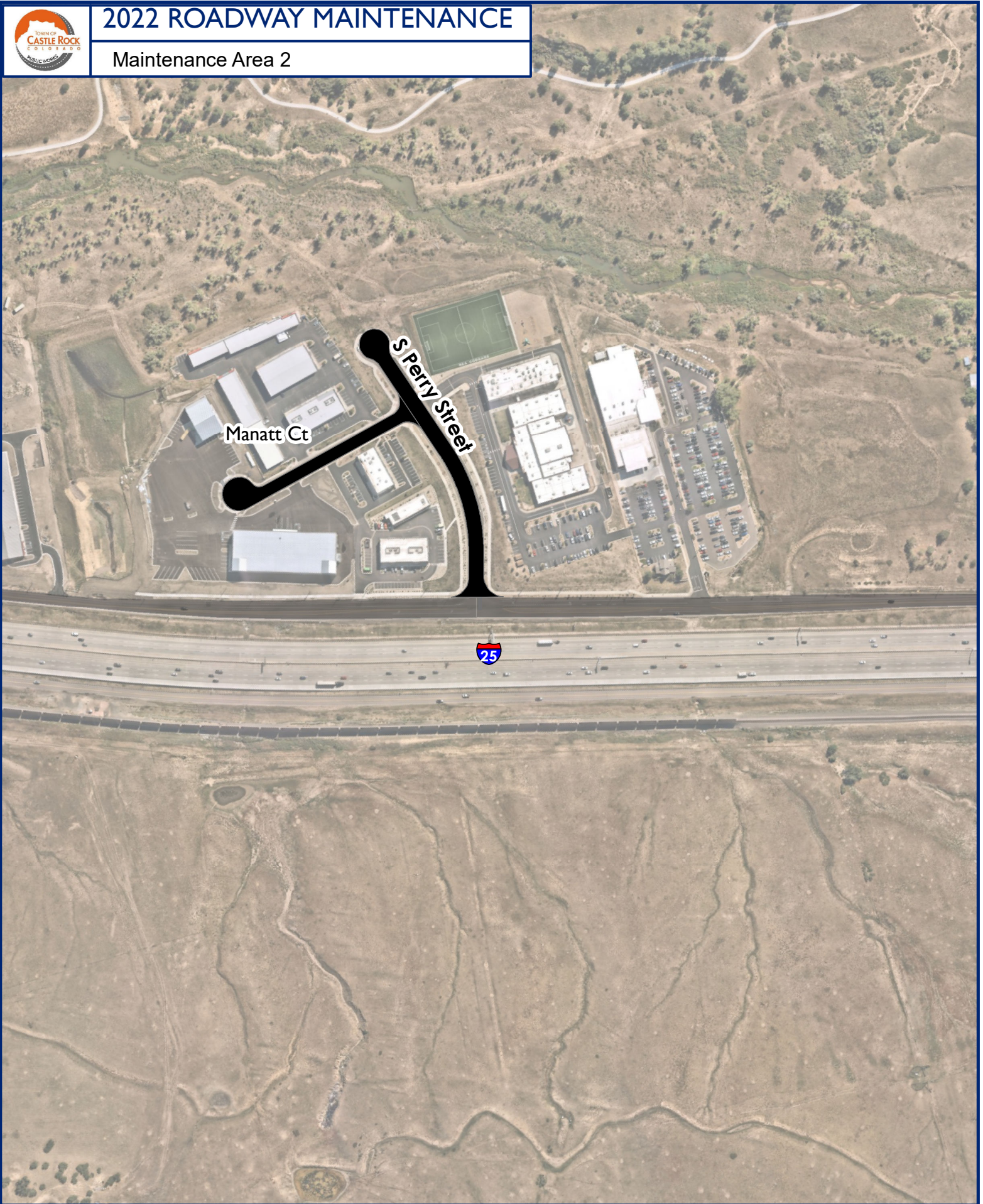


Disclaimer: The data presented has been compiled from various sources, each of which introduces varying degrees of inaccuracies or inconsistencies. Such discrepancies in data are inherent and in supplying this product to the public the Town of Castle Rock assumes no liability for its use or accuracy. For questions or comments regarding omissions, corrections, or updates please visit CRgov.com/directory for contact information.



2022 ROADWAY MAINTENANCE

Maintenance Area 2

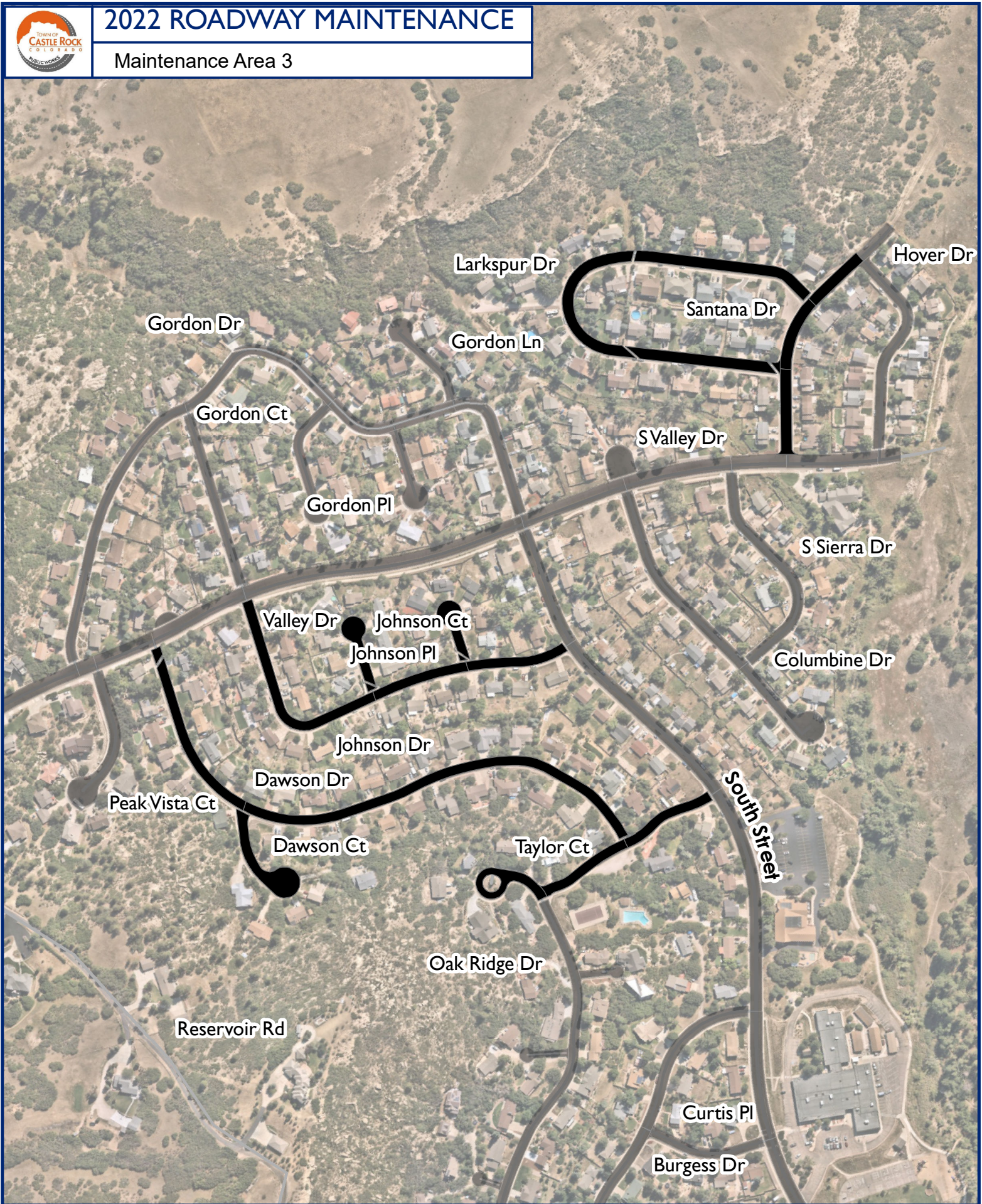


Disclaimer: The data presented has been compiled from various sources, each of which introduces varying degrees of inaccuracies or inconsistencies. Such discrepancies in data are inherent and in supplying this product to the public the Town of Castle Rock assumes no liability for its use or accuracy. For questions or comments regarding omissions, corrections, or updates please visit CRgov.com/directory for contact information.



2022 ROADWAY MAINTENANCE

Maintenance Area 3

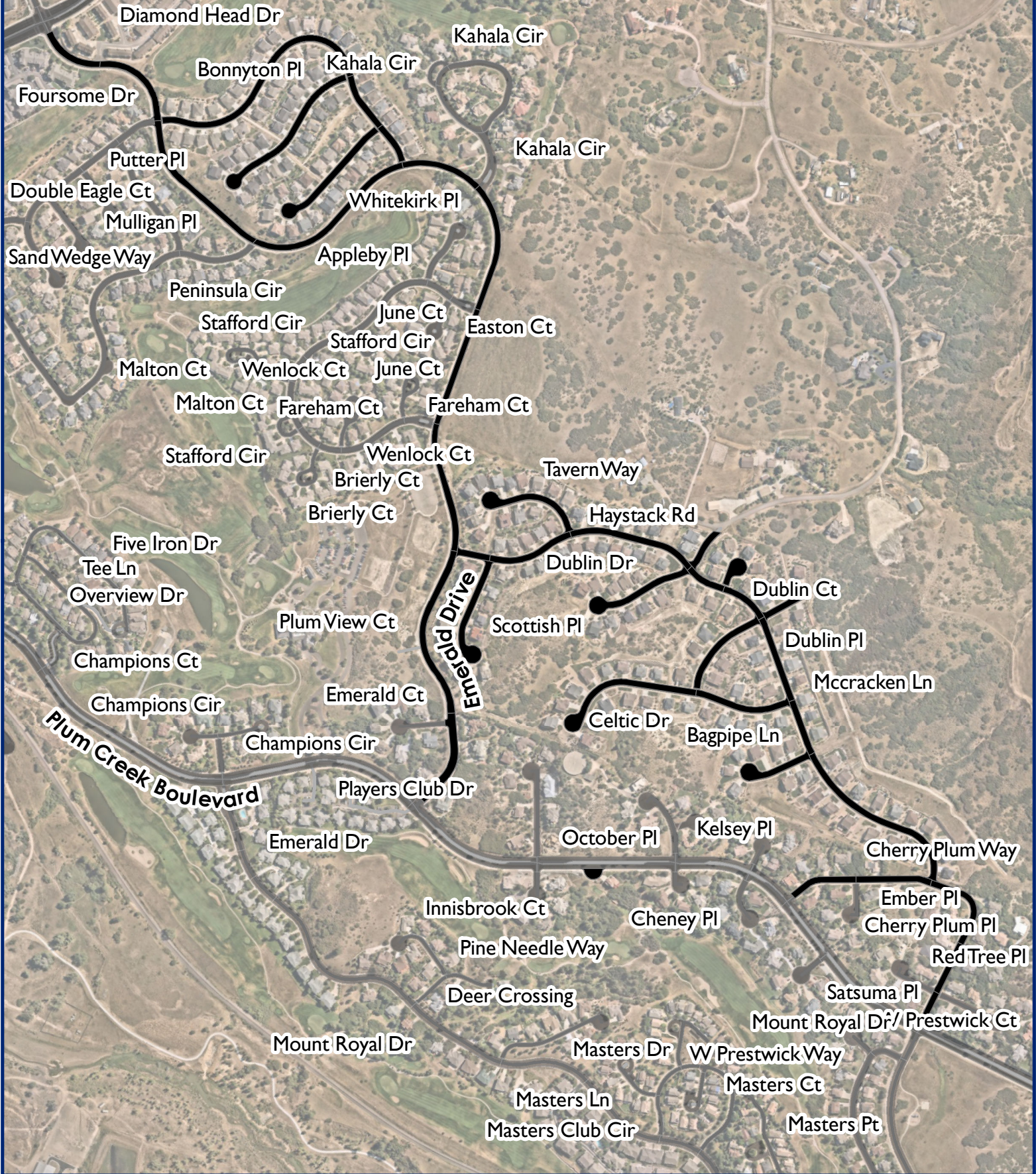


Disclaimer: The data presented has been compiled from various sources, each of which introduces varying degrees of inaccuracies or inconsistencies. Such discrepancies in data are inherent and in supplying this product to the public the Town of Castle Rock assumes no liability for its use or accuracy. For questions or comments regarding omissions, corrections, or updates please visit CRgov.com/directory for contact information.



2022 ROADWAY MAINTENANCE

Maintenance Area 4

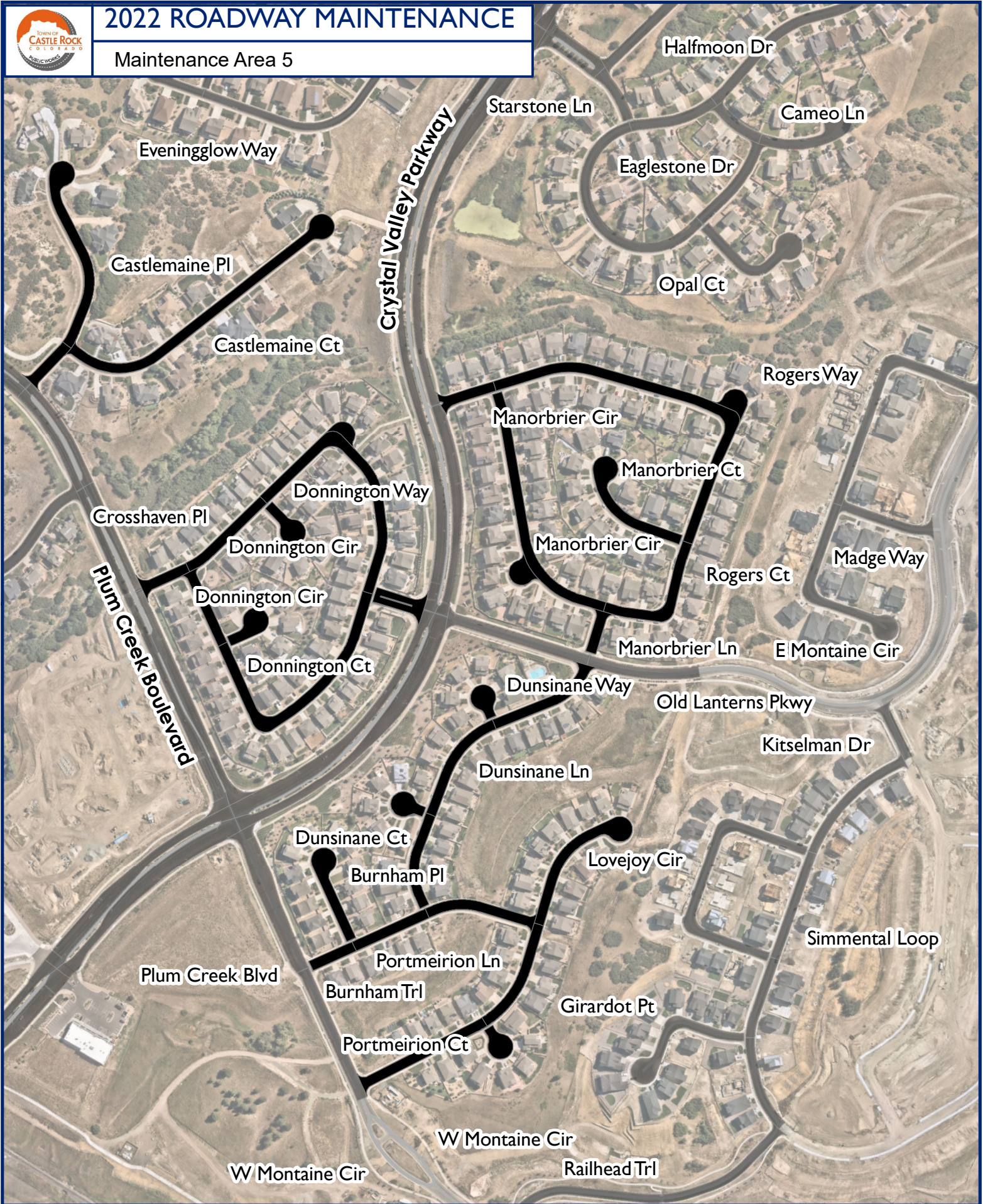


Disclaimer: The data presented has been compiled from various sources, each of which introduces varying degrees of inaccuracies or inconsistencies. Such discrepancies in data are inherent and in supplying this product to the public the Town of Castle Rock assumes no liability for its use or accuracy. For questions or comments regarding omissions, corrections, or updates please visit CRgov.com/directory for contact information.



2022 ROADWAY MAINTENANCE

Maintenance Area 5

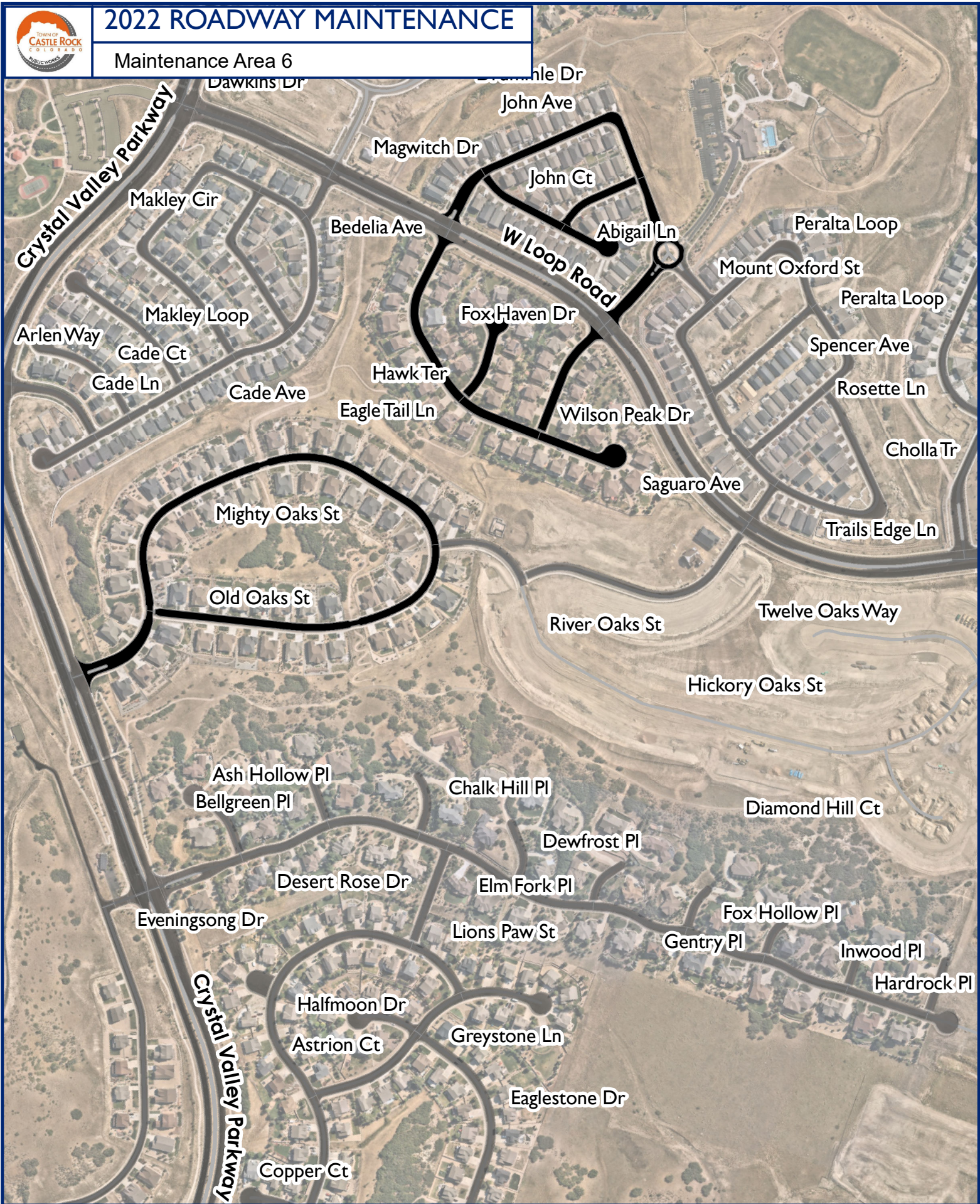


Disclaimer: The data presented has been compiled from various sources, each of which introduces varying degrees of inaccuracies or inconsistencies. Such discrepancies in data are inherent and in supplying this product to the public the Town of Castle Rock assumes no liability for its use or accuracy. For questions or comments regarding omissions, corrections, or updates please visit CRgov.com/directory for contact information.

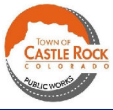


2022 ROADWAY MAINTENANCE

Maintenance Area 6

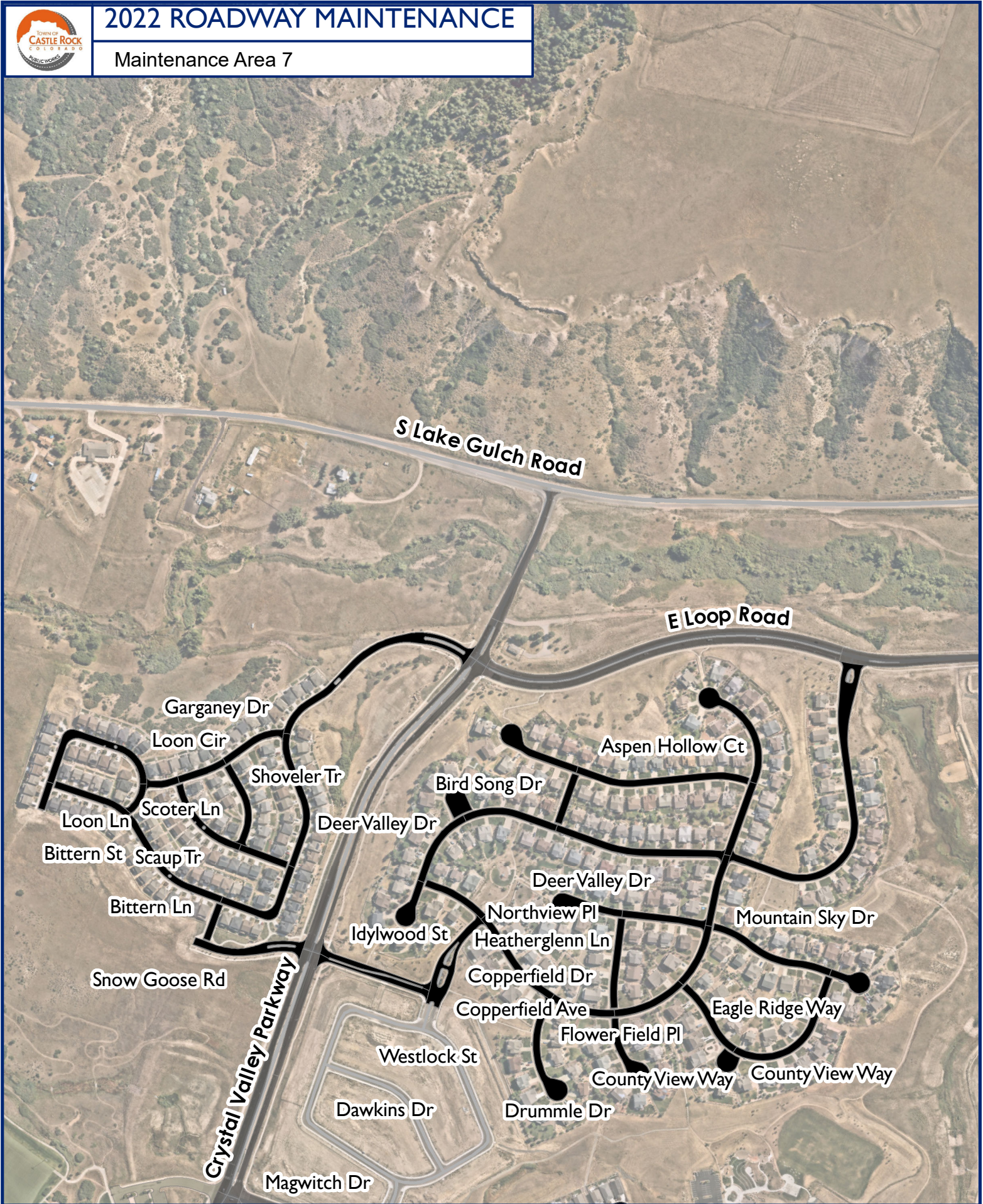


Disclaimer: The data presented has been compiled from various sources, each of which introduces varying degrees of inaccuracies or inconsistencies. Such discrepancies in data are inherent and in supplying this product to the public the Town of Castle Rock assumes no liability for its use or accuracy. For questions or comments regarding omissions, corrections, or updates please visit CRgov.com/directory for contact information.



2022 ROADWAY MAINTENANCE

Maintenance Area 7

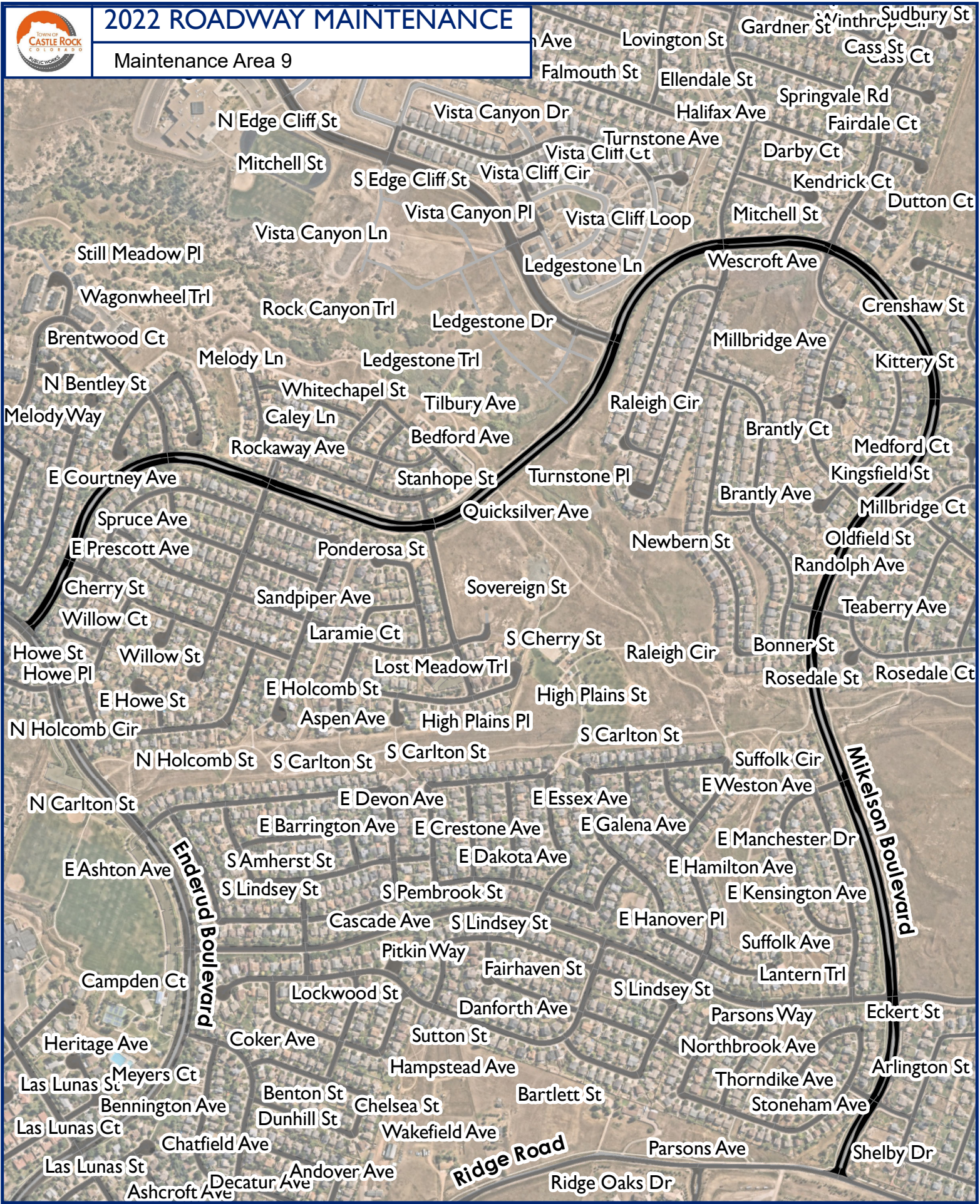


Disclaimer: The data presented has been compiled from various sources, each of which introduces varying degrees of inaccuracies or inconsistencies. Such discrepancies in data are inherent and in supplying this product to the public the Town of Castle Rock assumes no liability for its use or accuracy. For questions or comments regarding omissions, corrections, or updates please visit CRgov.com/directory for contact information.



2022 ROADWAY MAINTENANCE

Maintenance Area 9



Disclaimer: The data presented has been compiled from various sources, each of which introduces varying degrees of inaccuracies or inconsistencies. Such discrepancies in data are inherent and in supplying this product to the public the Town of Castle Rock assumes no liability for its use or accuracy. For questions or comments regarding omissions, corrections, or updates please visit CRgov.com/directory for contact information.