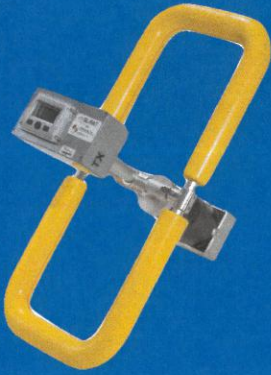


New Technology — Acoustic Inspection

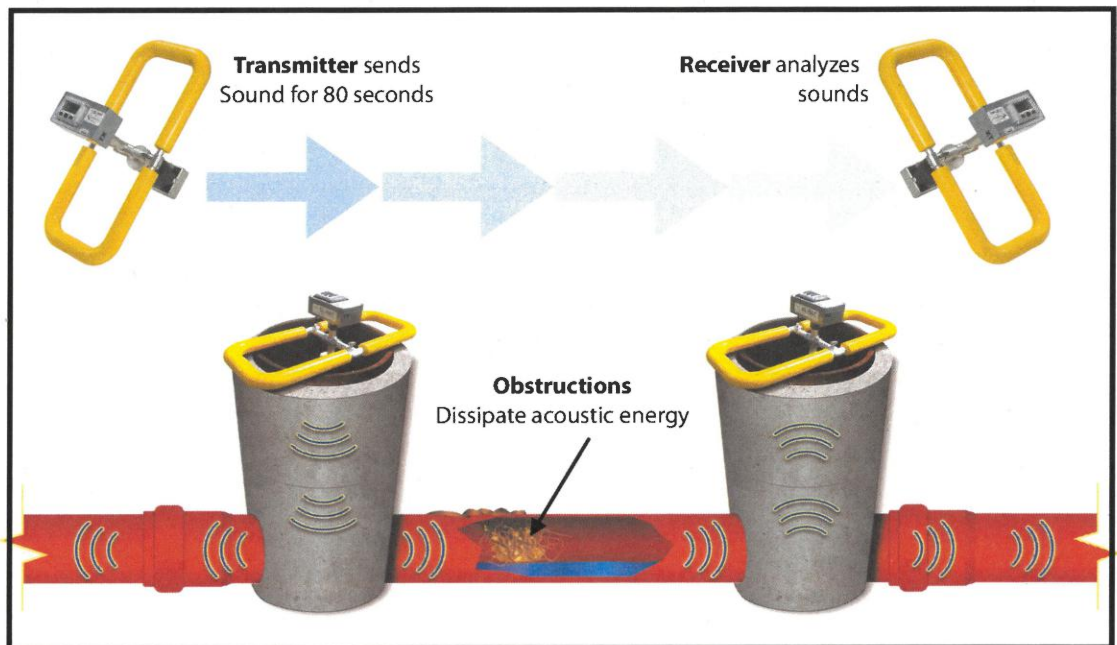


The Sewer Line - Rapid Assessment Tool (SL-RAT)

- Developed by InfoSense in 2008
- Uses acoustics to assess sewer lines
- Recommended by the EPA
- Used by hundreds of utilities worldwide
- Holds ASTM standard for use

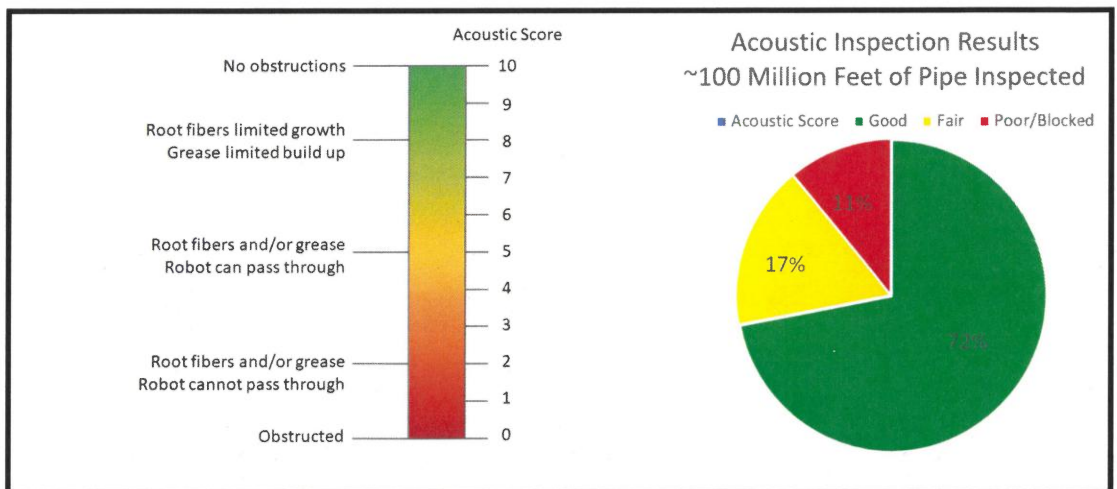
How it works:

The SL-RAT comes in two parts: a transmitter and a receiver that are placed on adjacent manholes. The transmitter sends tones down the pipe and the receiver analyzes those tones for degradation. Based on the quality of the sound, each pipe segment is given a blockage score from 1 to 10.



The Results:

Pipe segments scoring a 6 or above are flowing freely and need no further work. The SL-RAT has been used to inspect over 100 million feet of pipe, and in the average system, 72% were flowing great. That means that more than 72 million feet of pipe did not need to be cleaned.



(385) 228-5350
www.rhborden.com