

SITE DEVELOPMENT PLAN

**AFFINITY AT CASTLE ROCK**

THE MEADOWS FILING NO. 17, AREA NO. 3

A PARCEL LOCATED IN THE SOUTH HALF OF SECTION 27, AND THE NORTH HALF OF SECTION 34,  
TOWNSHIP 7 SOUTH, RANGE 67 WEST OF THE 6TH PRINCIPAL MERIDIAN,  
TOWN OF CASTLE ROCK, DOUGLAS COUNTY, STATE OF COLORADO  
SDP22-0036



HR GREEN - DENVER  
5619 DTC PARKWAY  
SUITE 1150  
DENVER CO 80111  
PHONE: 720.602.4999  
FAX: 844.273.1057

**HRGreen**

**Affinity at Castle Rock**  
**RENDERINGS**

AFFINITY AT CASTLE ROCK  
INLAND GROUP  
CASTLE ROCK, COLORADO

CAD DATE: P:\22052-Inland-Affinity at Castle Rock CO02-Model\22052-Inland-Affinity at Castle Rock RVT  
CAD FILE:

DRAWN BY:  
APPROVED:  
JOB DATE: 11/22/2022  
JOB NO: 22052

SHEET  
**A5.0**


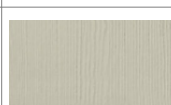

**1**  
OF 1

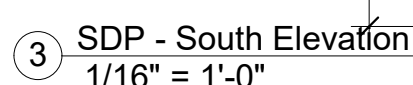
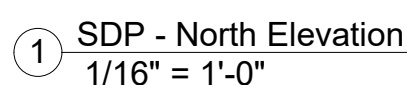
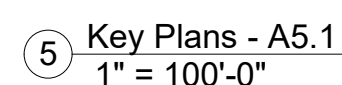
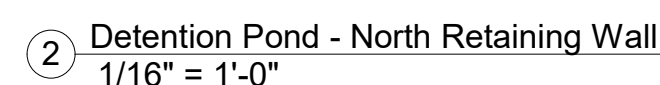
# SITE DEVELOPMENT PLAN

# AFFINITY AT CASTLE ROCK

**A PARCEL LOCATED IN THE SOUTH HALF OF SECTION 27, AND THE NORTH HALF OF SECTION 34,  
TOWNSHIP 7 SOUTH, RANGE 67 WEST OF THE 6TH PRINCIPAL MERIDIAN,  
TOWN OF CASTLE ROCK, DOUGLAS COUNTY, STATE OF COLORADO  
SDP22-0036**

EXTERIOR MATERIALS		
Material Mark	Description	Image
4.1	SPLITFACE 18"x8" CONCRETE BLOCK RETAINING WALL - TAN	
4.2	CULTURED STONE VENEER - PLUMB CREEK	
4.3	CAST IN PLACE CONCRETE WITH VERTICAL/HORIZONTAL REVEALS - PAINTED, COLOR TO COORDINATE WITH CULTURED STONE	
5.1	PREFINISHED ALUM. DECK/RAILING - DARK BRONZE	
7.1	LP ENGINEERED WOOD LAP SIDING - EVENING BLUE	

EXTERIOR MATERIALS		
Material Mark	Description	Image
7.2	LP ENGINEERED WOOD SHAKE SIDING - TIMBER BARK	
7.3	LP ENGINEERED WOOD PANEL SIDING - COBBLESTONE	
7.4	ASPHALT SHINGLES - CERTAINTED LANDMARK - WEATHERED WOOD	
7.5	TRIM - ARCTIC WHITE	
8.0	VINYL WINDOW - WHITE	
8.1	STEEL PANEL GARAGE DOOR - DARK BRONZE	



DATE	BY	NO
------	----	----

HR GREEN - DENVER  
5619 DTC PARKWAY  
SUITE 1150  
DENVER CO 80111  
PHONE: 720.602.4999  
FAX: 844.273.1057

# Affinity at Castle Rock

## EXTERIOR ELEVATIONS

AFFINITY AT CASTLE ROCK  
 INLAND GROUP  
 CASTLE ROCK, COLORADO

As indicated

DRAWN BY: \_\_\_\_\_  
APPROVED: \_\_\_\_\_  
JOB DATE: 11/22/2022  
JOB NO: 22052

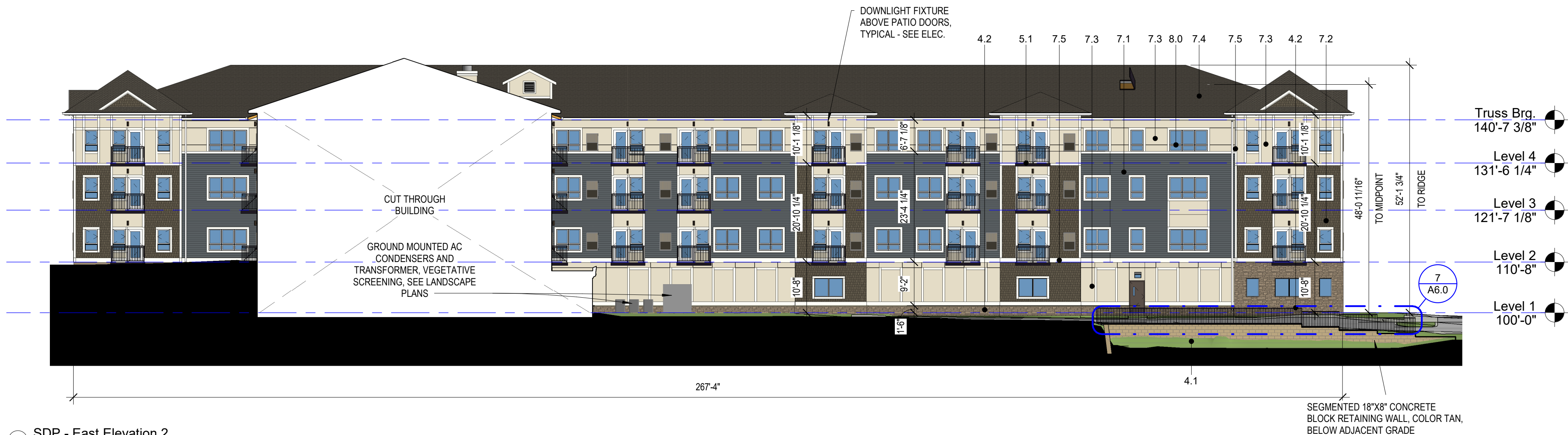
SHEET  
A5.1

27  
OF 35

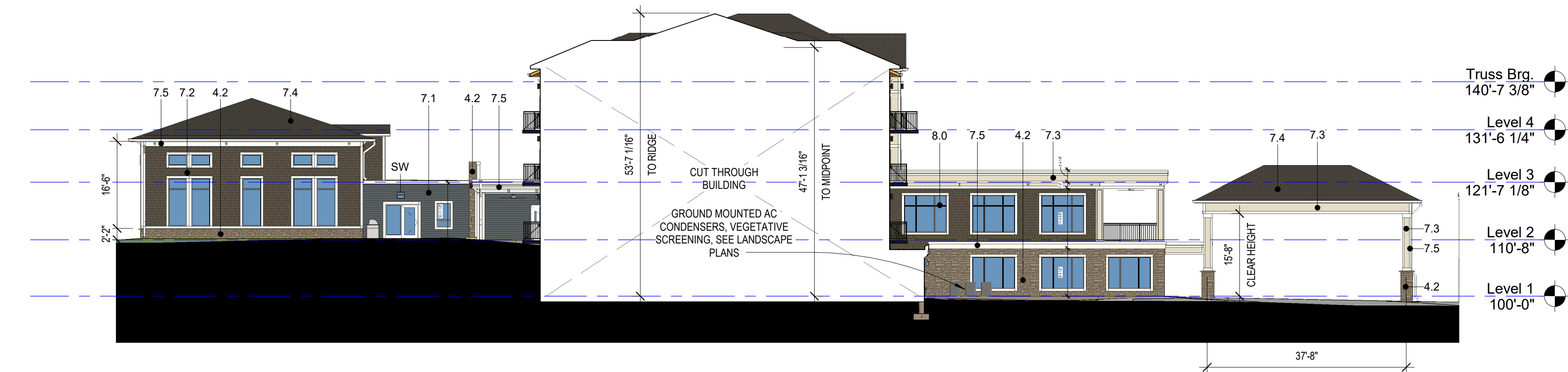
SITE DEVELOPMENT PLAN  
**AFFINITY AT CASTLE ROCK**  
THE MEADOWS FILING NO. 17, AREA NO. 3  
A PARCEL LOCATED IN THE SOUTH HALF OF SECTION 27, AND THE NORTH HALF OF SECTION 34,  
TOWNSHIP 7 SOUTH, RANGE 67 WEST OF THE 6TH PRINCIPAL MERIDIAN,  
TOWN OF CASTLE ROCK, DOUGLAS COUNTY, STATE OF COLORADO  
SDP22-0036



① SDP - East Elevation 1  
1/16" = 1'-0"



② SDP - East Elevation 2  
1/16" = 1'-0"



③ SDP - East Elevation 3  
1/16" = 1'-0"

④ Key Plans - A5.2  
1" = 100'-0"

EXTERIOR MATERIALS		
Material Mark	Description	Image
4.1	SPLITFACE 18"X8" CONCRETE BLOCK RETAINING WALL - TAN	
4.2	CULTURED STONE VENEER - PLUMB CREEK	
4.3	CAST IN PLACE CONCRETE WITH VERTICAL/HORIZONTAL REVEALS - PAINTED, COLOR TO COORDINATE WITH CULTURED STONE	
5.1	PREFINISHED ALUM. DECK/RAILING - DARK BRONZE	
7.1	LP ENGINEERED WOOD LAP SIDING - EVENING BLUE	
7.2	LP ENGINEERED WOOD SHAKE SIDING - TIMBER BARK	
7.3	LP ENGINEERED WOOD PANEL SIDING - COBBLESTONE	
7.4	ASPHALT SHINGLES - CERTAINTED LANDMARK - WEATHERED WOOD	
7.5	TRIM - ARCTIC WHITE	
8.0	VINYL WINDOW - WHITE	
8.1	STEEL PANEL GARAGE DOOR - DARK BRONZE	

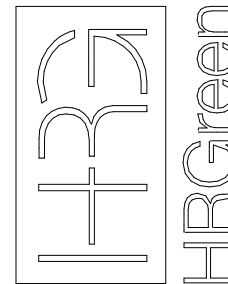
REVISION DESCRIPTION

BY

DATE

NO.

HR GREEN - DENVER  
5619 DTC PARKWAY  
SUITE 1150  
DENVER CO 80111  
PHONE: 720.602.4999  
FAX: 844.273.1057



Affinity at Castle Rock  
EXTERIOR ELEVATIONS

AFFINITY AT CASTLE ROCK  
INLAND GROUP  
CASTLE ROCK, COLORADO

As indicated

DRAWN BY:  
APPROVED:  
JOB DATE: 11/22/2022  
JOB NO: 22052

SHEET  
A5.2

28  
OF 35

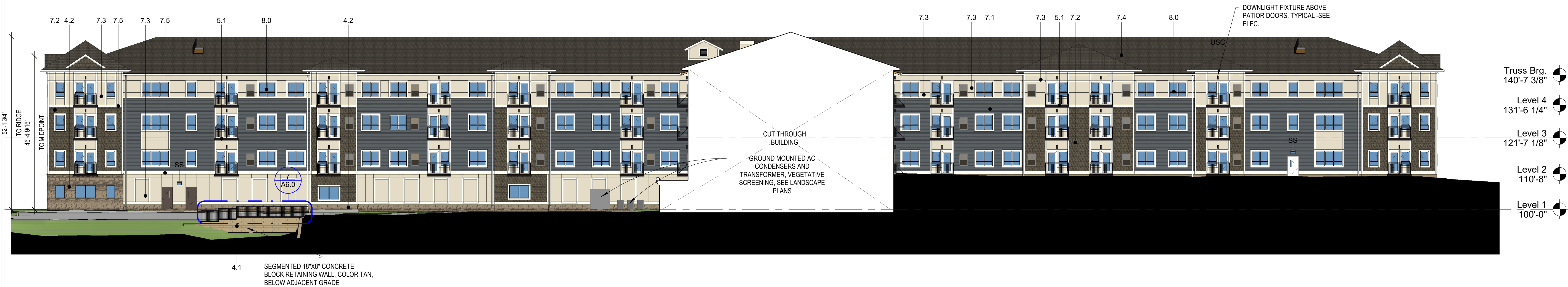
SITE DEVELOPMENT PLAN

# AFFINITY AT CASTLE ROCK

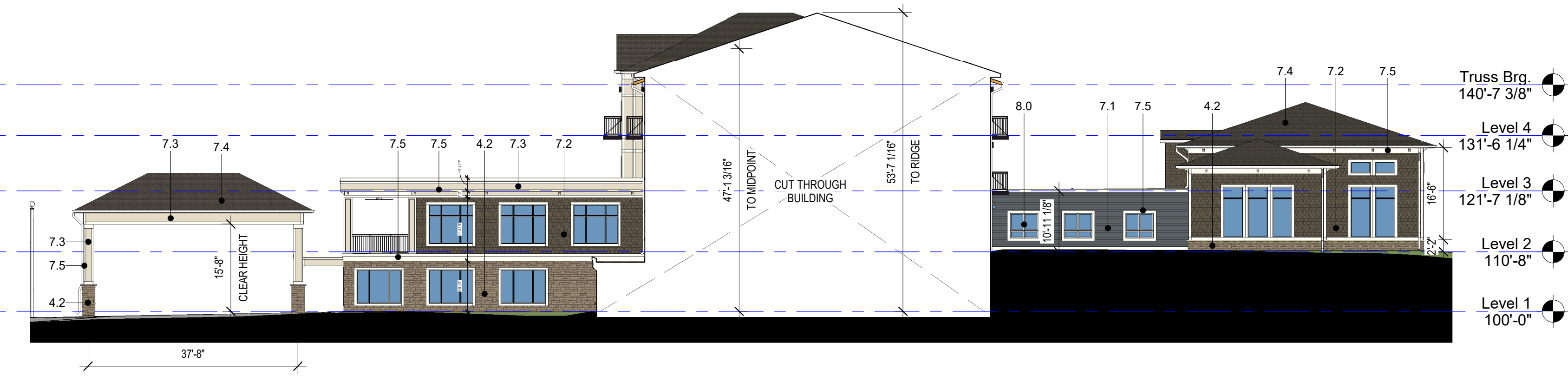
THE MEADOWS FILING NO. 17, AREA NO. 3  
A PARCEL LOCATED IN THE SOUTH HALF OF SECTION 27, AND THE NORTH HALF OF SECTION 34,  
TOWNSHIP 7 SOUTH, RANGE 67 WEST OF THE 6TH PRINCIPAL MERIDIAN,  
TOWN OF CASTLE ROCK, DOUGLAS COUNTY, STATE OF COLORADO  
SDP22-0036



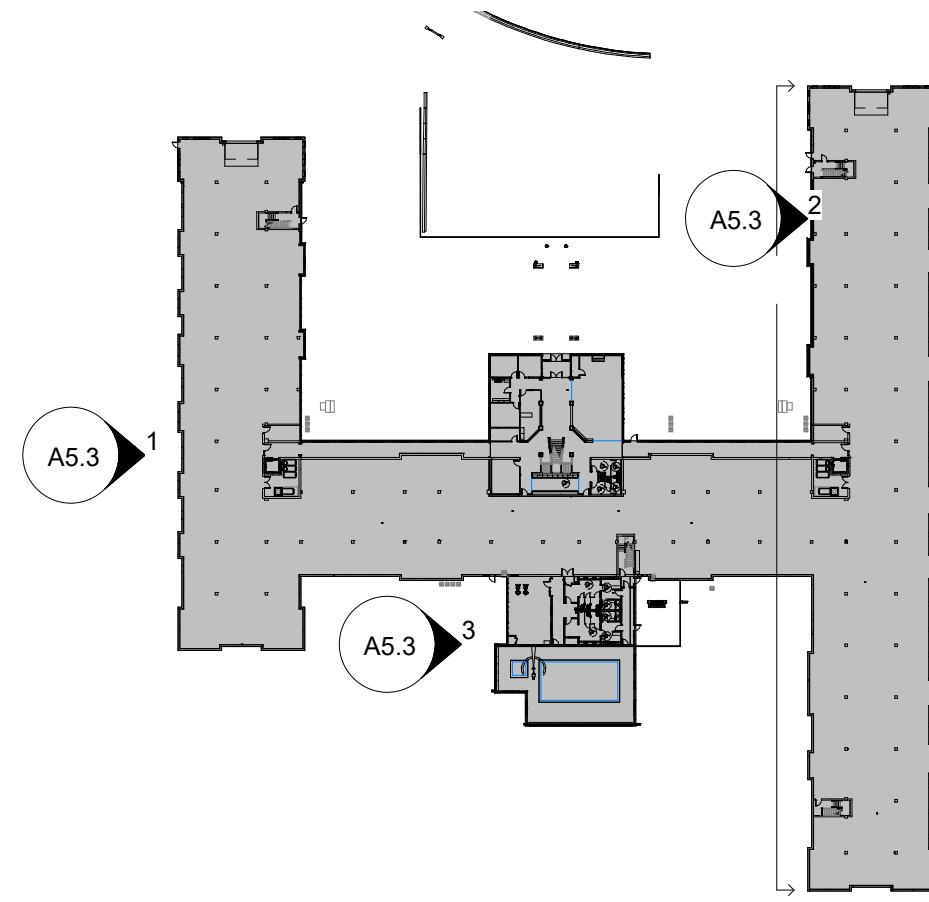
1 SDP - West Elevation 1  
1/16" = 1'-0"



2 SDP - West Elevation 2  
1/16" = 1'-0"



3 SDP - West Elevation 3  
1/16" = 1'-0"



4 Key Plans - A5.3  
1" = 100'-0"

EXTERIOR MATERIALS		
Material Mark	Description	Image
4.1	SPLITFACE 18"X8" CONCRETE BLOCK RETAINING WALL - TAN	
4.2	CULTURED STONE VENEER - PLUMB CREEK	
4.3	CAST IN PLACE CONCRETE WITH VERTICAL/HORIZONTAL REVEALS - PAINTED, COLOR TO COORDINATE WITH CULTURED STONE	
5.1	PREFINISHED ALUM. DECK/RAILING - DARK BRONZE	
7.1	LP ENGINEERED WOOD LAP SIDING - EVENING BLUE	

EXTERIOR MATERIALS		
Material Mark	Description	Image
7.2	LP ENGINEERED WOOD SHAKE SIDING - TIMBER BARK	
7.3	LP ENGINEERED WOOD PANEL SIDING - COBBLESTONE	
7.4	ASPHALT SHINGLES - CERTAINTED LANDMARK - WEATHERED WOOD	
7.5	TRIM - ARCTIC WHITE	
8.0	VINYL WINDOW - WHITE	
8.1	STEEL PANEL GARAGE DOOR - DARK BRONZE	

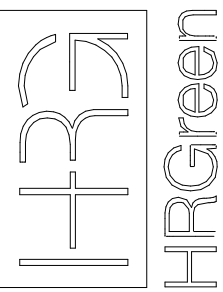
REVISION DESCRIPTION

BY

DATE

NO.

HR GREEN - DENVER  
5619 DTC PARKWAY  
SUITE 1150  
DENVER CO 80111  
PHONE: 720.602.4999  
FAX: 844.273.1057



Affinity at Castle Rock  
EXTERIOR ELEVATIONS

AFFINITY AT CASTLE ROCK  
INLAND GROUP  
CASTLE ROCK, COLORADO

As indicated

DRAWN BY:  
APPROVED:  
JOB DATE: 11/22/2022  
JOB NO: 22052

SHEET  
A5.3

29  
OF 35

CAD DATE: P:\22052-Inland-Affinity at Castle Rock CO02-Model\22052-Inland-Affinity at Castle Rock.RVT  
CAD FILE: