

**RESOLUTION CONCERNING THE SOUTH & WILCOX ROUNDABOUT PROJECT;
CONCURRENCE OF LOWEST RESPONSIBLE BIDDER, AUTHORIZING
EXPENDITURE AND PAYMENT, AND APPROVING NIGHT WORK VARIANCE**

APRIL 6, 2021



VALUE

Reliability

Lowest Total Cost

Low downtime

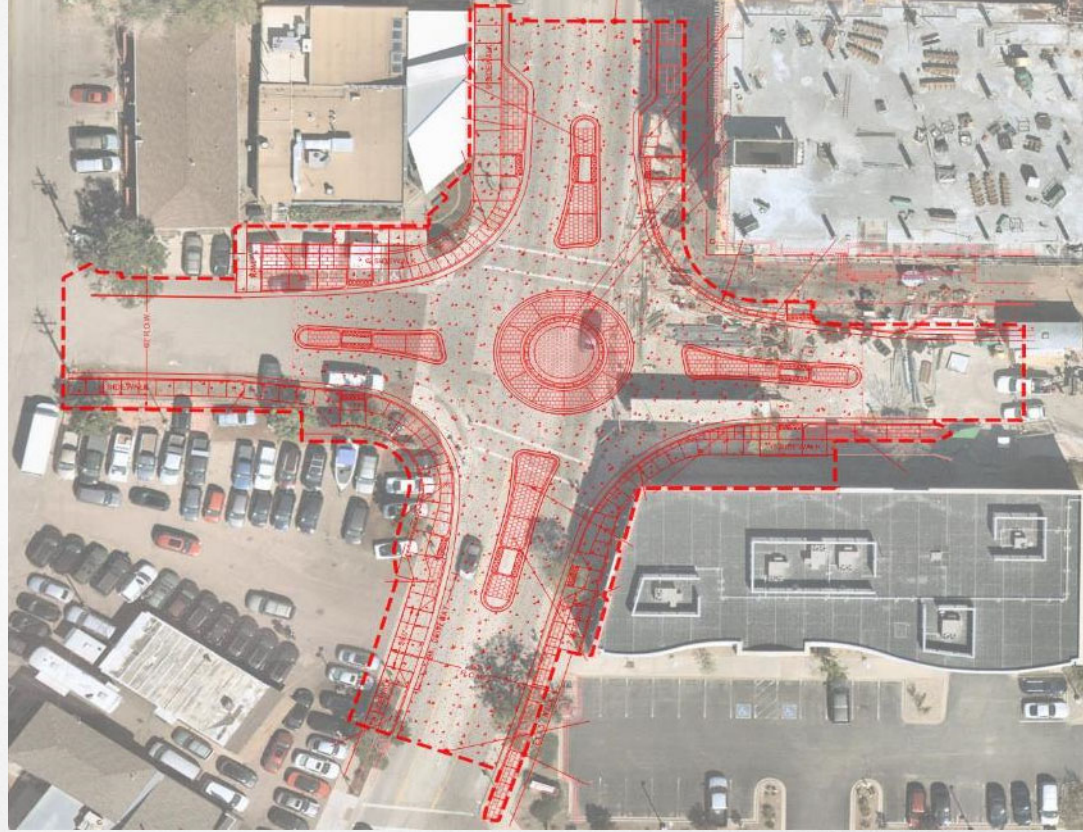
High Safety Value

*Low Environmental
Impacts*

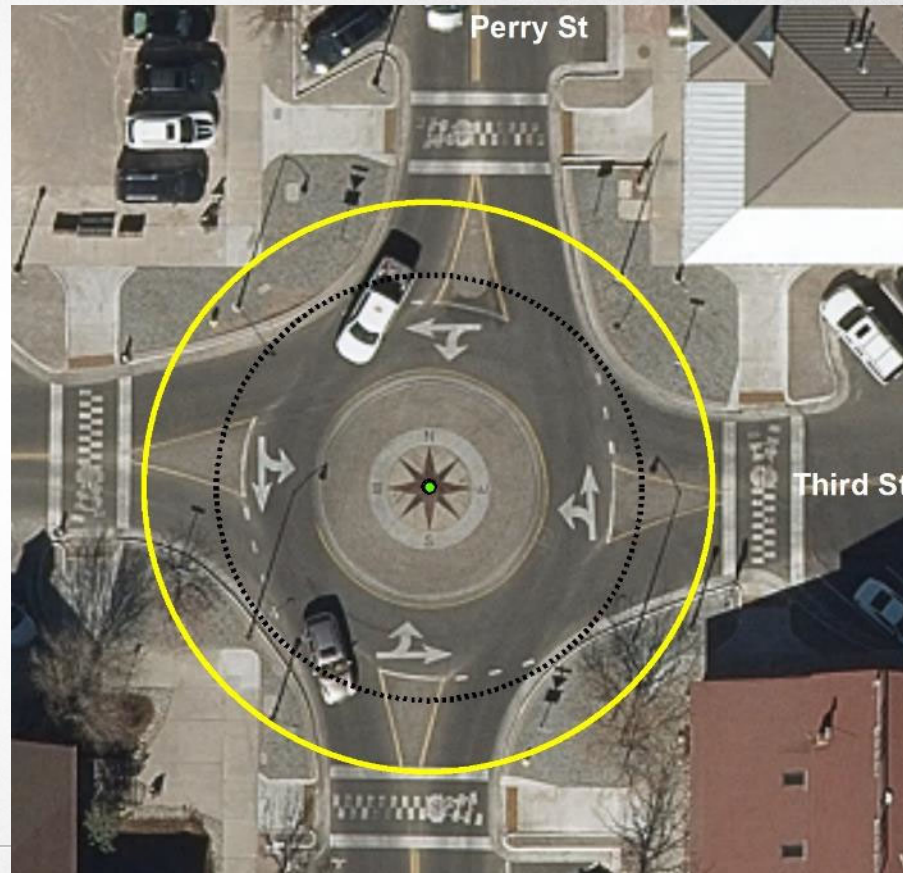


Staff Ops.

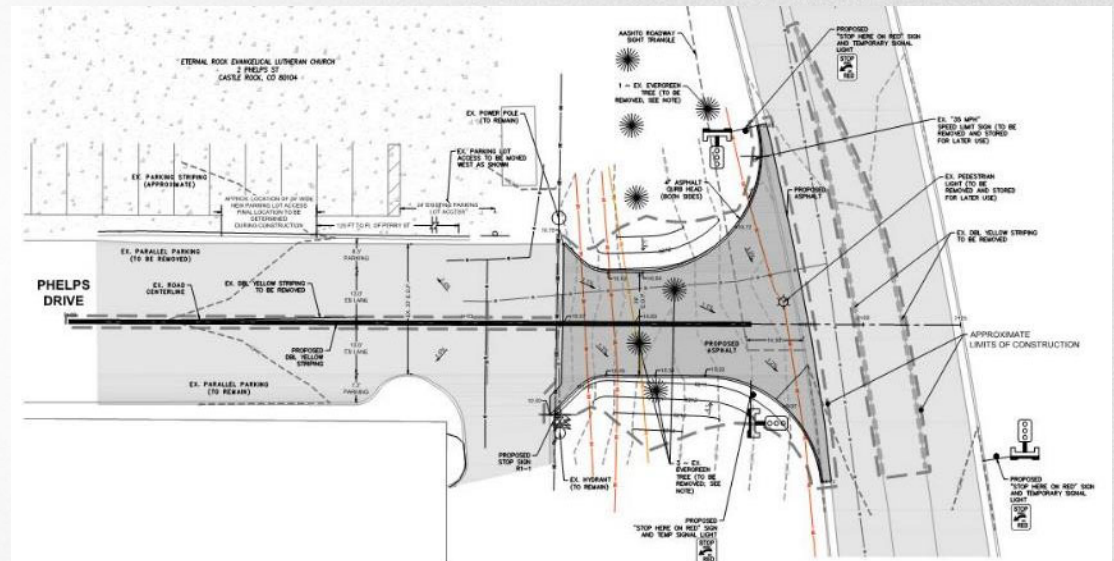
PROJECT OVERVIEW



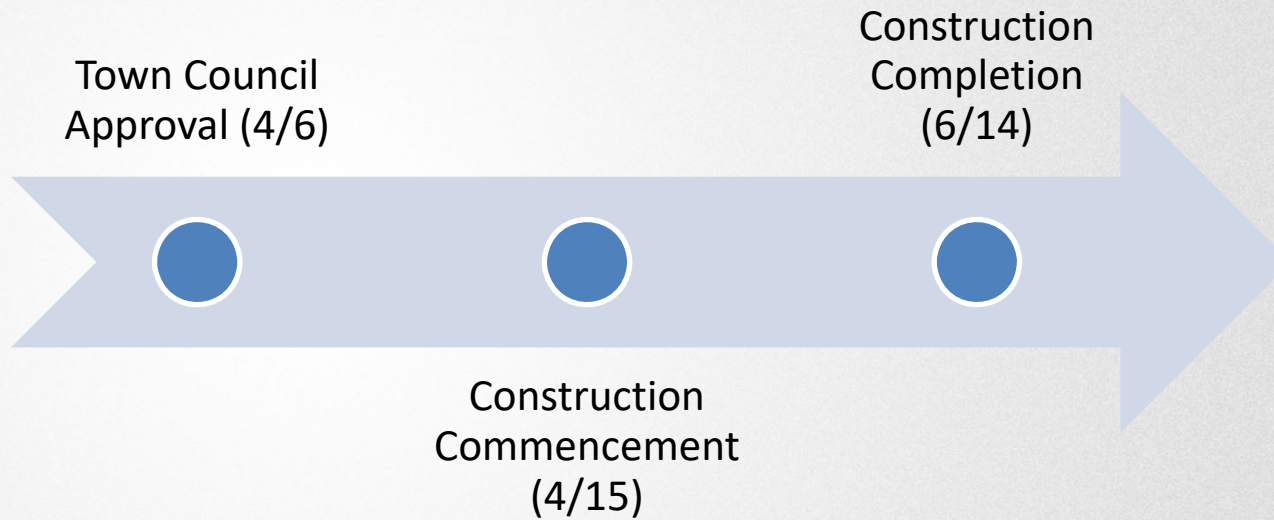
PROJECT OVERVIEW



PROJECT OVERVIEW CONT.



CONSTRUCTION TIMEFRAME



BUDGET IMPACT

BID RESULT AND SCHEDULE COST	
Budget (from 2019)	\$1,850,000
Engineer's Opinion of Probable Costs	\$1,857,815
Low Bidder Cost	\$1,896,435
Cost to Accelerate Schedule	\$167,422
Town Managed Contingency (10%)*	\$206,385*
	\$2,270,243

* "The Redevelopment and Financing Agreement (RDA) allows for 5% contingency, a 10% contingency is recommended

BUDGET IMPACT

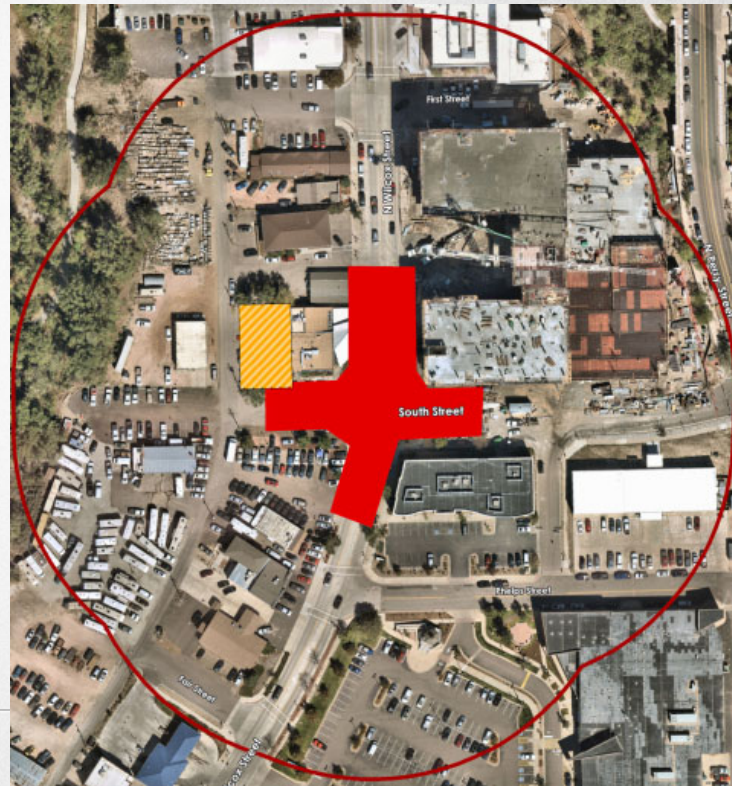
FUNDING ACCOUNT ASSIGNMENTS	
Fund Name	Amount
Transportation Capital Fund	\$1,520,243
DDA Special Fund	\$750,000
	\$2,270,243

VARIANCE FOR NIGHTTIME CONSTRUCTION ACTIVITIES

It is recommended that Council approve a noise ordinance variance for the project

- Allows extended Weekday working shifts
- Allows Weekend Work
- Allows Night Work

The variance will drastically reduce construction duration to minimize overall impact to the community



NOTIFICATION AND OUTREACH EFFORTS

The project team has collected feedback, and informed business and residents adjacent to the project. Some special efforts made:

- Project Phasing to maintain pedestrian and traffic access to downtown businesses
- Partnering with Encore developer to provide additional parking in the new downtown parking structure in time for impacted businesses, employees and clientele
- Signage around the perimeter of the intersection closure to provide messaging that businesses in and around the closure area are still open

RECOMMENDATION

PWC & staff recommends Town Council approve the resolution as introduced by title.

“I move to approve the Resolution as introduced by title.”



THANK YOU